

NEW ENGLANDER

Chess Club Update – August 2007

Chairman's Chatter

Welcome to the "NEW ENGLANDER" – a newssheet for the New England Chess Club. Our new venue gives us the opportunity and impetus to try some new ideas and keeping members informed of club activities is one way to improving involvement and enjoyment of the game. This is the first issue and I very much hope it is not the last because the idea is so simple.

The "NEW ENGLANDER" aims to record past and forthcoming events and to stimulate interest with entertaining articles for the chess-playing community. I should like to circulate an edition at the start and end of the season and at intervals of about 2 months in between. It will only succeed if all club members are willing to contribute – articles, games, experiences, match results ... A small, occasional effort from everyone is all that is needed. I trust I can count on your support.

Paul Hanks

Diary Dates

All events are at the New England Club starting at 7-30pm unless otherwise stated.

Inaugural AGM 5th September

to elect the new committee and decide the team entries for 2007/8. For club officers,

Executive Committee meeting 12th September

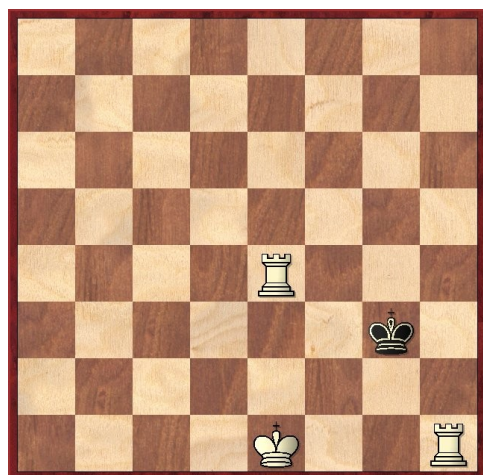
to determine the league structure. **The details have yet to be confirmed** but the venue will probably be at Warboys to encourage representation from Cambridge clubs.

Result Round-up

Nothing to report.

Puzzle Problem

White to play and mate in 2.



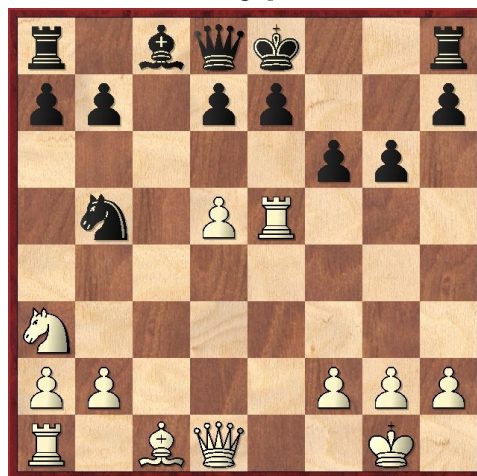
Match of the Month

On 13th August, I found myself in the Strand and popped in to the Staunton Memorial Tournament being held at Simpson's. I shall try to report on this event in a later issue of "NEW ENGLANDER" but it put me in mind of the only other time I was a spectator at a grandmaster competition when I was taking a cheap holiday at Albena in Bulgaria.

The weather was dull, the food was terrible and there were no street lights. Thankfully, the evenings were brightened by one hotel hosting a strong event featuring some strong players from Eastern Europe. I witnessed the following game :

A Lutikov v E Ermenkov

1 e4 c5 2 Nf3 Nc6 3 Bb5 g6 4 0-0 Bg7 5 c3 Nf6 6 d4 cxd4 7 cxd4 Nxe4 8 d5 Nd6 9 Na3 Ne5 [White's ninth move is not "in the book". Fritz prefers 9 ... Nxb5 10 Nxb5 with Black having a slight edge] 10 Nxe5 Bxe5 11 Re1 Nxb5 [I was surprised Black did not try to preserve his bishop e.g. 11 ... Bg7 12 Bg5 f6 13 Bf4] 12 Rxe5 f6 [Here, 12 ... d6 looks more natural 13 Re1 Nxa3 14 Bg5]



13	Nxb5	fxe5
14	d6	0-0

I was fascinated by how quickly the attack develops. If 14 ... exd6 15 Nxd6+ Kf8 (after 15 ... Ke7 although 16 Bg5+ is a simple win, 16 Qd5 leads to mate) 16 Bh6+ (16 Qf3+ also wins 16 ... Ke7 17 Qd5 h6 18 Qxe5+ Kf8 19 Qxh8+ Ke7 20 Qe5+ Kf8 21 Bxh6+) 16 ... Ke7 17 Qd5 etc

15	Bg5	Qb6
15 ...	Re8	16 Qd5+ e6
17	Qxe5	Qa5
18	Bh6	Bh6
16	dxe7	Qxb5
17	exf8Q+	Kxf8
18	Qd6+	Kg8
19	Bh6	1-0

19 ... Kf7 20 Bf8. A neat finish.