

# **NEW ENGLANDER**

## Chess Club Update – September 2007

### **Chairman's Chatter**

This issue of the "**NEW ENGLANDER**" will concentrate on the outcome of the inaugural Annual General Meeting held on 5<sup>th</sup> September with eight prospective members present.

The Committee was elected as follows :

Chairman	Paul Hanks
Secretary	Chris Russell
Treasurer	Harry Currie
Captain A	Francis Bowers
Captain B	Mahmoud Tarabad
Tournament Secretary	Paul Hanks

The subscription was set at £15 p.a. with a trial free membership for juniors. **Payment should be made to the treasurer by 30<sup>th</sup> Sept.**

Only two teams will be entered into the leagues based on the numbers of members that are expected to join.

With the reduced number of home matches, there will be more opportunities to arrange internal club events. It was suggested that the club championship be arranged with two preliminary rounds to qualify for an upper or lower division that would then be contested on an all-play-all basis. **Everyone wishing to compete should contact the Tournament Secretary.** Otherwise, the normal schedule of event will be held and a date set for a club meal.

With the above remit, the fixture list for the coming season has been arranged and is attached in this newsletter. There were actually 33 Wednesdays before the end of April and of these,

- 12 have home matches
- 6 are rounds of the club championship
- 8 evenings have club events
- 4 have away matches
- 2 coincide with the County championship
- 1 is lost to the Christmas festivities

As we host the first round of the County Individual, the whole club evening will be given over to this event and all club members are urged to compete.

**Please notify your entry to the club Secretary.**

This looks (and is!) a fairly full calendar but the objective is to have something arranged so that members will want to come to the club every week. There are, however, typically 10 weeks when one team has a match and there is nothing formally organised for the remainder. Some of these evenings are being highlighted as being in reserve for club championship matches that could not be competed on the designated nights (though I would discourage postponements wherever possible).

For these spare nights, we need a flexible tournament that can accommodate the match needs

and has a slightly different flavour to the other events. What I am proposing is a pairs competition with 30 minutes each per game and two games per evening i.e. first match A1 v B1, A2 v B2 and a second match B1 v A2, B2 v A1. The title would go to the pair accumulating the maximum number of points during the season so the more you play, the higher your chances of winning!

Would anyone be interested?

Paul Hanks

### **Diary Dates**

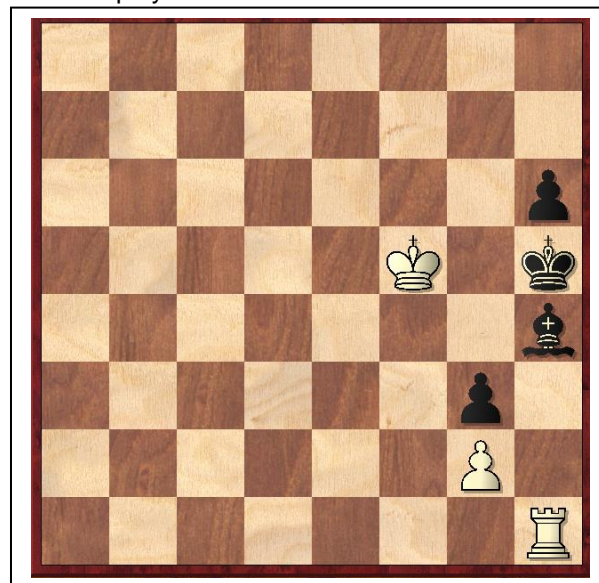
The schedule of club events is attached.

### **Result Round-up**

Nothing to report.

### **Puzzle Problem**

White to play and mate in 2.



## NEW ENGLAND CHESS CLUB FIXTURES 2007-8

Day	Date	All Club	A Team	B Team
Wed	19 Sept	Mini-lightning		
Wed	26 Sept	-	Home v St Neots (Fen KO)	
Wed	3 Oct	-	Away v Cambridge	
Wed	10 Oct	-		Away v Buckden B
Mon	15 Oct	-	Away v St Neots	-
Wed	17 Oct	Club champ prelim 1		
w/c	22 Oct	-	Fenland KO semi-final	-
Wed	24 Oct	Club champ prelim 2		
Wed	31 Oct	-	championship reserve at New England	Home v St Neots B
Wed	7 Nov	County Championship		
Thurs	8 Nov	-	Away Peterborough B	-
Wed	14 Nov	-	Home v Peterborough A	championship reserve
Wed	21 Nov	-	championship reserve	Home v Peterborough C
Wed	28 Nov	-	Home v Warboys A	championship reserve
Mon	3 Dec	-	Away v Buckden A	-
Wed	5 Dec	Handicap tournament County Championship at Cambridge		
Wed	12 Dec	-	Xmas special	Xmas special
Wed	19 Dec	-		Home v Spalding
Wed	26 Dec	Boxing Day. No meeting	No meeting	No meeting
Wed	2 Jan	Club champ Final 1		
Wed	9 Jan	-		Away v Warboys B
Wed	16 Jan	Club meal		
w/c	21 Jan	-	Fenland KO final	-
Wed	23 Jan	Club champ Final 2		
Thurs	24 Jan	County Championship	at Peterborough	-
Wed	30 Jan	-	Home v Buckden A	championship reserve
Wed	6 Feb	-	championship reserve	Home v Buckden B
Thurs	7 Feb	-	Away v Peterborough A	-
Wed	13 Feb	-	Home v St Neots A	
Wed	20 Feb	Club champ Final 3		
Thurs	21 Feb	-	-	Away v Peterborough C
Wed	27 Feb	County Champ Warboys	championship reserve	championship reserve
Wed	5 Mar	-	Home v Cambridge	
Wed	12 Mar	-	Home v Peterborough B	
Mon	17 Mar	-	-	Away v St Neots B
Wed	19 Mar	Challenge match		
Mon	31 Mar	County Championship	at St Neots	-
Wed	26 Mar	Club champion Final 4		
Wed	2 Apr	-		Home v Warboys B
Tues	8 Apr	-	-	Away v Spalding
Wed	9 Apr	Problem night		
Wed	16 Apr	-	Away v Warboys A	
Wed	23 Apr	Quickplay tournament		
Wed	30 Apr	Jamboree?		

## Match of the Month

Chris Ross recently competed in the IBCA European Individual Championships in Durham. He finished with a plucky 6/9 (was this a misprint for "lucky"?) and this gave him a very creditable joint 5th in a very strong field with ELO ratings up to 2418. Here is one of his games with Chris's own notes.

**R Suder (2209) v C Ross (2133)**

**1 Nf3 Nf6 2 g3 d5 3 Bg2 Bf5 4 O-O e6 5 b3 Be7  
6 Bb2 h6 7 c4 O-O 8 d3 Bh7**

An uninspiring opening by White. Black has set out solidly and awaits White's plan. Nothing much is happening and I decided to preserve the bishop, avoid any tactics with e2-e4 later and wait to see what I should do with my c pawn.

**9 Nbd2 c5**

Now White has committed the queen's knight to d2, it is OK to take some control of the centre as the d5 pawn is not as pressured as it would be if the knight were to be on c3.

**10 Ne5 Nbd7  
11 Nxd7 Qxd7**

What white has achieved by this exchange is the awkwardness of the black queen. She doesn't really belong on d7 and finding a good square for her is not an easy task. There again, White has a similar problem with his own queen so it balances out.

**12 cxd5 Nxd5**

Black has to be extremely careful not to allow the position to transpose into a bad version of the Catalan. The bishop on h7 is looking a bit out of things and will probably have to come back to the centre sooner than later, but 12 ... exd5 13 d4 is just good for White.

**13 Rc1 Rac8  
14 Nc4 Bf6  
15 d4!?**

White is aiming for that Catalan type position where the black queen-side pawns have been weakened and are under much pressure. Exchanges on d4 are not what Black wishes and the isolation of the d pawn after captures on d5 would leave him with a bad ending. A good strong plan is now required for Black.

**15 ... b5!**

Black takes aggressive measures to prevent himself from being lumbered with positional weaknesses. The text move forces opposite-coloured bishops in the middle-game, which often end decisively for the player with the initiative. Also, Black now wishes to mobilise his queenside pawns and attempt to force a passed pawn. A dull opening now springs to life.

**16 Ne5 Bxe5  
17 dxe5 Rfd8**

And now a 50 minute think by my opponent! The positional issues are very difficult. The white queen has little room to find a good square and the bishop

on b2 has now been blunted. The bishop on h7 has sprung to life and the black rooks loom in the centre. Black is preparing to push his passed pawn and create counter-play on the queenside. White's doubled pawn, although strong, is not doing very much unless White whips up a kingside attack. The knight on d5 stands so dominantly and whilst its there, White has no chance of getting active play. However, driving the knight away with e2-e4 would just weaken the d3 square (allowing Nb4/Nd3 ideas) and the bishop on g2 would then be shut in. The decision is not easy and White failed to find a good plan here. Indeed, I cannot now see one for White, whereas Black has a clear objective in mind.

**18 Bxd5**

How this must have hurt to play, giving up White's pride and joy. 18 Qd2 and Rfd1 and wait to see what Black does is probably his best option.

**18 ... exd5**

Naturally, Black does not want any endgame and certainly does not want the queen's off. Now the black pawns in the centre are going to cause White some problems. White has to start going hacking....

**19 e3 Qh3?**

Wasting time. This only helps White in his plans. Black should get on with his plan and play 19... b4 and start rolling the pawns.

**20 f3 Qe6**

Returning to the action, realising that the black queen has no chance of attacking and winning a lone fight.

**21 Qd2 b4  
22 Rfd1 Qb6**

Protecting the rook on d8 so that e3-e4 can be met with d5xe4 and also supporting the queen-side pawns. In addition, d5-d4 is now supported.

**23 Qf2 a5  
24 g4**

White starts his hack. 24 Qe2 Bf5 is fine for Black with the bishop coming back into the game.

**24 ... h5?!**

A dubious move and one that I am not going to recommend! I played this with a practical purpose. My opponent was in serious time trouble, after having spent 50 minutes over 18 Bxd5. The idea was that if white blockades with 25 g5, the pawn roller has come to a stop. White must retain his pawn on f3 if he wants any kind of attack but this is very very risky play by Black and gave White more complications to consider in his time pressure. Naturally, getting on with the plan with 24... a4 has to be preferred creating an eventual set of passed pawns on the queenside.

**25 gxh5 Qh6  
26 Kh1 Qxh5  
27 Rg1**

And suddenly, the g7 square has become a massive target. Black has played this too ambitiously and took too many risks.

**27 ... Bg6**

Trying to block up the g file. 27... c4 28 Bd4 Bg6 29 e6 fxe6 30 Rg4 and White's pressure continues.

**28 Rg3?**

White's final chance to create activity and give himself good prospects. The rook does not belong on g3, if anywhere, on g4 to have Rh4 as an option too. 28 e6 has to be played, even if it is a pawn sac, just to activate the bishop on b2. Now or earlier, this should have been thrown in and given Black pause for thought. 28 e6 c4 29 exf7+ Kxf7 is getting messy and is what White should be aiming for.

**28 ... Rc6**

Organising the defences. Now the 3rd rank is protected and e5-e6 ideas don't have as much bite.

**29 Rcg1**

29 e6 Rf8 30 exf7+ Rxf7 when f3 is becoming a target and White's attack has died.

**29 ... Qh4**

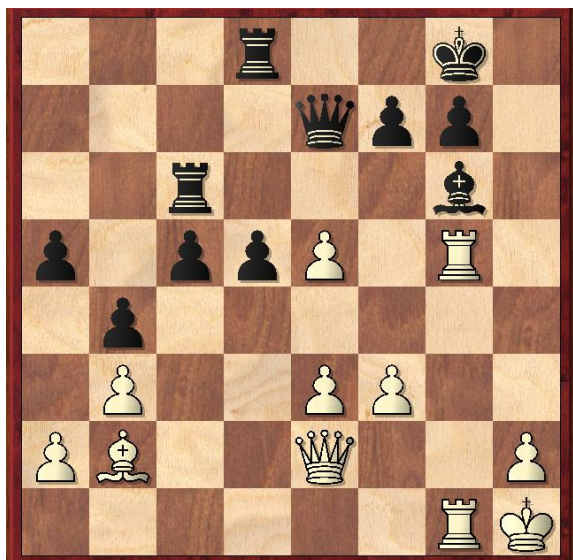
Illustrating why 28 Rg3 was a mistake as the rook is now pinned. 28 Rg4 would have prevented this and plan B would have to be played with 29 ... Qf5 30 Rg5 Qc8 31 Qh4 where it has become unclear again.

**30 Qe2**

Unpinning and having sneaky Qb5 ideas switching the queen to the queenside to gobble some material.

**30 ... Qe7**

**31 Rg5**



**31 ... d4!**

My opponent had very little time left and it was time to start the counter-attack. 31 ... c4 32 Bd4 achieved little so I had to mix it up first, but cool calculation was in order as the white attack looks promising.

**32 h4**

With little else in the position, White goes for it and banks everything on smashing through to g7. In

doing this though, he leaves his own king wide open and vulnerable for the counter-attack.

**32 ... d3**

**33 Qd2**

A natural looking move, blockading the pawn, but 33 Qd1 c4 34 bxc4 Rxc4 35 e4 was his best chance to survive although it still looks grim for White.

**33 ... c4**

**34 bxc4**

White cannot permit the pawns to crash through as pushing the h pawn wouldn't lead to much. At any stage, I can always chuck in Qxg5 to prevent any mating nets occurring. In any case, h8 is actually a good escape square for the black king as there is no immediate mates.

**34 ... Rxc4**

**35 Bd4**

Trying to block up the 4th rank as 35 h5?? Rh4+ and the rook on g5 falls with check. 35 Qh2 Qb7 36 Qg3 d2 causes White too many problems.

**35 ... Rc2**

**36 Qd1**

**Qe6**

Illustrating the vulnerability of the white king by the lobbing of the h pawn.

**37 R5g4 Qxa2**

Not only winning a pawn, but taking complete control of the 7th rank and creating two outside passed pawns on the queenside. The threat of mate with Rh2+ and Qf2 is just an incidental thing....

**38 R4g2 Rdc8**

Cool and collected! The overpowering nature of the black major pieces on the 7th rank as well as the tremendous passed d3 pawn seal White's fate.

**39 h5 Rxc2**

**40 Rxc2**

**Rc2 0-1**