

# **NEW ENGLANDER**

## Chess Club Update – December 2007

### **Chairman's Chatter**

The clocks have changed and the evenings are now decidedly darker and chillier. Just the time of year to spend your evenings locked in battle over a chessboard! Thankfully, that is what we appear to be doing as the Club Championship is in full swing and teams are competing in the leagues and Fenland Knock-Out. The results available are recorded here as well as an update on the progress of the club championship.

Paul Hanks

### **Diary Dates**

I had hoped that the preliminary rounds of the Club Championship would have been completed by now. Unfortunately, there have been unavoidable delays and it is not yet possible to construct the two divisions of the second phase. I shall try to issue a Christmas edition of the "NEW ENGLANDER" which will focus on the draw.

Four nights were set aside in 2008 especially for this competition but we have 7 rounds to fit in! Fortunately, there are a further 4-5 Wednesday evenings when one or other team is not engaged in a home match. I shall try to schedule games accordingly by splitting rounds over two nights so that members of each squad only has a Championship game when their team has no match.

Round 1            2<sup>nd</sup> January  
 Round 3            23<sup>rd</sup> January  
 Round 5            20<sup>th</sup> February  
 Round 7            26<sup>th</sup> March

The reserve nights on

	<u>A team</u>	<u>B team</u>
Round 2	9 <sup>th</sup> Jan	30 <sup>th</sup> Jan
Round 4	6 <sup>th</sup> Feb	13 <sup>th</sup> Feb
Round 6	27 <sup>th</sup> Feb	27 <sup>th</sup> Feb
Reserve	2 <sup>nd</sup> April	5 <sup>th</sup> Mar 12 <sup>th</sup> Mar

Preliminary round scores so far :

2            **F Bowers, C Ross**  
 1½        **C Collins, P Hanks**  
 1            M Tarabad, N Wedley, H Currie  
 ½          C Russell  
 0            M Ingram, A Brookbanks

### **Result Round-up**

Fenland Knock-Out Round 2			
<b>Peterborough A</b>	<b>4</b>	<b>New England A</b>	<b>2</b>
A Timoshenko	1	C Ross	0
S Knight	0	F Bowers	1
R Ilett	1	J Osbourn	0
A Summers	½	M Ashkettle	½
M Connolly	½	M Ingram	½
G Ward	1	M Tarabad	0

<b>Peterborough B</b>	<b>2</b>	<b>New England A</b>	<b>3</b>
A Timosenko	½	C Ross	½
N Chedd	½	F Bowers	½
G Ward	0	P Turp	1
D Brown	0	J Osbourn	1
R Lloyd	1	M Ashkettle	0

<b>New England A</b>	<b>2</b>	<b>Peterborough A</b>	<b>3</b>
C Ross	½	S Knight	½
F Bowers	0	P Walker	1
P Turp	1	R Ilett	0
R Jones	0	N Holroyd	1
J Osbourn	½	M Connolly	½

<b>New England A</b>	<b>1</b>	<b>Warboys A</b>	<b>4</b>
C Ross	½		½
F Bowers	½		½
P Hanks	0		1
J Osbourn	0		1
M Ashkettle	0		1

<b>New England B</b>	<b>1</b>	<b>St Neots B</b>	<b>3</b>
P Hanks	1	M Barker	0
C Collins	0	S Foster	1
M Tarabad	0	N Holmes	1
S Walker	0	W Stimpson	1

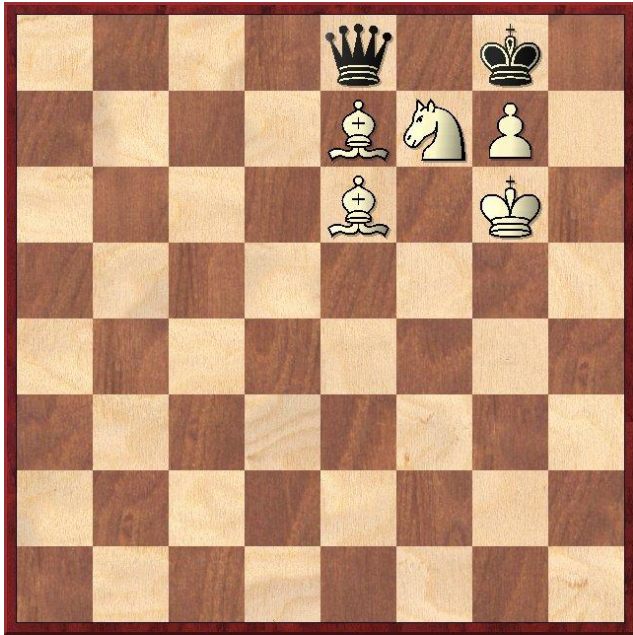
<b>New England B</b>	<b>3</b>	<b>Peterborough C</b>	<b>1</b>
A Brookbanks	0	R Lloyd	1
M Ingram	1	B PleasanceBrown	0
H Currie	1	P Silman	0
S Walker	1	Default	0

Club Championship Preliminary Round 1			
R Jones	P	S Walker	P

Club Championship Preliminary Round 2			
A Brookbanks	0	F Bowers	1
C Collins	½	P Hanks	½
C Ross	1	H Currie	0
M Ingram	0	N Wedley	1
M Tarabad	1	C Russell	0
J Osbourn	P	S Walker	P
R Jones		Bye	

## Puzzle Problem

White to play and mate in 2.



## Match of the Month

Most of you will have noticed that the club is missing one of its most colourful characters. Des Lane has been ill since the final match of last season and has had to undergo a stringent treatment regime in the months since. When I visited him, I was pleased to find him looking better than I expected and in good spirits. I asked him to go through his most memorable games (with some of my observations in italics). Please visualise yourself in a comfy armchair in his spacious lounge, sipping a warm beverage and playing through this month's games...

### D Lane v R Ilett

**1 c4 e6 2 d4 Nf6 3 a3 b6 4 Nc3 Bb7 5 Bf4**

I was playing Ray in the 2007 County Championship. He has a much higher grade than me so my game plan was simple - all out attack and hope to get a chance in the resulting complications!

**5 ... Be7**  
**6 Nb5**

See what I mean?

**6 ... d6**  
**7 Nf3 0-0**  
**8 c5 Nd5**  
**9 cxd6 cxd6**  
**10 Bg3**

I was happy with the way the opening had gone. I had avoided the Nimzo Indian set-up with a pin on Nc3 and managed a little skirmish over d6. Black has shifted his defensive knight from f6 and it has become a target for e2-e4.

**10 ... a6**  
**11 Nc3 Nxc3**  
**12 bxc3 Nc6**  
**13 e3 Na5**

**14 h4 Rc8**  
**15 Rc1 d5**

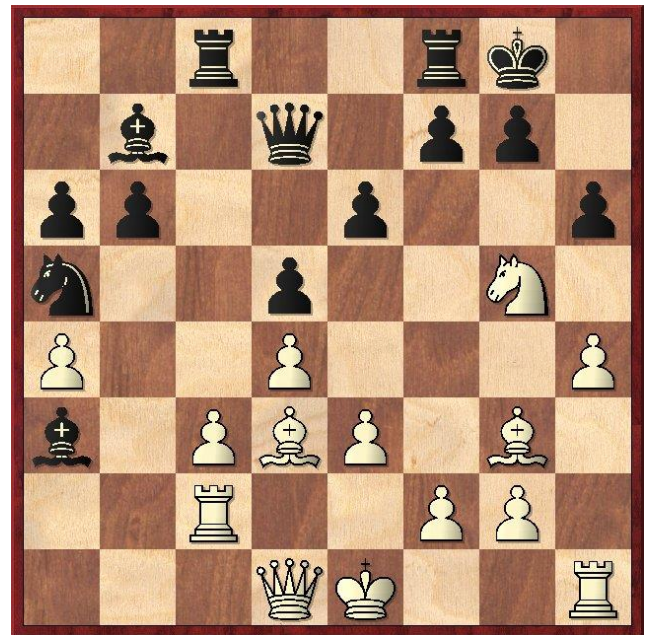
The exchange of the knights had surprised me on move 11 and now, Black not only relinquishes control of e5 but fixes the centre. His counterplay will be entirely on the distant queenside where I was quite willing to give up pawns while attacking on the opposite flank.

**16 a4 Ba3**  
**17 Rc2 Qd7**  
**18 Bd3**

All my pieces are aiming at the kingside. Black was not too worried at this stage and his next move halts further progress by preventing Ng5 by White.

**18 ... h6**  
**19 Ng5**

Oh no it doesn't!



*At first, this sacrifice looks very speculative but it can be shown to hold water by 19 ... hxg5 20 Bh7+ Kh8 (20 ... Kxh7 21 Qh5+ Kg8 22 hxg5 f5 23 g6) 21 Qh5 Rfe6 22 hxg5 g6 23 Bxg6+ Kg7 24 Qh6+*

**19 ... g6**

*Black may have more chances by ignoring the offer and waiting to see how White intends to breach the pawn barrier in front of his king e.g. 19 ... Qxa4 20 Qh5 Nc4. Initially, 21 Bh7+ is tempting with 21 ... Kh8 22 Nxf7+ Rxf7 23 Qxf7 Kxh7 24 Qxb7 to follow but do not forget 24 ... Qxc2. 21 Nxe6 is another try that seems to run out of steam after 21 ... fxe6 22 Qg6 Rf6 23 Qh7+ Kf8 24 Bg6 Rxc6 (otherwise 25 Qh8+ Ke7 26 Qxg7+) when the attack is very much diminished. Alternatively, White can try 20 Qg4 Nc4 21 Nxe6 fxe6 22 Qxe6+ Kh8 23 Qg6 Kg8 24 Qxe6+ with a draw by repetition though 22 ... Rf7 23 Bg6 Rcf8 looks tricky.*

**20 h5 hxg5**

*Initially, Fritz thinks that Black can defend by 20 ... Qe7. After some thought, it starts to favour White's position because of 21 Nh7 Kxh7 22 hxg6+ fxg6 (22*

... Kg7 23 Bf4 Rh8 24 gxf7 Kxf7 25 Qh5+ Kf8 26 Bxh6+; 22 ... Kg8 23 Rxh6) 23 Bxg6+ Kg8 (23 ... Kxg6 24 Qh5+ Kg7 (24 ... Kf6 25 Be5#) 25 Qxh6+ Kf7 26 Qh5+ Kg8 27 Be5) 24 Qg4

21 hxg6 fxc6  
22 Be5 Qxa4

If 22 ... Nc4 23 Rh8+ Kf7 24 Rh7+

23 Bxg6 1-0

I didn't even need my queen!

No discussion of Des's style would be complete without mention of his preference for Bird's Opening. It certainly leads to some unusual positions as the following game shows.

**D Lane v J Smith**

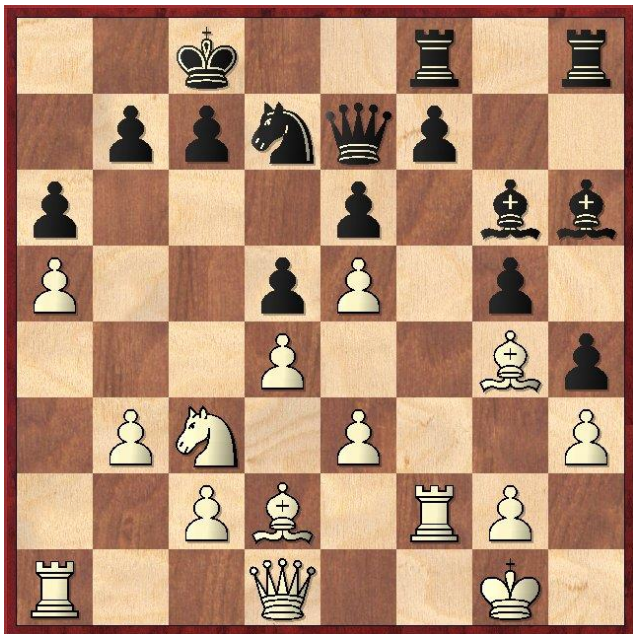
1 f4 Nf6 2 e3 d5 3 h3 h5 4 d3 Bf5 5 Be2 Qd7 6 Nf3 h4 7 Ne5 Qd6 8 Nc3 Nbd7 9 d4 e6 10 0-0 Qe7 11 a3 Nxe5 12 fxe5 Nd7 13 Nb5

13 Nxd5 was possible for White and wins a pawn at this point. This prospect was to dominate my thinking later in the game.

13 ... Nb6 14 b3 a6 15 Nc3 0-0-0 16 Bd2 g5 17 Rf2 Bh6 18 Bg4 Bg6 19 a4 Rdf8

Now I wanted to shift the Nb6 from its position protecting d5 so that I could exploit the pin on the e pawn.

20 a5 Nd7



21 Nxd5

Whoops! The pin has disappeared and I have to justify the "sacrifice" with some vigorous play.

21 ... exd5  
22 Ra4 Kb8

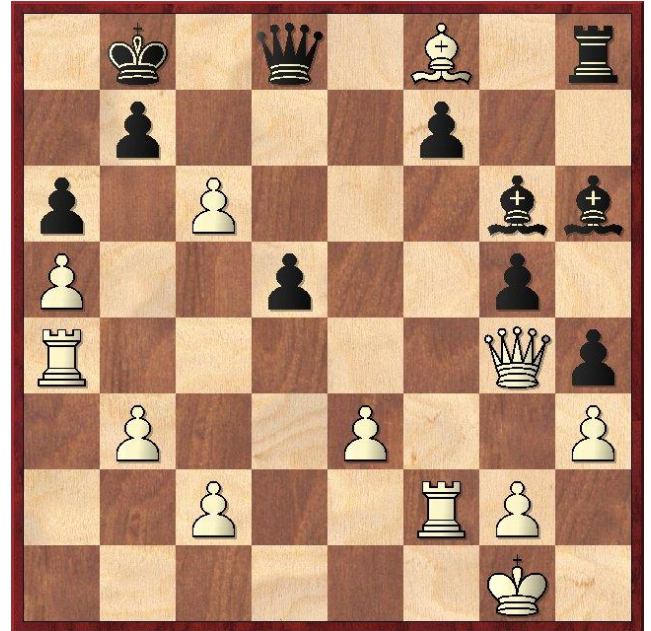
This is a bit passive when opening the position with such moves as 22 ... f5 may have led to further exchanges to Black's advantage.

23 Bb4 c5  
24 dxc5 Nxe5  
25 c6

The queen has a remarkably restricted range of movement

25 ... Qd8  
26 Bxf8 Nxc4  
27 Qxc4

Fritz says this is where Black lets the game slip. Can you find the best move?



27 ... Rxf8

The key square is b4 because White needs to occupy the file with Ra4-b4. 27 ... Bxf8 would prevent this.

28 Rb4 Qxa5  
29 Rxb7+ Ka8  
30 Qd4 1-0

We all wish Des a speedy recovery.