

NEW ENGLANDER

Chess Club Update – December 2010

Chairman's Chatter

I have read various magazine articles about the facilities enjoyed by chess clubs in Moscow and Amsterdam. Their lavish establishments run to libraries and regency restaurants and I can only look on with envy. Our requirements are obviously more modest and while not ideally situated, our new venue in Yaxley will hopefully meet our needs. I must thank Harry Currie for his efforts in arranging the move and Francis Bowers for helping to transfer the equipment.

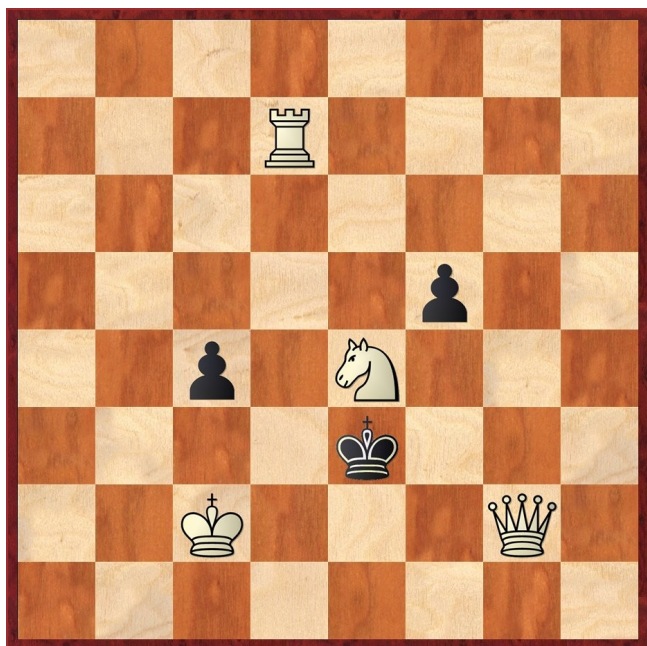
Paul Hanks

Diary Dates

After a long run of league matches and club championship games, we have the Christmas Special on 22nd December prior to taking a break for the seasonal festivities on 29th.

Puzzle Problem

White to play and mate in 2.



Last Month's solution

Position : 6B1/8/3N4/2n2pQ1/8/5k2/8/5K2

1 Nc4 f4 2 Qg2# [1 ... Ke4 2 Qe3#; 1 ... Ne4 2 Ne5#; 1 ... Ne6 2 Nd2#; 1 ... N other 2 Nd2# or Bd5#]

Website to Watch

The 2nd London Chess Classic takes place at Olympia Conference Centre, Kensington, London from 8th to 15th December. This is our best chance to see Anand, Carlsen and Kramnik in the flesh along with the best British grandmasters. Details of the main event, open competitions and sideshows (including a

simultaneous display by Korchnoi) and live games can be found on www.londonchessclassic.com.

Another tournament with a great tradition is Reggio Emilia which runs from 28th December to 6th January and can be followed on www.ippogrifoscacchi.it.

Result Round-up

Cambridgeshire "550" Competition

New England 2	1½	Godmanchester	2½
S Caraway	1	M Vigor	0
R Jones	0	A Rankin	1
M Tarabad	0	J Wright	1
S Sitaram	½	J Bygrave	½

Cambridgeshire County Chess Leagues

New England A	4	Warboys A	1
C Ross	1	B Duff	0
F Bowers	½	R Mann	½
S Caraway	½	J Beck	½
P Hanks	1	P Clough	0
P Turp	1	D Wardle	0

New England A	1½	Royston	3½
C Ross	½	P Kemp	½
F Bowers	½	K Clark	½
S Caraway	0	N Hutchinson	1
P Hanks	0	M Pinner	1
P Turp	½	B Judkins	½

Warboys B	1½	New England B	2½
J Beck	½	R Jones	½
P Clough	1	D Lane	0
M Onyons	0	A Brookbanks	1
D Wardle	0	M Tarabad	1

Fenland Knock-Out Cup

New England B	2	Cambridge	2
P Turp	0	O Winfridsson	1
R Jones	0	P Fallon	1
D Lane	1	G Mereuta	0
M Tarabad	1	Default	0

Club Championship : at 01/12/10

Division One	CR	SC	FB	PT	PH	Total
C Ross	X	1	1		1	3 / 3
S Caraway	0	X	½			½ / 2
F Bowers	0		½	X	1	2 / 4
P Turp				½	X	½ / 1
P Hanks	0		0		X	0 / 2

Division Two	RJ	CR	AB	DL	NW	SW	JA	Total
R Jones	X		1		1			2 / 2
C Russell		X						0 / 0
A Brookbanks	0		X				P	0 / 1
D Lane				X		1		1 / 1
N Wedley	0				X	0		0 / 2
S Walker				0	1	X		1 / 2
J Alster			P				X	0 / 0

Division Three	MT	DS	KT	HC	SS	PS	Total
M Tarabad	X		P		0		0 / 1
D Sivell		X				0	0 / 1
K Talnikar		P	X				0 / 0
H Currie				X	0		0 / 1
S Sitaram		1		1	X		2 / 2
P Spencer			1			X	1 / 1

Eye Opener

Suitable material involving top grandmasters is hard to find but here, White reaped the reward for some aggressive play.

A Shirov (2706) v A Motylev (2641)

FIDE World Cup Knock-Out, Moscow 2001

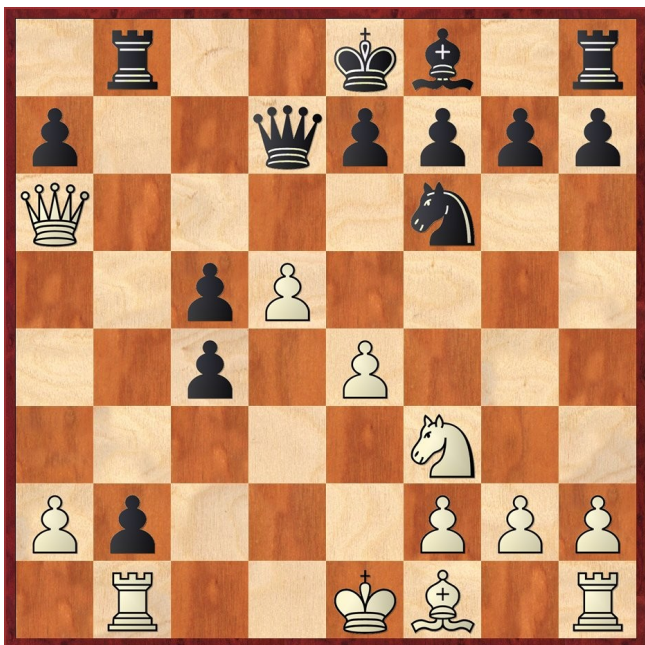
1 d4 d5 2 c4 dxc4 3 e4

The Queen's Gambit is based on the premise that White can build an impressive centre by deflecting Black's d pawn. 3 ... e5 is a common reply and most games with 3 ... Nf6 are drawn!

3 ... c5 4 d5 Nf6 5 Nc3 b5 6 Bf4 Ba6 7 Nf3

Another sharp continuation is 7 e5 b4.

7 ... b4 8 Bxb8 bxc3 9 Qa4+ Qd7 10 Qxa6 cxb2 11 Rb1 Rxb8



12 Ne5 Qb7??

Ouch! Black falls for a standard trap when the simple 12 ... Qc7 is perfectly adequate. What about 12 ... Qc8?

13 Rxb2 1-0

Match of the Month

FIDE Master Tyson Mordue suggested an interesting sideline in the Philidor Defence which, in several recent attempts, I have been finding a bit annoying and only achieving varied success. At the end of this game, you will find some opening references and some exemplar games from Tyson himself.

This lovely game is one of the few times that it has worked successfully for me and in doing so, I cleaned out a very strong player, graded ECF 206. There are some very neat positional touches in the early middlegame and the game concludes with a picturesque sacrifice and a kingside mating attack!

C Ross (2223) v A Timoshenko (2271)

New England A v Peterborough A , 14.10.10

1 e4 d6 2 d4 e5 3 Nf3 Nd7 4 Nc3 c6 5 a4 a5

Already an interesting positional question has arisen. White has played a2-a4 to restrain Black's queenside and to take some control of the light squares. Black is worried about White playing a4-a5 and gaining an even firmer clamp on that flank. To prevent this, Black attempts to claim the b4 square as an outpost. Intriguingly enough, playing a7-a5 leaves another central square that bit more vulnerable. I have contemplated this in depth previously and am starting to grasp the idea which I have utilised in other similar openings, such as the King's Indian and Benoni Defences.

By the a7-a5 thrust, Black is less able to contest the c4 square and my own a2-a4 move will provide cover for an outpost there. But which piece belongs on c4? Lots of debates now. Should the bishop on f1 go there (see the opening references below)? In that event, is the bishop prone to tactics with Nxe4 and a future d6-d5 by Black? Probably. Playing it back to b3 or a2 to stop those tactics makes the a2-a4 thrust pointless, as then Black may well achieve the break b7-b5. Yes, there are lines when that happens and the a file can become a bit of a problem.

So, which other piece can dominate from c4? Experience in Benoni set-ups helps - I intend the king's knight to land there. Then where do the white bishop pair belong? Answers coming up.

6 Be2

So, the light-squared bishop is kept in a more passive role intending to bring it via f3 or even f1 before an eventual fianchetto. For the time being, it must remain on the f1-a6 diagonal to restrain b7-b5. This apparent inactivity is acceptable since with the bishop on c4, Black would have exd4 and Nc5 ideas attacking e4 and life is becoming a bit awkward for the light-squared controller.

6 ... Ngf6

Logical enough, but there are options. See below for references.

7 0-0 Be7
8 b3

The next stage in the plan concerns White finding a suitable square for the queen's bishop. Developing it on e3 or g5 is possible but it tends not to have much influence there.

Instead, where is the structural weakness in the black camp for White to focus his attack? d6 seems to be a juicy pawn to target. Since it is effectively backward, it will require considerable support and the pawn can be virtually pinned to the bishop on e7 in many ways.

8 ... 0-0
9 Ba3

An unusual development but thoroughly consistent with 5 a4 and the plan to target the d6 pawn.

9 ... Re8

The bishop on e7 needs protection. Black has to be aware of the capture dxe5 at an appropriate time when the d6 pawn would be pinned if Black were to play a premature Qc7. Black naturally intends to recapture on e5 with the pawn when he would be controlling the centre very well indeed.

10 Re1 Qc7
11 Qd2 Nf8
12 Rad1 Ng6

OK, the critical moment. White has now developed his pieces to just about their ideal squares. The bishop on e2 needs relocating and the knight on f3 needs to find a secure outpost, but we have plans for that, right?

Black has attacking intentions on the kingside. His queen's knight has shifted around to menace the kingside with ideas of Nf4 and a lightning attack. Are we scared though?

How does White achieve his positional objectives; namely attacking the d6 pawn and restraining Black from countering with b7-b5?

13 d5!

Both positionally sound and psychologically damaging. White cannot continue 13 dxe5 when after d6xe5, Black would have ideas of Bg4 followed by Bxf3 and then Nf8-e6-d4. The outpost on d4 would become a nightmare for White as the knight on c3 is in fact poorly positioned.

White has to avoid a bad bishop v good knight ending at all costs. So, White opts not to offer the chance to Black. The e6 square is controlled and White simply threatens to take on c6 and make the d6 pawn a huge target. If Black attempts a subsequent break with d6-d5, White could be left with a potential outside passed pawn on the queenside.

Taking on d5 allows the exchange of the poorly-placed knight on c3. It gives White the chance to play c2-c4 and have a huge clamp on the queenside, with the b pawn and d6 pawns backward and very vulnerable.

So, Black wants to attack but can't if White is going to be annoying and blockade. Can Black afford the time to allow White to take on c6 and leave that poor d6 pawn as a huge target?

13 ... c5?!

Black decides not but at a huge cost. The bishop on a3 has certainly been shut out, but that's fine, since the bishop on e7 currently has few prospects.

But we come back to the very first few moves. That all-important a2-a4 and a7-a5 counter-thrust. Remember what I said about the c4 square becoming an outpost. Well, check it out now and all of a sudden, b5 has become an attractive square for the white knights. White has suddenly been presented with two very tasty outposts on the queenside. Can White afford the time to occupy them and if he does, do they actually do anything? Maybe not, if he's going to be mated on the kingside!

13 ... Rd8 14 h3 certainly keeps the tension but Black has more than enough to be worried about.

OK, strategic thinking is required. Black has made the decision to blockade. Squares and positions are the name of the game now. Tactics have to be taken into consideration, of course, but if we could simply reshuffle our pieces and put them on their optimal squares, where would they all stand? And how do you actually get them there?



14 g3!

Let's take this piece by piece.

Queen : The white queen in these set-ups always has a difficult job finding a suitable home. It's rarely comfortable on any given square but with the outposts that have been created on the queenside, she has holes to exploit. But Black has kingside attacking intentions so the white queen is probably needed for defensive duties.

The queen then must be able to switch to the kingside very rapidly. The quickest way is along the 3rd rank

and furthermore, the queen is currently standing on a square needed for another piece.

14 Qd3 would have allowed Nf4 but the queen can now head for d3 without that worry and later, for the light squares on the kingside, namely the g2 square! White intends to break through the centre, open the g file and build an attack against the black king with mating threats on g7.

Knight on f3 : This knight has been targeting the c4 square since move 5. In that regard, it has to be able to drop back to d2 en route and as mentioned, the white queen has to vacate that square.

Dark-squared bishop : On a3, this piece has been shut out and has to get a life. The only diagonal where it can actually do anything is c1-h6 and again, the queen has to move.

Light-squared bishop : The bishop is destined for f1 and probably g2 and/or h3, depending on where its black counterpart places itself. With the bishop on f1, the white queen will have to hold up any probing against f3 and the white kingside.

White e4 pawn : This would be left weak if the knight on c3 wanders away to b5 and Nxe4 tactics for Black become feasible. So, Qd3 has to be played to protect the pawn.

c4 square : Black cannot be permitted to play c5-c4 and gain time to break-open the position.

Pawn-breaks : White wishes to play f2-f4 and blast through the centre. If Black takes this pawn, White would recapture on f4 with the g3 pawn opening the g file for the attack and facilitating a future e4-e5 thrust, smashing a way through the centre, (similar to Benoni Defence set-ups). Not taking on f4 will allow a f4-f5 and kingside pawn storm.

With all of these considerations and prospects of Black's counterplay on the white kingside, the text move allows everything to be manoeuvred slowly into place. It takes a few moves and if Black's ambitions can be thwarted, it will be White who can start to think aggressively.

OK, once explained and all figured out, on with the plan!

14 ... h6

The next few moves by Black are rather strange. Obviously, he is cramped and searching for a decent plan, he soon becomes aggressive again. I surmise that Black intended Nh7 and Bg5 to gain some control of the dark squares and rid himself of a bad bishop. Why then he changes his mind, I am unsure.

15 Qd3 b6
16 Nd2 h5?

Black suddenly becomes impatient. He can clearly see my intentions and obviously feels that positionally, he is already in a very difficult position - 16 ... Ba6 17 Qf3 achieves nothing

I believe he should be breaking out with a f7-f5 thrust. Having played h7-h6, this leaves him even weaker,

but to get anything out of the game, he should be playing it like a King's Indian Defence.

Are we scared of the advancing h pawn?

17 Bc1

Certainly not! We simply get on with the re-positioning of the pieces.

In fact, opening the h file could be to Black's detriment since it is easier for White to exploit it. Unless there are nasty tricks on h3, h5-h4 and hxg3 do not help Black in the slightest.

It was so tempting to play 17 h4 but Black might have annoying tactics with sacrifices on h4 winning two pawns for an awkward attack. That would give him counterplay which I simply don't want. Ignore him then; get on with the plan.

17 ... h4
18 Nc4 Ba6

And we ask ourselves what the light-squared bishop is doing on a6 instead of the kingside, where White's light-squares are a lot weaker?

Surely, Black does not intend to present White with the bishop pair and allow them to participate in a slow, but powerful, kingside attack? He may be able to chop off one of the knight outposts on c4 or (in due course) b5 but not both!

18 ... Qd8 19 gxh4 Ng4 20 Bg5 didn't seem attractive for Black either.

19 Qf3

I thought this the simplest, although instinct was crying out for 19 gxh4 Nxh4 20 Qg3 Nh7 but I was reluctant to grab on h4 and leave the f4 square unprotected. In any case, I wanted to get on with my plan.

19 ... Nh7

Black is attempting to regroup his pieces for the defence. Very admirable and the black knight is heading for g5 maybe and possible annoying tactics. But there is more to the light-squares than first appearances.

20 Ne3!

After which, Black is in deep trouble. His position was worse, but now it is becoming very critical.

With Black's bishop wandering to a6, he has forgotten that f5 has been left weak. The knight on c4 can still keep an eye on that square and threaten to spring to the kingside with deadly effect.

All of the light-squares are now under tremendous pressure. Black needs to find a good saving plan and some way to find counterplay.

20 ... Bxe2?

Black's losing positional move. His game is positionally tenable if he retreats to c8 and prays. Tactics may help him to survive but this exchange of his best bishop is simply suicidal. 20 ... Ng5 21 Qg4 Bc8 22 Nf5 doesn't help him in the slightest.

21 Qxe2 Bf8

Black is digging in. 21 ... Bg5 22 Nf5 Bxc1 23 Nb5 looked grim for him.

22 Nb5 Qb8

I cannot explain why he chose b8 and not d8. I guess that he wanted the d8 square for his rook, with the queen coming to c8 as in the game. Nevertheless, the retreat to d8 has to be preferred although 22 ... Qd8 23 Qg4 increases the pressure even more.

23 Nf5 Rd8

As is his plan. However, it was not too late for 23 ... Qd8 24 Qg4 which looks pretty powerful.

24 gxh4

Snatching the pawn! White has won a pawn, but more importantly, the g file is opened for the final attack. White has gained tremendous positional domination and is now ready to finish Black off tactically. All the outposts, ranks and files favour White. A successful kingside attack has to be in order - the g file is open and the h4 pawn acts as a battering ram.

24 ... Ne7

25 Ng3

Of course I am not interested in exchanges. I want to attack and mate. The knight is poorly placed on e7 and exchanges only help Black to defend. Now, keep pieces on and pressurise the black king.

25 ... Qc8

Black wishes to try and wriggle his queen into the white kingside to provoke complications. Also, if Black penetrates with Qh3, the pawn on h4 may drop off and Black might muster some defence on f4. No, I can't allow that to happen. How do I stop it and maintain the attack? Effective usage of your pieces comes in here...

26 Rd3

Directly discouraging Qh3 as the discovered attack with Nf5 will be awkward for the queen to meet!

Also, the rook joins the attack. Always use as many pieces in the attack as possible. I am obviously going to use the other rook on the g file, so this rook swings across to the kingside via the 3rd rank to help in the final battering.

26 ... c4 would have given Black some counterplay but it is prevented by 27 Rc3 which simply wins the pawn!

26 ... g6

27 c4

Here I was getting very short on time - 5 minutes to reach move 36. I wanted to prevent Black from having any distracting counterplay down the c file with c5-c4. After all, the c4 outpost is no longer important as the knight is needed on the kingside. The knight on b5 is punching above its weight there, hitting d6 and preventing the black major pieces from moving.

27 f4 was another tempting move, but with time being so short, I did not want to run into complicated tactics before the time control.

27 ... Bg7

28 Kh1

29 h5

Bf6

Bg5?

Black was positionally bust but now, he's tactically down! It took a few seconds to figure out the absolutely correct variations, but I saw the general principles fairly quickly.

Black is naturally striving to exchange his poor bishop and hope to cement his fragile kingside. He underestimates the g file though and the control of the vital squares around the f file and h files.

The tactical finish is rather neat. You may wish to spend some time on figuring out the combinations.

30 hxg6

fxg6

Recapturing on g6 with the knight allows Nf5 and the white queen will worm its way in via g4 or h5 and sacrifices on g6 can't be prevented. OK, combination time!

31 Bxg5

Nxg5

Wow! Has Black managed to save himself? Black has annoying Nh3 and Nf4 tactics. 32 Rg1 was my immediate choice but try as I could, the tactics simply did not work after 32 ... Nh3.

So, refinement, refinement. I had seen the possibilities and all that matters is the loose nature of the g file and the black major pieces...



32 Nf5

Bang! A beautifully aesthetic way to put Black to bed.

Tactics abound and more importantly, Black is prevented from playing Nh3 and thence to f4. The rook on d3 has come into its own.

That poor knight on e7 though. Nxe7+ tactics are too strong now winning the black queen. Note how the black major pieces on the queenside are left sidelined while the black king is relentlessly mowed down!

32 ...

Nxf5

Black had no choice. 32 ... gxf5 33 Rg1 or 33 Rg3 is soon curtains. The loose nature of the g file is a constant but very relevant feature of the position.

33 Rg1!

Cool finishing. I am especially proud of this under tremendous time-pressure, having less than 2 minutes to reach 36 moves.

33 exf5 Qxf5 34. Rg1 Rd7 does not break through, but still looks strong.

33 Qg4 was tempting, but I could not see a finish after 33 ... Nh7 34 Qxg6+ Ng7 and despite how many rooks I put on the g file, Black can defend with Rd7 and Qb7 and although there are Nxd6 tactics, nothing was concrete enough for me.

So, I go the simple and logical route, where both knights are en prise.

33 ... Nxe4

Desperate. Nothing more, nothing less. I expected 33 ... Nh6 34 Rxg5 Kh7 35 Rdg3 when g6 can't be defended except for Rg8, which allows a capture on d6.

Cute was the idea of 33 ... Nd4 34 Nxd4 exd4 35 Rxg5 Kh7 36 Rdg3 Rg8 37 Qh5+! mating but I doubted my opponent would fall into that.

34 Qxe4 Kf7
35 Rf3

Initiating the final tactics. The knight on f5 is pinned, which allows Nxd6. All of the white pieces are helping in the attack whilst Black's queen's rook is doing nothing at all. Black realised this and attempted to rectify that slight impairment...but only allows a beautiful finish!

35 ... Rb8
36 Qg4

And with Black utterly tied up, the g6 pawn cannot be defended due to Nxd6+ forks.

The game is now over. Note how that knight over on b5 has been sitting there quietly but so, so effective!

36 ... Ke7

Now my dear audience, find the finish!

That little old knight on b5... What has he actually done? He can now be used to give the coup de grace!

37 Na7! 1-0

A very neat, dominating performance, cutting down a strong player by the simplest of means.

Opening references:

A 5 ... Qc7 6 Bc4 h6 7 0-0 Be7 8 Re1 Nf8 9 b3 Be6 10 d5 Bd7 11 Ba3 c5 12 Nb5 Qb8 13 Bxc5 a6 14 Nxe5 axb5 15 Nxd7 Nxd7 16 Bxb5 Ngf6 17 e5 0-0 18 exf6 Bxf6 19 Bd4 Bxd4 20 Qxd4 - **L Carraminana Lopez** (1929) v **J Buil Rello** (1967); Spain 2006 [1-0]

B 6 Bc4 Be7 7 0-0 Ngf6 8 Re1 h6 9 Ba2 Qc7 10 Nh4 g6 11 f4 exf4 12 Bxf4 Nh5 13 Bg3 Nxd3 14 hxg3 Nf8 15 Qd3 Ne6 16 Rf1 Rf8 17 Kh1 Bd7 18 d5 Ng5 19 Rad1 0-0-0 20 dxc6 bxc6 - **D Pedersen** (2324) v **H Abbasifar** (2375); Golden Sands 2000/ [1-0 (49)]

C 6 ... Be7 7 0-0 h6 8 b3 Ngf6 9 Bb2 0-0 10 Re1 Qc7 11 Bf1 Rd8 12 Qd2 Nh7 13 Rad1 Ng5 14 Nxd3 Bxd3 15 Qd3 exd4 16 Qxd4 Ne5 17 Rb1 Bg4 18 Be2 Bf6 19 Qe3 Bxe2 20 Rxe2 d5 21 exd5 Ng4 22 Qh3 cxd5 23 Nb5 Qf4 24 Bc1 Qf5 25 f3 Ne3 26 Bxe3 Qxh3 27 gxh3 d4 28 Bf2 d3 29 cxd3 Rxd3 30 Kg2 Ra6 31 Re3 Rd2 32 Kf1 Bg5 33 Rc3 Rg6 34 Nd4 Bf6 35 Rc2 Kh7 36 Ne2 - **V Galakhov** (2405) v **S Daryev** (2087); Odessa 2005 [1-0 (63)]

D 1 e4 e5 2 Nf3 d6 3 d4 Nf6 4 Nc3 Nbd7 5 Be2 Be7 6 0-0 c6 n 7 a4 0-0 8 Re1 Qc7 9 b3 Re8 10 Ba3 Bf8 11 Bf1 b6 12 Qd2 Bb7 13 a5 Rad8 14 d5 Nb8 15 Bb4 Rc8 16 axb6 axb6 17 Ra7 Red8 18 Bc4 c5 19 Nb5 Qe7 20 Bc3 Rd7 21 Raa1 g6 22 Na3 Ng4 23 Bb5 Rdd8 24 Nc4 Qc7 25 Qg5 h5 26 h3 Be7 27 Qd2 Nf6 28 Nfxe5 dxe5 29 Bxe5 Rd6 30 Nxd6 Bxd6 31 Bxf6 Bf4 32 d6 Bxd6 33 Qh6 Bf8 34 Qh8# - **T Mordue v A Clarke**; Bristol League 2004

1 e4 Nf6 2 Nc3 d6 3 d4 Nbd7 4 Be2 e5 5 Nf3 c6 6 0-0 Be7 7 Re1 0-0 8 a4 Qc7 9 b3 Re8 10 Ba3 Nf8 11 Qd2 Bg4 12 Nh4 Bxe2 13 Rxe2 exd4 14 Qxd4 d5 15 Bxe7 Rxe7 16 Nf5 Re5 17 f4 Ree8 18 e5 Ne6 19 Qd2 d4 20 exf6 dxc3 21 Qxc3 Nxf4 22 Nh6+ Kf8 23 fxg7# - **T Mordue v M Moulton**; Gloucester 1990