

NEW ENGLANDER

Chess Club Update – April 2011

Chairman's Chatter

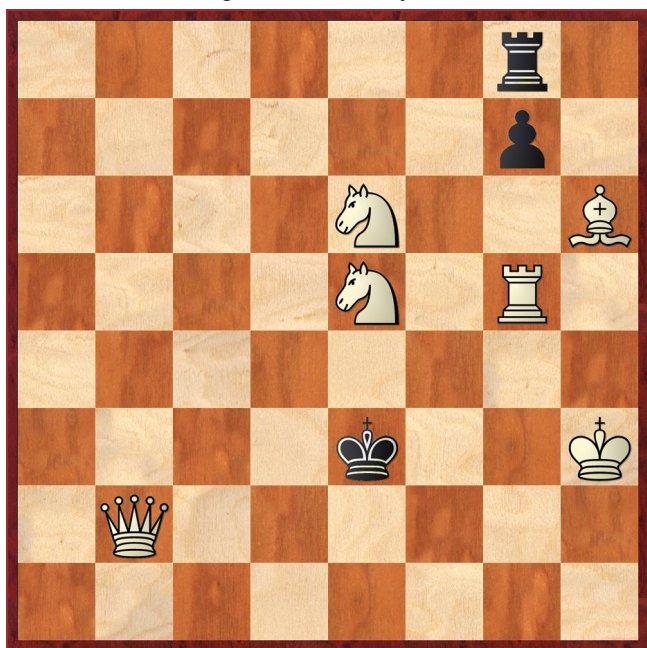
Bad news. The English Chess Federation has lost all its government funding and is looking for ways to raise cash. One proposal was to impose a levy of £18 p.a. on all players but the reaction means that this is likely to be counter-productive. They will probably go for a range of sources including a £4 per player fee. There is an ongoing web discussion of the options on <http://www.ecforum.org.uk/viewtopic.php?f=25&t=2801>.

On a brighter note, congratulations to Chris Ross who is club champion again after another emphatic performance. Is his new chess clock giving him similar computer assistance as in the cheating scandal surrounding the French Olympiad team?

Paul Hanks

Puzzle Problem

White to play and mate in 2. When Barden gave this problem by Sam Loyd in the Guardian, his solution started with an illegal move! Can you do better?



Last Month's solution

Position: 8/4R1Q1/6p1/4N1k/8/6N1/8/5K2

1 Kf2 Kf4 2 Qf6# [1 ... Kh4 2 Qh6#]

Website to Watch

The recession is claiming victims among top chess tournaments and the most prominent international event next month is the European Senior Championship. It is being held in Courmayeur, Italy from 4th to 12th April and can be followed on <http://scacchivda.com>.

Diary Dates

As the league programme winds down in April, there should be time to fill the gaps in the club championship cross-tables.

Result Round-up

Club Championship : at 30/03/11

Division One	CR	SC	FB	PT	PH	Total
C Ross	X	1 1	½ 1	1 1	1 ½	7 / 8
S Caraway	0 0	X	½ 0	½ 0	P 1	2 / 7
F Bowers	0 ½	1 ½	X	½ ½	1 0	4 / 8
P Turp	0 0	1 ½	½ ½	X	0 p	2½ / 7
P Hanks	½ 0	0 P	1 0	p 1	X	2½ / 6

Division Two	RJ	CR	AB	DL	NW	SW	Total
R Jones	X	2	1	1 1 1	1 ½		7½ / 8
C Russell	0	X	1	p	2	p	3 / 6
A Brookbanks	0	1	X	1 ½		1	3½ / 6
D Lane	0	p	0	X	0 1 1		2 / 5
N Wedley	0 0	0	½ 1		X	0	1½ / 7
S Walker	½ 0	p	0	0 0	1	X	1½ / 6

Division Three	MT	DS	KT	HC	SS	PS	Total
M Tarabad	X	p	P p	1 0 0		?	1 / 3
D Sivell		p X	p P p			0 p	0 / 1
K Talnikar	p P P	p	X		p	p	0 / 0
H Currie	1 0	p		X	0 0	p	1 / 4
S Sitaram		1	p	1 1	X	P 0	3 / 4
P Spencer	?	p 1	p		p 1	P X	2 / 2

Cambridgeshire County Chess Leagues

St Neots	0	New England A	5
S Foster	0	C Ross	1
C Emery	0	F Bowers	1
C Norton	0	P Hanks	1
M Barker	0	P Turp	1
B Annison	0	I Ramdewar	1

Buckden A	3½	New England B	½
S Foster	½	R Jones	½
P Barkas	1	D Lane	0
C Emery	1	A Brookbanks	0
C Norton	1	M Tarabad	0

New England B	1½	Buckden B	2½
R Jones	½	A Young	½
D Lane	0	C Hamilton	1
A Brookbanks	1	C Money	0
M Tarabad	0	A Ellul	1

Team 550 Competition

Warboys N	½	New England 1	3½
B Duff	½	P Hanks	½
Default	0	C Russell	1
M Onyons	0	A Brookbanks	1
D Wardle	0	S Walker	1

Match of the Month

In the car before this game, I was discussing with Chris Ross a game of mine that had appeared in a previous newsletter. It started with an inferior version of the King's Indian Defence and Chris was scathing about an early b2-b4 thrust on my part. After this criticism, I would never dare to repeat such a thing...

P Hanks v F Bowers

Club Championship Rd 4; 02.02.11

1	d4	Nf6
2	c4	g6
3	Nc3	Bg7
4	e4	d6
5	Nf3	0-0
6	Be2	Nc6

I can't find a grandmaster game since 1970 that features this particular move order. It is certainly thematic for the classical King's Indian Defence.

7	0-0	e5
8	d5	Ne7
9	b4	

The winning move! We have transposed into Kramnik v Kasparov, Novgorod 1997 which continued 9 ... Nh5 10 Re1 Nf4 11 Bf1 a5 12 bxa5. Gary went astray in a sharp position and never played the King's Indian again. If only he had had the benefit of seeing this game...

9	...	h6
10	Qb3	Ne8
11	c5	f5

I was already considering 12 Nxe5 Bxe5 13 f4 with attacking chances but Black can gain time for the defence with either Bd4+ or Bxc3 so I decided I needed to defend c3 and put a rook on the d file.

12	Bb2	Nf6
-----------	------------	------------

12 ... f4 is given as a mistake by Fritz but its analysis is not clear. Now I can go ahead with my plan immediately.

13	Nxe5	fxe4
-----------	-------------	-------------

If 13 ... dxe5 14 d6+ Kh7 15 dxe7 Qxe7 16 Nd5 Nxd5 17 exd5 seemed to be fairly level but White has opened the position rather than being crushed by a kingside advance in a blocked position.

14	Rad1	Kh7
-----------	-------------	------------

15 Nc4 Bf5

As the game shows, this gives White a target on d6 whereas 15 ... Nf5 is more solid. Over the board, I could not see far enough to realise 15 ... dxc5 16 bxc5 Nxd5 17 Nxd5 Nxd5 does not win a pawn. The pin on the d file looks awkward for Black and in fact, 18 Bxg7 Kxg7 19 Ne3 c6 20 Nxd5 cxd5 21 Rxd5 regains the material. I was relying on interjecting 16 d6 but felt Black had nothing to fear.

16 cxd6 cxd6
17 Nb5 Nc8

White's play looks logical but I am actually chasing shadows at this point because 17 ... a6 makes it impossible for White to carry out the threat 18 Nbxd6 due to 18 ... b5. I was surprised by Francis's rather passive reply.

18 Qg3 Ne8

The alternative 18 ... Nh5 loses a pawn to 19 Bxh5 Bxb2 20 Bxg6+ Bxg6 21 Nxb2 and the black king is exposed.

19 Bxg7 Kxg7
20 Nd4 Nd4

Both knights can occupy tasty central squares. I found it hard to decide between the text move and 20 Ne3 as they both hit the bishop on f5. My choice was swayed by the opportunities to jump into f6 and the vague notion of bringing both pieces closer to the action on the kingside. As soon as move 21, I was grateful that I was still contesting the e5 square and preventing the black queen from moving there.

20 ... Qf6

The text move causes problems and it would have been better to offer exchanges with 20 ... Qg5. White could continue the assault with 21 Qc3 Kh7 22 Ne3 Bd7 23 f4.

21 f3 Qe7

The pressure on the board is now being heightened by a time shortage. Here 21 ... e3 22 Nxe3 Ne7 and 21 ... Qg5 22 Qxg5 hxg5 23 fxe4 Bd7 24 Rxf8 Kxf8 25 e5 leave Black in trouble but still fighting.

22 fxe4 Qxe4
23 Bh5 Bh5

I was very happy with this move but only after playing it, I saw the possibility of 23 Rf4 which Fritz prefers. The point is 23 ... Qxd5 or 23 ... Qe7 meet 24 Nxf5+.

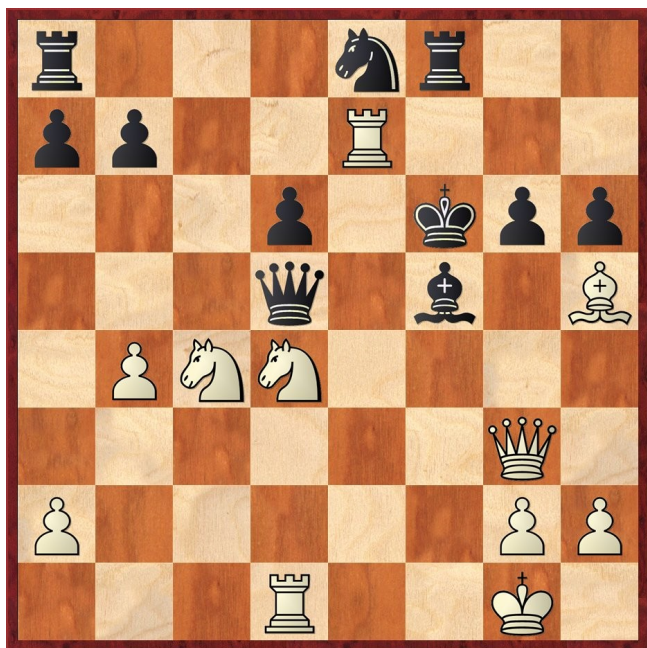
23 ... Ne7

I expected 23 ... g5 but 24 Qc3 Kg8 25 Rxf5 Rxf5 26 Re1 leaves White with too many threats or simply 24 Bxe8 when Black cannot both recapture and hold f5. 23 ... Kh8 is best but Black will lose material e.g. 24 Rf4 Qe7 25 Re1 Qg5 26 Bxg6 Qxg3 27 hxg3.

24 Rfe1

Does anyone prefer 24 Bf3?

24 ... Qxd5
25 Rxe7+ Kf6



After 25 ... Rf7, the black queen runs short of squares 26 Ne3 Qxa2 (26 ... Rxe7 27 Nxd5) 27 Nexf5+. White crashes through in the event of 25 ... Kh8 26 Bxg6. Black's move is much more fun even if the computer says White's advantage is massive.

26 Nxf5 Qxf5

A forced move. White had three pieces en prise but mating threats matter more than material advantage. So 26 ... gxh5 27 Qh4#, 26 ... Qxc4 27 Qxg6# and 26 ... gxh5 27 Rxd5 are unthinkable.

27 Rde1

If I tried 27 Nxd6, I was worried by 27 ... Qxh5 but the sharp-eyed among you will have spotted 28 Nxe8+ Kxe7 29 Qd6+ Kf7 (29 ... Kxe8 30 Qe6#) 30 Qd7+ Kg8 31 Qg7# when 28 ... Raxe8 leads to simpler mating patterns 29 Qd6+ Kg5 30 Qe5+ Rf5 (30 ... Kg4 31 Rd4+) 31 Qe3+ Rf4 (31 ... Kf6 32 Rd6#; 31 ... Kg4 32 Qg3#) 32 Rd5+ Kg4 33 Qg3#.

After the game, 27 Rf1 was suggested but I had dismissed because 27 ... Qxf1+ 28 Kxf1 Kxe7+ when White is winning but still has to demonstrate it.

27 ... gxh5

Black's monarch is helpless against the coordinated white forces with 27 ... Qxh5 28 R1e6+ Kf5 29 Ne3# being the most direct route. There are a feast of variations after 27 ... Rf7 28 Qc3+ Kg5 29 Rxf7 Qxf7 but they are all equally fruitless. You might like to work through them as a lesson in the dangers of a lonely king but here is a sample 30 Qe3+ Kxh5 (30 ... Qf4 31 h4+ Kf5 (31 ... Kxh5 32 Qxf4) 32 Qe6#) 31 Qe2+ Kg5 32 h4+ Kxh4 33 g3+ Kxg3 34 Qg2+ Kh4 35 Re4+.

One of Black's problems is that he cannot gain time and space with 27 ... Qc5+ thanks to my prophetic ninth move!

28 Nxd6

Mate is now forced in short order e.g. 28 ... Nxd6 29 Qg7#. My only regret is that I did not work this out at

move 24 as the last two moves were discovered only when the position appeared in front of me.

28 ... Qg4
29 Nxe8+ Raxe8
30 Qe5+ Kg6
31 Rg7#

Eye Opener

Perhaps I do it too much but checking your analysis is essential during a game. It often stops you overlooking for a trap in what seem to be familiar circumstances. How many times has your bishop been threatened by a "pawn to rook three" move?

Lynda Powell v Yvette Nagel (1935)
 Lloyds Bank Open, London, 1985

1 e4 c5
2 Nf3 e6
3 d4 cxd4
4 Nxd4 Nf6
5 Nc3 Nc6
6 Be2 Bb4
7 f3

I played a very similar opening as Black against Chris Russell in 2004. The slight differences included the moves Bc1-e3 and a7-a6. At the time, I was unaware of the trap featured here but thankfully, it would have not worked in the changed circumstances.

7 ... Qa5
8 Qd2 d5
9 a3

Here it is. Surely, White is wasting time because the pawn is pinned against the rook...



9 ... dx4
10 axb4 1-0

Whoops! 10 ... Qxa1 allows 11 Nb3 trapping the queen.