

NEW ENGLANDER

Chess Club Update – October 2012

Chairman's Chatter

The new season has started with our usual commitment to a full calendar of events. Our formula has proved very popular over the years but we still run into difficulties fielding full teams as we progress into the New Year. The captains have performed sterling work to avoid defaults in the past but we can make their lives easier if all club members give consistent support throughout the year.

Paul Hanks

Diary Dates

The calendar of club events is attached. Please note that we still need to fit in a home game in both the Fenland Cup and Plate. It would be helpful if we can finish Round 1 of the club championship swiftly so that with an early draw for subsequent rounds, games can be played ahead of schedule and create time for possible match postponements.

Entry forms have been circulated for the Cambridgeshire Rapidplay at Whittlesford Memorial Hall on 28th October. The latest date for entry without a surcharge is 24th October and for maximum cost-effectiveness, players need to be ECF members at the Silver level. It is your chance to grab a share of a £600 prize fund!

Closer to home, the County Individual Championship will be at ST B's Hall, Yaxley on 17-18th November.

AGM Summary

The AGM was well attended and transacted the following business :

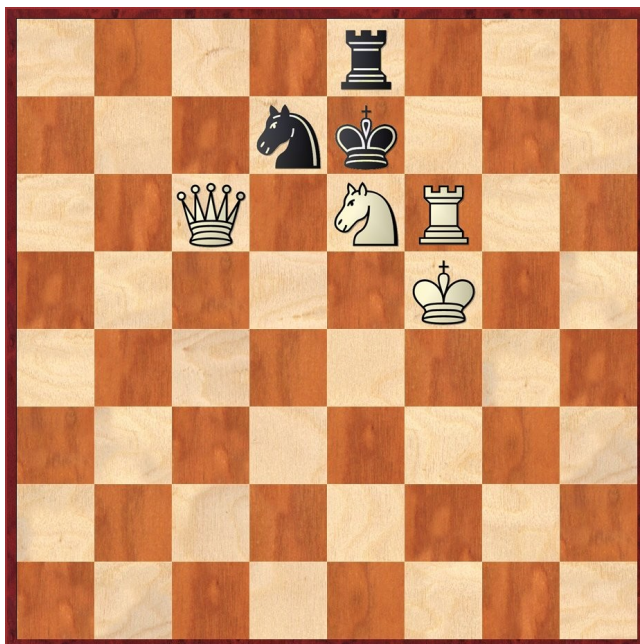
- income exceeded expenditure by £35 in 2011-12 but the balance remains small
- subscriptions were changed to be the sum of Lancaster Club membership (£15) + £5 (except for OAPs) + ECF membership (£12 on-line) payable immediately to the club treasurer, C Russell
- the committee was re-elected en bloc except for Paul Spencer taking over the role of second team captain and Chris Russell resuming the duties of secretary
- captains' reports reflected early season success but with dwindling support when the New Year was reached, only modest league positions were achieved
- team entries and internal competitions were maintained as last year with the format and additional fixtures (e.g. a challenge match) being decided according to the availability of free club evenings.

Website to Watch

Until 4th October, you can catch the tail-end of the FIDE World Championship qualifier in London at the website <http://london2012.fide.com>. The big names missing from this event are playing in the Masters Final split between Sao Paulo (24th-29th September) and Bilbao (8th-13th October) with details on the website www.bilbomastersfinal.com/en/home/.

The European Club Cup runs from 10th to 18th October in Eilat, Israel and its website www.ecc2012-chesseilat.com seems better prepared for live games than the Masters Final.

Puzzle Problem



Last Month's solution

Position : 8/1R6/3N2K1/3k4/6p1/6Q1/8/6B1

1 Ne8 Ke6 2 Qd6# [1 ... Ke4 2 Nf6#; 1 ... Kc4 2 Qb3#; 1 ... Kc6 2 Qg2#]

Window on the Web

The closing ceremony of the 40th Chess Olympiad took place in Istanbul on 9 September. For those who like to watch chess videos, there are many games from the Olympiad on *You Tube* in over 160 videos, many of them presented by GM Daniel King (titled *Play of the Day*) and by the ubiquitous IM Andrew Martin (*Game of the Day*). King shows game excerpts and Martin presents a full game for each round in his usual confident and incisive style. Go to www.youtube.com and search for 'Istanbul Olympiad' to find these very professionally produced and instructive videos.

www.susanpolgar.com is the website of the famous Hungarian-American chess GM who was Women's World Champion from 1996 to 1999. She is the only World Champion (male or female) to win the World Blitz, Rapid and Classical World Championships. Here there are details of the circumstances surrounding FIDE illegally stripping her of the World Championship title she won in 1996 after she refused to play in the title defence arranged in illegal conditions by FIDE.

There are 6 of her favourite games which can be downloaded as PGN files or played through by following links to Chessgames.com. An interesting part of the site is Susan's blog, with a couple of tactics puzzles, chess news reports, photos and videos.

Ron Jones

Result Round-up

Mini-Lightning : 12th September 2012

	Player	S C	F B	P S	P H	N W	S W	J P	I G	Total
1	S Caraway	X	0	1	½	1	1	1	1	5½
2	F Bowers	1	X	1	½	0	0	1	1	4½
	P Spencer	0	0	X	½	1	1	1	1	4½
	P Hanks	½	½	½	X	1	1	0	1	4½
5	N Wedley	0	1	0	0	X	1	1	0	3
6	S Wozniak	0	1	0	0	0	X	1	1	2
	J Parker	0	0	0	1	0	0	X	1	2
	I Garrett	0	0	0	0	1	1	0	X	2

Club Championship

Round 1			
White		Black	
J Parker	? ?	N Wedley	
D Lane	0 1	F Bowers	
H Currie	0 1	P Turp	
R Jones	½ ½	S Walker	
C Russell	P P	I Garrett	
M Tarabad	P P	S Caraway	
P Spencer	P P	M Dunkley	
S Farrington	P P	P Hanks	

Match night : 26th September. Deadline : 28th November.
Next draw : 1st December

New England Club Ladder

White		Black	
F Bowers	1 0	J Parker	
S Caraway	1 0	I Garrett	
N Wedley	0 1	P Spencer	
S Wozniak	½ ½	P Hanks	
P Hanks	½ ½	S Caraway	

Position	Change		Player	Record 30/09/12
	Month	Overall		
1	+14	+14	F Bowers	1
2	-	-	H Currie	
3	-2	-2	J Parker	0
4	-1	-1	S Farrington	
5	-1	-1	R Jones	
6	-1	-1	P Spencer	1
7	-1	-1	P Turp	
8	-1	-1	M Tarabad	
9	-1	-1	N Wedley	0
10	-	-	D Lane	
11	-2	-2	S Caraway	1,½
12	-1	-1	P Hanks	½,½
13	-1	-1	S Wozniak	½
14	-1	-1	I Garrett	0
15	-1	-1	S Walker	

New England Grand Prix

Player	Champ	Ladder	League	Cup	Team 550	Total
F Bowers	1	1				2
S Caraway		1½				1½
P Hanks		1				1
P Spencer		1				1
P Turp	1					1
R Jones	½					½
S Walker	½					½
S Wozniak	-	½				½
C Russell		-				0
D Lane	0					0
H Currie	0					0
I Garrett		0				0
J Parker	?	0				0
M Dunkley		-				0
M Tarabad						0
N Wedley	?	0				0
S Farrington						0

Match of the Month

In the Masterclass sessions during the summer, we started a journey. Previously, we had studied various topics sometimes over a period of several weeks but with the subject chosen essentially at random. The approach this year was to add some structure to the tuition course and to put our attempts at improvement on a more systematic footing.

The goal to raise our standard of play is ambitious, will probably extend over more than one summer and

include work during the season! This article will cover the basic outline of the Masterclasses so that those who were unable to attend will be able to join and participate in the quest.

The first task was to define an ideal process for playing chess. We can then measure ourselves against it and thereby identify our own weaknesses. As an overview, let's examine how chess decisions should be made in flow chart format (Figure 1) before discussing the component parts in more detail.

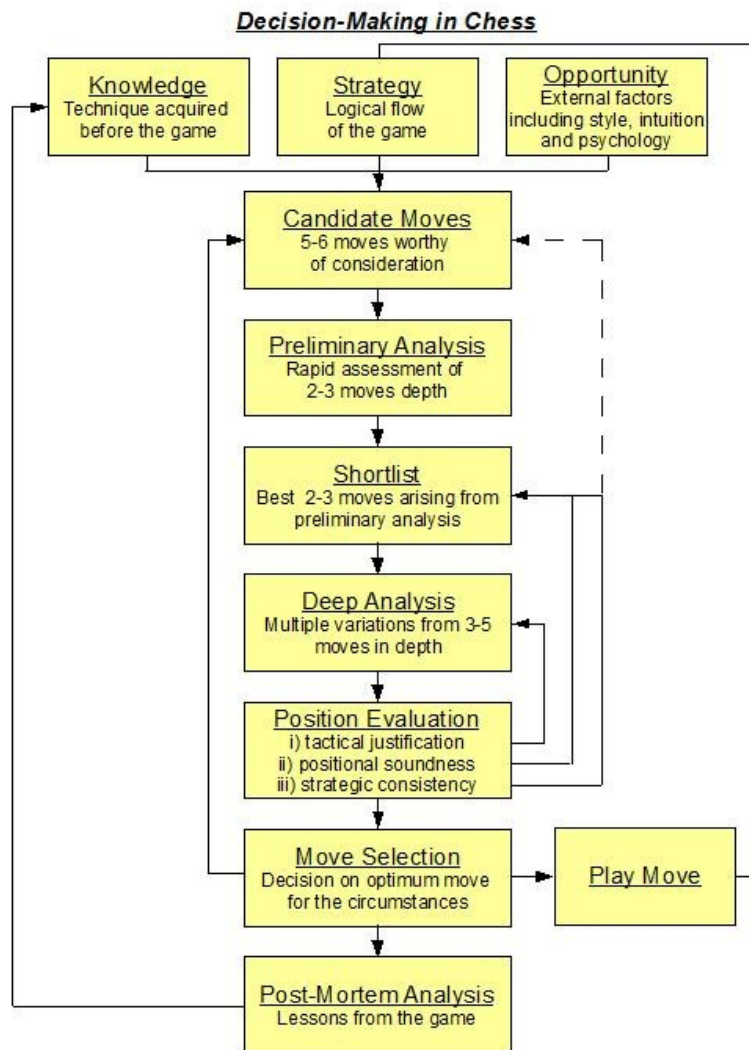


Figure 1 Flow chart for decision-making in chess

A Knowledge

Before sitting at the board, we need a considerable amount of technique. Obviously encompassing the rules of the game, this should also include familiarity with some opening theory, basic endgame play and the elements of tactics. As our experience increases, this database should be constantly expanding and enable you to play with confidence especially during the early part of the game.

At more advanced levels, background knowledge would entail some preparation for your opponent in terms of strength and style.

B Strategy

After the opening phase, we should be guided by our strategy which can be summarised as the "logical flow of the game". More practically, this requires us to take stock of the imbalances in the position, decide which can be favourably exploited and visualise the outline of a target position that is 5-10 moves ahead. The plan, however, must be realistic and take account of potential counterplay by our opponent.

C Candidate moves / Preliminary analysis

Strong player consider a wide array of alternatives. At key moments, we should suggest about 5-6 moves to

ourselves and perform a preliminary analysis. This is likely only to be 2-3 moves in depth and aims to discover any immediate errors.

D Shortlist / Deep Analysis

The most promising options from the list of candidates should be selected for more rigorous analysis. The depth of the analysis will depend on the nature of the position but a typical average (which does not tax the time control!) is likely to be 3-5 moves. This will be the most important area for accurate visualisation.

E Position evaluation

Few variations will end with checkmate or a decisive material advantage and it is necessary to evaluate the position in which we had to terminate our analysis. Here we will need to weigh such factors as king safety, piece coordination, space advantage and pawn structure to determine the merit of a particular line of play.

Should we reach a negative assessment, we may need to look again at the deep analysis for better options or even revisit/expand the candidate moves.

F Move selection / Opportunity

When you find the strongest move objectively, you should play it. But life is rarely that simple. Sometimes, there may be little to choose between two variations or the complexity is such that there is a lot of uncertainty. In these cases, decisions may be made on the basis of that we understand or are happiest with a certain style of position, want to shock our opponent with an unexpected resource or accept a risk out of desperation.

Ideally, our level of control should mean we remain consistent with the strategy and the game continuation advances us towards the target position (and eventual success!).

G Post-mortem analysis

After all games, we should review our performance. Some things will have gone right and we shall have overlooked a lot. Our aim should be to draw out the general features of the play rather than particular quirks and add the lesson learnt to our knowledge base for future games.

So, based on the above, what are my resolutions for new season?

- In the opening of most games, I wish to reach move 10 in comfort knowing the thematic options and basic strategies.
- In the ending, I will recognise the target outcome and method of play in king + piece v king and king + rook + pawn v king + rook positions.
- I shall concatenate target positions at 5-10 move intervals so as to have a strategic intent throughout the game.
- In key positions, I shall consider and quickly assess 5 candidate moves.

- My analysis of 3-5 moves in depth will contain no strong tactical error or miss a significant alternative move from my opponent.
- My position evaluation will be more systematic in seeking and classifying imbalances.
- I shall conduct a post-mortem on all my games recording game analysis and my performance against these goals.

As an example, here is a game from a few years ago that I did annotate shortly afterwards for my own consumption.

P Hanks (Perkins) v **M Misson** (Warboys)
Fenland Cup, 29.09.2004

1 d4 Nf6 2 Nc3

Some time ago, I won a dubious King's Indian Defence against Marcus so I decided to vary without really knowing what I was doing. I hope it doesn't show...

2 ... d5 3 Bg5 c5 4 Nf3 Nc6 5 e3 e6 6 g3

A curious choice. Normally, I would regard a fianchetto as weak if the king's pawn has moved because the king's knight becomes vulnerable to a pin. Here, I felt Black's light-squared bishop was hemmed in behind its own pawn barrier - I shall plan to keep it that way. The mistake was not taking due regard of the restricted mobility of the bishop on g5 which has to be exchanged.

6	...	Be7
7	Bg2	h6
8	Bxf6	

Told you so!

8	...	Bxf6
9	0-0	cxd4
10	exd4	0-0

Black could try 10 ... Qb6 11 Na4 Qb4 12 c3 when both sides have wasted tempi but White will take more time to bring the offside knight back into play as the outpost on c5 does not seem too permanent.

11	Re1	Qa5
12	a3	Bd7

Time to make a plan. White can plant a knight on e5 and if exchanged, a pawn on e5 will drive away the black pieces on the kingside. Then, manoeuvre the other horse to d4 to prevent the centre from opening up and giving the black bishops some scope. Bolster the knight on d4 with c2-c3 which stops penetration down the open c file and launch a kingside offensive with f4-f5. This will eventually bring the fianchetto into play with pressure on d5.

13	Ne5	Nxe5
14	dxе5	Be7
15	Ne2	Qb6

My opponent is being awkward! I don't want to play b4 as it allows a5 with growing activity on the queenside. When I played 15 Ne2, I erroneously thought I could ignore this move since after 16 ... Qxb2 17 Rb1 Qxa3, 18 Rxb7 won a piece. Whoops! I must have more

concrete analysis in tactical situations. My choices are limited as 16 ... Bc5 forces a passive rook move though after my choice, Fritz puts Black ahead and prefers 16 c3 or Nf4.

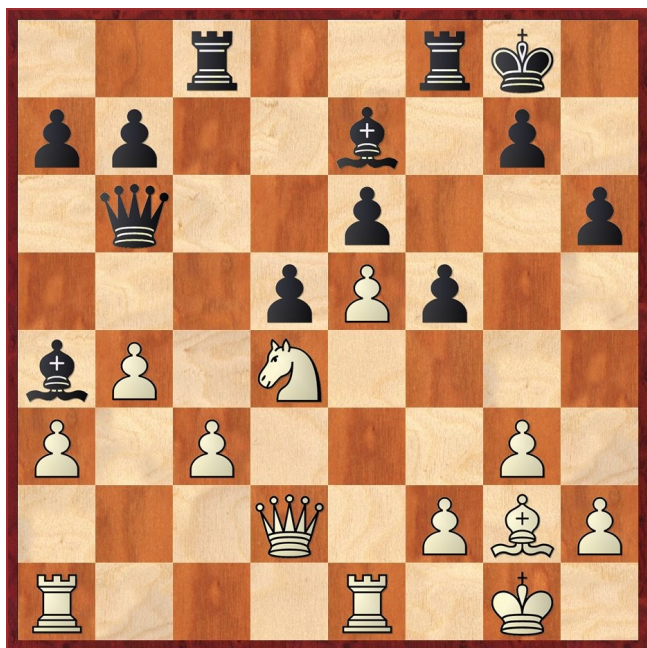
16 b4 Ba4
17 Qd2 Rac8
18 c3 f6

I did not mind this move which weakens the centre pawns. Have a look at 18 ... Bg5 as an alternative. I was still thinking of general considerations rather than real variations. Wake up!

19 Nd4

The discovered attack on the e pawn by e5xf6 must be addressed. 19 ... Bd7 is a sad retreat but is probably necessary.

19 ... f5



20 Nxe6

Bang! The simple tactic 20 ... Qxe6 21 Bxd5 smashes Black's position. Unfortunately, time was getting short...

20 ... Rxc3

Not the strongest objectively but a nice try at complications (which I had not analysed).

21 Bxd5

I was expecting 21 ... Rcc8 when 22 Nc5+ and 23 Nxa4 give a large material advantage.

21 ... Rc2
22 Nd4+ Kh8
23 Nxc2

The game is now won for White but some care is still needed.

23 ... Bg5
24 Ne3 f4
25 gxf4 Rxf4

Black's attacking forces need support to create serious threats and Bc6 will come into play at some

point. 26 Rac1 has defensive and attacking possibilities.

26 Rac1 Rg4+
27 Kh1 Rd4
28 Rc8+ Kh7
29 Bg8+ Kg6
30 Qa2

This should have been obvious but I didn't notice it for some time. The direct threat 31 Qf7# doesn't give Black time to follow up Bc6+. White also threatens 31 Qb1+.

30 ... Bxe3 31 Qf7+ Kg5 32 Qxg7+ Kh4 33 Qg3+ Kh5 34 Bf7+ 1-0

So how did I perform?

I freely admit that I was groping in the opening and did not achieve the aim of reaching move 10 with confidence (score 5). I am deducting 1 for each uncertain move. Note that Fritz tells me that Black had an easy advantage from the opening.

In terms of strategy, I like the comments around move 12 (1 point) and they seem to remain valid until move 20. But where were the subsequent 2-3 reviews?

At no point did I record considering as many as 5 options (though I may have done at move 30). With updated software since the time of annotation, Fritz gives three instances where I should have widened my search - at moves 16 (Nd4), 19 (Nf4) and 24 (Qc3).

Sadly, my "deep" analysis at move 18 highlights a flaw and I overlooked Black's response at move 20. Likewise, there is scant information here about my evaluation of future positions.

My post-mortem technique is obviously inadequate. I have not given analysis variations in sufficient quantity or depth and not differentiated between those I saw at the board and those found afterwards (in red ink). I also make no mention of my judgement of visualised positions for later checking with the aid of software or list any conclusions. I did, however, perform a game annotation in timely fashion so I deserve a token 1 point.

Target	White v M Misson		
	Max	Score	%
Opening knowledge	5	0	0
Ending knowledge	-	-	-
Strategic reviews	4	1	25
Candidate moves	3	0	0
Deep analysis	2	0	0
Position evaluation	?	?	?
Post-mortem	1	5	20

In a game I won, my method was woeful. Of course, that means I have plenty of room for improvement. Next summer, I intend to run Masterclasses based on performance during the coming year and I hope everyone will want to contribute their experiences.

New England Chess Club Fixtures 2012-13

Updated 17 September 2012

Club Championship		League Match		Internal Event		
H = home A = away		Fenland Knock-Out		County Event		
Day	Date	All Club	A Team	B Team	550 team 1	550 team 2
Wed	5 Sep	Club AGM	←	←	←	←
Wed	12 Sep	Mini-Lightning	←	←	←	←
Wed	19 Sep	Club Ladder	←	←	←	←
Thur	20 Sep	North v South	←	←	←	←
Wed	26 Sep	Champ Rd 1	←	←	←	←
Wed	3 Oct	→	H v Royston	←		
Wed	10 Oct	→	→	→	A v New Eng 2	H v New Eng 1
Mon	15 Oct	→	→	→		A v St Neots
Wed	17 Oct	→	→	H v Spalding	←	←
Wed	24 Oct	→	H v St Neots	←	←	←
Sun	28 Oct	Rapidplay S	←	←	←	←
Wed	31 Oct	→	→	H v Pboro B	←	←
Wed	7 Nov	→	H v Pboro A	←	←	←
Wed	14 Nov	→	→	→	→	A v Warboys N
Sat	17 Nov	County				
Sun	18 Nov	Championship	←	←	←	←
Wed	21 Nov	→	H v Warboys A	←	←	←
Mon	26 Nov	→	→	→	A v Godmanch'r	
Wed	28 Nov	→	H v New Eng B	A v New Eng A	←	←
Wed	5 Dec	→	→	→	H v Warboys N	H v Godmanch'r
Wed	12 Dec	→	→	H v Buckden A	←	←
Wed	19 Dec	Xmas Special	←	←	←	←
Wed	26 Dec	No session				
Wed	2 Jan	→	→	→	H v New Eng 2	A v New Eng 1
Wed	9 Jan	→	→	A v Warboys C	←	←
Mon	14 Jan	→	A v St Neots	←	←	←
Wed	16 Jan	→	→	H v Warboys B	←	←
Wed	23 Jan	→	→	→	H v St Neots	
Thurs	24 Jan	→	A v Pboro A	←	←	←
Wed	30 Jan	→	→	H v Buckden B	←	←
Wed	6 Feb	Champ Rd 2	←	←	←	←
Thurs	7 Feb	→	→	A v Pboro B	←	←
Wed	13 Feb	→	→	→	H v Godmanch'r	H v Warboys N
Wed	20 Feb	→	A v Cambridge	←	←	←
Tues	26 Feb	→	→	A v Spalding	←	←
Wed	27 Feb	→	A v Warboys A	←	←	←
Wed	6 Mar	→	→	→		H v St Neots
Mon	11 Mar	→	→	A v Buckden A	←	←
Wed	13 Mar	Champ Rd 3	←	←	←	←
Mon	18 Mar	→	A v Royston	←	←	←
Wed	20 Mar	→	→	A v Warboys B	←	←
Mon	25 Mar	→	→	→		A v Godmanch'r
Wed	27 Mar	→	→	→	A v Warboys N	
Wed	3 Apr	Rapidplay	←	←	←	←
Mon	8 Apr	→	→	→	A v St Neots	
Wed	10 Apr	→	H v Cambridge	←	←	←
Wed	17 Apr	Champ Rd 4	←	←	←	←
Wed	24 Apr	→	→	A v Buckden B	←	←
tba		Rapidplay N	←	←	←	←
Wed	1 May	→	→	H v Warboys C	←	←
Wed	8 May	Champ Rd 5	←	←	←	←
Wed	15 May	Handicap	←	←	←	←
Wed	22 May	Champ Rd 6	←	←	←	←
Wed	29 May	Problem night	←	←	Masterclasses 5 Jun until 28 Aug	