

NEW ENGLANDER

Chess Club Update – December 2012

Chairman's Chatter

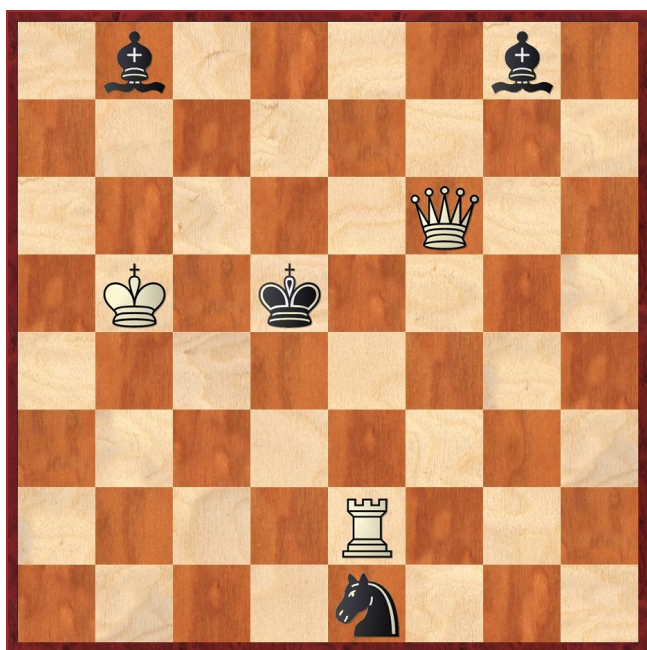
Sometimes, Christmas comes early. This year, our presents come in the form of interest from new members and we hope we can reward them equally with some enjoyable chess in the coming years.

Paul Hanks

Diary Dates

Don't miss the Christmas Special on 19th December with its usual mix of fun, games and trivia. The following Wednesday is Boxing Day when no formal club session will be held.

Puzzle Problem



Last Month's solution

Position : 6bn/7n/1Q6/7k/6R1/6K1/8/8

1 Qb1 Bd5 2 Qxh7# [1 ... Ng5 2 Rh4#; 1 ... Ng6 2 Qxg6#; 1 ... other 2 Qh1#]

Website to Watch

The London Chess Classic returns from 1st to 10th December at the Olympia Conference Centre, Kensington. British participation is down to Adams, McShane and Jones but the usual international contingent headed by Anand and Carlsen is bolstered by Judit Polgar's debut. www.londonchessclassic.com provides details.

Window on the Web

Michael Adams is currently England's second highest-rated player, equal with Nigel Short, and his website is at <http://www.michaeladamschess.co.uk>.

The home page contains some news items, some annotated games to play through and a 4 minute video *The Danny Gormally Show*, in which GM Gormally, sitting at a chess board, does impressions of Jim Plaskett, Matthew Sadler, Mickey Adams, Simon Williams, John Nunn, Stuart Conquest and Vladimir Kramnik. He is not the next Rory Bremner.

At the bottom of the home page there's a link to *older entries* with more short videos, news postings and annotated games.

There is a link to *Games* with an archive of more annotated games and a 27 minute video of GM Adams presenting a master class showing one of his games played in the Gibraltar tournament. There are other links firstly on the right of the home page, such as *Leagues*, *News* and *Results*; although these are not worth investigating if you have already followed the *older entries* links from the home page, and secondly across the top of the home page, one of which is *Telegraph*. This link allows you to view the chess articles GM Adams wrote for the *Saturday Daily Telegraph* between October 2006 and December 2011, but to read nearly 270 of these articles you will need to be fairly selective or have much more stamina than I have! The *Highlights* link documents the high points of GM Adams' career and *Sitemap* is self-explanatory. Lots of chess here especially for those who like annotated games.

Ron Jones

Result Round-up

Cambridgeshire County Chess Leagues

New England A	1½	Peterborough A	3½
F Bowers	0	A Timosenko	1
P Turp	½	C Tandy	½
S Caraway	0	R Ilett	1
P Hanks	½	G Ward	½
M Dunkley	½	M Connolly	½

New England A	3	Warboys A	2
F Bowers	1	R Mann	0
P Turp	1	J Beck	0
S Caraway	½	B Duff	½
P Hanks	0	M Misson	1
M Dunkley	½	C Watkins	½

Fenland Cup

New England A	3	New England B	1
F Bowers	½	M Dunkley	½
P Turp	1	R Jones	0
S Caraway	1	P Spencer	0
P Hanks	½	D Lane	½

Team 550 Competition

Godmanchester	2	New England 1	2
J Wright	½	P Hanks	½
A Rankine	½	C Russell	½
M English	1	P Spencer	0
M Lynn	0	S Wozniak	1

New England Club Ladder

White		Black	
H Currie	0	1	D Lane
I Garrett	0	1	S Walker
J Parker	0	1	P Spencer
J Parker	0	1	P Hanks
F Bowers	1	0	S Caraway
S Walker	0	1	N Wedley

Position	Change		Player	Record 28/11/12
	Month	Overall		
1	-	+13	F Bowers	1,1,1,1
2	+4	+2	P Spencer	1,1,1
3	+9	+6	D Lane	0,1
4	+6	+6	P Hanks	½,½,1,1
5	+4	+2	N Wedley	0,0,0,0,1
6	-4	-5	J Parker	0,1,0,0
7	+7	+6	S Walker	1,0
8	-5	-6	H Currie	0,0
9	-5	+3	I Garrett	0,1,0,1,0
10	-4	-6	P Turp	1
11	-6	-8	R Jones	
12	-1	-4	S Caraway	1,½,0,0
13	-5	-7	M Tarabad	
14	-1	-3	S Wozniak	½
15	-	-	J Sadler	

Club Championship

Round 1			
White		Black	
C Russell	1	0	I Garrett
P Spencer	0	1	M Dunkley
M Tarabad	P	P	S Caraway

Round 2

J Parker (0)		D Lane (0)
I Garrett (0)		P Spencer (0)
S Caraway (P)		R Jones (½)
S Walker (½)		J Sadler (P)
M Dunkley (1)		C Russell (1)
P Hanks (1)		M Tarabad (P)
N Wedley (1)		F Bowers (1)
J Sadler (Rd 1)		P Turp (1)
Match night : 6th February. Deadline : 27th February. Next draw : 1st March		

New England Grand Prix

Player	Champ	Ladder	League	Cup	Team 550	Total
P Turp	1	1	2½	1	2	7½
F Bowers	1	4	1½	½		7
P Hanks	1	3	2	½	½	7
P Spencer	0	3	1½	0	½	5
S Caraway		1½	2	1	½	5
D Lane	0	1	1	½	1½	4
S Walker	½	1	2			3½
J Parker	0	1	1		1	3
M Dunkley	1	-	1½	½	0	3
I Garrett	0	2			0	2
N Wedley	1	1				2
S Wozniak	-	½			1½	2
C Russell	1	-			½	1½
R Jones	½		1	0		1½
H Currie	0	0				0
M Tarabad						0
J Sadler						

Match of the Month

S Caraway v F Bowers

New England Club Ladder, 17.10.2012

1 d4 Nf6 2 c4 c5 3 e3

I wasn't expecting to find any master games that answered the Benoni Defence this way, possibly because if it doesn't feature 3 d5, it isn't a Benoni! The main line grabs space in the centre and tries to win by advancing the central pawn mass. Nevertheless, the game move has a good pedigree with Smyslov giving it an outing and Keres overrunning Mecking at San Antonio 1972 in only 28 moves.

3	...	d5
4	Nf3	Nc6
5	Nc3	Bg4

This is the point of departure (with transpositions) from the cited game. Mecking played 5 ... e6 which doesn't look very ambitious.

6	dx5
---	-----

In most queen's pawn openings, early development of Black's light-squared bishop is always vulnerable to the reply Qd1-b3 with threats to d5 and b7. Here, Black can meet 6 Qb3 with 6 ... Na5 when there is the strange continuation 7 Qb5+ Bd7 trapping the queen (8 Qxc5 e6) but for 8 cxd5.

6	...	e6
7	Qa4	Bxf3
8	gxf3	Bxc5
9	cx5	Nxd5

The computer has a strong preference for 9 ... exd5. I suppose that with a shattered kingside pawn structure, White will have king safety problems if he castles on that wing and in the centre or on the queenside, Black's isolated queen's pawn will eventually push to d4 with a strong attack.

10	Bb5	0-0
11	Bxc6	bx5
12	0-0	

12 Qxc6 Rc8 13 Qa4 Qf6 gives great compensation for the pawn and White probably cannot even hope to maintain that crumb of comfort e.g. 14 Nxd5 Qxf3

12	...	f5
----	-----	----

Black had a range of attractive options but as a kingside attack was beckoning, I thought a rook should join in.

13	Qxc6	Bd6
----	------	-----

Should I have played the surprise 13 ... Rf6 with the idea 14 Qxc5 Rg6+ 15 Kh1 Qg5 and mate to follow?

14	Nxd5	Rc8
15	Qa4	Bxh2+

15 ... exd5 16 f4 leaves me a pawn down but with the sort of activity I like. I could have continued 16 ... Qh4 and White has to find answers to Rf8-f6 and if the queen moves, d5-d4. I judged that White might have time to build a defence once the b8-h2 diagonal was blocked so I struck first.

16	Kxh2	Qxd5
----	------	------

The sacrifice may not be absolutely correct but the point is whether White's exposed king creates insurmountable problems and time stress for the defence. Besides, if nothing promising appears, I may be able to bail out with a perpetual check.

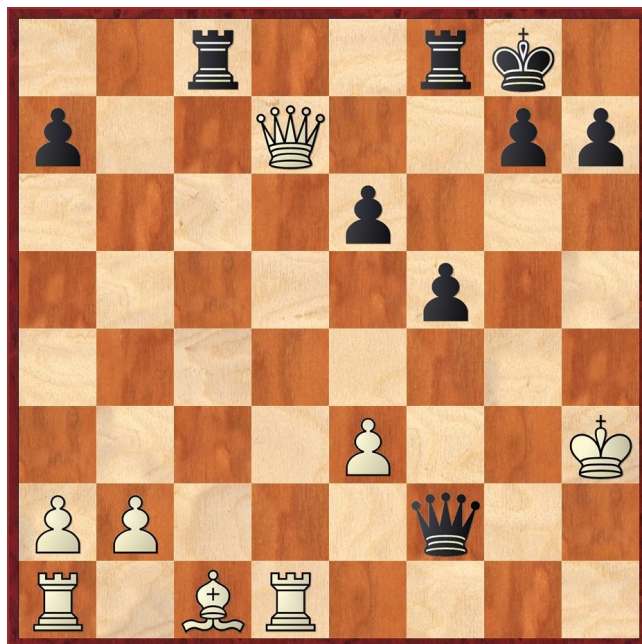
17	Rd1
----	-----

With the black queen aiming for f3, a more robust defence would be 17 Qd1 Qe5+ 18 f4 Qf6 19 Qh5 or even 17 e4 fxe4 18 Qxe4 Qh5+ 19 Kg2 Rf6 20 Bf4. Obviously, these lines are easy to point out with the benefit of hindsight (i.e. Fritz) and the pressure of over-the-board play makes White's position extremely difficult to play.

17	...	Qxf3
18	Qd7	

White is already struggling. 18 Rg1 Rf6 19 Qh4 Kh8 (19 ... Rh6?? 20 Qxh6) and the defence can't hold out.

18	...	Qxf2+
19	Kh3	



19 ... g5 looks tempting but you have to calculate a series of checks and countersacrifices e.g. 20 Qxe6+ Rf7 21 Qxc8+ Kg7 22 Rg1 Qxg1 23 Qc3+ Rf6 24 Qc7+ Kg6 25 Bd2 etc.

In fact, the strongest move is 19 ... f4 because

- 20 Qxe6+ takes protection away from the rook on d1 e.g. 20 ... Kh8 21 exf4 (21 Qg4 Rc6) 21 ... Qf3+ 22 Kh2 Qxd1
- 20 exf4 allows all Black's forces to join the mating attack 20 ... Qf3+ 21 Kh2 Rc2+ 22 Rd2 (22 Bd2 Qxf4+) 22 ... Qxf4+ 23 Kh1 Qh4+ 24 Kg1 Qg4+ 25 Kh1 Qh3+ 26 Kg1 Rf1#.

19	...	Qf3+
20	Kh2	Qh5+
21	Kg1	Qg6+

Not having the computer's ability to rebuff all defences, I decided to hold the pawn on e6 confident that the isolate white king cannot escape for long.

22	Kf2
----	-----

Indeed, other moves by White may prolong the game marginally but the prospects are grim whatever Sam chooses. 22 Kh2 f4 23 exf4 Rc5.

22	...	f4
23	exf4	Rc2+
24	Kf3	

24 Rd2 Rxf4+ 25 Ke1 Qe4+ 26 Kd1 Rf1#

24	...	Qg2+
25	Ke3	Qe2+
26	Kd4	Rc4#

Francis Bowers