

NEW ENGLANDER

Chess Club Update – February 2013

Chairman's Chatter

As you can see from the result listings, we have three postponed matches and still have to squeeze in a round of the Fenland Plate. Please try to make use of every available Wednesday for our internal competitions. Otherwise, you may find your opponent on league duty on the scheduled evening of the event.

Paul Hanks

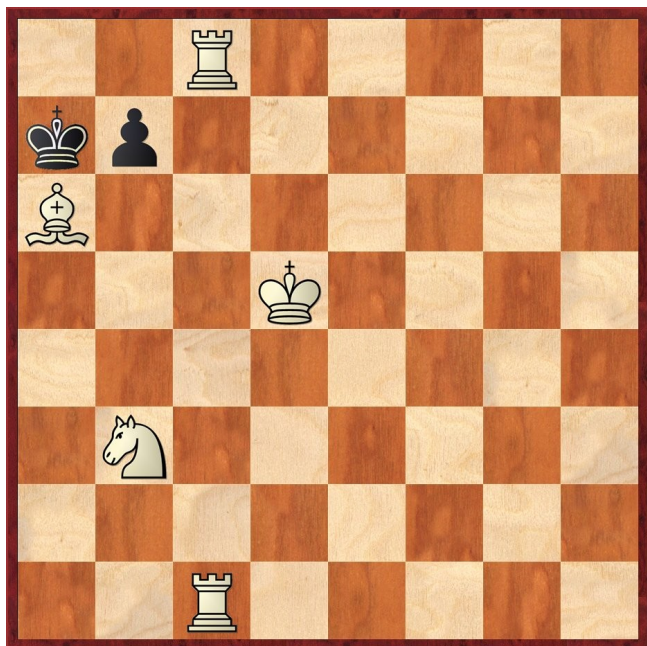
Diary Dates

As noted last month, a rapidplay event will take place on 9th February at The Iqra Academy off Bretton Way. Online entry can be made via the website www.peterboroughrapidplay.moonfruit.com.

Cambridgeshire's own rapidplay is planned for Sunday 21st April at the Paston and Gunthorpe Community Centre. Please put a note in your diary.

Puzzle Problem

White to play and mate in 3



Last Month's solution

Position : B7/8/8/8/4R3/5K2/p6p/6bk

1 Ke2 a1Q 2 Ra4# [1 ... Kg2 2 Re3#; 1 ... B any 2 Rg4#]

Xmas Special

Position : 4K2k/6p1/5nP1/2pN3P/4p3/8/8/8 (Amann)

1 Nxf6 e3 [1 ... gxf6 2 Kf8 and White's pawn queens with mate to follow] **2 Kf8 e2 3 Ng8!!** [3 Ne4? e1Q 4 Nd6 Qe7+! 5 Kxe7 Kg8= so White must control g8] **3 ... e1Q 4 Nh6! Qf1+** [4 ... gxh6 5 g7+ Kh7 6 g8Q#] **5 Nf7+ Qxf7+ 6 gxf7** winning as White promotes first.

Position : 2rn4/p6R/PP6/2P5/8/1k6/8/2K5 (Beuman)

1 Rc7 [1 Rxa7? Rxc5+ 2 Kd2 Rb5 3 b7 Rb6 4 Ra8 Nxb7=] **1 ... Rb8** [1 ... Ra8 is no better 2 Rxa7 Rc8 (2 ... Rb8 3 b7 Kc4 4 Ra8) 3 Rc7 Rb8 (3 ... Ra8 4 b7) 4 b7 Kc4 5 a7+!] **2 Rb7!!** [2 b7? Ka4 3 Rc8 Nxb7! 4 Rxb8 (4 c6 Rxc8 5 axb7 Rxc6+) 4 ... Nxc5; 2 Rxa7? Kc4 3 Rd7 (3 Rb7 Nxb7 4 c6 Nc5 5 c7 (5 a7 Re8! 6 b7 Kc3! 7 Kb1 (7 Kd1 Nd3 mating) 7 ... Re1+ 8 Ka2 Nb3 mating) 5 ... Nxa6 with a draw) 3 ... Nc6! 4 a7 Ra8 5 Rc7 Kb5 with a blockade.(5 ... Kxc5? and the pin allows White to promote 6 b7)] **2 ... Nxb7 3 bxa7 Rh8 4 a8Q!** [4 axb7? Kc3! when there is a drawing mechanism based on inability to escape the K+R mate 5 Kd1!? (5 Kb1 Rh1+ 6 Ka2 Rh2+ 7 Ka3 Rh1! 8 Ka4 Kc4 9 Ka5 Kxc5 10 Ka4 Kc4 etc) 5 ... Kd3 6 Ke1 Ke3 7 Kf1 Kf3 8 Kg1 Rg8+! 9 Kh2 Rh8+ 10 Kg1 Rg8+ 11 Kf1 Rh8!]=] **4 ... Rxa8 5 axb7 Rh8** [5 ... Rb8 6 c6 Kc3 7 c7 Rh8 8 c8Q+] **6 Kd2!** [6 c6? Kc3 drawing again; 6 Kd1? Kc4 7 c6 Kd3!] **6 ... Kc4 7 c6 Kd5 8 c7** winning.

Website to Watch

With the disappearance of the Linares tournament, February is becoming a barren month. The Moscow Open (see www.open.moscowchess.org/en between 2nd and 10th February) normally attracts a strong field but despite a long list of grandmasters, none of the elite have yet put their head above the parapet this year.

There are two smaller tournaments worth following. The Grenke Chess Classic takes place in Baden-Baden from 7th to 17th February and its website is www.grenkechessclassic.de/index.php/en. Champion Vishy Anand is among six strong players and he then goes on to participate in the Zurich Chess Challenge from 23rd February to 1st March which will see him face Kramnik, Caruana and Gelfand in a double round-robin tournament (see www.sgzurich.ch).

Window on the Web

The number of chess videos on You Tube is increasing all the time. To see what's available, visit www.youtube.com and use the search facility to look for whatever interests you, but be warned, some of the content is quite basic.

Anyone who wishes to keep up with chess news might like to visit the website for the weekly digest of chess news and games *The Week in Chess* at www.theweekinchess.com This is the magazine's new site, set up after sponsorship by the London Chess Centre ended, and it contains many reports on current and recent tournaments with links to league and tournament games.

For example, there is an interesting report on the recent 88th Hastings Masters Tournament won by Gawain Jones (no relation) and all the games can be downloaded in PGN format for viewing at leisure. The home page has links to chess news, live games from various tournaments, book reviews, TWIC downloads and a chess calendar. The site is sprinkled with advertisements for goods such as books and computer programs with links to the commercial sites selling them, such as New in Chess.

Over 6 months of back numbers of *The Week in Chess Magazine* are available to read or download in a choice of formats.

Ron Jones

Result Round-up

Cambridgeshire County Chess Leagues

St Neots	1	New England A	4
P Barkas	½	F Bowers	½
A Chapman	0	P Turp	1
C Emery	0	M Dunkley	1
S Foster	½	R Jones	½
M Friday	0	P Spencer	1

Peterborough A	3½	New England A	1½
A Timosenko	1	F Bowers	0
C Tandy	1	S Caraway	0
R Ilett	½	P Hanks	½
A Summers	½	M Dunkley	½
G Ward	½	R Jones	½

Postponed : **New England B v Buckden A**

Postponed : **New England B v Warboys B**

Warboys C	2	New England B	2
N Greenwood	1	R Jones	0
P Clough	1	P Spencer	0
P Wells	0	D Lane	1
D Bentley	0	J Parker	1

New England B	3½	Buckden B	½
P Spencer	½	C Hamilton	½
D Lane	1	A Young	0
S Walker	1	B Taylor	0
J Parker	1	A Ellul	0

Fenland Cup

New England A	1½	Royston	2½
F Bowers	½	K Clark	½
P Turp	0	A Stewart	1
S Caraway	½	P Kemp	½
P Hanks	½	S Tovey	½

TBA : **New England B v Peterborough**

Team 550 Competition

Postponed : **Warboys N v New England 2**

New England 1	2	New England 2	2
P Hanks	0	S Caraway	1
M Dunkley	1	R Jones	0
P Spencer	0	D Lane	1
J Parker	1	S Walker	0

New England 1	1½	St Neots	2½
M Dunkley	½	P Barkas	½
P Spencer	0	C Emery	1
J Parker	0	M Friday	1
A N Other	1d	D E Fault	0d

New England Club Ladder

White		Black	
S Walker	0	1	F Bowers
P Spencer	1	0	N Wedley
J Parker	0	1	S Caraway
I Garrett	0	1	F Bowers
P O'Gorman	0	1	N Wedley
F Bowers	1	0	J Sadler
I Garrett	0	1	P Hanks

Position	Change		Player	Record <small>30/01/13</small>
	Month	Overall		
1	-	+13	F Bowers	1,1,1,1,1,1,1,1,1
2	-	+2	P Spencer	1,1,1,1,1
3	+1	+7	P Hanks	½,½,1,1,1
4	-1	+5	D Lane	0,1
5	-	+2	N Wedley	0,0,0,0,1,1,0,1
6	+2	-2	S Caraway	1,½,0,0,1,1
7	-	+6	S Walker	1,0,0,0
8	-2	-7	J Parker	0,1,0,0,0,0
9	-	+3	I Garrett	0,1,0,1,0,0,0
10	-2	-8	H Currie	0,0
11	+2	+4	J Sadler	0,0,0
12	-1	-7	P Turp	1
13	-1	-10	R Jones	
14	+2	+2	P O'Gorman	0,0
15	-1	-9	M Tarabad	
16	-1	-5	S Wozniak	½

Club Championship

Round 1			
White		Black	
S Caraway	1	0	P O'Gorman

Round 2			
J Parker (0)			D Lane (0)
I Garrett (0)	0	1	P Spencer (0)
S Caraway (1)			R Jones (½)
S Walker (½)			J Sadler (P)
M Dunkley (1)			C Russell (1)
P O'Gorman (0)			P Hanks (1)
N Wedley (1)	0	1	F Bowers (1)
J Sadler (Rd 1)			P Turp (1)
Match night : 6th February. Deadline : 27th February. Next draw : 1st March			

New England Grand Prix

<i>Player</i>	<i>Champ</i>	<i>Ladder</i>	<i>League</i>	<i>Cup</i>	<i>Team 550</i>	<i>Total</i>
F Bowers	2	9	2	1		14
S Caraway	1	3½	2	1½	2½	10½
P Spencer	1	5	3	0	½	9½
P Hanks	1	4	2½	1	½	9
P Turp	1	1	3½	1	2	8½
D Lane	0	1	3	½	3½	8
M Dunkley	1	-	3	½	1½	6
J Parker	0	1	3		2	6
S Walker	½	1	3		1	5½
N Wedley	1	3				4
R Jones	½		2	0	1	3½
S Wozniak	-	½			2	2½
I Garrett	0	2			0	2
C Russell	1	-			½	1½
H Currie	0	0				0
J Sadler		0				0
P O'Gorman	0	0				0
M Tarabad	-					0

Match of the Month

Here is a lovely little game which demonstrates neatly how maxims are there to be broken on occasions. Not only once but again and again, if it serves an effective purpose. My opponent here is a respectable ECF 185 strength player so should not be taken lightly. Note how all the white pieces coordinate beautifully exploiting the light squares and targeted outposts to permit a tactical flourish capping off a very illustrative game.

Chris Ross (2247) v Dan Aldridge (2175)

Daventry A v Leamington A
Leamington Spa 13.11.2012

1	d4	d5
2	c4	dxc4
3	Nf3	e6
4	e3	a6
5	Bxc4	c5
6	0-0	b5?!

The lack of control of e4 is concerning here. More critically, Black expands on the queenside without establishing a firm grip there. The white queen's knight has not developed itself to its natural square on c3, and hence, tempo-gaining thrusts with b5-b4 are not possible. The pawn on b5 can be targeted, to put the question to the pawn chain on that flank.

7 Bd3 Bb7

Black's development seems very slow. Talking to Black afterwards, he seemed to consider this method of development satisfactory for Black. I have reflected on this and searched through the databases for substantiating evidence. Nothing that I have found about this set-up gives me encouragement. Black's kingside is slow to develop and although this is not a major factor, White is able to develop his pieces extremely quickly and take over the centre without too much effort.

8 dxc5

An important point in White's development. He wishes to target the black pawn chain on the queenside to create weaknesses. The black dark-squared bishop is forced out into an open board, where tempi can be gained due to its loose nature.

Also, it is important to open the central files for the white rooks. The black queen does not have a natural square where it can hide from the white heavy pieces.

8 ... Bxc5
9 a4

Thus, the pawn chain is hit. Black has no decent way to maintain the solid nature of that chain. Since no tempi-gaining b5-b4 ideas are around, the b5 pawn is tactically loose. This needs to be resolved.

9 ... b4

Ruling out all Black's counter-play on the queenside. The light squares are looking very promising now for White. The c4 square especially is an attractive hole for a knight to occupy.

10 Qe2

In comparison with the black queen, the white counterpart has a natural square to occupy. Tactics on f3 do not concern White, as the rook on a8 would be left loose in many combinations.

Also, the pawn on a6 has become a target. Black's development is becoming very awkward to accomplish.

10 ... Nf6
11 Nbd2 0-0
12 Nb3 Bd6

Aggressively played, but inviting tactics. The bishop's best retreat was probably e7, although the black queen would be denied her only obvious hiding square. b8 would then perhaps become the default square for the lady but again, this would make Black's development very awkward. The white knight landing on c4 will now gain time on the bishop on d6. White's plan is proceeding with admirable efficiency.

13 e4

The classical central thrust, gaining space in the centre and forcing Black into some difficult decisions. The dark-squared bishop on c1 is now brought into the game and Black is prevented from occupying the e4 square. If Black could have played Ne4, he may have claimed equality. Naturally, e4-e5 is a threat.

13 ... e5

A radical decision AND one that just gives White more light squares to play with.

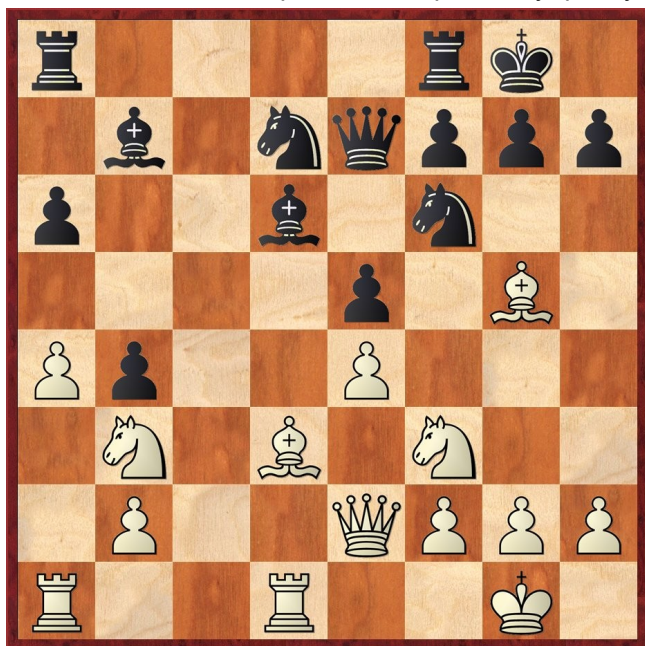
Black envisages targeting the e4 pawn, which is somewhat blocking in his light-squared bishop. This is not a consideration though, as the white knights are going to disprove a well-known maxim.

14 Bg5 Nbd7
15 Rfd1

With the rook's arrival onto the d file, tactics are becoming very important. The threat of discoveries along the d file are difficult for Black to meet. The black queen has no good square to run to. If she leaves the pin on the f6-knight, the knight on d7 is tied down defending his comrade, thus preventing it from moving. Black has a natural-looking move, but after Black pushed it out, I was fairly confident of converting the victory.

15 ... Qe7

There is no other good move for Black. He is simply all tied up with his pieces doing very little to aid each other in their task of disentangling. White's approach is decisive and Black's position collapses very quickly.



16 Na5

"Knight on the rim is dim" I hear you cry! True enough, but if the rim of the board is the way to reach a square, then that route is perfectly acceptable, as long as the manoeuvre is executed with effect.

Black's 15th move relinquished the protection of the a5 square, thus allowing the knight to land on this useful point. The knight is either heading to exchange the powerful light-squared bishop on b7, or journey to that enticing c4 outpost.

16 ... Nc5

16 ... Bc8 is playable, when White would have to decide between the tempting 17 Nc6 or the more practical and thematic 17 Nc4. Either way, White has a very comfortable game. With the disappearance of the light-squared bishop from b7, the light-squares are collapsing for Black. There is little hope now.

17 Nxb7 Nxb7
18 Nh4

Another knight on the rim! This time, we are heading for the enticing f5 square. With the pressure on e4 eliminated, a kingside attack is looming. Black's queen is again targeted and she has no useful square.

18 ... Qe6

If 18 ... g6, the f6 pin is fatal with Qf3 in the offing.

19 Bxa6

Stealing a pawn and demonstrating to Black that he has little to play on for. The retreat to c4 with the light-squared bishop will gain tempo on the black queen. Tricks are all that Black has in this hopeless position.

19 ... Na5
20 Nf5 Bc5

Attacking the bishop on a6 horizontally. Something that must not be missed! The piece concentration around the black king is fearsome though.

21 Bb5 Qb6

Setting up yet another trick. Simple traps are a sign of Black's desperation in such a position. I considered here for a while whether to take preventative measures against the obvious tactic, but ultimately decided that my overwhelming piece concentration on the kingside would be sufficient enough to convert the victory, despite Black winning back his pawn

22 Qf3

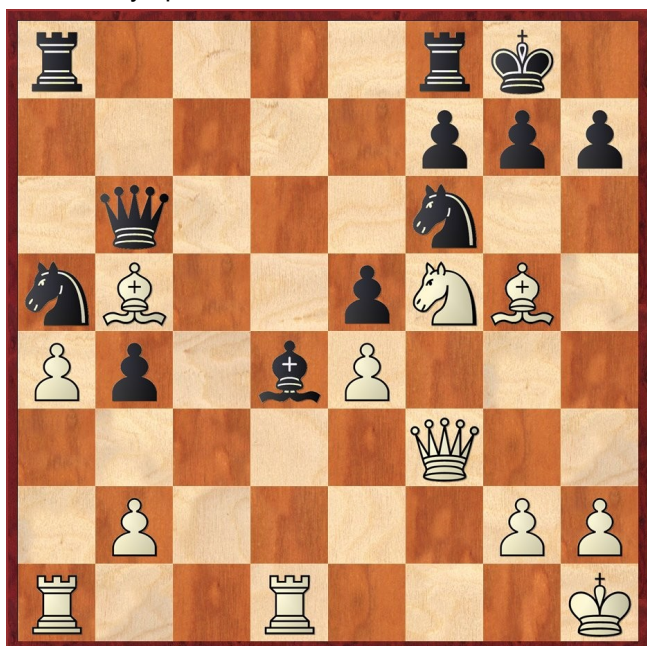
Bringing the queen to bear on the kingside and aid in the final attack. Nh6+ tactics are now threatened. Even Bh6 is an option. Much goes here and with the white knight, bishop and queen surrounding the black king, something has to fall.

22 ... Bxf2+

The trick that I decided to ignore. In fact, I thought this only aided me, as it opens the f file for a white rook, saving me having to airlift it via d3 and along the 3rd rank. The white king is hassled into the safety of the corner! Naturally, 23 Qxf2 gives Black hope. 23 ... Qxf2+ 24 Kxf2 Nxe4+ 25 Kg1 Nxg5 is something that must be avoided.

23 Kh1 Bd4

Allowing a pretty finish. 23 ... Bc5 protected the e7 square and removed the bishop from the tactics along the f file. If it had occurred, I would have had the pleasant choice of 24 Nh6+ or 24 Bh6 or even 24 Rf1. Such lovely options to have to decide between!



24 Rxd4

Neatly demonstrating that White has all the fun and tactics. The only active black piece is soon eliminated.

24 ... exd4
25 e5

The black knight on f6 has nowhere to run. The bishop pair on b5 and g5 cut out all of the flight squares. There is an aesthetically pleasing touch from the opening considerations, that the queen on f3 is hitting the rook on a8 – see the comments to any tactics with Bxf3 in the opening on move 10 – which means 25 ... Ne8 26 Qxa8 is possible.

25 ... Nb3

With minutes for my opponent to reach the time control at move 35, last-minute tactics are his only hope. I was convinced that taking on f6 would lead to a winning attack but I saw no point in worrying or wasting time on figuring out the tactics. Simple, logical chess was required here, removing all of the tactics from the position.

26 Rd1 Nd7
27 Bxd7 Nc5

Once again, there are a number of attractive wins in which to convert the kingside attack. I saw no point and took seconds in blocking the 6th rank, allowing Bf6 or Nh6+ ideas.

28 Bc6 1-0

Black held out his hand. A very thematic game, converting an opening advantage by defying the well-known maxim "a knight on the rim is dim"!

Chris Ross

Eye Opener

I don't know much about the flank openings but was surprised to learn there is something called the King's English variation. When looking around for a brevity for this article, I was scanning the games from the European Club Cup and found a game under this opening classification. Not only that but Black won in 9 moves! I had to investigate further...

D Sodholt (1954) v K O'Driscoll (2113)
28th European Club Cup, Eilat; 13.10.2012

1 c4 e5 2 g3 Nf6 3 Bg2 d5

This game follows Aronian v Shirov, Bilbao 2009 for 5 moves and in his comments, Aronian states "Many strong players prefer to play ... c6 on the third or even the second move" (*New in Chess* magazine).

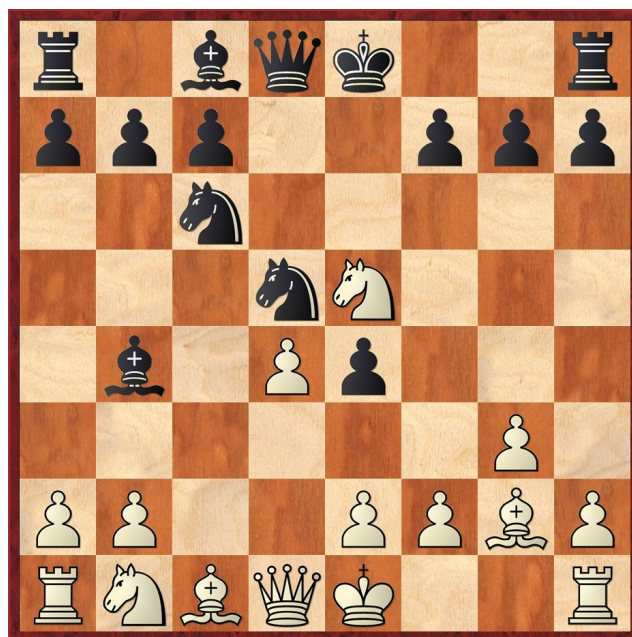
4 cxd5 Nxd5
5 Nf3 Nc6
6 d4

Here the cited game continued 6 0-0 Nb6 with the explanation "6 ... Be7 allows 7 d4 which leads to an unpleasant game for Black".

6 ... e4

An alternative is 6 ... Bb4+ because 7 Bd2 can be met by 7 ... exd4. The same motif would follow 6 ... exd4 when 7 Nxd4 costs the right to castle after 7 ... Bb4+.

7 Ne5 Bb4+



8 Kf1

Obviously not 8 Nd2 Nxe5 9 dxe5 e3 10 fxe3 Nxe3 11 Qa4+ Bd7 when Black's bishop is taboo but White's is lost. The other option 8 Bd2 looks risky due to 8 ... Nxd4 but computers are happy with the tactical soundness of White's position. Anyway, it must be the best try in view of what happens now.

8 ... Nxe5
9 dxe5 Ne3+ 0-1

The rain in Spain falls mainly on the plain...