

NEW ENGLANDER

Chess Club Update – October 2013

Chairman's Chatter

Football managers often complain about the length of their injury list. Whereas we are less likely to suffer the effects of youth and vigour, our numbers are being depleted by health problems so I hope you will all be able to support the teams and club events now that the formal season is upon us.

Paul Hanks

AGM Summary

The AGM was attended by 11 members with 3 apologies and transacted the following business :

- a belated increase in Lancaster Club subscriptions caused an overall financial loss of £20.50
- club subscriptions were increased to £36 for adult members
- reports by team captains included victory in the CCCA Division 2 and almost making the final of the Team 550 competition
- the success of the website continues with over 10,000 hits in the past year
- the committee was re-elected as previously but with P Turp taking over as A team captain and S Caraway becoming a captain in the Team 550 competition
- league competitions entries and internal event formats were unchanged except for the addition of a Summer Sprint tournament in the closed season
- consideration for other players was stressed with such examples as checking sets for completeness, packing away after games, quiet entry to the room when games are in progress and non-interference during play etc.

Diary Dates

The only Cambridgeshire Rapidplay this year takes place at Whittlesford on 20th October. Entry details will appear on www.cambschess.co.uk.

Just over the horizon for this month, the county association holds its Individual Championship over the weekend 2nd-3rd November at Fenstanton.

Website to Watch

The Russian Superfinal is always a strong event and this year's event runs from 4th to 15th October. It can be followed on <http://russiachess.org> but in the past, I have found this to be an awkward website.

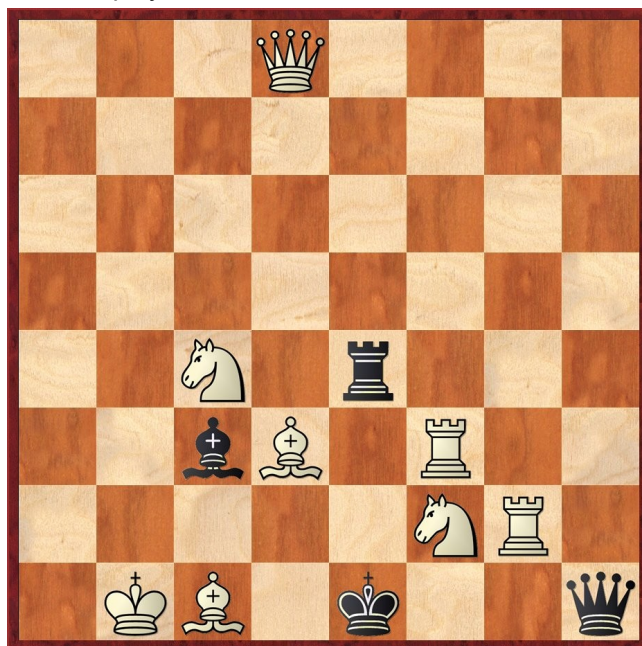
You might prefer the King's Tournament in Romania from 6th to 17th (www.turneulregilor.com) and although

it includes Caruana and Radjabov, the field does not seem as strong as formerly.

My favourite is the European Club Cup, Rhodes from 19th to 27th October. The strongest team SOCAR has Mamedyarov (ELO 2775) on board 7! The website www.rhodes2013.org looks professional and being hosted by chessdom.com should ensure its quality.

Puzzle Problem

White to play and mate in 2



Last Month's solution (Roselli)

Position : 8/8/3p4/bR1N4/BpkP4/8/1B3N2/2K2N2

1 Rb6 Bxb6 2 Nxb6# [1 ... b3 2 Bxb3#; 1 ... Nd2 2 Ne3#]

Window on the Web

The new season is upon us, with the loss of our top player to business pastures new (good luck Francis!) leading to new challenges for our league players and reserves. Some members might have found time in the last few months to brush up on their chess in the hope of improving their results, but what's the best way to improve?

An investment of both time and money is required. Building a library of chess books, DVDs or software is expensive and the time needed to study them can be considerable. Internet coaching might be an option. Of course, there are free videos on the web but the quality is variable.

One commercial site that aims to help players progress is <http://improveyourchess.com/>. GM Tony Kosten is a leading contributor, with help from other

trainers including GM Glenn Flear. The material is aimed at players from novice level up to about 170 ECF / 2000 ELO, with four categories: novice, beginner, intermediate and advanced. From the home page you can take a tour of the site. There are over 12,000 tactics puzzles, *How Good is Your Chess* presented by Danny King (familiar to readers of *Chess* magazine), strategy exercises presented by Glenn Flear, *Endgame Secrets* and *Middlegame* columns from Tony Kosten, a multiple choice quiz *Your Move*, two free e-books and access to personal coaching (at extra cost). A new set of tactics puzzles for each strength category is provided every month. They are then archived and the whole of the archive can be worked through as soon as you join. A series of articles covers the main openings.

The home page has a link to the *Gym Guide* which explains all the features to be found on the site and how best to use them.

The cost for all this? An up-front payment for first time annual membership, depending on the current GBP/USD exchange rate is about £18, payable in sterling, (equating to £0.05 a day) with a money-back guarantee if you put the work in but don't improve. After a year renewal is at a reduced rate, currently about £6 per annum.

Ron Jones

Result Round-up

Cambridgeshire County Chess Leagues

New England A	½	Cambridge	4½
P Turp	0	R Tozer	1
S Caraway	0	A Stewart	1
M Dunkley	0	R McCorry	1
P Hanks	0	C Davison	1
R Jones	½	S Pride	½

Team 550 Competition

New England 1	2	New England 2	2
P Spencer	0	S Caraway	1
J Parker	0	J Sadler	1
I Garrett	1	B Sadler	0
N Wedley	1	M Tarabad	0

Club Championship

Round 1			
R Jones			P Turp
J Sadler			M Dunkley
D Lane			P Spencer
N Wedley			S Caraway
P Hanks			I Garrett
C Russell			S Walker
M Tarabad			J Parker
Match night : 9th October. Deadline : 31st October. Next draw : 1st November			

New England Club Ladder

White		Black	
J Sadler	0	1	P Spencer
I Garrett	1	0	J Parker
M Tarabad	1	0	I Garrett
J Parker	½	½	N Wedley
S Wozniak	0	1	S Caraway

Position	Change		Player	Record <small>25/09/13</small>
	Month	Overall		
1	+9	+9	M Tarabad	1
2	-	-	S Caraway	1
3	+3	+3	I Garrett	1,0
4	-1	-1	D Lane	½
5	-1	-1	N Wedley	½,½
6	-5	-5	J Parker	0,½
7	-2	-2	F Bowers	
8	-1	-1	S Walker	
9	-1	-1	H Currie	
10	-1	-1	P O'Gorman	
11	-	-	P Hanks	
12	-	-	S Wozniak	0
13	+1	+1	P Spencer	1
14	-1	-1	J Sadler	0
15	-	-	P Turp	

Match of the Month

S Caraway v J Daughman

New England A v Cambridge, 20.02.2013

1 b4

Game annotations normally start by quoting a grandmaster game that shared the same opening. This is useful in pointing out options that may be improvements on the text moves but here, this is hardly possible. The last time the iconic publication *Informator* featured 1 b4 was in 1988 when Tony Miles gave it a couple of outings scoring a draw against Lev Polugaevsky. Even Bird's Opening appears at the highest level more often! At least, I have some experience with the opening.

1 ... d5

An infrequent response. Black often replies with 1 e5 and White tries to create an exaggerated queen's pawn game with d4, c4 and b4.

2 Nf3 Nf6

3 d4

Fritz's opening database has 3 games continuing 3 Bb2 with White scoring a creditable 66%.

3 ... Bf5

4	Bf4	e6
5	a3	a5
6	b5	Bd6
7	Bg5	h6
8	Bh4	Nbd7

Black is building a healthy lead in development and might have tried opening the position with 8 ... c5. The computer, however, is equally happy with the text move and several of Black's other options.

9	e3	c6
10	c4	

Now I have achieved the "exaggerated" structure mentioned above! 10 bxc6 was an alternative which leaves Black with temporarily weak pawns.

10	...	dx c4
----	------------	--------------

This move is quite helpful. It allows me to develop my bishop and I can aim for e2-e4 gaining space in the centre.

11	Bxc4	0-0
----	-------------	------------

There is no urgency to hide the black monarch and continuing development could prevent White from playing with a free hand e.g. 11 ... Qb6 12 Nc3 Rc8.

12	Nbd2	Nb6
13	Be2	Nbd5

Unfortunately, now is not the time to pull the trigger on 14 e4 since Black has 14 ... Nc3. Sadly, with the a3 pawn exposed, 15 Rc1 is not available to cover the c3 square and I have limited options with the queen.

14	Qb3	a4
15	Qb2	Qa5
16	0-0	

If you want a good example of the different thought patterns of humans and computers, here it is. How many of you would consider 16 ... cxb5 17 Bxb5 Bb4? After 18 axb4 Qxb5, the b pawn looks lost and Black's passed queenside pawns should decide the game. Thankfully, I have 19 Bxf6 when 19 ... Nxf6 is necessary because 19 ... gxf6 allows (you've guessed it!) 20 e4.

16	...	Qc3
----	------------	------------

Black rightly tries to exploit one of his advantages - the bishop on f5 covers b1. My rooks will be hampered if Black manages to force a passed pawn on the b file.

17	Qa2	cx b5
18	Bxb5	Ne4

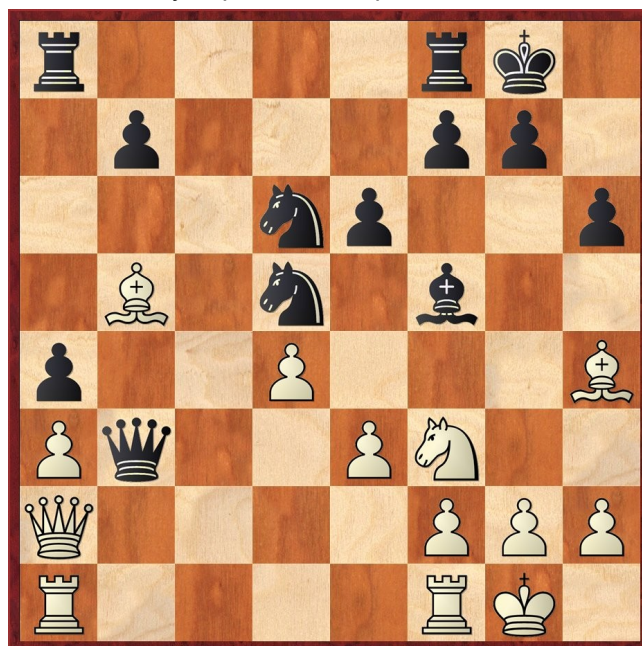
Black has other advantages and I have to worry about his piece activity.

19	Nc4	Qb3
20	Nxd6	

Black's persistent pressure puts White in a tight spot. This is the first point at which Fritz complains significantly. The software suggests shedding material by 20 Qxb3 axb3 21 Rfb1 g5 22 Rxb3 (22 Bg3 Nxg3 23 Nxd6 Bxb1 24 Rxb1 Rxa3 25 hxg3 Nc3 26 Rb2 Nd1 27 Rb1 b2 etc.) 22 ... gxh4 23 Nxh4.

20	...	Nxd6
----	------------	-------------

Where would you put the bishop?



21	Bd7	
----	------------	--

I wasn't tempted by 21 Be2 Nc3 22 Qd2 (22 Qxb3 axb3 is similar to the above) 22 ... Nde4 23 Qe1 (23 Qd3 g5 24 Bg3 Nxg3) 23 ... g5 24 Bg3 Qb2 25 Bc4 (25 Bd3 Nxg3) 25 ... b5.

21	...	Ne4
----	------------	------------

I think I was saved by the complexity of the variations. Black has 21 ... Nc3 22 Qxb3 axb3 but has to calculate 23 Be7 b2 24 Rae1 Nc4 25 Bb4 (25 Bxf8 Kxf8 and as well as the pawn promotion, the bishop on d7 is under threat) 25 ... b1Q 26 Rxb1 Nxb1 27 Bxf8 Kxf8. Instead, 22 Qd2 does not maintain parity because 22 ... g5 23 Bg3 Nde4 24 Qe1 Rfd8.

22	Nd2	Qxa2
----	------------	-------------

Black gives up most of his advantage. He really should be trying to compel White to make this capture and profit from the resulting passed pawn. After 22 ... Nxd2 23 Qxd2 Nb6 24 Be7 Rfb8 would leave the bishop gasping for air.

23	Rxa2	Nec3
24	Rb2	Bd3
25	Re1	b5
26	Bc6	Rac8

With its superior foresight (not to mention nerves of steel), the computer has the temerity to point out the dangerous possibility 26 ... b4 27 Bxa8 bxa3 28 Rb7 Rxa8 29 Ra1 (otherwise Black plays a2 and Nb1) Ne2+ 30 Kh1 (30 Kf1 g5) Rc8 when White has a nominal material plus but will struggle to enjoy it.

27	Bxd5	exd5
28	f3	g5
29	Bg3	Ne2+
30	Kf2	Nxg3
31	hxg3	Rc3
32	Nb1	Rc2+

Black is not finishing clinically. He could have played 32 ... Rb3 when yet again, he creates a passed pawn after 33 Rxb3 axb3 with a better ending.

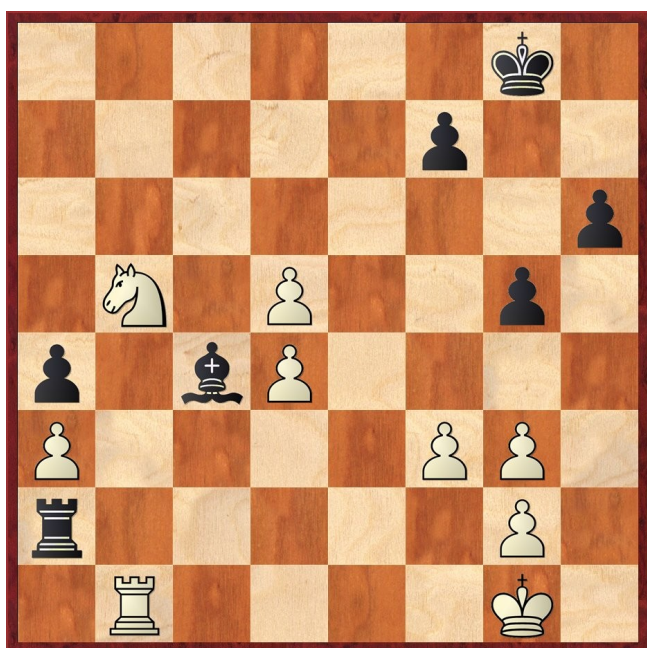
33 Rxc2 Bxc2
34 Nc3

My knight comes back to life! Black's queenside pawns are now a liability.

34 ... Bb3
35 Nxb5 Rc8
36 e4 Rc2+

The time control has been reached. At this point in the match, three of the games had already been drawn and we seemed to be in grave difficulty on top board. A win was essential for the team to come away with anything!

37 Kg1 Bc4
38 Rb1 Ra2
39 exd5



39 ... Rxa3?? 1-0

My opponent avoids 39 ... Bxd5 40 Nc3 but makes a sad mistake even before time pressure became too acute. Black resigned when a possible continuation could have been 39 ... Bxb5 40 Rxb5 Kf8 41 Rb7 f5 42 Ra7 Rxa3 43 g4 f4 44 f4 g4 Ra2 45 Kh2 a3 46 Kg3 Rd2 47 Rxa3 Rxd4 48 Ra5 Ke7 49 Kf3 Kd6 with a draw in prospect.

Perhaps I could increase the pressure (e.g. 41 d6) and try to coax my opponent into a technical error but it would help if I could postpone the crisis until the time control becomes an additional factor.

What's your verdict?

Sam Coraway

Eye Opener

In his "Window on the Web", Ron dropped a none too subtle hint that we should all improve our play. And I think he must mean me. He may not be referring directly to my poor run of recent form but rather my

Website : www.newenglandchess.org.uk

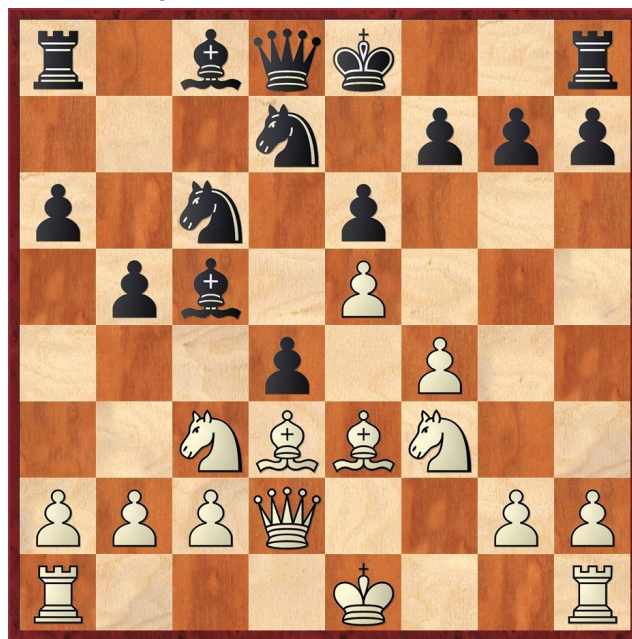
increasing difficulty in understanding published games. When reading a recent issue of *New in Chess* magazine, I came across the following game between elite grandmasters. The moves did have brief comments but I was left needing an explanation of the explanation.

See how helpful they are to you...

S Karjakin (2782) v V Topalov (2793)
Kiev Sberbank Rapid 2013

1 e4 e6 2 d4 d5 3 Nc3 Nf6 4 e5 Nfd7 5 f4 c5 6 Nf3 Nc6 7 Be3 a6 8 Qd2 b5 9 dxc5 Bxc5 10 Bd3 d4

"Not as strong as it looks."



11 Nxd4 Nxd4
12 Ne4

"The point."

The problem is that I cannot see the point (and presumably neither could Topalov at move 10). Like you, I followed the diagrams mentally. White is ahead in development but a piece is a piece! Then I set up the pieces and eventually, I saw the classic trap in the French Defence using a discovered check to unmask an attack on d4 e.g. 12 ... 0-0 13 Nxc5 Nxc5 14 Bxd4 Qxd4 15 Bxh7+.

Surely though, if the black king stays on e8 and the knight on d7 is not displaced by the exchange on c5, there is no discovered check. It took Fritz to point out that the bishop is highly uncomfortable. It cannot retreat (12 ... Bb6/a7 12 Nd6+ Ke7 13 Be4 attacking d4 and a8) or be supported (12 ... Qb6 13 Nxc5 Qxc5 14 c3) without returning the material.

Obviously, I did not look at enough options when evaluating the discovered attack. Lesson learned!

The game continued

12 ... Qh4+ 13 Bf2 Qg4 14 Bxd4 Bxd4 15 Nd6+ Ke7 16 Be4 Bxb2 17 Rb1 Ba3 18 Bxa8

and White went on to win in a few more moves.

Paul Hanks