

# NEW ENGLANDER

## Chess Club Update – March 2015

### Chairman's Chatter

No-one loves computers. A gripe I have is that they will list files starting "10xxx" before "2xxx" due to its character-by-character comparison. I learned this when trying to keep my newsletter files in chronological order and found issue ten appeared before issue two. Simple! Just add a zero before the first digit and "02xxx" comes second as required.

But what about the 100<sup>th</sup> issue? I decided to add two leading zeroes... It seemed a long way off in August 2007 but here it is! In the mean time, we have won both the first and second divisions of the county league, shared the title in the Jamboree and won our division of the Team 550 competition twice. Our task now is to ensure our best results are not all behind us.

*Paul Hanks*

### Diary Dates

Please remember our RAFA hosts at the Lancaster Club hold their AGM on 4<sup>th</sup> March. We lose the venue for that evening and there will be no formal club night.

The Club Championship restarts on 11<sup>th</sup> March. The draw appears in this issue and is slightly distorted because Nick joined in round 3. As he has to make up time, one pairing has been split to give him two extra games to be arranged by mutual agreement.

The Cambridgeshire events organiser has fixed the date for the end-of-season Jamboree. It is easy to remember – 7<sup>th</sup> May – on general election night!

### Website to Watch

After plenty of major events last month, March is a time of famine. The Petrov Memorial on 7-8<sup>th</sup> March is a rapidplay event but [www.sahafederacija.lv/?p=7596](http://www.sahafederacija.lv/?p=7596) may not carry live transmissions. The esteemed Reykjavik Open on 10-18<sup>th</sup> March should carry the games on [www.reykjavikopen.com](http://www.reykjavikopen.com).

### Window on the Web

As a veteran player, I am often surprised while looking at chess websites (or even books) to realise how much technical chess knowledge I have acquired over the years that I fail to put into practice while playing. Maybe I have forgotten some of it, or am guilty of lazy thinking such as assessing my position as OK just because it "looks good" rather than bothering to assess, say, colour weaknesses or establishing whether I have a space advantage by actually counting the number of squares covered by my pieces. Perhaps I need to revise?

I recently found [www.chess-game-strategies.com/](http://www.chess-game-strategies.com/) which is aimed primarily at improving players but has plenty of content that experienced players might find

instructive. There is a site index with links to a play area where you can either play against the *Spark Chess* program or be directed to other sites to solve puzzles. Other links take you to free chess analysis tools and to guides on tactics, strategy, openings and endgames, plus guides specifically aimed at children, beginners and "advanced beginners". The latter is based on the subject matter of the 1960 book *Point Count Chess*. One of the concepts covered is Bent Larsen's "8 Questions for assessing candidate moves". Another is the difference between occupation and control of a square and the idea that a piece can be a square's owner, renter or squatter!

One of the analysis tools is *Chess Openings Analyser* which is based on theories found in GM Yasser Seirawan's *Winning Chess* books, available as a free download because it is a beta version although said to be fully functional.

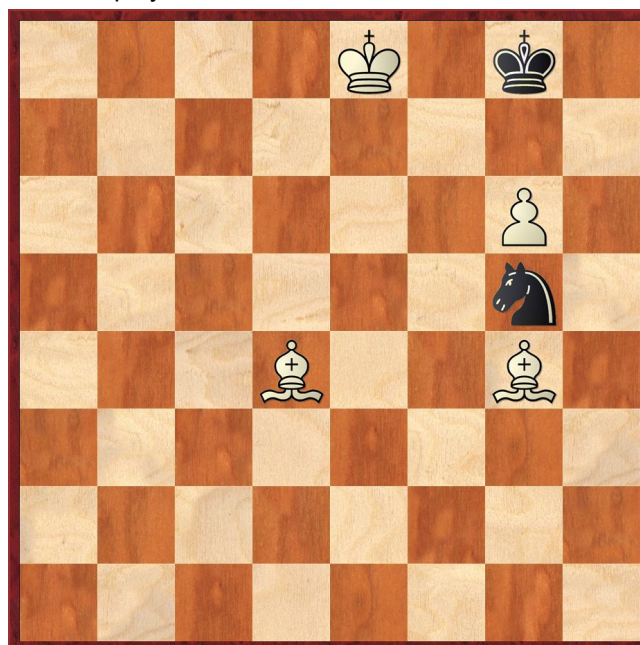
The Strategies Guide is surprisingly comprehensive and discusses various pawn structures including Seirawan's ideas on acceptable types of doubled pawns. (Such pawns are not all "bad".)

There is even an extensive section devoted to instructive videos by the likes of Igor Smirnov (*Winning Patterns, The Secrets of Strong Players*), and Susan Polgar. Also included are several of Yasser Seirawan's lectures for the *St Louis Chess Club* (which I reviewed in April 2013).

*Ron Jones*

### Puzzle Problem

White to play and mate in 2



Last Month's solution (Hanks 2015)

Position : nR6/3pk3/1N3p2/2R1P3/8/8/B4B2/K7

1 Rc6 dxc6 2 Bc5# [1 ... d6/d5 2 exd6#; 1 ... fxe5 2 Bh4#; 1 ... Nxb6/Nc7 2 exf6#]

## Result Round-up

Cambridgeshire County Chess Leagues

St Neots	2½	New England A	2½
A Chapman	½	P Hanks	½
P Brown	½	M Dunkley	½
P Barkas	½	P Turp	½
J Dunn	0	D Lane	1
R Palumbo	1	J Sadler	0

Royston	4½	New England A	½
D Coleman	1	P Hanks	0
S Doci	½	P Turp	½
A Stewart	1	J Sadler	0
K Clark	1	C Russell	0
P Kemp	1	J Parker	0

New England A	2½	Warboys A	2½
P Hanks	½	R Mann	½
S Caraway	0	C Watkins	1
P Turp	1	M Misson	0
D Lane	0	N Greenwood	1
N Wedley	1d	Default	0d

New England B	2½	Warboys C	1½
D Lane	1	M Misson	0
J Sadler	0	N Greenwood	1
S Walker	½	P Clough	½
M Tarabad	1	M Davies	0

Spalding	4	New England B	0
P Golimowski	1	D Lane	0
T Nottingham	1	S Wozniak	0
P Szutkowski	1	P O'Gorman	0
J Smith	1	M Tarabad	0

Team 550 Competition

NE Cavaliers	½	Spalding	3½
M Dunkley	½	P Golimowski	½
D Lane	0	P Szutkowski	1
S Walker	0	J Smith	1
I Garratt	0	R Coats	1

NE Patriots	1½	Godmanchester	2½
S Caraway	1	J Wright	0
S Wozniak	½	M English	½
J Parker	0	J Bygrave	1
P O'Gorman	0	A Ellul	1

Club Championship

Round 3			
J Sadler (1½)	P	P	P Spencer (2)
S Walker (1)	P	P	R Jones (1)

Round 4			
P Hanks (3)			S Caraway (3)
D Lane (2)			J Parker (2)
P Spencer (2+P)			M Dunkley (1½)
P Turp (2)			J Sadler (1½+P)
R Jones (1+P)			C Russell (1)
M Tarabad (1)			S Walker (1+P)
S Wozniak (1)			N Wedley (1)
N Foreman (0)			B Sadler (0)
I Garratt (0)			N Foreman (0) – Rd 1
N Foreman (0) – Rd 2			P O'Gorman(1)
Match night : 11th March      Deadline : 31st March Next draw : 1st April			

New England Club Ladder

White		Black	
J Parker	1	0	I Garratt
N Wedley	0	1	P Hanks
P Stevens	0	1	N Wedley
N Wedley	0	1	J Parker

Position	Change		Player	Record <small>25/02/15</small>
	Month	Overall		
1	-	+1	D Lane	1,1
2	-	-1	M Tarabad	0,1,1,1,1
3	-	+7	S Wozniak	1
4	+3	+5	P Hanks	1,1
5	-	+1	P O'Gorman	1,1,1,0,½
6	-	-1	J Parker	0,1,1,1
7	+1	-	N Foreman	0,0,0
8	-4	-5	N Wedley	0,0,0,1,0
9	-	-5	I Garratt	0,1,0,0,0,1,0
10	-	+1	S Walker	½
11	-	-3	P Stevens	0,0,0

## New England Grand Prix

Player	Champ	Ladder	League	Cup	Team 550	Total	TPR*
P Hanks	3	2	3½		1½	10	161
P O'Gorman	1	3½	0		3½	8	87
M Dunkley	1½		3½	½	2½	8	164
D Lane	2	2	2		2	8	110
M Tarabad	1	4	1		1	7	96
J Parker	2	3	1		1	7	94
S Caraway	3		2		1½	6½	159
P Turp	2		2	0	½	4½	156
J Sadler	1½		1		2	4½	116
S Wozniak	1	1			2	4	113
P Spencer	2		1		1	4	133
R Jones	1		1	0	1½	3½	126
S Walker	1	½	½	0	1	3	85
I Garratt	0	2				2	54
N Wedley	1	1			½	2½	97
C Russell	1		0		0	1	105
N Foreman	0	0				0	46
B Sadler	0					0	30
P Stevens		0				0	27

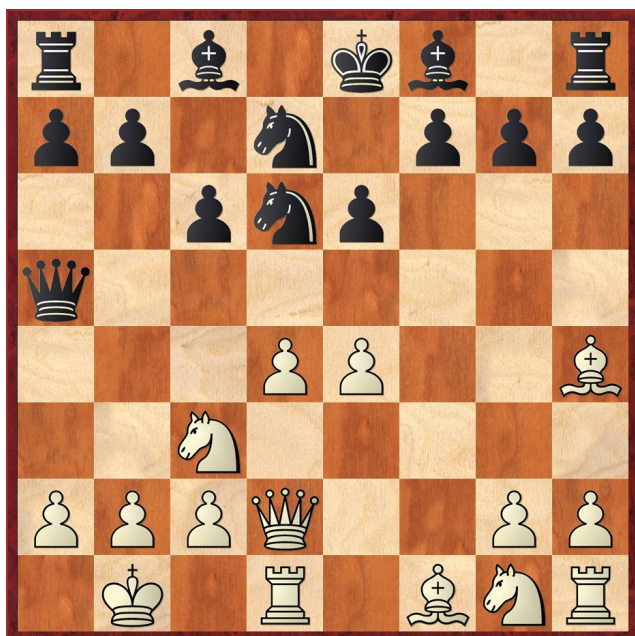
\* approximate & includes Summer Sprint

## Eye Opener

### S Mamedyarov v J Polgar

World Blitz 2014

1 d4 Nf6 2 Bg5 Ne4 3 Bh4 d5 4 f3 Nd6 5 Nc3 c6 6 e4 Qb6  
7 Qd2 e6 8 0-0-0 dxe4 9 fxe4 Qa5 10 Kb1 Nd7



The Eye Opener tries to bring you decisive tactics that crop up at a startlingly early stage. The elite, with their incredible depth of preparation, must surely be above such surprises...

11 Nd5 1-0

Black has no square on the a5-d8 diagonal on which to retreat with her queen and prevent Nc7#.

## Match of the Month

### C J Russell v S Caraway

New England Club Championship Rd 2, 14.01.2015

1 e4 d5

The Scandinavian Defence usually continues 2 exd5 when Black has a few tries for the initiative. The opening debate diverges from the expected path when Chris chooses to aim for the Advance Variation of the French Defence – sometimes called the Blockade Variation. The latter is unkind because it rarely leads to trench warfare. White lays claim to the open kingside i.e. very much in Chris's attacking style.

2 e5 e6  
3 d4 c5  
4 c3 Nc6  
5 Nf3 Qb6

The most aggressive move here is 6 Bd3 - the Milner-Barry Gambit - which was discussed in some detail in the July 2008 issue of **NEW ENGLANDER**. Black's success there seemed to confirm the view that its shelf-life was expiring and something of a relic from a more romantic era now that computers help thread your way through the tactical maze.

In 2011, however, the Serbian Grandmaster Miša Pap tried to rehabilitate the opening by publishing an article in *Informator* 113 which advocated 6 Bd3 cxd4 7 cxd4 Bd7 8 0-0 Nxd4 9 Nbd2 (instead of the orthodox 9 Nxd4 Qxd4 10 Nc3). White's threats are as yet extremely vague but Black has a confusing array of plausible options, 9 ... Ne7 amongst them. Let's store this position in memory for future reference.

6 Be2

This move was a favourite of the great Aron Nimzovich who used it to introduce his new strategic concept of "overprotection". Basically, this involves placing your own pieces to support a strongpoint (in this case, the pawn on e5) and this improves your co-ordination whilst disrupting that of your opponent.

Neither of the above options are seen regularly in current grandmaster practice. The most common is 6 a3, championed by Grischuk, and several games have continued 6 ... c4 when the "blockade" epithet would probably be deserved.

6 ... Bd7

The provocative 6 ... Nh6 is popular because relinquishing the bishop pair with 7 Bxh6 is preferable to 7 dxc5 Bxc5 8 0-0 Ng4 or 7 0-0 cxd4 8 cxd4 Nf5.

7 0-0 Nge7

Books on the opening give a number of possibilities at this point. 7 ... Nh6 transposes into the variation of the



previous note while 7 ... Rc8 8 dxc5 Bxc5 9 b4 Bf8 (the standard theory though the computer prefers 9 ... Be7) 10 Na3 gives a queenside initiative. Both 7... a5 and 7 ... cxd4 aim to prevent this flank activity.

**8 Nbd2**

Without Bf8xc5, now is surely the time for 8 dxc5 Qxc5 when the computer vacillates between

- 9 Be3 Qa5 10 Nbd2 Nf5 with a normal French game and
- 9 c4 dxc4 (9 ... d4 10 Nbd2 Nxe5 11 Nxe5 Qxe5 12 Nf3 Qc7 13 Qxd4) 10 Nbd2 Ng6 11 Nxc4 Ngxe5 12 Nfxe5 Nxe5 13 Be3 Qc7 14 Rc1 with the sort of open position that is more to Chris's taste.

8 Na3 is the book recommendation and my suggestion in the post-mortem analysis. After 8 ... cxd4 9 cxd4,

- 9 ... Ng6 10 Nc2 Be7 11 Bd3 0-0 12 Qe2 a5 13 h4 f6 appeared in Milos v Short, Buenos Aires 2001
- 9 ... Nf5 10 Nc2 (10 Nb5 a6 11 g4 axb5 12 gxf5 exf5 is a flight of fancy for the attack-minded, eh Chris?) 10 ... Be7 when 11 g4 is an option either now or later.

**8 ... cxd4**  
**9 Nb3**

9 Rb1 has hopes of 9 ... dxc3 10 bxc3 Qc7 11 c4 though 9 ... Ng6 is better and simplifies after 10 cxd4 Nxd4 11 Nxd4 Qxd4 12 Nf3 Qxd1 etc.

9 cxd4 would cut the losses and after 9 ... Nxd4, we reach the position in the "Pap Attack" mentioned before White's sixth move – apart from the alternative deployment of the light-squared bishop. With the bishop on d3, White gains tempi for development by harassing the black queen. The worst example would be 10 Nxd4 Qxd4 11 Nf3 Qg4?! 12 h3 Qh5 13 g4 Qxh3 14 Ng5 Qh4 15 Kg2 when Black has to work out how to deal with Rf1-h1. As the piece is actually on e2, Black can meet 10 Nxd4 Qxd4 11 Nf3 with 11 ... Qxd1 and there is no black queen to chase!

By a quirk of transposition, Chris has still managed to sacrifice the pawn but in a way that deprives himself of the normal compensation. Of course, that would never stop Chris from trying...

**9 ... dxc3**  
**10 Be3 Qc7**

10 ... cxb2 11 Bxb6 bxa1Q 12 Qxa1 axb6 leads to a level computer assessment but "unclear" might be closer to the mark. I was tempted by the chance but either fear or good sense triumphed!

**11 Bd4 Ng6**

Fritz prefers 11 ... cxb2 12 Bxb2 Ng6 13 Rc1 or 11 ... Nxd4 12 Qxd4 (12 Nfxd4 cxb2 13 Rb1 Nc6 14 Rxb2 Qxe5 with material and pressure) 12 ... Nf5 13 Qxc3.

**12 Bxc3 Ngxe5**  
**13 Nxe5 Nxe5**  
**14 Rc1 Nc6**  
**15 Bb5**

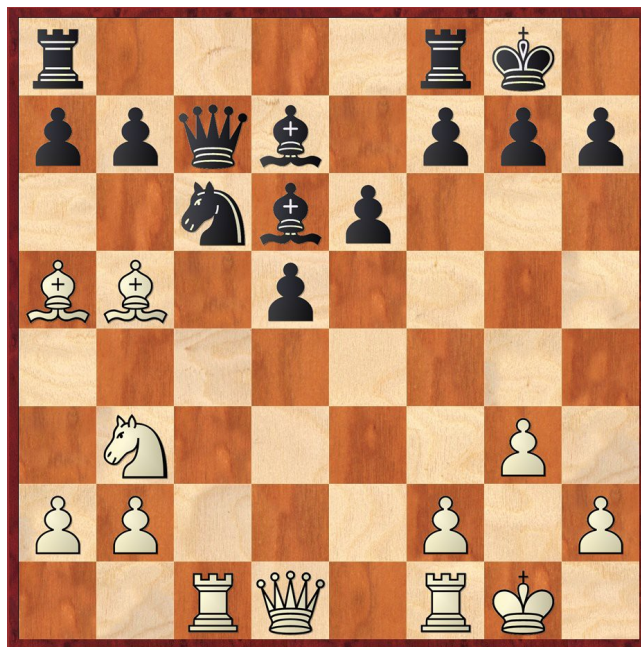
Kasparov was often contemptuous of the urge to rush after making a sacrifice. Here is a case in point because White does not need to hurry to land a blow and there is sound logic behind the peculiar 15 g3. It will prevent Bf8-d6 gaining a tempo against h2 and thus maintains the restricting attack on g7. It also limits Black's potential for sacrificing this pawn to occupy the g file. Consider the continuations

- 15 ... 0-0-0 16 Bb5 when White has a target on c6 as a prelude to a queenside attack and real compensation
- 15 ... Bd6 16 Bxg7 Rg8 17 Bc3 regaining one of the pawns with plenty of play for both sides.

**15 ... Bd6**  
**16 g3**

It is too late for 16 Bxg7 Bxh2+ 17 Kh1 Rg8 18 Bc3 (18 g3 Bxg3 19 fxg3 Qxg3) 18 ... Bf4/Rg6.

**16 ... 0-0**  
**17 Ba5**



**17 ... Qc8**

The text is solid. 17 ... b6 looks natural but dangerous. In fact, Black survives comfortably if you are prepared to do the analysis! 18 Nd4 bxa5 19 Bxc6 (19 Nxc6 Qb6 20 Ba4 (20 Qa4 Rab8 21 Ne7+ Bxe7 22 Bxd7 Qxb2 23 Qxa5) 20 ... Qxb2) 19 ... Bxc6 20 Rxc6 Qd7 21 Qd2 Rac8 22 Rfc1 Be5. Nevertheless, over the board, it is better to be safe than sorry.

**18 Nd4 Qe8**

18 ... e5 was probably equally playable.

**19 Qa4 Rc8 0-1**

19 ... a6 would also start to drive back the White pieces. A last try for complications in the game position might be 20 Bb4 Bxb4 21 Bxc6 (21 Nxc6 bxc6 22 Qxb4 cxb5) 21 ... bxc6 22 Qxb4 Rb8 23 Qc3 e5 when White is on the defensive and has nothing for his pawns.

*Sam Caraway*