

NEW ENGLANDER

Chess Club Update – March 2016

Chairman's Chatter

The popularity of our internal events seems to be waning. Please let me know what changes to our competition formats would encourage you to attend.

Paul Hanks

Diary Dates

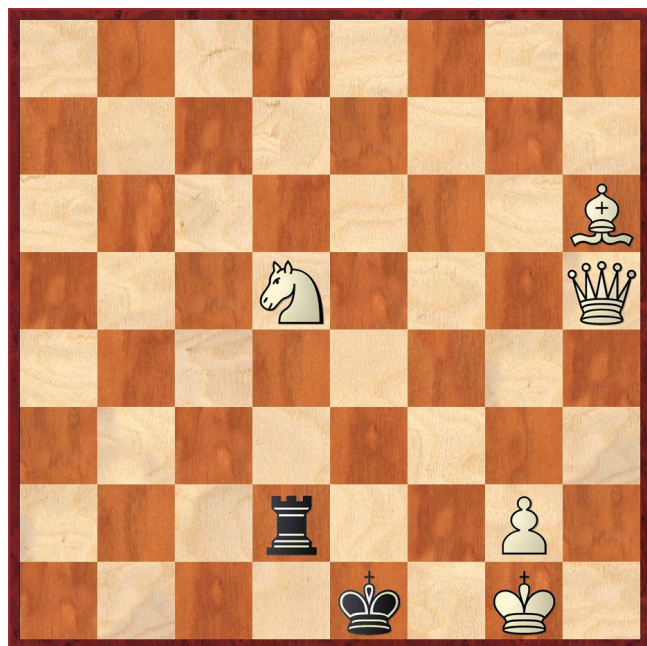
Organisation has started for the 2016 Cambridgeshire Rapidplay by its new director Julian Ray. The date proposed is 25th September in Whittlesford as usual and more details will appear on the county website.

16th March Club Championship round 4

30th March RAFA AGM when we lose the venue.

Puzzle Problem

White to play and mate in 2



Last Month's solution (Pribisil)

Position : 7n/p2N4/3p4/1Pnk4/3pR3/5Q2/5bK1/8

1 Qc3 Nxe4 2 Qb3# [1 ... dxc3/d3/Be3 2 Nf6#; 1 ... Kxe4 2 Qf3#; 1 ... Nxd7 2 Qc6#; 1 ... Bh4 2 Qxd4#]

Website to Watch

The next challenger for Carlsen's world champion title will be decided at the Candidates Tournament in Moscow from 11th to 28th March. Even the weakest participant has an ELO grade of 2751 which shows the quality of the field but let us hope this will not translate again into cautious play. To find out, follow the event at moscow2016.fide.com which directs you to worldchess.com for game viewing.

Window on the Web

The imaginatively named American website <http://www.chess.com> is packed with resources that should improve any player's knowledge of the game. It brings together in one place video lectures, puzzles, chess courses, articles, an openings/games explorer, the ability to play chess against human opponents or a computer and more. The content is suitable for all players, from beginner to master standard. The site boasts over 14 million members. It is possible to join at no cost, but then access to the features is severely restricted. There are 3 upgrades of subscription on a monthly or annual basis. The most expensive equates to about 20p a day and allows unlimited access to all the features with freedom from intrusive advertising.

The site is in the process of a revamp and for the time being members can access both the old and new interfaces and swap between them. The following remarks refer to the "new" site.

The *Learn* link takes you to the training features. There are hundreds of lectures in the video library, presented mainly by GMs and IMs on subjects such as knight v bishop, king hunts, Mikhail Tal's best endgames, club player's mistakes (a series), how to beat slow plans, the endgame secrets you must know and how to restrict and win.

Several of the videos are presented by the English "Ginger GM" Simon Williams. Some of those cover variations of the French Defence but one is about the Monkey's Bum Gambit. (I have no idea what that is and am reluctant to try it.)

Members can play each other at various time controls then have their games analysed by computer to identify any missed opportunities. They can also watch other member's games in progress and *Guess the Move*, with the watching member guessing correctly the most times being announced the winner.

This site has far more of interest so I'll be returning to it next time.

Ron Jones

Result Round-up

Cambridgeshire County Chess Leagues

Royston	4½	New England A	½
D Coleman	½	F Bowers	½
S Doci	1	P Hanks	0
A Stewart	1	M Dunkley	0
K Clark	1	P Turp	0
P Kemp	1	R Jones	0

St Neots	1½	New England A	3½
R Gompelman	1	R Taylor	0
P Brown	½	F Bowers	½
C Emery	0	P Hanks	1
R Palumbo	0	M Dunkley	1
F Rock	0	S Caraway	1

New England A	P	Peterborough B	P
Game postponed to 9 th March			

Spalding	1	New England B	3
P Golimowski	½	P Walker	½
J Smith	0	P Turp	1
T Bennett	0	R Jones	1
R Coats	½	D Lane	½

Peterborough C	½	New England B	3½
N Fisher	0	R Jones	1
J Conlon	0	D Lane	1
K Kuttikrishnan	½	S Walker	½
M Rawlinson	0	M Tarabad	1

Team 550 Competition

Spalding	4	NE Patriots	0
P Golimowski	1	C Russell	0
P Szutkowski	1	S Walker	0
J Smith	1	I Garratt	0
R Coats	1	N Foreman	0

Godmanchester	P	NE Patriots	P
Game postponed to 21 st March			

Club Championship

Round 2			
D Lane (1)	0	1	M Dunkley (1)
P Weinberger (1)	0	1	R Taylor (½)
I Garratt (0)	0	1	P Walker (0)

Round 3			
R Jones (2)	0	1	P Hanks (2)
M Dunkley (2)	1	0	P Weinberger (1)
R Taylor (1½)	P	P	D Lane (1)
M Tarabad (1)	1	0	S Wozniak (1½)
J Parker (1)	0	1	S Caraway (1)
F Bowers (1)	½	½	P Turp (1)
N Wedley (½)	1	0	S Walker (1)
C Russell (½)	1	0	I Garratt (0)
N Foreman (0)	½	½	P O'Gorman (0)

Round 3.5			
P Walker (0)	1	0	P O'Gorman (½)

Round 4			
P Walker (2)			R Taylor (1½+P)
S Caraway (2)			M Dunkley (3)
S Wozniak (1½)			R Jones (2)
D Lane (1+P)			N Wedley (1½)
M Tarabad (2)	0	1	F Bowers (1½)
P Turp (1½)			C Russell (1½)
P Weinberger (1)			J Parker (1)
S Walker (1)			N Foreman (½)
I Garratt (0)			P O'Gorman (½)

Match night : 16th March. Deadline : 31st March.
Next draw : 1st April

Round 4.5			
P Hanks (3)			P Walker (2+?)

New England Club Ladder

White		Black	
D Lane	1	0	N Foreman
R Jones	1	0	N Foreman
S Caraway	1	0	P O'Gorman

Position	Change		Player	Record @ 24/02/16
	Month	Overall		
1	+13	+12	S Caraway	1,1,1
2	-	+1	F Bowers	1,1,1,1,½,1
3	-2	+6	P O'Gorman	1,0,0,0,0,1,1,1,1,1,0
4	-1	+7	M Tarabad	1,0,1,0
5	-1	+7	P Hanks	1,1,½,1,1
6	-1	+5	N Wedley	1,1,1,1,½,0
7	-1	+7	R Jones	1,1,1
8	+5	+2	D Lane	0,0,½,0,1
9	-2	-7	N Foreman	0,0,0,0,0,0,0,0
10	-2	-3	P Turp	1
11	-2	-6	I Garratt	1,0,0,0
12	-2	-8	J Parker	0,0,0,1,1,0,0
13	-2	-7	P Cairns	0,0
14	-2	-6	P Weinberger	0,0,0,1

New England Grand Prix

Player	Champ	Ladder	League	Cup	550 Team	Total	TPR*
P Hanks	3	4½	6	½	½	14½	168
F Bowers	2½	5½	3	½	1½	13	168
R Jones	2	3	5		2	12	128
S Caraway	2	3	4		3	12	171
P Turp	1½	1	6		2	10½	154
D Lane	1	1½	4		3	9½	101
P O'Gorman	½	6			2	8½	89
M Tarabad	2	2	2½		1½	8	84
N Wedley	1½	4½				6	113
M Dunkley	3		2	0	½	5½	147
J Parker	1	2			1	4	90
C Russell	1½			½	1	3	112
R Taylor	1½		1½			3	160
P Walker	2		½			2½	177
S Walker	1		½		½	2	89
P Weinberger	1	1				2	77
S Wozniak	1½		½			2	107
I Garratt	0	1				1	47
N Foreman	½	0			0	½	49
P Cairns	0	0				0	16

* Tournament Performance Rating is approximate & includes Summer Sprint

Club Handicap : 10th February 2016

Player	1	2	3	4	5	6	7	Tot
1 P Hanks	X	1	1	1	1	1	1	6
2 D Lane	0	X	1	1	0	1	1	4
3 P Turp	0	0	X	1	0	1	1	3
4 N Foreman	0	0	0	X	1	0	1	2
5 M Tarabad	0	1	1	0	X	0	0	2
6 I Garratt	0	0	0	1	1	X	0	2
7 P O'Gorman	0	0	0	0	1	1	X	2

Club Rapidplay : 17th February 2016

Player	1	2	3	4	5	6	Tot
1 S Caraway	X	½	1	1	1	1	4½
2 P Hanks	½	X	½	1	1	1	4
3 P Walker	0	½	X	1	1	1	3½
4 M Tarabad	0	0	0	X	1	1	2
5 N Foreman	0	0	0	0	X	1	1
6 D Lane	0	0	0	0	0	X	0

Match of the Month

Ron Jones v Kevin Clark

Fenland Cup; New England B v Royston, 05.10.2011

1 **Nf3**

At the time I was trying out the King's Indian Attack before reverting to 1 d4.

1 ... **Nf6**
2 **g3** **b5**

Because White is employing an essentially slow development system, Black has the latitude to grab some space on the queenside by pushing further than the normal b7-b6. Kevin must have been ahead of his time because this opening was Maxime Vachier-Lagrave's surprise weapon against Carlsen at Shamkir 2015. He still lost but in *New in Chess* magazine, the annotations mention the solidity of the move. It has also been endorsed by the games of Karpov and Leko.

3 **Bg2** **Bb7**
4 **0-0**

Carlsen continued 4 Na3 which earned a !? but subsequently, let him either gain c4 as an outpost after b5-b4 or attack Black's expansion with c2-c4. What does he know?

4 ... **e6**
5 **d3** **c5**

Here we part company from Aronian v Ipatov, FIDE World Team Championship 2013 which continued rather surprisingly with 5 ... Be7 6 e4 d6 7 Nd4 a6 8 Nb3 c5?! 9 e5 when the exchanges are supposed to heavily favour White.

In both of these games, White had an option to manoeuvre a knight to a5 and challenge the fianchetto on b7. With his last move, Black makes this a forlorn hope.

6 **e4** **Nc6**
7 **Re1**

White's build-up strategy sometimes ends in a kingside attack after f2-f4. Perhaps the king's rook would then serve a purpose on f1 and I could have retained some flexibility by leaving it there at present and speeding up the development of my queenside pieces. After all, I have moved the same piece twice in the opening!

7 ... **Be7**
8 **Nbd2** **0-0**
9 **Nf1** **d5**
10 **e5** **Nd7**
11 **h4** **Qb6**

There is a rule-of-thumb that you can measure the relative state of development of the protagonists by the number of moves it takes to connect their rooks. Black has already succeeded but for White, it is still two moves away.

12 **N1h2** **Rae8**
13 **Bf4**

Over-protecting the e5 pawn.

13 ... f6
14 exf6

Increasing the scope of my bishop and rook. Houdini thinks this position is equal.

14 ... Bxf6
15 Bd6?!

Better was 15 c3, blocking the diagonal to b2 and keeping the c6 knight out of b4 and d4.

Another option was 15 Bh3. Even though Black has plenty of force ready for e6-e5, the thrust is not possible due to the pin against the knight on d7. Black has some difficulty protecting the backward pawn on e6 and if 15 ... Nd4, 16 c3 comes with tempo. It's just a matter of checking the complications following 15 ... Bxb2... It's OK... 16 Rb1 and Black has a lot en prise.

15 ... Rf7
16 Ng5 Bxg5
17 hxg5 Nd4
18 Bf4 Nf8

Sadly for Black, another pin, this time on the e file, means 18 ... e5 can be ignored.

19 Ng4 Ng6
20 Be3

Again, 20 c3 was better. I seemed to have a blind spot over that move.

20 ... Nf5
21 c3

Too late! I had allowed Black more space and his pieces were starting to mass against my king.

21 ... d4
22 Bf4 Bxg2
23 Kxg2

I now had to go into defensive mode and hope to weather the coming attack.

23 ... Qb7+

I was more afraid of 23 ... Nfh4+ when 24 gxh4 allowed Black's other knight to take my bishop on f4, probably followed by ... Qb7.

24 Kh3

The best choice. 24 Kh2 Nfh4 gives the attack extra impetus by allowing a fork on f3.

24 ... Nfh4

Already Black threatened mate next move. His pieces were far more active than mine. My a1 rook was yet to move. 25 gxh4 would be met by 25 ... Nxf4+ and there was no defence to 26 ... Qg2#.

25 Re4 Nxf4+

I was now running short of time. I had 7 minutes for the next 11 moves, Kevin had 16. Neither of us were being helped by the range of options at Black's disposal. 25 ... dxc3 26 bxc3 c4, 25 ... Ref8 and 25 ... e5 each unleash a forest of variations. Mostly, though, White's ability to occupy or exchange on e5 will maintain the balance.

26 Kxh4

If 26 gxf4, 26 ... Ng6 will eventually overwhelm the pawn on f4.

26 ... Nd5
27 cxd4

I took too long over this move, leaving myself with only 3 minutes.

27 ... cxd4
28 Qe2 Qe7
29 Re1

At last.

29 ... h6

Threatening 30 ... Qxg5+.

30 Re5 Rf5

Now I only had 2 minutes, Kevin had 12. Under such pressure, exchanging seemed the best policy.

31 Rxf5 exf5
32 Qxe7 Rxe7

It could have backfired. 32 ... Nxe7 would have forced me to find an answer to 33 ... fxg4 and 33 ... Ng6+ with a discovered attack on my rook. 33 Ne5 does not solve the problem (33 ... Ng6+ 34 Nxg6 Rxe1 and Black wins) and after 33 Nf6+ gxf6 34 gxf6 Ng6+, I just go down with a flourish.

33 Rxe7 Nxe7
34 Nh2

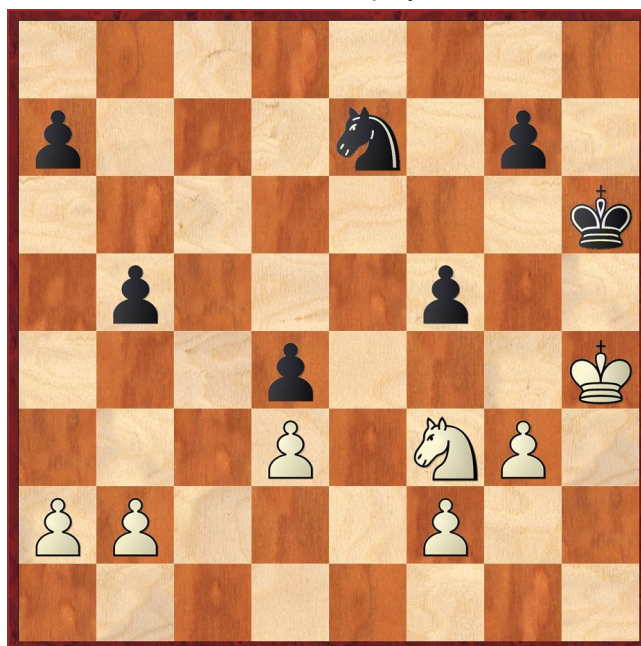
Obviously, e5 was a better post for the knight.

34 ... Kh7
35 gxh6

Now I had 1 minute left.

35 ... Kxh6
36 Nf3

Played with seconds to spare, with a sigh of relief having reached the time control, but 36 f4 was much better. My last move was played to stop 36 ... g5+ and to attack the d4 pawn. Black had 6 minutes left for his 36th move. What should he play?



36 ... Nc6?

Played almost immediately. Presumably, Kevin wanted to enter the quickplay finish with an advantage of 21 minutes to my 15. The move defends his pawn but we had both missed that 36 ... g5+ would win after 37 Kh3 g4+ or 37 Nxg5 Ng6+ 38 Kh3 Kxg4.

37 a3

Taking stock, I felt that Black's d pawn was dangerous and if he took my d pawn, I would have to be able to take his. My prospects of queening a pawn were poor. My king could only go backwards. Using his time to focus on a plan, I decided to keep my knight as active as possible, take as many of his pawns as I could and find a way to activate my king. Knight and pawn endings are tricky. The best I could hope for was a draw and I needed to be careful not to lose on time.

37 ... a5
38 g4 Kg6

I do not have a wide choice of playable moves! Thankfully, with my pawns on light squares and the knight covering the dark squares, Black does not have a quick entry route into my position for his king.

39 Kg3 Kf6
40 Kf4 fxg4
41 Kxg4 g5
42 Nxg5 Ne5+
43 Kh4

43 Kg3 was much better, defending the f2 pawn.

43 ... Nxd3

Temporarily blocking his now passed d pawn.

44 Nf3 Nxb2
45 Nxd4 Nd3

Black cannot save his queenside pawns e.g. 45 ... b4 46 axb4

- 46 ... a4 47 Nc2 with a bit of fun but essentially basic technique. Black does not have time to chase away the white knight and stop the pawns
- 46 ... axb4 47 Nc2 b3 (47 ... Nd3 48 Nxb4) 48 Nd4.

46 Nxb5 Nxf2
47 Kg3 Nd1
48 Kf4

3 minutes left on the clock.

48 ... Ke6 1/2 - 1/2

Both remaining pawns would soon be captured. A game with errors on both sides. I was more than happy with the draw against a much stronger opponent as the half point saved the team from a whitewash.

Ron Jones

Eye Opener

V Anand v L Aronian

Zurich Chess Challenge 2016

1 e4 e5 2 Nf3 Nc6 3 Bb5 Nf6 4 Nc3 Bd6

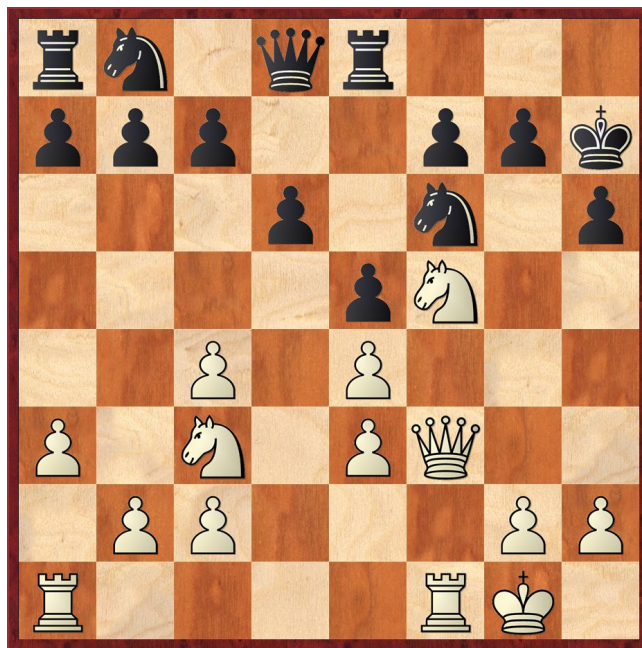
Classically, this is an ugly move that restricts Black's d pawn and hampers his development. These days, computers are less principled and if they cannot find fault, players follow their suggestions.

5 0-0 0-0 6 d3 Re8 7 a3 h6 8 Bc4 Bc5

Anyone for the Giuoco Piano?

9 Be3 Bxe3 10 fxe3 d6 11 Nh4 Be6 12 Nf5 Bxc4 13 dxc4 Kh7 14 Qf3 Nb8

White has a slight initiative but a poor pawn structure. The doubled pawns do, however, restrict the prospects of Black's knight on c6 and Aronian decides to route it to another square. Unfortunately, 14 ... Ne7 will not do because 15 Nxg7 when Black struggles to defend e.g. 15 ... Kxg7 16 Qxf6+ Kh7 17 Qxf7+ Kh8 18 Rf6 Ng8 19 Rg6 Re7 20 Rxg8+ Qxg8 21 Qxe7.



15 Nxe6

Anand has a history of playing similar sacrifices almost by instinct. Here it amazing that the white queen and rook can generate sufficient threats.

15 ... Kxh6

There is no sacrifice involved if 15 ... gxh6. White wins a pawn and emerges with an active position e.g. 16 Qxf6 Qxf6 17 Rxf6 Kg7 18 Raf1 Rf8 19 Nd5.

16 Qh3+ Kg6

After 16 ... Nh5, Fritz indicates 17 Rxf7 and 17 g4 are fine for White but it shows 17 Nd5 to be strongest. The c7 square is vulnerable because eventually the black queen must depart to defend her king – 17 ... c6 18 g4 g6 (18 ... Qg5 19 Rf5) 19 gxh5 Qg5+ (19 ... gxh5 20 Rf6+) 20 Kh1 Qxh5 21 Qxh5+ gxh5 22 Rf6+ Kg7 23 Rg1+ Kf8 24 Nc7.

17 Rf3 Nh5

Black has to defend against Rg3+.

18 Rf5 Nf6

Not 18 ... Rh8 19 Qg4+ Kh7 20 Qxh5+ Kg8 21 Qxf7+ Kh7 22 Rh5#.

19 Qh4 1-0