

# NEW ENGLANDER

## Chess Club Update – October 2016

### Chairman's Chatter

New York is not everyone's cup of tea. It is busy and the traffic is permanently gridlocked. On a recent visit, I found Central Park was not only an oasis of calm, it had a Chess and Checkers House. This is a kiosk where the public can borrow pieces and play either inside or out on about a dozen tables. If only the game had such support in this country!

*Paul Hanks*

### AGM Summary

The main points of the Annual General Meeting were :-

- the club made a surplus of £37-80 and had a closing balance of £193-25. Subscriptions can be maintained at £23p.a. (£18p.a. for OAPs) + ECF membership. Please pay fees to C Russell as soon as possible.
- past captains described a more successful past season. The website remains popular and would be improved with an updated honours board, addition of the rules for the internal events and a brief club history
- the Committee members were re-elected en bloc except for R Jones captaining both the B team and the Cavaliers in the Team 550 competition. M Tarabad will be captain for the Cavaliers in the Fenland Trophy knock-out
- club internal competitions will continue as last year. The closing date for the Ladder will be pushed back to 30<sup>th</sup> June. In future, the club AGM will be arranged in June to precede the Cambridgeshire AGM
- to accommodate the new Fischer time limit, the club depleted almost all its reserves with the purchase of seven digital clocks.

### Diary Dates

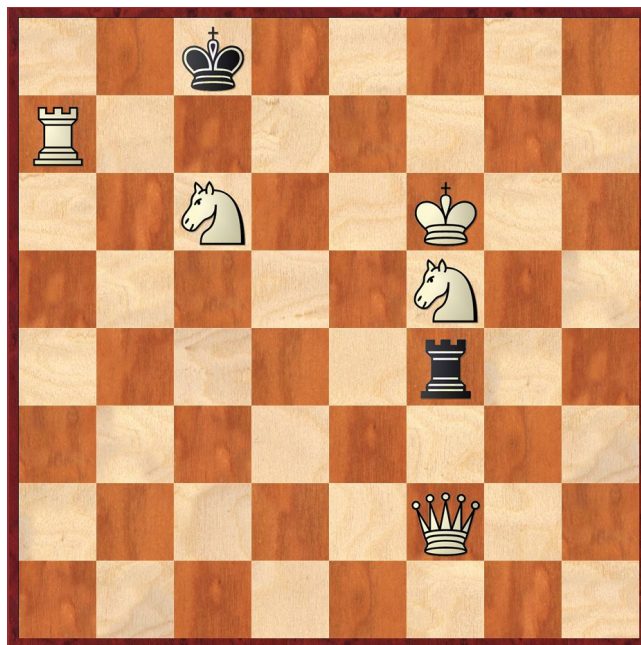
26-27<sup>th</sup> November Cambridgeshire County Championship at Peterborough Bridge Club, PE1 2PE is a 5 round Swiss tournament with a 9-30am start on each day. An entry form is available at [www.cambschess.co.uk](http://www.cambschess.co.uk).

### Website to Watch

From 1<sup>st</sup> to 9<sup>th</sup> October, the Isle of Man hosts a 9-round tournament and this year, the field is surprisingly strong. It includes the three top Americans, Caruana, Nakamura and So, England's No 1, Adams and many other grandmasters. Games will be shown on [www.iominternationalchess.com](http://www.iominternationalchess.com).

### Puzzle Problem

White to play and mate in 2



Last Month's solution (Gazimon 1969)

Position : 1B6/8/8/1R1P1R2/3k4/8/3K4

1 Bd6 Ke3 2 Rb3# [1 ... Kc3 2 Rf3#]

### Window on the Web

<http://www.chesscorner.com/index.html> is a site aimed at the improving player but since it was created by a chess enthusiast for chess enthusiasts, chess players of any level should find something on the site to interest them.

There are various links across the top of the home page. *Learn* takes you to tutorials beginning with those suitable for beginners who need the basics, followed by many more aimed at intermediate players. They cover such standard tactical themes as Removing the Defender, Overloading, Deflection and Decoying. Each theme is explained, followed by a few examples.

Algebraic and Forsyth notations are both explained. There is a selection of quotes of the elite players, such as: Chess is mental torture – Kasparov. There are two types of sacrifices: correct ones and mine – Tal. Discovered check is the dive-bomber of the chessboard – Fine. Every pawn is a potential queen – Mason. The sharp-eyed might notice that there is even a quote attributed to one Jan Tinman.

*Play* invites you to register and play online. *Games* presents collections of games to play through, but that section seems not to be working. *World Champions* is a list of historical world champions from Steinitz to

Kasparov. There are also links to Ecard sales (not chess-related) and books.

*Ron Jones*

## Result Round-up

### Cambridgeshire County Chess Leagues

Royston	3½	New England A	1½
A Stewart	1	R Ilett	0
L Varnham	1	F Bowers	0
K Clark	½	S Caraway	½
P Kemp	½	P Walker	½
D Hurricks	½	P Turp	½

### Team 550 Competition

NE Patriots	0	NE Cavaliers	4
S Caraway	0	P Walker	1
S Wozniak	0	R Jones	1
J Parker	0	D Lane	1
N Foreman	0	M Tarabad	1

Warboys	2½	NE Cavaliers	1½
R Mann	0	P Walker	1
B Duff	1	R Jones	0
M Onyons	½	D Lane	½
D Polehonski	1	M Tarabad	0

### Club Championship

Round 1			
P Weinberger (0)	0	1	R Ilett (0)
J Parker (0)	0	1	F Bowers (0)
S Caraway (0)	1	0	M Tarabad (0)
N Foreman (0)	1	0	G Dharmasena (0)
C Russell (0)	1	0	I Garratt (0)
S Walker (0)	½	½	S Wozniak (0)
R Jones (0)	½	½	N Wedley (0)
P O'Gorman (0)	P	P	P Turp (0)
P Walker (0)	P	P	D Lane (0)

Match night : 21<sup>st</sup> September. Deadline : 26<sup>th</sup> October  
Next draw : 1<sup>st</sup> November

Round 1.5			
I Garratt (0)			P Hanks (0)

### New England Club Ladder

White		Black	
F Bowers	½	½	R Ilett
P Hanks	1	0	I Garratt
N Foreman	0	1	J Parker

Position	Change		Player	Record @ 07/09/16
	Month	Overall		
1	-	-	F Bowers	½
2	-	-	R Ilett	½
3	-	-	P Hanks	1
4	-	-	I Garratt	0
5	-	-	J Parker	1
6	-	-	N Foreman	0

### New England Grand Prix

Player	Champ	Ladder	League	Cup	550 Team	Total	TPR*
P Walker			½		2	2½	202
F Bowers	1	½	0			1½	165
R Ilett	1	½	0			1½	164
S Caraway	1		½		0	1½	158
D Lane					1½	1½	126
R Jones	½				1	1½	126
P Hanks		1				1	176
C Russell	1					1	117
J Parker	0	1			0	1	82
M Tarabad	0				1	1	76
N Foreman	1	0			0	1	73
S Wozniak	½				0	½	92
P Turp			½			½	147
N Wedley	½					½	131
S Walker	½					½	108
P Weinberger	0					0	78
I Garratt	0	0				0	41
G Dharmasena	0					0	3
P O'Gorman							

\* Tournament Performance Rating is approximate

### Match of the Month

How should you proceed against an opponent who has a vastly different grade to your own? Here, Francis outranked me by 75 points but he had a similar problem though looking from the other end of the telescope. For the stronger player, there is only one acceptable outcome and according to conventional wisdom, this is achieved by calmly relying on a string of marginally better moves to give an eventual winning advantage in a risk-free manner.

**M Tarabad v F Bowers**

New England Club Championship Rd 4, 24.02.2016

1 e4 e5  
2 Nc3

The Vienna Game is out of favour these days because it fails to put Black under any pressure. An attempt to play a safe version of the King's Gambit comes to nothing after 2 ... Nf6 3 f4 d5 4 fxe5 Nxe4. On the few outings that have appeared in top level chess, White has continued with a kingside fianchetto e.g. 2 ... Nf6 3 g3 d5 (Lu Shanglei v Fedoseev, Pune 2014). Instead, Francis has confidence in his Philidor Defence.

2 ... d6  
3 Bc4 Nc6  
4 Nf3 g6  
5 d3 Na5

This is the alternative approach. Black purposely plays anti-positionally (after all, Francis would hardly recommend moving the same piece twice in the opening) and aims for an unbalanced game in which his superior tactical awareness should triumph. This philosophy is double-edged because it involves an inaccuracy that his opponent could exploit. I just have to find the right opportunity to strike!

6 b3 c6  
7 d4 Nxc4  
8 bxc4 Bg4  
9 dxe5

A better try might have been 9 Rb1 which comes with a threat to b7 and removes the rook from the dangerous long diagonal.

9 ... Bxf3

This exchange is a surprise. One of the compensating elements of Black's fifth move was gaining the bishop pair but Francis is happy to give it away. The early exchange of bishop for knight has been a feature of his games and with some success.

Obviously, 9 ... dxe5 allows 10 Qxd8+ Rxd8 11 Nxe5 Bg7 12 f4 but Black could avoid this variation with either 9 ... Bg7 due to 10 exd6 Bxc3+ or the riskier 9 ... Qa5 10 Bd2 0-0-0 which might end in the melée Black would like.

10 Qxf3 dxe5  
11 0-0

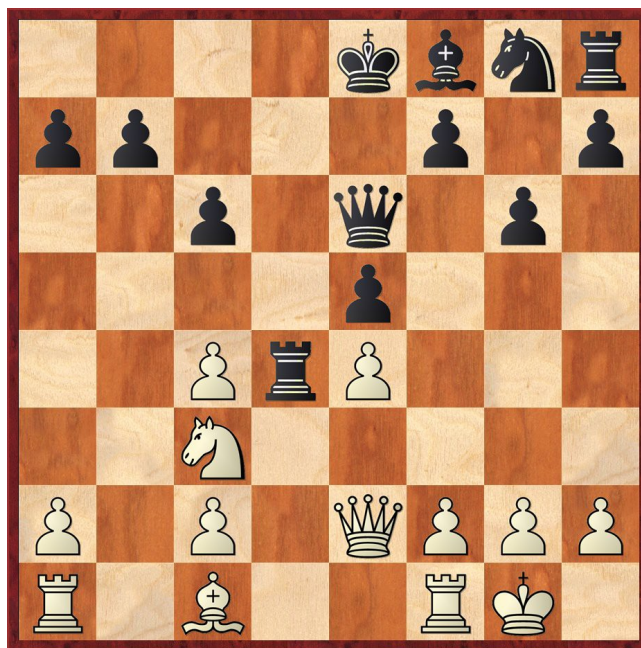
I have a considerable development advantage but Black has a sound pawn structure. Black needs to deploy his kingside pieces and ensure his uncastled king does not come under attack e.g. by swapping queens.

11 ... Qf6  
12 Qg3 Qe6  
13 Qd3

I underestimated how difficult it is to defend the pawn on c4 and overestimated the need to do so. In fact, after 13 Rd1, the pawn cannot be captured because 13 ... Qxc4 14 Qxe5+ Ne7 15 Qxh8.

13 ... Rd8

14 Qe2 Rd4  
15 Be3



The computer points out the tactical defence of c4 by a move such as 15 Rd1 because 15 ... Rxc4 allows 16 Nd5 (threatening both 17 Nc7+ and 17 Qxc4) 16 ... cxd5 17 exd5 when the queen cannot move to a square that protects the rook on c4 and prevents 18 Qxe5+ and 19 Qxh8. Sadly, this concept only occurred to me later in an inferior variation.

15 ... Rxc4  
16 Qd3 Bb4  
17 Rad1 Kf8

White is on the threshold of opening the position with Nc3-e2 and f2-f4 so the black king decides to quit the centre and head for sanctuary on the kingside. My sacrifice is now unsound.

18 Nd5 cxd5  
19 exd5 Qc8  
20 d6

Nevertheless, Fritz evaluates the position as almost equal despite White being a knight down. In a practical game with time pressure, the compensation possibly justifies the risk. Black has to decide how to counter 21 d7 because 21 ... Qd8 fails to 22 Qxc4.

20 ... e4

Returning the material immediately with 20 ... Bxd6 exposes the black king to 21 Qxd6+

- 21 ... Ke8 22 Qxe5+ (again!)
- 21 ... Kg7 22 Qxe5+ Nf6 (22 ... f6!) 23 Rd6 Qf5 24 Qxf5 gxf5 25 Bd4
- 21 ... Ne7 22 Bg5 Qc7 23 Bf6 Rg8 24 Qd8+ mating.

21 Qd5

After 21 Qb3 Nf6 22 d7 Nxd7 23 Rxd7 Qxd7 24 Qxc4, White is temporarily a pawn down but Black's positional problems remain. Holding the bishop on b4 and the pawn on e4 is difficult due to 24 ... Qe7 25 Bh6+ Ke8 26 Rd1 with a massive attack.

21 ... Nf6  
22 Qe5

White could push the pawn 22 d7 Nxd5 23 dxc8Q+ Rxc8 24 Rxd5 when the computer expects a draw by repetition after 24 ... Be7 25 Rd7 Bf6 26 Bh6+ Bg7 27 Bf4 Bf6 28 Bh6+.

22 ... Qe6  
23 Bh6+ Ke8

Francis chooses correctly. I regain my material if 23 ... Kg8 24 Qxe6 fxe6 25 d7 Kf7 (25 ... Be7 26 d8Q+ Bxd8 27 Rxd8+ Kf7 28 Rxh8) 26 d8Q Rxd8 27 Rxd8.

24 Qb5+

Black is slowly developing and gaining the upper hand. I could have tried for equality with 24 Qxe6+ fxe6 25 Bg7 Rg8 26 Bxf6 Kd7.

24 ... Nd7  
25 Qxb7

25 Rd5 looks like a splendid resource with Qxc4 and Re5 threatened but 25 ... Rc6 defends.

25 ... Bxd6  
26 Rd2 Qe5  
27 g3 g5  
28 f4

This was probably my chance! Francis has scented the initiative on the kingside but I could cash in on my active queen with 28 Bg7 Qxg7 29 Rxd6 with nasty intentions on d7 e.g. 29 ... f6 or Nb6 30 Rfd1.

28 ... exf3  
29 Qxf3 Bc5+

Fritz likes 29 ... f5 with an attack.

30 Kg2 Kd8  
31 Qa8+

The pendulum swings again. White had two options - either direct play with 31 Rxd7+ Kxd7 32 Qxf7+ Kc6 33 Qxc4 or more gradually, 31 Rfd1 Rd4 (31 ... Bd4 32 c3 Rxc3 33 Qg4) 32 Rxd4 Bxd4 33 Qg4. Not a position for time trouble!

31 ... Kc7  
32 Qf3

After 32 Rxd7+ Kxd7 33 Qb7+, Black has to be careful due to the hanging rook on c4 i.e.

- 33 ... Qc7 34 Qd5+
- 33 ... Ke6 34 Qxf7+ Kd6 35 Rf6+
- 33 ... Kd6 34 Qa6+ Kd5 35 Qb7+ Kd6 (35 ... Kd4 36 Rd1+ Kc3 (36 ... Ke3 37 Qf3#) 37 Qb3#) 36 Qa6+ with perpetual check
- 33 ... Kd8 34 Bxg5+ Qxg5 35 Qb8+ Kd7 (35 ... Ke7 36 Qc7+ Ke8 (36 ... Ke6 37 Re1+ Kf6 38 Rf1+ Ke6 draws) 37 Qxf7+) 36 Qb5+.

32 ... g4  
33 Qxf7

One last gasp! 33 Rxd7+ Kxd7 34 Qxf7+. Now, the fight is over.

33 ... Qe4+  
34 Rf3 Qxf3+  
35 Qxf3 gxf3+

36 Kxf3 Ne5+  
37 Kg2 Ng4  
38 h3 Nxh6 0-1

Much of the foregoing analysis was generated by computer and is too deep for club players such as myself but it is nice to dream of what might have been...

*Mahmoud Tarabai*

## Eye Opener

von Holzhausen v Tarrasch  
Frankfurt 1912

1 e4 e5  
2 Nf3 Nc6  
3 Bc4 Nf6  
4 d4 exd4  
5 0-0

Seen this before? It appeared in the Match of the Month for September! This time, Black tries an unusual reply to the Max Lange Attack.

5 ... d6  
6 Nxd4 Be7  
7 Nc3 0-0  
8 h3 Re8  
9 Re1 Nd7

Both sides have developed naturally but Black's last move looks suspect. It is duly punished.



10 Bxf7+ Kxf7  
11 Ne6 1-0

Either the black queen is lost or 11 ... Kxe6 12 Qd5+ Kf6 13 Qf5#