

# NEW ENGLANDER

## Chess Club Update – July 2017

### Chairman's Chatter

Congratulations to Cavaliers! By virtue of their lower aggregate grade, Cavaliers beat Cambridge on the tie-break after a 2-2 draw in the Team 550 final to give New England the title for the first time. We have to thank captain Ron Jones for taking this possibility into consideration when selecting the team!

We now enter the quieter summer season with a small league for the devotees of formal chess and more light-heartedly, Masterclass tuition sessions.

*Paul Hanks*

### Diary Dates

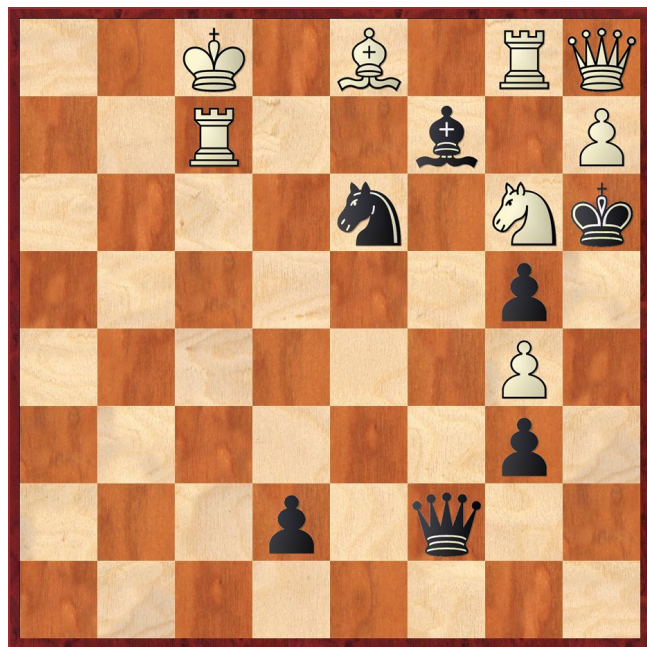
12<sup>th</sup> & 19<sup>th</sup> July Summer League

24<sup>th</sup> September Cambridgeshire Rapidplay at St Faith's School, Cambridge. Entry forms from the CCCA website.

18-19<sup>th</sup> November Provisional date for the County Championship. More details will be available from F Bowers.

### Puzzle Problem

White to play and mate in 2



This is the starter problem for the Winton British Solving Championship. If you wish to enter, please email your solution to [winton@theproblemist.org](mailto:winton@theproblemist.org) by 31<sup>st</sup> July.

Last Month's solution

Position : 8/1P6/k2N1Q2/P7/2n5/2K5/8/8

1 Qd4 Kxa5 2 Qa7# [1 ... Nxa5 2 b8N#; 1 ... N other 2 Qxb6#]

### Website to Watch

The third FIDE Grand Prix event is scheduled for 5-16<sup>th</sup> July in Paris. Watching via the official website [worldchess.com](http://worldchess.com) has carried a fee in the past so the general viewer [www.chessbomb.com](http://www.chessbomb.com) might be a handy bookmark.

Two smaller tournaments during the month are Dortmund (15<sup>th</sup>-23<sup>rd</sup> July on [www.sparkassen-chess-meeting.de](http://www.sparkassen-chess-meeting.de)) and Biel (24<sup>th</sup> July to 2<sup>nd</sup> August on [beta.bielchessfestival.ch](http://beta.bielchessfestival.ch)).

### AGM Summary

The Club AGM was held on 7<sup>th</sup> June 2017. The main points from lengthy discussions were :-

- Club successes included winning the CCCA Team 550 competition and competitive third place finishes in the Leagues. Ray Ilett marked his debut by winning the Club Championship, Ladder and Grand Prix
- club funds were reduced by the purchase of digital clocks to comply with the CCCA's incremental time limits in league matches
- the club's entries into the CCCA competitions for 2017-18 remain as the previous year
- the Club Committee was re-elected en bloc
- payment of ECF membership can be made online or via the club secretary for £16 (bronze level for adults)
- in addition to ECF membership, subscriptions for next year are £28 at the standard rate and £23 for OAP members. This includes a contribution to pay for passenger journeys to away matches
- due to failing support, internal events such as the Problem Night, Lightning and Handicap will only be run if there is a surplus of free club evenings
- the successful Club Championship will be expanded to at least 8 rounds and the Ladder Competition will continue unchanged.

At the Cambridgeshire County Chess Association, team entries had not been finalised but it was expected that Peterborough B would be relegated to form two divisions of six teams. Otherwise, the competitions will remain the unchanged including the fees.

Please note that a vacancy exists for the captain of the Under-120 County team. Please let N Wedley know if you are interested in this position.

## Result Round-up

### Team 550 Competition Final

Cambridge Winner - South	2	NE Cavaliers Winner - North	2
S Pride	0	R Ilett	1
C Hughes	0	F Bowers	1
G de Block	1	M Ingram	0
D Cattermole	1	J Parker	0

### Cambridgeshire County Chess Leagues

Division 1	P	W	D	L	Points	
					Game	Match
Royston	12	10	0	2	42½	20
Warboys A	12	7	2	3	34	16
New England A	12	6	2	4	30	14
Cambridge Scholars	11	5	3	3	27½	13
Peterborough A	12	4	1	7	29½	9
St Neots	12	2	4	6	26	8
Peterborough B	11	1	0	10	15½	2

Division 2	P	W	D	L	Points	
					Game	Match
Warboys C	8	5	2	1	20½	12
Spalding	8	4	2	2	18	10
New England B	8	3	3	2	17½	9
Warboys B	8	3	0	5	14	6
St Neots B	8	1	1	6	10	3

### Cambridgeshire Jamboree : 17<sup>th</sup> May 2017

Team	1	2	3	Total
1 Royston	3½	2½	2½	8½
2 Warboys A	3	3½	1½	8
3 Linton	2	3	2½	7½
4= St Neots	2	2	3	7
New England A	2	2	3	7
6 Peterborough	2	2	2½	6½
7 Warboys B	1	2	2	5
8 Godmanchester	2½	0	0	2½
9 New England B	0	1	1	2

### Summer League

Player	FB	IG	NF	Total
F Bowers	X			
I Garratt		X	1	1
N Foreman		0	X	0

### Club Championship

Round 6			
G Dharmasena (3)	1	0	P Weinberger (3)

	Player	Round						Total
		1	2	3	4	5	6	
1	R Ilett	1	1	½	1	1	1	5½
2	S Caraway	1	½	½	1	1	½	4½
3=	P Walker	1	0	½	1	1	½	4
	F Bowers	1	½	½	1	1	0	4
	G Dharmasena	0	1	1	1	0	1	4
6=	P Turp	1	1	½	½	0	½	3½
	C Russell	1	½	1	0	0	1	3½
	M Ingram	1	1	0	0	½	1	3½
	R Jones	½	½	½	1	½	½	3½
	P Hanks	1	½	1	0	0	1	3½
11=	J Parker	0	1	0	1	1	0	3
	P Weinberger	0	1	0	1	1	0	3
	M Tarabad	0	0	1	1	1d	-	3
14	S Wozniak	½	½	1	½	0	0	2½
15	D Lane	0	0	1	0	-	1	2
16=	N Wedley	½	1	0	0	0	0	1½
	S Walker	½	0	0	0	1	0	1½
18=	P O'Gorman	0	0	0	0	-	1	1
	N Foreman	1	0	0	0	-	-	1
20	I Garratt	0	0	0	0	0	0	0

### Mini-Lightning : 24<sup>th</sup> May 2017

	Player	1	2	3	4	5	6	Tot
1	F Bowers	X	1	1	1	1	1	5
2	S Caraway	0	X	1	1	1	1	4
3=	P Weinberger	0	0	X	0	1	1	2
	C Russell	0	0	1	X	1	0	2
5=	M Tarabad	0	0	0	0	X	1	1
	I Garratt	0	0	0	1	0	X	1

### Rapidplay : 14<sup>th</sup> June 2017

	Player	1	2	3	4	Tot
	F Bowers	X	1	1	1	3
	P Hanks	0	X	1	1	2
	I Garratt	0	0	X	1	1
	C Russell	0	0	0	X	0

## New England Club Ladder

Position	Change		Player	Record @ 31/05/17
	Mon	O'all		
1	-	+1	R Ilett	½,1,0,1,½,1,½,1
2	+1	+3	J Parker	1,0,½,0,1,1,1,½
3	-1	+9	D Lane	1,1,½,½,1
4	+1	+10	S Walker	0,1,½,1,0,1,1
5	-1	-4	F Bowers	½,½,1,1,0
6	-	+5	P O'Gorman	½,0,1,0,0,½,0,0,1,0,0,0
7	+1	-	N Wedley	1,0,1,1,½,½,1,½,1,1
8	-1	+7	M Ingram	0,1,½
9	-	-	M Tarabad	1,1,1,0,1,0,1,0,1,0,0,½,0
10	+2	-2	P Weinberger	1,1,0,1,1,1,0,0,0,1
11	-1	-8	P Hanks	1,1,½,1
12	-1	+4	S Caraway	1,½
13	-	-	P Walker	½,½,½,0
14	-	-10	I Garratt	0,0,0,1,0,0,0,0,0,0
15	-	-9	N Foreman	0,0,0,0,0,0,0
16	-	-6	R Jones	1,0

## New England Grand Prix

Player	Champ	Ladder	League	Cup	T550	Total	TPR*
R Ilett	5½	5½	6	½	2	19½	180
S Caraway	4½	1½	9	½	3	18½	159
P Walker	4	1½	9	0	3½	18	163
M Tarabad	2	6½	4	½	3	15	93
F Bowers	4	3	4	½	3	14½	159
D Lane	2	4	4	0	4½	14½	120
P Hanks	3½	3½	4½	½	½	12½	150
P Weinberger	3	6			2½	11½	99
J Parker	3	5	½		2	10½	108
R Jones	3½	1	3		2	9½	120
N Wedley	1½	6½			1	9	106
P Turp	3½		3½		1	8	132
S Walker	1½	4½	1		1	8	101
C Russell	3½			1	3	7½	129
M Ingram	3½	1½			2	7	110
P O'Gorman	1	3			1	5	70
G Dharmasena	4					4	120
S Wozniak	2½			0	0	2½	98
I Garratt	0	1			½	1½	47
N Foreman	1	0			0	1	48

\* Tournament Performance Rating is approximate

## Match of the Month

**C Hughes v F Bowers**  
Team 550 Final, 31.05.2017

**1 e4 e5**  
**2 Nf3 d6**

Philidor (1726-95) was a French player famous for his saying "The pawns are the soul of chess". According to Wikipedia, he played a game at the Café de la Régence with a 'friend from New England' – Benjamin Franklin! In the opening named after him, you get a solid foundation but you open up the a2-g8 diagonal for White's bishop.

Chinese grandmaster Bu Xiangzhi commented on a game in his national league "The unconventional Philidor Defence. I have not achieved good results against higher level opponents with it. So I tend to use this type of opening against lower-rated players to avoid opening preparations" (Informator 131). As it is a mainstay of my repertoire, perhaps I shall have to change my choice when I come to meet the likes of Magnus Carlsen. But then, would he have prepared for me?

**3 d4**

This can lead to the Scotch Opening and Danish Gambit.

**3 ... exd4**

I take the pawn as I do not want to exchange queens, lose a pawn and upset my king.

The Hanham Variation 3 ... Nd7 is popular here and by transposition 4 Nc3 Be7 5 Bc4 Ngf6 reaches the position that occurred in Caruana v Carlsen, Biel 2011. Maybe Magnus has studied the opening and is lying in wait for me!

**4 Nxd4**

Taking with the queen is best which I play for White.

**4 ... g6**

Larsen's variation. The Danish legend published a pamphlet "Why not the Philidor?" (Chess Digest Texas 1971) and it has proved to be a bargain. Over the years, I have wins with the opening against 3 grandmasters (Turner, Adams, Jones) and a draw against Pert at various stages of my chess career (and theirs!).

**5 Bc4 Bg7**

I am conceding a slight space advantage to White and that extra mobility will give my opponent a small lead in development. My position is, however, compact and will be robust provided I do not open up the position too quickly.

**6 0-0 Nc6**  
**7 Be3**

7 Nxc6 bxc6 damages Black's pawn structure but the computer (which normally likes such moves) hardly favours this over the text.

**7 ... Nf6**  
**8 Nc3 0-0**  
**9 h3**

White stops my knight going to g4 and restricts my bishop but gives me a breather to get my attack going.

9	...	Re8
10	Nxc6	bx6
11	Qd3	Be6

11 ... Nxe4 is a standard tactic and must be examined. After 12 Nxe4 d5 13 Rad1 Qe7 14 Nc3 dxc4 15 Qxc4, the doubled, isolated c pawns are not very attractive even if 15 ... Rb8 is supposed to give enough counterplay because 16 Qxc6 (16 b3 Rb4) 16 ... Rxb2 17 Nd5 Qe4 will be tricky for White due to threats of Bc8-b7 and Rb2xc2. Instead of defence, White would need to foresee 18 Bd4 Bxd4 19 Rxd4 Qxd4 20 Nf6+.

12	Rad1	Qe7
----	------	-----

I have completed my development and am now attacking indirectly the e pawn three times.

13	f3
----	----

His bishop on e3 has become a target which allows me to play the equalising move

13	...	d5
14	Bb3	Rad8

The immediate exchanging sequence 14 ... dxe4 15 Nxe4 Nxe4 16 Qxe4 Bxb3 17 axb3 Qxe4 18 fxe4 Rxe4 wins a pawn but will it be sufficient in the resulting simplified position?

15	Qa6
----	-----

Don't panic! Although two pawns are attacked, he cannot take them both in one move and his queen is offside.

16	...	dxe4
16	Nxe4	

16 Qxc6 or 16 Rxd8 Qxd8 17 Qxc6 Bxb3 18 axb3 exf3 19 Qxf3 lead to approximate equality.

16	...	Rxd1
17	Rxd1	Nxe4
18	fxe4	Bxb3
19	cx3	Qxe4

Now I have an extra pawn (unless White invests a tempo by capturing on a7) and good piece activity. I need to win this game for the team

20	Bf2	Qc2
----	-----	-----

If I play 20 ... Bxb2, 21 Re1 and I am losing.

21	Re1
----	-----

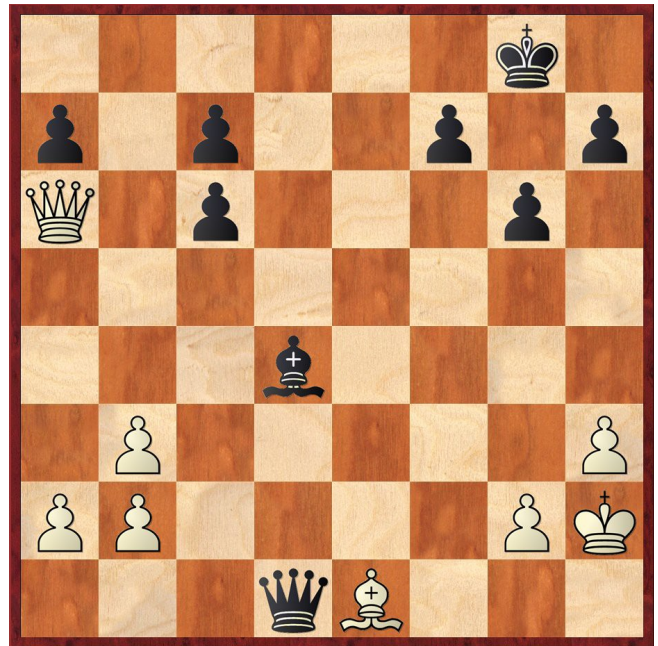
If I take the rook, it looks drawish but I am still a pawn up. Sadly for White, it transpires that exchanging the attacking pieces in this case does hardly weaken the assault because the white queen is not helping the defence.

21	...	Rxe1+
22	Bxe1	Bd4+

Let the fun begin. I have control of the dark squares and that is all I need! It just takes a little calculation to find the right move order to put White into difficulties.

23	Kh2	Qd1
----	-----	-----

Fritz suggests I take the pawn on b2 first which I should have done.



24	Bc3
----	-----

White needs to interject 24 Qc8+ Kg7 before 25 Bc3. The difference is apparent only 5 moves later...

24	...	Qg1+
25	Kg3	Qf2+
26	Kh2	

26 Kg4 h5+ 27 Kg5 Be3# would be worthy of a solution on Problem Night!

26	...	Qf4+
27	Kh1	Qc1+
28	Kh2	Bg1+

With the white queen on c8 and the black king on g7 (see White's 24<sup>th</sup> move), this move would be impossible – the bishop would be pinned!

29	Kg3
----	-----

It is now getting quite simple 29 Kh1 Bf2+ 30 Kh2 Qg1#

29	...	Qe3+
30	Kg4	

30 Kh4 Qf4+ 31 g4 Bf2#

30	...	h5+
31	Kh4	Bf2+ 0-1

White resigns before I can play 32 ... Qf4#.

*Francis Bowers*