

NEW ENGLANDER

Chess Club Update – October 2017

Chairman's Chatter

Remember the Ladder Competition! We started the season with two rounds of the Club Championship and given that September is the tail end of the summer holiday season and there were some late entrants after the break, this event started well. Alongside the league matches, we can play formally in the Ladder and I hope we can ramp up the number of games next month.

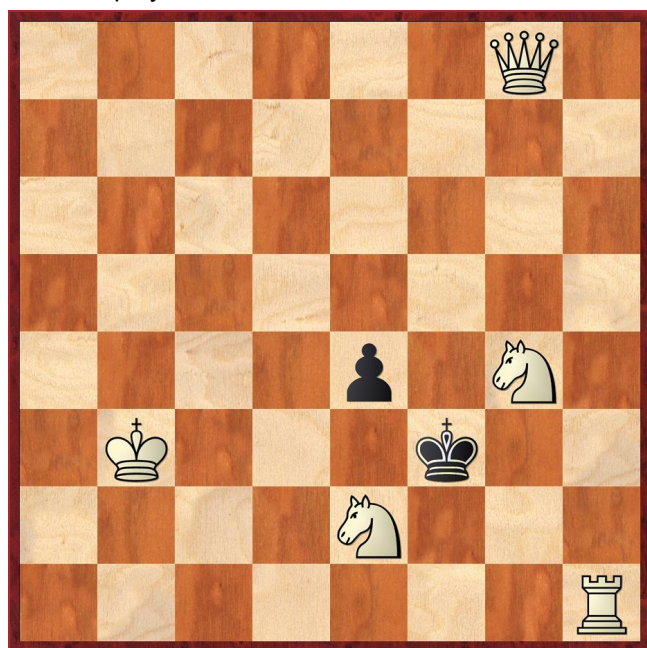
Paul Hanks

Diary Dates

18-19th November Cambridgeshire Individual Championships at Peterborough Bridge Club, Lincoln Road with Open, U140 and Junior sections. Entry forms are available from F Bowers.

Puzzle Problem

White to play and mate in 2



Last Month's solution

Position : b1k1K3/8/1nPb4/8/8/8/2Q5

1 Qh1 Bxc6+ 2 Qxc6# [1 ... Bb7 2 cxb7#; 1 ... Nd7 2 cxd7#; 1 ... N other 2 Qh3#]

Website to Watch

The European Club Cup will take place in Antalya, Turkey from 8th to 14th October. The website euroclubcup2017.tsf.org.tr will give the pairings, results and standings but may not carry live games so you may need to follow it on a general viewer such as <https://www.chessbomb.com/arena/>.

Result Round-up

Club Championship

Round 1			
N Wedley	0	1	E Serban
R Jones	1	0	J Parker
S Wozniak	0	1	F Bowers
D Lane	1	0	S Walker
I Garratt	0	1	P O'Gorman
R Ilett	1	0	C Russell
M Ingram	0	1	P Walker
P Turp	P	P	P Weinberger
M Tarabad	P	P	P Hanks
Deadline : 31 st October Next draw : 1 st November			

Round 2			
F Bowers (1)	0	1	R Ilett (1)
P O'Gorman (1)	P	P	D Lane (1)
S Walker (0)	P	P	R Jones (1)
P Walker (1)	1	0	N Wedley (0)
J Parker (0)	1	0	I Garratt (0)
C Russell (0)	½	½	S Wozniak (0)
E Serban (1)	P	P	M Tarabad (P)
M Ingram (0)	P	P	P Weinberger (P)
P Hanks (P)	P	P	P Turp (P)
Deadline : 31 st October Next draw : 1 st November			

Cambridgeshire County Chess Leagues

New England A	2	Royston	3
R Ilett	½	L Varnam	½
P Walker	0	D Coleman	1
F Bowers	0	K Clark	1
P Hanks	½	P Kemp	½
E Serban	1	M Pinner	0

Warboys C	3½	New England B	½
N Greenwood	½	F Bowers	½
J Beck	1	R Jones	0
M Davies	1	D Lane	0
P Wells	1	M Tarabad	0

Fenland Trophy

Peterborough	3	New England A	1
I Bin-Suhayl	½	R Ilett	½
C Tandy	1	P Walker	0
S Caraway	½	P Hanks	½
N Fisher	1	J Parker	0

New England Club Ladder

White		Black	
J Parker	0	1	F Bowers
N Wedley	½	½	J Parker

Position	Change		Player	Record @ 27/09/17
	Month	Overall		
1	-	-	F Bowers	1
2	+1	+1	N Wedley	½
3	-1	-1	J Parker	0,½

New England Grand Prix

Player	Champ	Ladder	League	Cup	550 Team	Total	TPR*
R Ilett	2		½	½		3	194
F Bowers	1	1	½			2½	149
P Walker	2		0	0		2	155
E Serban	1		1			2	193
J Parker	1	½		0		1½	92
D Lane	1		0			1	104
R Jones	1		0			1	122
P O'Gorman	1					1	97
P Hanks		½		½		1	173
C Russell	½					½	105
S Wozniak	½					½	105
N Wedley	0	½				½	97
M Ingram	0					0	91
S Walker	0					0	68
M Tarabad			0			0	67
I Garratt	0					0	34
P Turp						0	-
P Weinberger						0	-

* Tournament Performance Rating is approximate and excludes Summer League

Match of the Month

F Bowers v R Ilett

New England Club Championship Rd 2, 13.09.2017

1 Nf3

It is not often that annotated games pass comment on White's first move, particularly when it is as common and flexible as this. A favourite of Kramnik, 1 Nf3 does declare White's hand somewhat if the Queen's Indian or Dutch Defences are in Black's repertoire. In many positions arising from these openings, an early objective for Black is to establish a knight on e4 supported by a queenside fianchetto and f7-f5. It is often handy for White to have f2-f3 to repel the incursion but 1 Nf3 already makes this difficult.

1 ... Nf6
2 d4 b6
3 c4 e6
4 Nc3

4 g3 is a very popular alternative.

4 ... Bb7

Black is also adopting a "classical" move order. The development of the light-squared bishop can be delayed to see if White intends to divert its counterpart with a fianchetto on the kingside (5 g3). Black would then have the option of 5 ... Ba6 to put pressure on c4 without loss of tempo.

5 Bf4

This move is quite well regarded by Fritz but rarely gets an outing in international chess. It sometimes occurs on move 4 which leaves Nb1-d2 as a response to Bf8-b4.

5 ... Bb4
6 a3 Bxc3+
7 bxc3 Ne4
8 Qc2 f5

As noted earlier, this set-up is popular and can typically arise from a number of defences. Black's plan is to control the long a8-h1 diagonal, particularly e4 where an exchange of pawns would open the f file for the rook(s). Black also intends to push in centre with d7-d6 and e6-e5. The reason the strategy is so favoured is that Black has a clear plan and a solid position which usually remains the case whether or not there is a white bishop on f4.

9 h4

This may seem strange when White has yet to castle or start to deploy his remaining kingside pieces. The pawn thrust is a deterrent because after 9 e3, 9 ... g5 could follow.

9 ... 0-0
10 e3 d6
11 Bd3 Qe8

A fairly routine move that turns out to be remarkably versatile. In the first place, it threatens to bring the black queen out on the e8-h5 diagonal where she can join an attack if White chooses 12 0-0.

12 0-0-0

Instead, Francis decides to place his king behind the shattered queenside pawns. It is very enterprising but for me, it is too risky. The computer agrees though its evaluation of White's best plan is not stable. It frequently changes its recommendations among a range of similar continuations. 12 0-0 is safe but another option is to expand on the kingside with 12 h5 because 12 ... Nd7 13 h6 g6 14 0-0 will give Black weak dark squares and so 12 ... h6 is suggested.

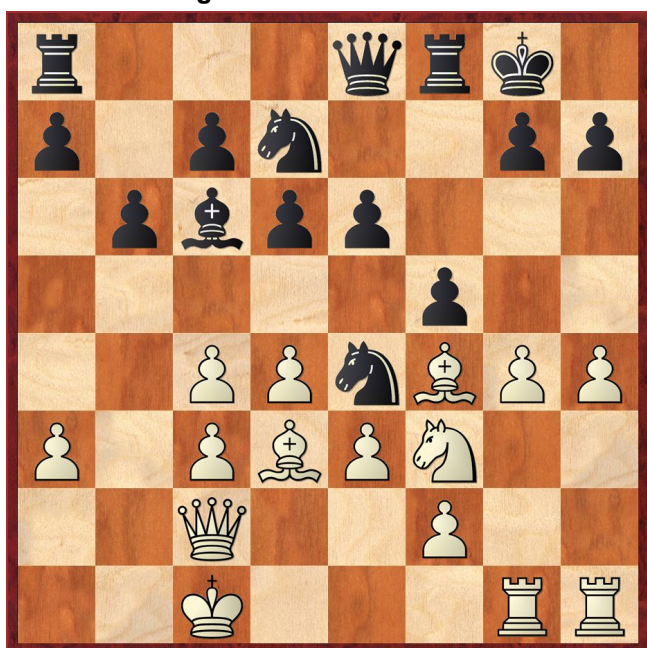
12 ... Bc6

Now, the black queen supports 13 ... Ba4 skewering White's queen and rook.

13 Rdg1

Consistent with his previous move, Francis has a pawnstorm in mind. It will take a few moves to open the files and the battle in the game will revolve around whether he can force open the b1-h7 diagonal so that his other pieces can join the assault.

13 ... Nd7
14 g4



Again consistent with White's plan but it opens some tactical possibilities...

14 ... e5

... which are completely overlooked! There was also 14 ... Nec5 15 dxc5 Bxf3 when

- 16 Rh3 Bxg4 keeps the files closed
- 16 gxf5 needs precise analysis in a chaotic position e.g. 16 ... Bxh1 17 fxe6 Nxc5 18 Bxh7+ Kh8 19 Rxh1 Qxe6 but leaves Black with a material advantage.

Nevertheless, the position is still critical. According to chess theory, the best response to a flank attack is a thrust in the centre. The text move is therefore the natural continuation.

15 gxf5

If White thinks about retreating the bishop, Black's pieces spring into life by exploiting the exposed

position of the knight on f3. For instance, 15 Bh2 exd4 16 exd4 (16 gxf5 Nec5 17 Be2 d3) 16 ... fxe4 17 Rxe4 Nxf2.

Instead, White has the surprising resource 15 Bh6. If Black makes the capture 15 ... gxf6 16 gxf5+ Kh8 17 Bxe4 Bxe4 18 Qxe4, White achieves the type of position he has been aiming for. The g file is an avenue of attack and the white queen can penetrate via h6 e.g. 18 ... exd4 19 Qxd4+ Nf6 20 Qf4. Black has to ignore the bishop and continue 15 ... Nec5 much as in the previous note.

15 ... exf4

The black queen is operating down the e file protecting the knight outpost! White has to justify the piece sacrifice.

16 d5 Ba4!

An excellent tactical deflection which is far from obvious but wins on the spot. The white queen cannot simultaneously threaten e4 and protect f2.

17 Qxa4 Nxf2

Now the black queen hits e3 winning the hanging knight on f3. Oh, there is a knight fork as well... White can only try desperation measures.

18 Rxe3+ Kxe3
19 Rg1+ Kh8
20 Kc2 Nxd3
21 Ng5

21 Kxd3 Nc5+ wins the white queen to a fork and a discovered attack.

21 ... Qxe3
22 Qxd7 Qe2+
23 Kb3 Nc5+
24 Kb4 Qb2#

Ray Ulett / Paul Hanks

Eye Opener

Gambits are tricky things. They can merely make your opponent smile and cause a break in concentration or plunge you both into time trouble before reaching move 10! I wonder which was the case here :-

F Bowers v N Greenwood

New England B v Warboys C, 27.09.17

1 e4 c5 2 Nf3 Nc6 3 d4 cxd4 4 Nxd4 e5 5 Nf3 Nf6 6 Bc4

Black chose 6 ... Bb4+ but could have played

6 ... Nxe4 7 Qd5

7 0-0 Nf6 (7 ... d6 8 Bxf7+ Kxf7 9 Qd5+ Be6 10 Qxe4) 8 Re1 d6 and Black's position looks solid.

7 ... Nd6 8 Bb3 a5

Or 8 ... f6 9 0-0 Qa5 10 Qd1 b6 11 Bd2 Qc5 12 Bd3=

9 a4

If 9 Nxe5 Qe7.

9 ... e4

9 ... f6 10 0-0 with compensation.

10 0-0 exf3 11 Re1+ Be7 12 Bf4 (12 Qxd6!?)

Would you have been happy to reach this position?