

New Englander

Chess Club Update – February 2018

Chairman's Chatter

What a mountain of results! During the past month, the club has played 6 matches, 3 rounds of the club championship as well as a good crop of games in the Club Ladder competition. February is a little more sedate (5 matches and 2 rounds) but has one fewer club evening. I am concerned by the increasing number of postponements so please make re-arrangements if you do not have another commitment. You are running out of road!

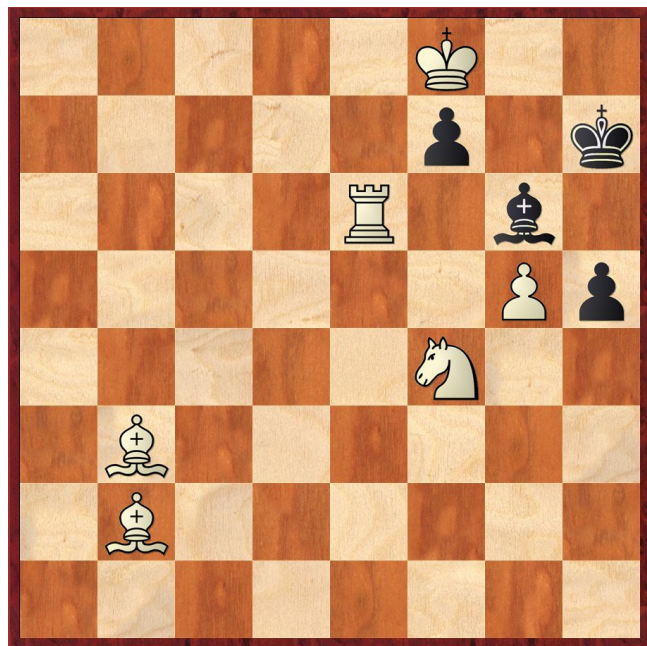
Paul Hanks

Diary Dates

- 25th February The team championship of the East Anglian Chess Union takes place in Bury St Edmunds. Please contact Francis Bowers to participate.
- 10-11th March The EACU will be holding its new Individual Championship tournament at Whittlesford, Cambs with Open, U-170 and U-130 categories. The entry form appears on the club website.
- 21st March Lancaster Club AGM. There will be no club meeting on this evening.

Puzzle Problem

White to play and mate in 2



Last Month's solution

Position : 8/8/8/7p/5Kpk/8/8/1R4N1

1 Rb4 g3 2 Kf5#

Website to Watch

February is not a good month for grandmaster tournaments. The strongest will be the Aeroflot Open in Moscow from 20th-28th February and the prize fund for the 'A' tournament will attract many star players. You could enter the 'C' tournament for a mere €300 but you would need to come fourth to show a profit! The official website is www.acfed.ru but I have never found Russian websites very easy so a general viewer e.g. www.chessbomb.com might be better.

Result Round-up

Cambridgeshire County Chess Leagues

Royston	3½	New England A	1½
L Varnam	0	R Ilett	1
D Coleman	1	P Walker	0
K Clark	1	F Bowers	0
P Kemp	½	P Hanks	½
M Pinner	1	E Serban	0

New England B	2½	Peterborough B	1½
P Hanks	½	G Tandy	½
P Spencer	½	M Connolly	½
R Jones	½	K Johns	½
D Lane	1	M Speyer	0

Team 550 Competition

Godmanchester	2½	NE Cavaliers	1½
J Wright	½	P Turp	½
M English	0	M Ingram	1
A Ellul	1	M Tarabad	0
B Smith	1	P O'Gorman	0

Spalding	1½	NE Patriots	2½
P Cusick	0	R Ilett	1
T Nottingham	½	C Russell	½
P Szutkowski	1	J Parker	0
T Bennett	0	P Weinberger	1

NE Cavaliers	P	Spalding	P
Re-arranged for 14 th February 2018			

NE Cavaliers	P	NE Patriots	P
Provisionally re-arranged on 28 th March 2018			

Fenland Plate

Warboys Y	1½	NE Patriots	2½
M Misson	½	R Ilett	½
N Greenwood	½	P Hanks	½
P Wells	½	C Russell	½
D Polehonski	0	P Weinberger	1

Peterborough	2½	NE Cavaliers	1½
S Caraway	½	P Walker	½
M Connolly	½	F Bowers	½
N Fisher	1	M Ingram	0
R Dalton	½	M Tarabad	½

New England Club Ladder

White		Black	
P Weinberger	1	0	I Garratt
R Ilett	½	½	F Bowers
P Walker	1	0	N Wedley
F Bowers	1	0	M Ingram
S Walker	0	1	M Tarabad
T Ingram	1	0	P Weinberger
M Tarabad	1	0	T Ingram
M Ingram	0	1	R Ilett

Position	Change		Player	Record @ 31/01/18
	Month	Overall		
1	-	+3	P Hanks	1,1
2	-	+5	P Spencer	1
3	+1	+9	M Tarabad	0,1,1,1
4	-1	-3	F Bowers	1,1,½,½,½,1
5	-	+1	P Walker	0,½,1,1
6	-	-3	N Wedley	½,0,1,1,1,0,0
7	+1	+1	R Ilett	1,1,½,0,½,1
8	-1	-6	J Parker	0,½,1,0,0,1,½
9	-	-4	S Walker	0,1,0
10	-	-	P O'Gorman	0,0,0,1
11	-	-2	M Ingram	0,1,½,0,0,0
12	+2	+2	T Ingram	1,0,1,0
13	-	-	R Jones	1
14	-2	-3	P Weinberger	0,1,0
15	-	-	D Lane	0,0
16	-	-	I Garratt	0,0

Club Championship

Round 1			
P Spencer	P	P	P Weinberger
J Sutherland	0	1	M Williams

Round 3			
R Ilett (2)	P	P	E Serban (2)
D Lane (2)	0	1	P Hanks (2)
P Spencer (1+ P)	1	0	J Parker (1)
S Wozniak (½)	0	1	P O'Gorman (1)
M Tarabad (0)	0	1	M Ingram (0)
T Ingram (0)	1	0	M Williams (1+ P)
J Sutherland (0+ P)	0	1	S Walker (0)

Round 4			
P Walker (3)	0	1	R Ilett (2+ P)
P Hanks (3)	0	1	P Spencer (2+ P)
E Serban (2+ P)	1	0	R Jones (2)
F Bowers (2)	1	0	D Lane (2)
P O'Gorman (2)	1	0	J Sutherland (0+ P)
J Parker (1)	P	P	P Weinberger (1+ P)
S Walker (1)	1	0	T Ingram (1)
C Russell (1)	1	0	M Ingram (1)
N Wedley (½)	0	1	S Wozniak (½)
M Williams (0+ P)	P	P	M Tarabad (0)

Round 5			
P Spencer (3+ P)	P	P	E Serban (3+ P)
R Ilett (3+ P)	P	P	P O'Gorman (3)
F Bowers (3)	0	1	P Walker (3)
R Jones (2)	½	½	P Hanks (3)
D Lane (2)	0	1	S Wozniak (½)
S Walker (2)	P	P	C Russell (2)
P Weinberger (1+2 P)	½	½	T Ingram (1)
M Ingram (1)	P	P	J Parker (1+ P)
M Tarabad (0+ P)	1	0	J Sutherland (0+ P)
M Williams (1+2 P)	0	1	N Wedley (½)

Round 6		
P Walker (4)		E Serban (3+2P)
R Ilett (3+2P)		P Spencer (3+2P)
P O'Gorman (3+P)		F Bowers (3)
S Wozniak (2½)		P Hanks (3½)
C Russell (2+P)		R Jones (2½)
T Ingram (1½)		D Lane (2)
M Williams (1+2P)		P Weinb'r (1½+2P)
N Wedley (1½)		S Walker (2+P)
J Sutherland (0+P)		M Ingram (1+P)
J Parker (1+2P)		M Tarabad (1+P)
Match night : 7 th February Deadline : 21 st February Next draw : 22 nd February		

New England Grand Prix

Player	Champ	Ladder	League	Cup	550 Team	Total	TPR*
P Hanks	3½	2	8	1½	½	14½	164
F Bowers	3	4½	4½	1½		13½	168
R Ilett	3	4	2	2	1½	12½	176
P Walker	4	2½	2½	1		10	168
P Spencer	3	1	2½		1	7½	147
M Tarabad	1	3½	1	½	2	8	95
J Parker	1	3	0	0	2	6	99
S Walker	2	1			3	6	110
P O'Gorman	3	1		½	1	5½	86
R Jones	2½	1	1½		½	5½	127
P Weinberger	1½	1	1	1	2	6½	101
N Wedley	1½	4				5½	102
D Lane	2	0	2		½	4½	100
E Serban	3		1			4	148
M Ingram	1	1½	1		1	4½	93
C Russell	2			½	1½	4	110
T Ingram	1½	2				3½	83
S Wozniak	2½			½	½	3½	102
M Williams	1					1	69
P Turp					½	½	128
J Sutherland	0					0	35
I Garratt	0	0			0	0	27

* Tournament Performance Rating is approximate and excludes Summer League

Match of the Month

S Walker v M Ingram

New England Club Ladder, 06.12.2017

Way back (and I am talking about quite a few years ago), I always use to lose to Mike at club level and also in chess congresses whenever our paths crossed.

1 **d4** **d6**
2 **Nf3** **Nf6**

This opening is featuring quite regularly in Mike's repertoire and his intention seems to be to convert a queen's pawn opening into a Philidor Defence. I, on the other hand, want to continue with one of my favourites - a variation of the Trompovsky Attack (normally 1 d4 Nf6 2 Bg5). When 2 Nf3 is played, it is called the Veresov System, more akin to the Torre Attack. (See also my win S Walker v M Tarabad in the New Englander for February 2016 where I used the same system.) For further information on the Trompovsky Attack, see the excellent in-depth study in the New Englander issue August 2011.

3 **Bg5** **Nbd7**

One of White's threats was to inflict damage on Black's pawn structure with 4 Bxf6 but having deferred Bc1-g5 by one move, Black can sidestep the problem while consistently following his development plan.

4 **e3** **e5**
5 **c3** **Be7**
6 **Nbd2** **c6**
7 **dxe5** **dxe5**

From now onwards, my attack seemed to play itself, which is somewhat a rarity for me.

8 **Bxf6** **Bxf6**

Obviously not 8 ... Nxf6 due to 9 Nxe5 or so I thought. The computer is not so convinced that the two recaptures are much different. Its main line is 9 ... 0-0 10 Qc2 Qc7 11 Ndf3 b5 when it is hard for a human to appreciate that the bishop pair and having castled is sufficient compensation for the pawn.

9 **Ne4** **Be7**
10 **Nd6+** **Bxd6**
11 **Qxd6** **f6**
12 **0-0-0** **g5**

By loosening the kingside pawns, the text move smacks of giving up hope of ever castling which is risky with the queens still on the board. 12 ... Qe7 13 Qxe7+ Kxe7 is a freeing manoeuvre which also renounces castling but in slightly safer circumstances. However, after 12 ... Qe7, I would have still played 13 Bc4 which stops Black castling, and then if 13 ... Qxd6 14 Rxd6 and then 15 Rhd1 with the same pin motif as in the actual game.

13 **Bc4**

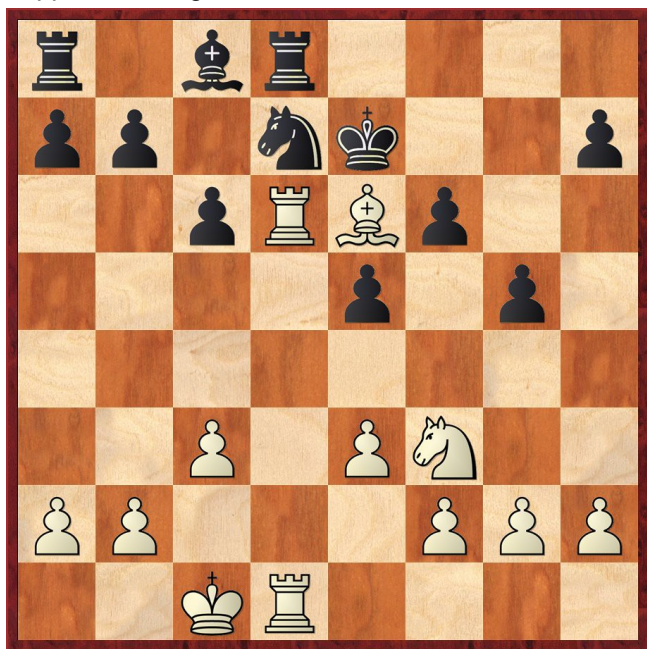
13 h4 discourages 13 ... Qe7 because 14 hxg5 wins a pawn. If 14 ... fxg5, 15 Qxe7+ Kxe7 16 Nxg5 but I could try for more with 15 Qh6 Rg8 (at worst, 15 ... g4 drops the pawn to 16 Qh5+ Qf7 17 Qxg4) 16 Rd6 Nf8

(otherwise 17 Re6) 17 Bc4 Rg7 18 Rxc6 gives some idea of how the attack might evolve.

I anticipated the possible alternatives which are similar - 13 ... g4 14 Qe6+ Qe7 15 Qxg4 or 13 ... gxh4 14 Nxh4 Qe7 15 Qxe7+ Kxe7 16 Ng6+.

13	...	Qe7
14	Be6	Qxd6
15	Rxd6	Ke7
16	Rhd1	Rd8

16 ... Nb6 would avoid cramping Black's position as happens in the game.



This is a difficult position even during post-mortem analysis with computer assistance. With the pin along the d file, Black cannot make any useful moves with his knight, bishop, king and king's rook. To maintain the pressure, however, I cannot move either rook and although my bishop is mobile, it is already on its optimum square. I can move my knight and Mike his queen's rook. With six pieces locked in an impasse, long variations dominate and the position is assuming the character of an endgame.

If I were allowed illegal moves, I should immediately place my knight on f5. To do so within the rules and evading the black pawns is not so easy. One route is Nf3-g1-e2-g3-f5 i.e. four moves. Can Black get relief in that time? One option is a7-a5, Ra8-a6 and c6-c5 – three moves.

What I need is either a tactical trick during my knight's tour that distracts Black by a tempo or a second avenue of attack.

Firstly, when the black rook reaches a6, I need to remember Be6-c4 so it is best to keep the bishop on the a2-g8 diagonal. But it is also required on the h3-c8 diagonal if I am to win material on d7. Not just from its appearance, e6 is the optimum square indeed!

Secondly, how about the thrust 17 h4? If 17 ... gxh4 18 Nxh4 and the knight reaches f5 even quicker. So how does Black respond?

- 17 ... h6 18 hxg5 hxg5 opens the h file and 19 Ng1 a5 20 Ne2 Ra6 21 Ng3 c5 22 Nf5+ Ke8 23 Rxa6 bxa6 24 Rh1 with nasty threats e.g. 24 ... Nf8 25 Bxc8 Rxc8 26 Nd6+ Kd8 27 Nxc8 Kxc8 28 Rh8.
- 17 ... e4 a looks more serious defence because 18 Ng1 (not 18 Nd4 Kxd6) 18 ... gxh4 covers the g3 square but the black pawns are now weak e.g. 19 Ne2 a5 20 Bf5 h6 21 Re6+ and 22 Rxe4.

17 Bf5

Many of the moves in the previous comment actually occur during the game but in a different order. Here, I block the f5 square slightly prematurely and the threats are not quite as telling.

17	...	h6
18	h4	a5

Striving for some counter attack on the queenside.

19	hxg5	hxg5
20	Nh2	Ra6
21	Ng4	c5
22	R6d2	a4
23	a3	

The computer likes 23 Nh6 with the idea of Bf5-g4 and Nh6-f5+ (it gets there in the end!). When Black replies to the check with Ke7-e8, Nf5-d6+ and Nd6xBc8 will be decisive.

23	...	b5
24	e4	Ra7
25	Ne3	Bb7

A tragedy which can only be explained by Mike relaxing. After counting attackers and defenders of d7 for several moves, he neglected to do so again once his previous move finally secured the square. White still has the upper hand after the best try to untangle with 25 ... Re8 26 Rh1 Kd8 when I have a number of good options 27 Rh7, 27 Bg6, 27 Rdd1 etc.

26	Rxd7+	Rxd7
27	Rxd7+	Ke8
28	Nd5	

The game is now won purely on the basis of the material advantage as Black needs to give up a further piece to protect his king e.g. preventing 28 ... c4 29 Nc7+ Kf8 30 Ne6+ Kg8 31 Bh7+ Kh8 32 Nf8 etc.

28 ... Bxd5 29 Rxa7 Bc4 30 Rc7 Kd8 31 Rxc5 Ke7 32 Rc6 Bf1 33 g3 Bc4 34 Rc7+ Kd8

I should have exchanged my rook for the bishop for a quicker ending.

35 Rh7 Ke8 36 Bg6+ Kf8 37 Bf5 Kg8 38 Rb7 Kf8 39 Rb8+ Ke7 40 Bc8 Bd3 41 Ba6 Bxe4 42 Bxb5 f5 43 Bxa4 g4 44 Re8+ Kd6 45 b4 f4 46 gxf4 Bf5 47 fxe5+ Kd5 48 Bb3+ Ke4 49 Bc2+ Kf3 50 Bxf5 Kxf2 51 Bxg4 1-0

Steve Walker