

# New Englander

## Chess Club Update – September 2018

### Chairman's Chatter

It's the start of another new season! Sadly, the Cambridgeshire leagues have been depleted by the demise of Warboys C but this does take some pressure off the calendar of events by freeing up some evenings. I hope that means we can continue to hold the full schedule including a Club Championship over nine rounds.

No time to rest on your laurels, however. The first rounds will be in September with league matches not far behind. There should be plenty of opportunities for filling up the other columns of the Grand Prix tournament in addition to the ongoing Club Ladder.

*Paul Hanks*

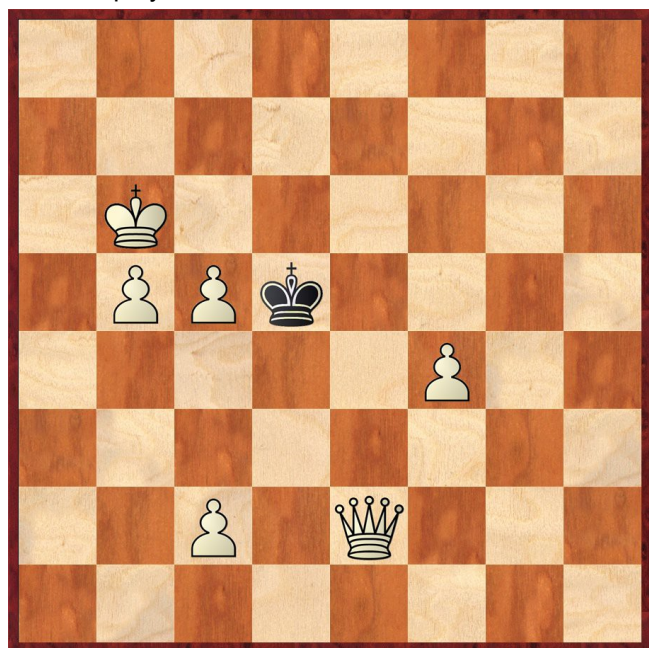
### Diary Dates

23<sup>rd</sup> September The Cambridgeshire Rapidplay will be held at Whittlesford with four sections (Open, U160, U125 and U90). The five rounds start at 10am.

24-25th November The County Individual Championship is a Swiss tournament with Open, U140 and Junior sections. It takes place at Peterborough Bridge Club, Lincoln Road.

### Puzzle Problem

White to play and mate in 2



Last Month's solution (P F Blake 1902)

Position : 3BN3/1n2r2p/2p1k2n/7Q/8/1p6/3RK3/1B7

1 Ke1 b2 2 Ba2# [1 ... c5 2 Qd5#; 1 ... Nb any 2 Nf5#; 1 ... Nh any 2 Rd6#; 1 ... Rg7 2 Nxg7#; 1 ... Rc7 2 Nxc7#; 1 ... Rxe8 2 Qxe8#; 1 ... Rd7 2 Re2#; 1 ... Rf7 2 Qe2#]

### Website to Watch

We have to wait until the end of the month to enjoy the World Chess Olympiad being held in Batumi, Georgia from 23<sup>rd</sup> September to 6<sup>th</sup> October. The website is <https://batumi2018.fide.com/en> but it had yet to be populated with data when viewed recently.

The website <https://worldchess.com/london> lets you know there are less than 70 days until the Carlsen v Caruana match for the World Chess Championship in London. It links to <https://www.ticketmaster.co.uk>, the ticketing site, where it seems general admission is £45(weekday)/£70(weekend) but there are VIP tickets at £350-600. Plan your visit carefully!

### Result Round-up

#### Club Championship

Round 1		
S Walker		M Tarabad
R Jones		C Russell
S Wozniak		P O'Gorman
P Walker		D Lane
P Spencer		J Parker
R Ilett		E Knox
T Ingram		E Smith
J Sutherland		P Weinberger
P Hanks		P Turp
Match night : 5 <sup>th</sup> September		Next draw : 6 <sup>th</sup> September

Round 2		
J Sutherland (1)		P Walker (1)
S Wozniak (1)		R Ilett (1)
T Ingram (1)		P Spencer (1)
M Tarabad (½)		P Turp (½)
C Russell (½)		S Walker (½)
P Weinberger (0)		R Jones (½)
E Knox (0)		N Wedley (Rd 1)
D Lane (0)		J Parker (0)
P O'Gorman (0)		E Smith (0)
Match night : 12 <sup>th</sup> September		Next draw : 13 <sup>th</sup> September
N Wedley (P)		P Hanks (½)

## New England Club Ladder

White		Black	
P Walker	1	0	T Ingram
P Walker	½	½	P Spencer
P Walker	1	0	P Hanks
P O'Gorman	0	1	M Tarabad
D Lane	0	1	R Ilett

Position	Change		Player	Record @ 29/08/18
	Month	Overall		
1	-	+1	J Parker	0
2	+1	-1	P Spencer	1,½,½
3	-1	-	P Walker	½,1,½,1
4	-	-	T Ingram	0
5	-	-	P Hanks	0
6	-	-	M Tarabad	1
7	-	-	P O'Gorman	0
8	-	-	R Ilett	1
9	-	-	D Lane	0

## New England Grand Prix

Player	Champ	Ladder	League	Cup	550 Team	Total	TPR*
P Walker		3				3	168
P Spencer		2				2	165
R Ilett		1				1	179
M Tarabad		1				1	120
D Lane		0				0	86
P O'Gorman		0				0	38
P Hanks		0				0	124
T Ingram		0				0	64
J Parker		0				0	88

\* Tournament Performance Rating is approximate

## Match of the Month

I played in the Lincolnshire County Championship over the weekend of 21<sup>st</sup>-22<sup>nd</sup> July, for which I am eligible as I live just inside their county boundary. After scoring 2 out of 3 on the Saturday, I was drawn against a local rival on the Sunday morning.

**P N Walker v F Bowers**  
Lincs County Championship; 22.07.18

1	<b>c4</b>	<b>Nf6</b>
2	<b>Nc3</b>	<b>e5</b>
3	<b>Nf3</b>	<b>d6</b>
4	<b>d4</b>	<b>exd4</b>
5	<b>Nxd4</b>	<b>Be7</b>

A version of the English Opening which is often positional in the early stages. White simply aims to control more space and restrict Black's counterplay. It's more usual for Black to develop this Bishop to g7, where it can become active on the a1-h8 diagonal.

**6 g3**

White focuses his pieces on control of the d5 square.

**6 ... 0-0**  
**7 Bg2 Na6**

Black already has difficulty developing his pieces to their natural squares as 8 ... Nc6 loses a pawn.

**8 0-0 c6**

This weakens the pawn on d6, which is no longer protected by another pawn.

**9 e4 Nc7**  
**10 Bf4 Ne6**  
**11 Be3 Nxd4**  
**12 Qxd4**

Although it's usually risky to move the queen to the centre of the board in the early stages, it's quite safe here as Black has no means of attack. I wanted to bring a rook to d1 to put further pressure on the d6 pawn.

**12 ... Be6**  
**13 b3 Ne8**

Fritz prefers 13 ... Ng4 14 Bc1 Bf6 15 Qd2 Qb6 15 Bb2 which it assesses as equal.

**14 Rad1 Qa5**

Threatening 15 ... Bf6 and 16 ... Bxc3.

**15 Qd2**

In turn threatening 16 Nd5 Qxd2 17 Nxe7+ Kh8 18 Rxd2 winning a piece. In such cases of penetration behind the enemy pawns, it is wise to check that the knight still has an escape route e.g. after 18 ... g6. Here, it takes so long for Black to attack the knight that White has time for 19 f4 when

- 19 ... f6 (threatening 20 ... Rf7) 20 f5 gxf5 (20 ... Bd7 21 fxc6) 21 exf5 Bd7 22 Re1 Rf7 23 Bh6
- 19 ... f5 (to prevent White advancing to this square) can be met by 20 Rxd6 Nxd6 21 Bd4+.

**15 ... Kh8**

Removing the above threat by avoiding the check.

**16 Bd4 Qh5**

Francis plays to his strengths by creating tactical threats on the kingside.

**17 Ne2**

With ideas of eventually trapping the queen, which can no longer retreat to a5.

**17 ... Bg5**  
**18 f4**

18 Nf4 was a better move - Fritz gives 18 ... Qh6 19 Be3 Qf6 20 Qb4 Bc8 21 c5 with advantage to White.

**18 ... Bg4**  
**19 Rde1**

Unpinning the knight but I missed the clever 19 h3! which leads to a pawn storm by 19 h3 Bxe2 20 g4 Qg6 (20 ... Qh4 21 fxg5 Bxf1 22 Bf2) 21 Qxe2 Be7. White then has a choice of tempting continuations.

19 ... Bf6  
20 Be3

White doesn't allow Black to free his position by exchanging pieces.

20 ... a5

Black seeks play on the other wing by attempting to open the a file and activating the Rook on a8. White naturally avoids this.

21 a3 a4  
22 b4 Nc7  
23 Nc3

White plays patiently but a better chance was the more decisive 23 f5! after which Fritz gives 23 ... Bxe2 (other moves allow Nf4) 24 Rxe2 Be4 (the jest 24 ... Bc3 25 Qd3 is no improvement as 26 Bf3 would combine threats to d6 and c3) 25 Bf3 Qh3 (the only square) 26 Qd1 (attacking the pawn on a4) Ne8 27 c5 dxc5 28 Bxc5 Rg8 29 Qd7 and winning material.

23 ... Be6

Francis offered the draw which I declined. Fritz thinks that White's space advantage is worth half a pawn.



24 Bf3

24 Bb6 Rfc8 25 Qd3 was better, although White can't immediately play 25 Bxc7 Rxc7 26 Qxd6 because 26 ... Rd7 would trap the queen. Another option was again 24 f5 to trap the black queen after 24 ... Bxc4 25 Bf3 Qh3 26 Nd1 and 27 Nf2.

24 ... Bg4  
25 Bxg4 Qxg4  
26 Ne2

I wanted to bring the knight to d4 but Fritz recommends 26 f5 Be5 27 Bf4 or simply 26 Bd4 to maintain White's slight advantage.

26 ... Qe6  
27 Qc2 Rfe8  
28 Bb6 Na6  
29 Nd4 Bxd4+

If Black doesn't exchange the knight, it will go to f5 and attack the pawn on d6.

30 Bxd4

At this point, I felt I was winning, having restricted the pawn on d6 and with a centrally placed bishop against a knight on the edge of the board. However, Francis is a wily opponent and immediately finds counterplay.

30 ... c5

Threatening the pawn on b4, I have to exchange because 31 Bc3 allows 31 ... Qxc4. Or do I?

31 f5

An intermediate move with the idea of f5-f6. I didn't want to allow 31 bxc5 dxc5 after which I have to move my bishop and Black can prevent this idea with f7-f6. Sadly, it doesn't deserve the full "!" as it's not quite as good as it looked at the time.

31 ... Qd7  
32 bxc5 Nxc5  
33 f6 g6  
34 Qd2

At the time, I felt that I had a decisive advantage here but Fritz disagrees and recommends instead 35 Bxc5 dxc5 36 Rd1 with a slight advantage to White in the queen and rook ending.

34 ... Ne6

I had underestimated how strong the Knight would be on this square.

35 Qh6

If White could only find a way to bring a Rook to the h file, he could hope to deliver mate on h7 but his own pawn on g3 prevents this.

35 ... Rg8

Probably a sensible precaution. 35 ... Qc6 immediately would provoke 36 Rf4 when Black can defend with 36 ... g5. It looks loose and Black might try something else which lands him in trouble e.g. 36 ... Rg8 37 Qxh7+.

36 Be3

36 Qe3, playing for the draw, is better.

36 ... Qc6

Threatening the pawns on c4 and e4.

37 Rd1 Rad8 1/2-1/2

Francis offered the draw which I was happy to accept. Black has a slight advantage but there is a lot of play still required to win and we were both short of time. A fair result.

Francis and I went on to share 3<sup>rd</sup> place and the grading prize with 3/5 behind the overall tournament winner and County Champion Jason Dillely.

Peter Walker