

New Englander

Chess Club Update – November 2018

Chairman's Chatter

The clocks have changed and the weather is starting to realise it should be winter. Darker evenings seem more suitable for playing chess but it does have a practical consequence. Can whoever arrives first at the club please remember to check if the heating has been switched on? At the last club championship round, I noticed that it took a little time for the room to warm up so the earlier the radiators go on, the cosier it will be!

P.S. The Match of the Month will give you some early fireworks for Bonfire Night.

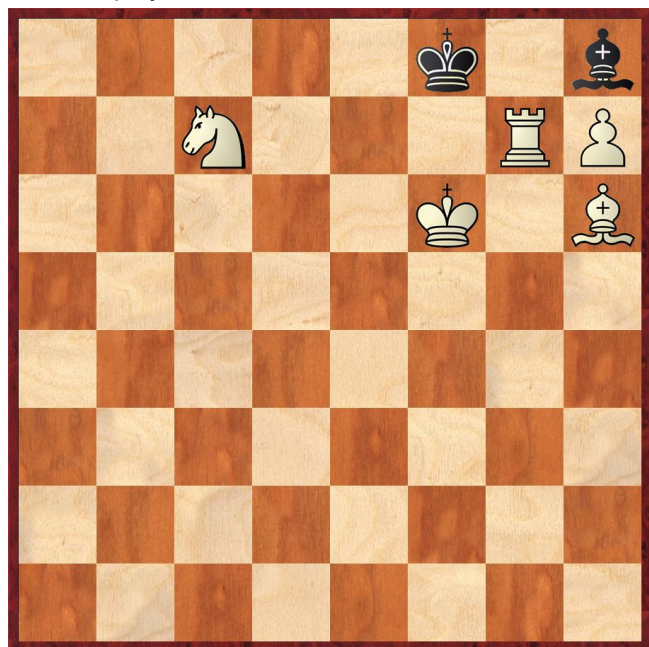
Paul Hanks

Diary Dates

24-25th November The Cambridgeshire County Individual Championship is a Swiss tournament with Open, U140 and Junior sections and takes place at Peterborough Bridge Club, Lincoln Road.

Puzzle Problem

White to play and mate in 2



When you have solved this, you might also like to try it as a "White to mate in 3" problem!

Last Month's solution (Mach 1904)

Position : 8/8/8/3k4/2R1R1n1/8/8/4K2Q

1 Qh3 Kd6 2 Qd3# [1 ... Ne5 2 Red4#; 1 ... N other 2 Qe6#]

Website to Watch

There is only one show in town this month. The World Championship match between Carlsen and Caruana takes place at The College, Holbourn, London from 9th to 26th November. Games start at 3pm and there is a rest day after each even-numbered game (with additional free time between the final rounds 11 and 12 if the match reaches that stage). The website <https://worldchess.com> is supposed to carry the moves for free but somehow, it is far easier to find their premium account costing \$20. If you want to know about visiting and seeing the event in the flesh, ask Ed Knox!

Further afield, Bled, Slovenia hosts the World Senior Chess Championship from 18th to 29th November. Games can be viewed at www.wsc2018.european-chessacademy.com. There are sections for Over 50 and 65+ if you fancy your chances in the future!

Result Round-up

New England Club Ladder

White		Black	
M Tarabad	0	1	D Lane
N Wedley	0	1	M Tarabad
E Smith	0	1	M Tarabad
J Parker	0	1	N Wedley
P Walker	0	1	R Ilett
D Lane	0	1	R Ilett

Position	Change		Player	Record @ 31/10/18
	Month	Overall		
1	+9	+9	N Wedley	0,1
2	-1	-	J Parker	0,0
3	-1	-2	P Spencer	1,½,½
4	+4	+4	R Ilett	1,1,1
5	-1	-1	T Ingram	0
6	-3	-3	P Walker	½,1,½,1,0
7	-2	-2	P Hanks	0
8	+1	+1	D Lane	0,1,0
9	-2	-2	P O'Gorman	0
10	-4	-4	M Tarabad	1,0,1,1
11	-	-	E Smith	0

Cambridgeshire County Chess Leagues

New England A	1½	St Neots A	3½
P Walker	1d	Default	0d
R Ilett	0	P Brown	1
P Spencer	0	R Palumbo	1
R Jones	0	P Barkas	1
C Russell	½	C Emery	½

New England A	2	Peterborough A	3
J Dilley	½	A Timosenko	½
R Ilett	½	C Tandy	½
P Hanks	½	F Bowers	½
P Spencer	½	M Connolly	½
C Russell	0	D Browning	1

New England B	3½	Peterborough B	½
P Walker	1	A Kaszuba	0
R Ilett	½	M Connolly	½
P Spencer	1	C Bengston	0
C Russell	1	G Waterman	0

Spalding	P	New England B	P
-----------------	----------	----------------------	----------

Team 550 Competition

NE Patriots	0	NE Cavaliers	4
P Spencer	0	P Turp	1
P Weinberger	0	M Tarabad	1
S Walker	0	D Lane	1
E Smith	0	J Sutherland	1

NE Patriots	2½	Godmanchester	1½
P Spencer	1	J Wright	0
P Weinberger	1	M English	0
S Walker	½	A Ellul	½
E Smith	0	B Smith	1

Godmanchester	½	NE Patriots	3½
J Wright	½	C Russell	½
A Rankine	0	P Weinberger	1
M English	0	S Wozniak	1
B Taylor	0	J Parker	

Club Championship

Round 2			
M Tarabad (½)	0	1	P Turp (½)
N Wedley (P)	P	P	P Hanks (½)
S Wozniak (1)	P	P	R Ilett (1)

Round 3			
E Smith (0)	0	1	E Knox (0)
E Smith (0)	1	0	J Parker (0)
P Spencer (2)	1	0	N Wedley (1+P)
P Walker (2)	1	0	S Wozniak (1+P)
P Turp (1½)	½	½	R Ilett (1+P)
P Hanks (½+P)	P	P	M Tarabad (½)
R Jones (½)	P	P	P O'Gorman (1)
C Russell (1)	P	P	J Sutherland (1)
S Walker (1)	P	P	T Ingram (1)
P Weinberger (1)	P	P	D Lane (1)

Round 4			
J Parker (0)	0	1	E Knox (1)
S Walker (1+P)	0	1	P Weinberger (1+P)
M Tarabad (½+P)	1	0	T Ingram (1+P)
S Wozniak (1+P)	½	½	J Sutherland (1+P)
P Turp (2)	½	½	C Russell (1+P)
D Lane (1+P)	P	P	P O'Gorman (1+P)
N Wedley (1+P)	P	P	R Jones (½+P)
P Hanks (½+2P)	P	P	P Walker (3)
R Ilett (1½+P)	P	P	P Spencer (3)

Round 5			
P Walker (3+P)			R Ilett (1½+2P)
P Spencer (3+P)			P Turp (2½)
E Knox (2)			S Walker (1+P)
J Sadler (0+4P)			P Weinberger (2+P)
R Jones (½+2P)			P Hanks (½+3P)
S Wozniak (1½+P)			J Parker (0)
T Ingram (1+P)			P O'Gorman (1+2P)
D Lane (1+2P)			E Smith (1)
N Wedley (1+2P)	0	1	J Sadler (1+4P)
Match night : 28 th November		Next draw : 1 st December	
J Sadler (1+3P)			M Tarabad (1½+P)
J Sutherland (1½+P)			J Sadler (1+2P)
C Russell (1½+P)			J Sadler (1+P)
To be played by mutual agreement			

New England Grand Prix

Player	Champ	Ladder	League	Cup	550 Team	Total	TPR*
P Spencer	3	2	1½		1	7½	145
P Walker	3	3	1			7	172
R Ilett	1½	3	1			5½	167
P Weinberger	2				2	4	119
P Turp	2½				1	3½	156
C Russell	1½		1½		½	3½	118
M Tarabad	1½	1			1	3½	115
J Sutherland	1½				1	2½	120
S Wozniak	1½				1	2½	121
E Knox	2					2	102
D Lane	1	0			1	2	116
S Walker	1				½	1½	79
N Wedley	1					1	95
T Ingram	1	0				1	74
P O'Gorman	1	0				1	74
P Hanks	½	0	½			1	142
J Parker	0	0			1	1	59
E Smith	1				0	1	48
J Sadler	1					1	158
R Jones	½					½	90
J Dille			½			½	216

* Tournament Performance Rating is approximate

Match of the Month

The odd number of participants (at present!) in the Club Championship cast me in the role of onlooker for Round 2. Most games adopted a slow opening build-up (e.g. the Colle System) but one game took a very different course.

P Weinberger v R Jones

New England Club Championship Rd 2, 14.09.2018

1 e4 d6
2 d4 Nf6
3 Bd3

This is a slightly unusual move but not unknown at the highest level. Most games continue 3 ... e5 and steer back towards a more conventional Philidor Defence; perhaps the best known names to reach this position were Anand and Timman at Linares 1991.

3 ... c6

Ron delays the central thrust for a move and allows Peter to take a bigger foothold.

4 f4 e5
5 fxe5 dxe5
6 Nf3

An interesting reversal of roles. It was Black offering a gambit pawn through 6 dxe5 but 6 ... Ng4 recovers the e pawn due to tactical threats if White tries to hang on to his booty e.g.

- 7 Bf4 Qb6 when White has problems
 - 8 Nh3 Ne3 9 Qe2 Nxd2+ 10 Qxg2 Qxb2
 - 8 Bg3 Bc5 9 Nf3 Be6 (9 ... Qxb2 looks strong but 10 Nbd2 Ne3 11 Qb1 Qc3 12 Ke2 and with the sang froid of a computer, Fritz says White will escape) 10 b3 (10 Nbd2 Bf2+ 11 Ke2 Bxg3) 10 ... Bf2+ 11 Kd2 Bxg3 12 hxg3 Nf2
- 7 Nf3 Bc5 allows Black easy development such as 8 Qe2 Nd7 9 Bf4 Qb6 10 b3 0-0 11 h3 Nf2 12 Rf1 Nxd3+ 13 Qxd3 (13 cxd3 Bd4) 13 ... Rd8 with good compensation.

6 ... exd4

Instead, it is White who gives up the pawn.

7 Bg5 Be7
8 0-0 0-0
9 e5 Nd5
10 Bxe7 Nxe7

10 ... Qxe7 was safer.

11 Bxh7+

Afterwards, Ron admitted to not seeing this possibility. Black's problem is that he next move must be based on assessing the position several moves hence.

11 ... Kh8

Ron chooses to decline the Greek Gift sacrifice. Psychologically, it seems safer to back away from complications instigated by your opponent but here, there are pointers to fall back on. Many examples in the literature arise from the French Defence e.g. maybe a dozen moves after 1 e4 e6 2 d4 d5 3 e5. In those cases, Black tends to have a pawn on e6 and White has retained his dark-squared bishop.

Here, Black has to analyse 11 ... Kxh7 12 Ng5+ when some continuations obviously fail e.g.

- 12 ... Kh6 13 Nxf7+
- 12 ... Kg8 13 Qh5 Bf5 (13 ... Re8 14 Qh7+ Kf8 15 Rxf7#) 14 Rxf5

but after 12 ... Kg6, it is more difficult to find how White will prosecute the attack. The usual options from the French Defence 13 Qg4 (there is no pawn on e6 so 13 ... Bxg4) or 13 Qd3+ (the knight on g5 is en prise) are not available. One computer variation, 13 Ne4 Qd5 14 Qd3 Kh6 15 Nbd2, seems dangerous for Black but should be defensible.

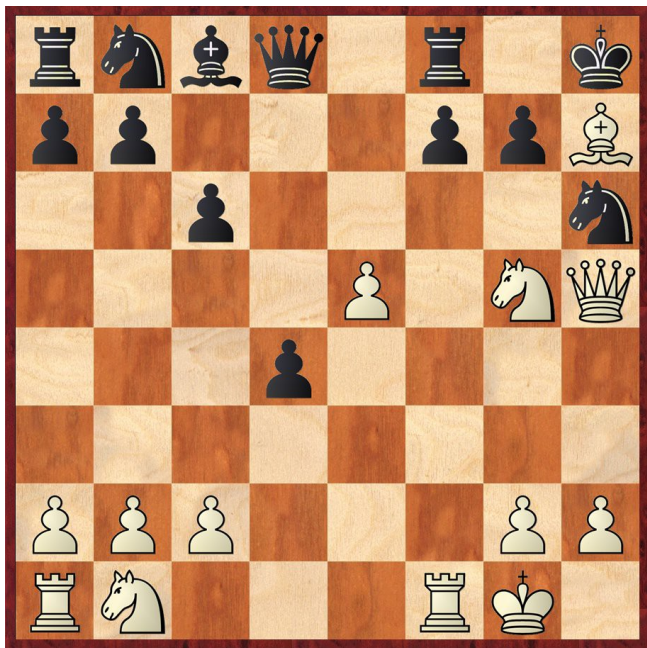
12 Ng5 Nf5

12 ... Ng8 would reach h6 by a less exposed route.

13 Qh5

13 Rxf5 Bxf5 14 Qh5 was an alternative that 12 ... Ng8 would have precluded. It forces 14 ... Qxg5 15 Qxg5 Bxh7 because 14 ... Bg4 15 Qxg4 g6 16 Qh3 Qd7 (16 ... Qxg5 17 Bxg6+ mates) 17 Qh6 Re8 18 Bxg6+ Kg8 19 Bh7+ Kh8 20 Qf6#.

13 ... Nh6



14 Rf6

Bravo! I wondered if Peter would play this (14 ... gxf6 15 Qxh6 mating) but it came after a only few moments of thought.

14 ... Bg4

Initially, I thought this was a refutation but the threats to h6 are so strong, White can pause the attack without diminishing it.

14 ... Qa5 might be thought of as merely a trick to see if White is concentrating too hard on his own plans because 15 Rxh6 runs into 15 ... Qe1#. White can pause again with 15 Nd2 but the game could take an independent turn after 15 ... Bg4 16 Qh4 Qxe5 17 Rxh6 gxf6 18 Qxh6 Qg7 which still challenges White. The attack should still win through after 19 Qh4 (a third pause!) but it is quite hard work to see this from the game position.

The point is that saving the bishop with 19 ... Bd7 allows 20 Nde4 threatening 21 Bf5+ Kg8 22 Nf6+ decoying the queen from defending h7. As result, the soundest defence is 19 ... Nd7 and to fight on after 20 Bf5+ Kg8 21 Qxg4 Nf6.

15 Qh4 Nd7

Black had a final chance to transpose into the above with 16 ... Qa4 but now, it is all downhill.

16 Rxh6 gxf6
 17 Qxh6 Qxg5
 18 Qxg5 Kxh7
 19 Qxg4

The players could have gone home even earlier after 19 Qh4+ Kg8 20 Qxg4+ Kh8 21 Qxd7.

19 ... f5
 20 exf6 Nxf6
 21 Qxd4 Rad8
 22 Qh4+ Kg7
 23 Na3 1-0

Paul Hanks

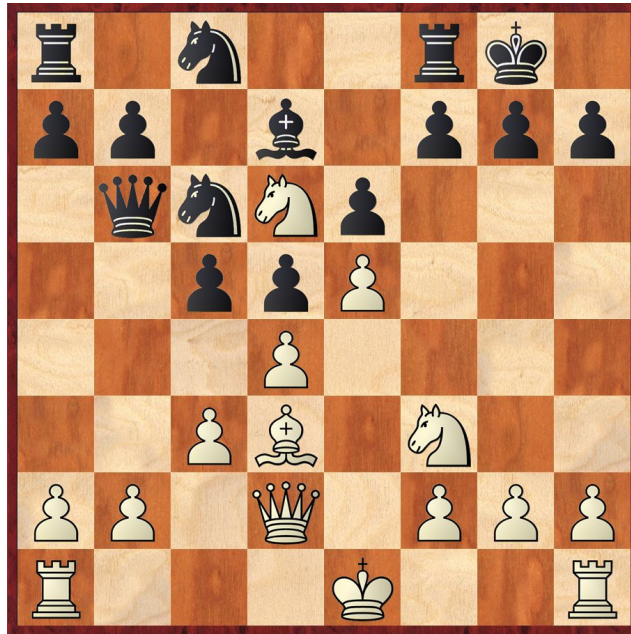
Eye Opener

I have an old book that gives the following game :-

Giusti v Cipriani

Correspondence 1954-55

1 e4 e6 2 d4 d5 3 Nc3 Bb4 4 e5 c5 5 Bd2 Ne7 6 Nb5 Bxd2+ 7 Qxd2 0-0 8 c3 Nbc6 9 Nd6 Qb6 10 Nf3 Bd7 11 Bd3 Nc8



12 Bxh7+ Kxh7

"If 12 ... Kh8, 13 Qg5 leaves Black no hope." Such analysis is only available in correspondence chess

- 13 ... Kxh7 14 Qh5+ Kg8 15 Ng5 Rd8 16 Qxf7+ Kh8 17 Qh5+ Kg8 18 Qh7+ Kf8 19 Qh8+ Ke7 20 Qxg7# is a standard continuation that should be memorised
- 13 ... N6e7 14 Qh5 Ng8 15 Bxg8+ Kxg8 16 Ng5 virtually transposing
- 13 ... Rd8 14 Nxf7+ Kxh7 15 Qh5+ Kg8 16 N3g5 Kf8 17 Nd6 Nxd6 18 exd6 or similarly 13 ... Nxd6 14 Qh5 Rfd8 15 exd6
- 13 ... Nxe5 14 Nxe5 Nxd6 15 Nxd7

13 Ng5+ Kg6

13 ... Kg8 14 Qd3

- 14 ... f5 15 Qh3 Re8 16.Nxe8 Bxe8 17.Qh7+ Kf8 18.Qh8+ Ke7 19.Qxg7+ Kd8 20 Nxe6#
- 14 ... Rd8 15 Qh7+ Kf8 16 Qh5 Be8 17 Nxe8 Rd7 18 Nf6 Rc7 19 Qh8+ Ke7 20 Qe8#
- 14 ... Re8 15 Qh7+ Kf8 16 Qh5 Ke7 17 Qxf7+ Kd8 18 Nxe8

14 Qd3+ Kxg5

14 ... f5 15 Qh3 Kxg5 (15 ... Nxd6 16 Qh7+ Kxg5 17 f4+ Kxf4 18 Qh4+ Ke3 19 Qg3+ Ke4 20 Qf3#) 16 f4+ Kg6 17 g4 fxg4 18 Qxg4+ Kh7 19 Rg1

15 f4+ Kh6

15 ... Kxf4 16 Qg3#

16 Qh3+ Kg6
 17 g4 winning