

New Englander

Chess Club Update – December 2018

Chairman's Chatter

The next round of the club championship is not until 9th January. Given the number of postponements in Round 5, I have decided not to make the draw for a further month and allow us to clear the backlog in December and even 2nd January has been specially set aside for this purpose. No excuses!

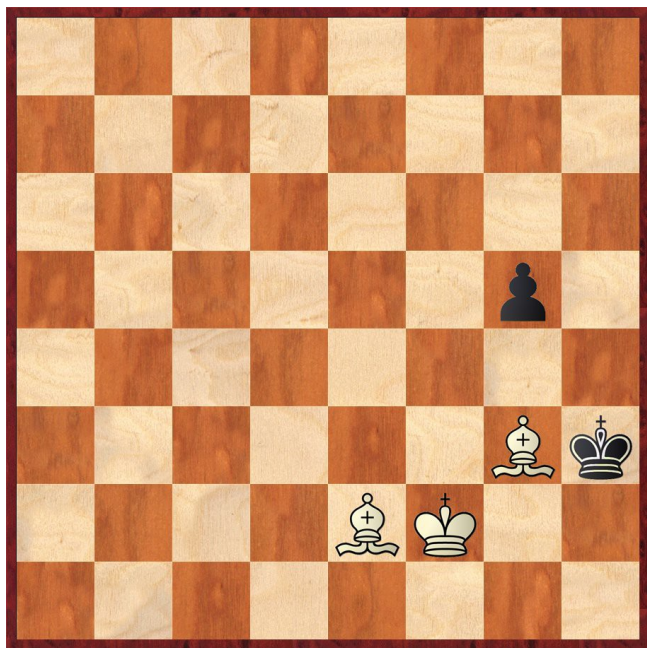
Paul Hanks

Diary Dates

19th December The "Christmas Special" will contain the usual mix of fun games, problems and of course, mince pies!

Puzzle Problem

White to play and mate in 2



Last Month's solution (Meinartz)

Position : 5k1b/2N3RP/5K1B/8/8/8/8/8

1 Ke6 Bxg7 2 h8Q/R#

1 Kf5 Bxg7 2 Ke6 Bxh6 3 h8Q#

Website to Watch

How times change! In February 2010, I reported on the first London Chess Classic and its ninth outing will occur from 11th to 17th December this year. The event is, however, slowly declining and now, there will be only 6 classical games in a knock-out tournament between Caruana, Nakamura, Aronian and Vachier-Lagrave (see www.londonchessclassic.com). When I visited, there were 8 participants in an all-play-all competition.

The good news is that the first three days are hosted at the headquarters of Deep Mind Google which nestle between St Pancras and King's Cross stations. Very convenient by train from Peterborough but the website is reticent about visiting arrangements. The last three days move to Olympia.

Result Round-up

New England Club Ladder

White		Black	
P Weinberger	0	1	T Ingram

Position	Change		Player	Record @ 28/11/18
	Month	Overall		
1	-	+9	N Wedley	0,1
2	-	-	J Parker	0,0
3	+1	+5	R Ilett	1,1,1
4	-1	-3	P Spencer	1,½,½
5	-	-1	T Ingram	0,1
6	-	-3	P Walker	½,1,½,1,0
7	+3	-1	M Tarabad	1,0,1,1
8	-1	-3	P Hanks	0
9	-1	-	D Lane	0,1,0
10	-1	-3	P O'Gorman	0
11	-	-	E Smith	0
12	-	-	P Weinberger	0

Cambridgeshire County Chess Leagues

New England A	2½	Royston	2½
J Dille	½	D Coleman	½
P Hanks	0	P Kemp	1
R Ilett	½	K Clark	½
P Turp	½	P Ribbands	½
P Spencer	1	D Hurricks	0

Warboys A	4	New England A	1
M Misson	1	R Ilett	0
B Duff	1	P Hanks	0
J Beck	1	P Turp	0
N Greenwod	1	P Spencer	0
P Wells	0	C Russell	1

New England B	P	St Neots B	P
----------------------	----------	-------------------	----------

Spalding	P	New England B	P
-----------------	----------	----------------------	----------

Team 550 Competition

NE Patriots	3	Spalding	1
P Spencer	1	T Nottingham	0
C Russell	½	J van Gemeren	½
P Weinberger	½	F Robinson	½
S Walker	1	T Bennett	0

NE Cavaliers	P	Godmanchester	P
---------------------	----------	----------------------	----------

Fenland Trophy

Royston	1½	NE Patriots	2½
P Ribbands	0	R Ilett	1
S Jackson	0	P Hanks	1
D Hurricks	1	C Russell	0
A Andrews	½	M Ingram	½

NE Cavaliers	1½	St Neots	2½
R Ilett	1	P Barkas	0
P Turp	0	C Emery	1
N Wedley	½	F Rock	½
M Tarabad	0	K Holditch	1

Club Championship

Round 2			
N Wedley (1)	0	1	P Hanks (½)
S Wozniak (1)	½	½	R Ilett (1)

Round 3			
P Hanks (1½)	P	P	M Tarabad (½)
R Jones (½)	P	P	P O'Gorman (1)
C Russell (1)	P	P	J Sutherland (1)
S Walker (1)	½	½	T Ingram (1)
P Weinberger (1)	P	P	D Lane (1)

Round 4			
D Lane (1+P)	P	P	P O'Gorman (1+P)
N Wedley (1)	P	P	R Jones (½+P)
P Hanks (1½+P)	P	P	P Walker (3)
R Ilett (2)	P	P	P Spencer (3)

Round 5			
P Walker (3+P)	P	P	R Ilett (2+P)
P Spencer (3+P)	P	P	P Turp (2½)
E Knox (2)	1	0	S Walker (1+P)
J Sadler (2+2P)	1	0	P Weinberger (2+P)

R Jones (½+2P)	P	P	P Hanks (1½+2P)
S Wozniak (2)	P	P	J Parker (0)
T Ingram (1+P)	P	P	P O'Gorman (1+2P)
D Lane (1+2P)	P	P	E Smith (1)
N Wedley (1+P)	0	1	J Sadler (1+2P)
Match night : 28 th November		Next draw : 1 st December	
J Sadler (1)	1	0	M Tarabad (1½+P)
J Sutherland (1½+P)			J Sadler (2)
C Russell (1½+P)			J Sadler (2+P)
To be played by mutual agreement			

New England Grand Prix

Player	Champ	Ladder	League	Cup	550 Team	Total	TPR*
P Spencer	3	2	2½		2	9½	148
R Ilett	2	3	1½	2		8½	165
P Walker	3	3	1			7	172
C Russell	1½		2½	0	1	5	122
P Weinberger	2	0			2½	4½	101
P Turp	2½		½	0	1	4	139
M Tarabad	1½	1		0	1	3½	104
J Sadler	3					3	152
P Hanks	1½	0	½	1		3	149
S Walker	1½				1½	3	89
E Knox	3					3	112
S Wozniak	2				1	3	107
T Ingram	1½	1				2½	93
J Sutherland	1½				1	2½	116
D Lane	1	0			1	2	116
N Wedley	1			½		1½	91
P O'Gorman	1	0				1	74
J Parker	0	0			1	1	59
E Smith	1				0	1	48
J Dille			1			1	205
R Jones	½					½	90
M Ingram				½		½	91

* Tournament Performance Rating is approximate

Match of the Month

Peter raised his grade from 98 to 111 last season on the back of an excellent performance in the Team 550 competition. His attacking powers were showcased in the last newsletter and hark back to the romantic era of chess. I knew this would be a difficult pairing with a sharp open game.

P Weinberger v M Tarabad

NE Patriots v NE Cavaliers, 19.09.2018

1	e4	Nc6
----------	-----------	------------

The Nimzovich Defence is rare at grandmaster level but even the World Champion has given it a try. After 2 Nf3 d6 3 d4 Nf6 4 d5 Nb8 (Kasimdzhanov v Carlsen, Douglas 2017), the game was eventually drawn but White generated a lot of pressure.

2	f4	d6
3	Nf3	Bg4
4	Bc4	h6

What's this? It will be several moves before White can play Bc1-g5 or Nf3-g5. The move therefore does not deprive White of active squares and for preference, either 4 ... e5 or 4 ... Nf6 would contest the centre.

5	0-0	
----------	------------	--

Surprisingly, for the next few moves, both sides trot out the computer's first choice or a near-optimal alternative.

5	...	Nd4
6	c3	Nxf3+
7	gxf3	Bd7
8	Qb3	e6
9	f5	

Even here, this is approved by Fritz though, it judges central control by 9 d4 as equivalent.

9	...	d5
----------	------------	-----------

Fritz gives two options : 9 ... Qc8 looks too passive for club chess so 9 ... Qg5+ 10 Kh1 0-0-0 11 fxe6 fxe6 12 Bxe6 Nf6 was more likely.

10	exd5	
-----------	-------------	--

White correctly rejects 10 fxe6. Direct captures look good for White (10 ... dxc4 11 exd7+ Qxd7 12 Qxb7) but as Black achieves the activity desired after 10 ... Bxe6 11 exd5 Qg5+ 12 Kh1 Bh3 13 Rg1 Qh5, exchanges become inevitable with 11 Bxd5 Bxd5 12 Qxd5 Qxd5 13 exd5 Nf6.

10	...	Qg5+
11	Kh1	Qxf5
12	Qxb7	Rd8
13	d4	

Not 13 Qxc7?? Rc8.

13	...	Bd6
14	dxex6	fxex6
15	f4	

The text move is the source of White's problems. It opens the long diagonal and fails to bring the queenside pieces into play. With 15 Nd2, White would start to concentrate more force to assault Black's uncastled king.

15	...	Ne7
16	Qg2	

White has to avoid trouble along the diagonal. Unfortunately, 16 Kg1 Bc6 17 Qb3 will not do. 17 ... Qg4+ looks tempting because there is a stylish checkmate by 18 Kf2 Qg2+ 19 Ke3 Nf5+ 20 Kd3 Be4# but 19 Ke1 0-0 gives Black the much superior

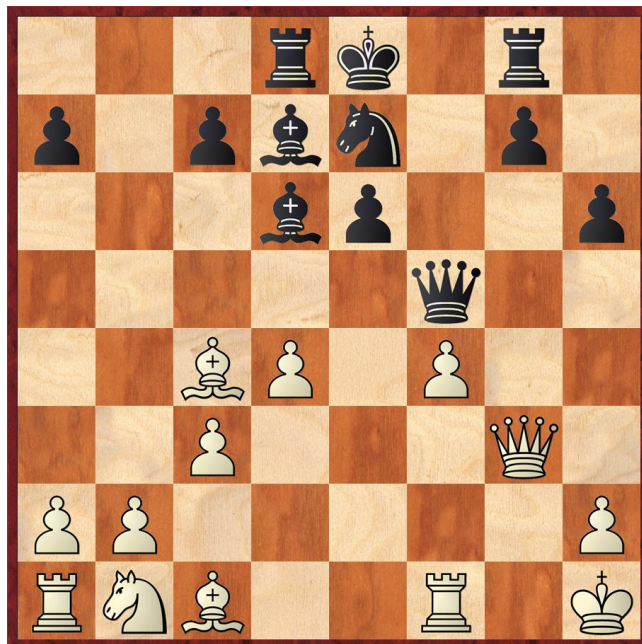
position but no immediate win. Instead, 17 ... Qe4 18 Kf2 0-0 with a massive attack.

16	...	Rg8
-----------	------------	------------

16 ... Bc6 would win the exchange after 17 Rf3.

17	Qg3	
-----------	------------	--

White could block the diagonal and develop with 17 Nd2 Bc6 18 Nf3 and could even remove the threat on the light squares by 17 a4 Bc6 18 Bb5.



17	...	Bc6+
-----------	------------	-------------

The pawn of f4 is currently pinned in two directions. I should probably have played 17 ... g5 immediately.

18	Kg1	g5
19	Bd3	

Due to my 17th move, the white king now protects the rook. White could have given up a small amount of material by 19 fxe6 Qxf1+ 20 Kxf1 Bxg3 21 hxg3 hxg5 and quashed the attack. Without 17 ... Bc6+, this option would not have been possible.

19	...	Qd5
-----------	------------	------------

19 ... Qf7 would have been hard to meet.

20	Qf3	
-----------	------------	--

White needs to flee. 20 Kf2 gxf4 21 Qh3 Rg2+ 22 Ke1 looks fantastic and most of us would be happy to reach this position. How do Black's pieces penetrate?

20	...	gxf4+
21	Kh1	

It is too late for 21 Kf2 Qxf3+ 22 Ke1 Qxd3 with mate starting Rg8-g2.

21	...	Qxf3+
22	Rxf3	Bxf3#

Mahmoud Tarabad