

# New Englander

## Chess Club Update – January 2019

### Chairman's Chatter

Happy New Year! I hope you enjoyed the festivities and are making resolutions about improving your chess and playing more for the remainder of the season.

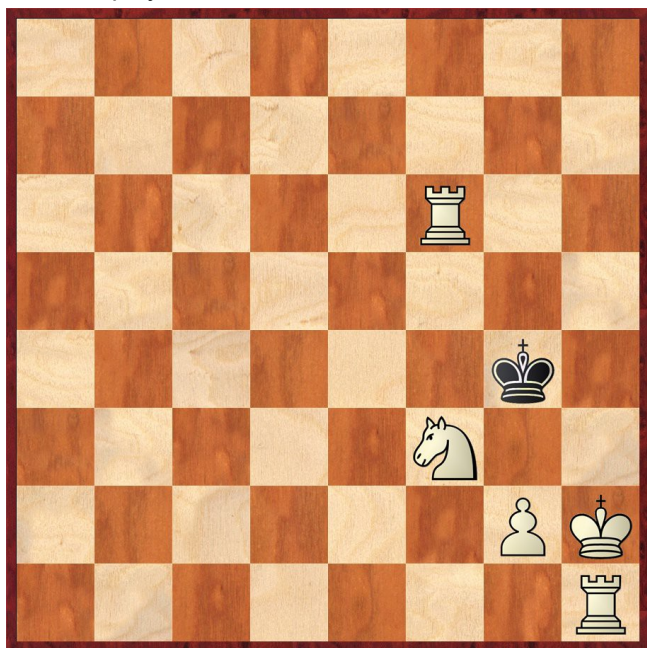
*Paul Hanks*

### Diary Dates

- 30<sup>th</sup> January Club Rapidplay. In view of match and championship postponements, the date of this event may change to ease fixture congestion. Please look out for warning emails.
- 27<sup>th</sup> February Probable date of the Fenland 550 Plate semi-final Patriots v Cambridge. Please note this will clash with Round 7 of the Club Championship.

### Puzzle Problem

White to play and mate in 2



Last Month's solution (Lazard)

Position : 8/8/8/6p1/8/6Bk/4BK2/8

1 Bf3 g4 2 Bg2#

### Website to Watch

In the light of my last two recommendations, I hope to see some decisive games in January! From 12<sup>th</sup> to 27<sup>th</sup>, the Tata Steel Masters takes place mostly in Wijk aan Zee but two rounds go on tour to Alkmaar and Leiden. To view, please see [www.tatasteelchess.com](http://www.tatasteelchess.com) but entry is free at the venues.

### Result Round-up

#### New England Club Ladder

White		Black	
N Wedley	0	1	P Walker
P Spencer	1	0	E Smith

Position	Change		Player	Record @ 19/12/18
	Month	Overall		
1	+5	+2	P Walker	½,1,½,1,0,1
2	-	-	J Parker	0,0
3	-2	+7	N Wedley	0,1,0
4	-1	+4	R Ilett	1,1,1
5	-1	-4	P Spencer	1,½,½,1
6	-1	-2	T Ingram	0,1
7	-	-1	M Tarabad	1,0,1,1
8	+3	+3	E Smith	0,0
9	-1	-4	P Hanks	0
10	-1	-1	D Lane	0,1,0
11	-1	-4	P O'Gorman	0
12	-	-	P Weinberger	0

#### Cambridgeshire County Chess Leagues

Cambridge	4½	New England A	½
A Bigg	½	J Dillely	½
B Buisman	1	R Ilett	0
R McCorry	1	P Hanks	0
N Hutchinson	1	C Russell	0
S Jeffreys	1	P Weinberger	0

Peterborough B	2	New England B	2
S Caraway	1	P Spencer	0
M Dunkley	1	C Russell	0
G Waterman	0	P Weinberger	1
L Howland	0	S Walker	1

New England B	P	St Neots B	P
Re-arranged for 17 <sup>th</sup> April 2019			

Spalding	P	New England B	P
----------	---	---------------	---

### Team 550 Competition

Warboys	1½	NE Cavaliers	2½
B Duff	0	R Ilett	1
J Beck	0	P Hanks	1
M Onyons	½	M Tarabad	½
D Polehonski	1	E Knox	0

NE Cavaliers	P	Godmanchester	P
--------------	---	---------------	---

### Club Championship

Round 3			
P Hanks (1½)	P	P	M Tarabad (½)
R Jones (½)	P	P	P O'Gorman (1)
C Russell (1)	P	P	J Sutherland (1)
P Weinberger (1)	P	P	D Lane (1)

Round 4			
D Lane (1+P)	P	P	P O'Gorman (1+P)
N Wedley (1)	P	P	R Jones (½+P)
P Hanks (1½+P)	P	P	P Walker (3)
R Ilett (2)	P	P	P Spencer (3)

Round 5			
P Walker (3+P)	P	P	R Ilett (2+P)
P Spencer (3+P)	P	P	P Turp (2½)
R Jones (½+2P)	P	P	P Hanks (1½+2P)
S Wozniak (2)	P	P	J Parker (0)
T Ingram (1+P)	P	P	P O'Gorman (1+2P)
D Lane (1+2P)	P	P	E Smith (1)
J Sutherland (1½+P)			J Sadler (2)
C Russell (1½+P)	P	P	J Sadler (2+P)
To be played by mutual agreement			

Round 6			
J Sadler (3+2P)			P Walker (3+2P)
E Knox (3)			P Spencer (3+2P)
P Turp (2½+P)			S Wozniak (2+P)
P Weinberger (2+P)			C Russell (2+2P)
R Ilett (2+2P)			J Suth'land (1½+2P)
T Ingram (1½+P)			P Hanks (1½+3P)
M Tarabad (1½+P)			N Wedley (1+P)
D Lane (1+3P)			R Jones (½+3P)
E Smith (1+P)			S Walker (1½)
J Parker (0+P)			P O'Gorman (1+3P)
Match night : 9 <sup>th</sup> January		Next draw : 1 <sup>st</sup> February	

### Christmas Special : 19<sup>th</sup> December 2018

Player		Round				
		1	2	3	4	Tot
1	P Walker	1	1	1	1	4
2	S Wozniak	0	1	1	1	3
3=	C Russell	0	1	½	1	2½
	N Wedley	1	1	½	0	2½
5=	P Hanks	1	0	-	1	2
	R Ilett	0	1	0	1	2
	E Knox	0	0	1	1	2
	I Garratt	1	1	0	0	2
10	M Tarabad	1	0	1	0	2
	B Sadler	0	0	1	0	1
	J Sadler	1	0	0	0	1
12	J Parker	0	0	0	0	0

### New England Grand Prix

Player	Champ	Ladder	League	Cup	550 Team	Total	TPR*
P Spencer	3	3	2½		2	10½	145
R Ilett	2	3	1½	2	1	9½	167
P Walker	3	4	1			8	173
P Weinberger	2	0	1		2½	5½	104
C Russell	1½		2½	0	1	5	118
P Turp	2½		½	0	1	4	139
M Tarabad	1½	1		0	1½	4	105
P Hanks	1½	0	½	1	1	4	152
S Walker	1½		1		1½	4	92
J Sadler	3					3	152
E Knox	3				0	3	102
S Wozniak	2				1	3	107
T Ingram	1½	1				2½	93
J Sutherland	1½				1	2½	116
D Lane	1	0			1	2	116
N Wedley	1			½		1½	92
J Dille			1½			1½	200
E Smith	1				0	1	48
J Parker	0	0			1	1	59
P O'Gorman	1	0				1	74
R Jones	½					½	90
M Ingram				½		½	91

\* Tournament Performance Rating is approximate

## Eye Opener

The task in round 2 of the Christmas Special was to continue play from a set opening. The line chosen from *Taming Wild Chess Openings* by J Watson and E Schiller was the Morphy Gambit in which White's speedy development gives sufficient possibilities for the sacrificed pawn. Even so, you will find it hard to find any examples from elite tournaments.

I felt we should look at a few of the options. After all, it is said that chance favours the prepared mind.

### Richardson v Delmar New York 1887

1	<b>e4</b>	<b>e5</b>
2	<b>Bc4</b>	<b>Nf6</b>
3	<b>Nf3</b>	<b>Nxe4</b>
4	<b>Nc3</b>	

This was the starting point of games in the Christmas Special. It was chosen because Black immediately has several ways to proceed.

4	...	<b>Nxf2?</b>
---	-----	--------------

Wrong but fun. If instead,

- 4 ... Nd6 is solid
  - 4 ... Nf6 is perfectly playable (and is what Steve Wozniak tried against me)
    - I thought I should blaze away with 5 d4 d6 (5 ... e4 6 Ne5 d5 would give Black an edge) missing the standard trick 6 dxe5 dxe5 7 Bxf7+ (though 7 Qxd8+ Kxd8 8 Nxe5 is stronger.)
    - 5 Nxe5 d5 leading to equality.
  - 4 ... Be7 5 Bxf7+ (5 Nxe4 d5) 5 ... Kxf7 6 Nxe5+
    - As expected, 6 ... Ke6 receives no mercy 7 d4 Nf6 (7 ... Nxc3 8 Qg4+ Kd5 (8 ... Kd6 9 Nf7+; 8 ... Kf6 9 Bg5#) 9 bxc3 b5 (otherwise 10 c4+ Kd6 11 Nf7+) 10 c4+ bxc4 11 Qf3+ Ke6 12 Qf7+ Kd6 13 Nxc4+ Kc6 14 Na5+ Kb5 (14 ... Kd6 15 Bf4#; 14 ... Kb6 15 Rb1+ Kxa5 16 Qd5+ c5 17 Qb3) 15 Qc4+ Kxa5 16 Rb1))
    - 6 ... Kg8 7 Nxe4 when White should profit from his centralisation.
  - 4 ... Nxc3 5 dxc3 f6! is surprising but probably necessary.
    - 5 ... d6 6 Ng5 Be6 7 Bxe6 fxe6 8 Qf3 Qd7 9 Qxb7 Qc6 10 Qc8+ Ke7 11 Qxe6+ Kd8 12 Nf7#
    - 5 ... Qf6 6 0-0 d6 7 Bg5 Qg6 8 Nxe5 Qxg5 (8 ... dxe5 9 Qd8#) 9 Nxf7
    - 5 ... Nc6 6 Ng5 d5 7 Bxd5 Be6 8 Nxe6 fxe6 9 Qh5+ g6 10 Bxc6+ bxc6 11 Qxe5
- 5 ... Bc5 6 Ng5 0-0 7 Qh5 h6 8 Nxf7
- |   |             |             |
|---|-------------|-------------|
| 5 | <b>Kxf2</b> | <b>Bc5+</b> |
| 6 | <b>d4</b>   | <b>exd4</b> |
| 7 | <b>Re1+</b> | <b>Kf8</b>  |
| 8 | <b>Ne4</b>  | <b>Bb6</b>  |



10 Qa3+ Kg8 11 Bxd5 Qxd5 12 Nf6+ gxf6 13 Qf8+ Kxf8 14 Bh6+ Kg8 15 Re8#

## Match of the Month

The following game was played during our first visit to Royston's new venue but it was hardly an auspicious start. The home team had forgotten to bring the key for the cupboard and were unable to access their equipment. The match did not get under way until 8.20pm and by then, the players had to forfeit 15 minutes of the time control.

### P Hanks v S Jackson

NE Patriots v Royston, Fenland Trophy, 19.11.2018

1	<b>d4</b>	<b>d5</b>
2	<b>c4</b>	

It is easy to forget that the Queen's Gambit is still a gambit! Whilst the opening often leads to slow development behind pawn barriers, I should remember that it can result in razor-sharp tactical continuations.

2	...	<b>c6</b>
---	-----	-----------

My opponent chooses the Slav Defence which has a vast body of theory. This should mean that ideally, I ought only enter it with a correspondingly larger amount of knowledge but stupidity and ignorance always were my forte.

3	<b>Nf3</b>	<b>Nf6</b>
4	<b>Nc3</b>	<b>dxc4</b>
5	<b>e4</b>	

The safest and most popular way for grandmasters is 5 a4 Bf5 6 Ne5 which appeared in three games of the Topalov v Anand world championship match in 2010.

5	...	<b>b5</b>
6	<b>Be2</b>	

With 6 Bg5 e6 7 e5 h6 8 Bh4 g5 9 Nxc5, I could have headed back to the Botvinnik Variation of the Semi-

Slav Defence but that is so crazy, even grandmasters leave it to correspondence players!

<b>6</b>	...	<b>e6</b>
<b>7</b>	<b>0-0</b>	<b>b4</b>
<b>8</b>	<b>Na4</b>	

Fritz prefers 8 e5. I belatedly realise that exchanges favour White e.g. 8 ... bxc3 9 exf6

- 9 ... Qxf6 10 bxc3 just leaves Black with a bad pawn structure and 10 ... Ba6 11 Qa4 Bb5 12 Qa5 makes Bc1-g5 a nasty threat
- 9 ... cxb2 10 fxg7 Bxg7 (if 10 ... bxa1Q 11 gxh8Q, Black has to cope with both the threat of Bc1-h6 and Qd1-c2 trapping the extra queen) 11 Bxb2 when White should recover the pawn and remain more active.

I had concentrated on 8 ... Nd5 9 Ne4 and concluded I would be unable to make progress against the strong central knight. However, as in all these variations, I should have had confidence in my pressure against Black's scattered queenside after 9 ... c3 (9 ... Ba6 10 Bd2 Be7 11 Rc1) 10 bxc3 bxc3 11 Qa4.

<b>8</b>	...	<b>Nxe4</b>
<b>9</b>	<b>Bxc4</b>	<b>Be7</b>
<b>10</b>	<b>Ne5</b>	

I felt reasonably happy at this point. I had cramped Black's development by Nb8-d7, removed the option for exchanges by Bc8-a6 and given my opponent something to think about in Qd1-f3/g4. I just needed to shore up my weakness on d4.

<b>10</b>	...	<b>0-0</b>
<b>11</b>	<b>Be3</b>	<b>Nd6</b>

This excellent move came as a surprise and gives me a difficult decision about where to retreat the bishop.

**12 Bd3**

Objectively (i.e. Fritz), there is little to choose between this and 12 Bb3. I worried about 12 ... Nf5 but saw that I need not defend the d4 pawn due to 13 ... Nxd4 14 Bxd4 Qxd4 15 Bxh7+.

<b>12</b>	...	<b>Bb7</b>
<b>13</b>	<b>Nc5</b>	

Almost the perfect position. I can obtain the bishop pair and have temporarily lifted the threat of Nd6-f5. Remember two things though. Firstly, I have several good moves to assess under a tight time control and secondly, no position is so good I can't mess it up!

<b>13</b>	...	<b>Qc8</b>
<b>14</b>	<b>Rc1</b>	

14 Bd2, 14 Qc2, 14 Qh5, 14 Qg4, 14 Qb3, ...

<b>14</b>	...	<b>Bf6</b>
<b>15</b>	<b>Qf3</b>	<b>a5</b>
<b>16</b>	<b>Qh3</b>	<b>g6</b>

I considered only this option and for once, my intuition was justified. If instead 16 ... h6, White's attack gains momentum very quickly with 17 Ng4

- 17 ... Qd8 18 Nxb7 Nxb7 19 Nxh6+
- 17 ... Nd7 18 Nxd7 Qxd7 19 Nxf6+ gxf6 20 Bxh6 with Qh3-g3/g4+ to follow

- 17 ... Be7 18 Nxh6+ gxh6 (18 ... Kh8 with a classy finish 19 Nf5+ Kg8 20 Nxe7#) 19 Bxh6 requires stronger nerves :-

- 19 ... Nf5 20 Bxf5 and 21 Qg3+
- 19 ... Bf6 leads to a standard finish 20 Qg3+ Kh8 21 Bg7+ Bxg7+ 22 Qh3+ etc.
- 19 ... f5 20 Qg3+ Kf7 21 Qg7+ Ke8 22 Rfe1 is a winning attack because e6 is indefensible but it leaves Black with numerous defensive tries.

**17 Ng4 Bg7**

If 17 ... Ne8, I had seen the general idea of penetrating with my queen on the dark squares and bringing a rook to the h file. The computer adds the details 18 Bh6 Bg7 19 Bxg7 Kxg7 (19 ... Nxg7 20 Nf6+) 20 Qh6+ Kg8 (20 ... Kh8 21 Qxf8#) 21 Rfe1 Nd7 22 Re3 Ndf6 23 Rh3 Qc7 24 Ne4 Nh5 25 Ng5 and Black will not survive.

I certainly did not see the possibility of a change of direction by 17 ... Be7 18 d5 when captures invite disaster by 18 ... exd5 19 Bd4 f6 (otherwise 20 Nh6#) 20 Rfe1 Bd8 21 Ne6. White can really have fun e.g. 21 ... Re8 (21 ... Rf7 22 Nh6+ Kh8 23 Nxf7+ Nxf7 24 Bxg6 Ng5 25 Qh6) 22 Bxg6 hxg6 23 Nh6+ Kh8 24 Nf7+ Kg8 25 Qh8+ Kxf7 26 Qg7#. As a result, the battle will move to the opening of the long diagonal with 18 ... e5 19 f4.

**18 Bh6?**

Fritz's instant reaction is 18 Nh6+ because White always seems to find a weakness in Black's defence.

- 18 ... Bxh6 19 Bxh6 when White can exploit the dark squares with tempo e.g. 19 ... Rd8 (19 ... Re8 20 Qg3 Nf5 21 Bxf5 exf5 22 Qd6) 20 Bg5 Re8 21 Qh6
- 18 ... Kh8 19 Bf4 Nf5 20 Bxf5 exf5 21 Qb3 Bxh6 22 Bxh6 when the black rook is frozen because 22 ... Re8 23 Qxf7 mates.

**18 ... Bxd4**

Is this exchange sacrifice warranted? It is a practical way of snuffing out a raging attack which might continue 18 ... Bxh6 19 Qxh6

- 19 ... f5 20 Rfe1 fxd4 21 Bxg6 hxg6 22 Qxg6+ Kh8 23 Qh6+ Kg8 24 Rxe6
- 19 ... f6 20 Bxg6 hxg6 21 Qxg6+ Kh8 22 Nxf6 Rxf6 23 Qxf6+ Kg8 24 Nxe6 Qd7 25 Rc5
- 19 ... Qd8 20 Rfe1 again en route to h3.

I told you to expect gambit play!

**19 Bxf8?**

And it works! Before 18 ... Bxd4, I had been threatening 19 Bxg7 Kxg7 20 Qh6+ Kh8 21 Nf6 mating. I should keep my powder dry as this combination prevents the bishop from returning to g7. With 19 Rfd1, White hopes to run the only defensive black piece out of safe squares.

- 19 ... Bg7 20 Bxg7 f5 21 Qh6 fxd4 22 Bxg6 hxg6 23 Be5 Qc7 24 Qxg6+

- 19 ... Bxb2 20 Rc2 Bc3 21 Rxc3 bxc3 22 Nf6+ Kh8 23 Bc1
  - 23 ... Kg7 24 Qh6+ Kxf6 25 Bg5+ Ke5 26 Bc2 Ne4 27 f4+ Kf5 28 Qh3#
  - 23 ... h5 24 Qe3 Nf5 (24 ... Kg7 25 Qh6+ Kxf6 26 Bg5+ Ke5 27 Qg7+ f6 28 Bxg6 and 29 f4# cannot be stopped) 25 Bxf5 gxf5 26 Qh6#
- 19 ... Bxc5 20 Nf6+ Kh8 21 Bd2 Kg7 22 Qh6+ Kxf6 23 Bg5+ Ke5 24 Rxc5+ Kd4 25 Be3#

19 ... Qxf8  
20 Nxb7?

Another step in the wrong direction. The correct course continues to be head-spinning although I had seen 20 Nh6+ Kg7 21 Nxf7 Kxf7 (21 ... Nxf7?? 22 Nxe6+; 21 ... Qxf7 22 Nxe6+ and 23 Nxd4) 22 Nxe6 Qh8 (22 ... Bc8 23 Qf6+) but then what? Fritz tells me that after 23 Nxd4 Qxd4 24 Rfd1, Black's exposed king and lack of co-ordination give me a real advantage but this is hard to visualise over the board.

But then, of course, there is also 20 ... Kh8. I could not see the way forward and not surprisingly missed 21 Bxg6 fxf6 (21 ... hxg6 is suicidal 22 Nxf7+ Kg8 23 Nh6+ Kh7 (23 ... Kg7 24 Nxe6+) 24 Ng4+ Kg8 25 Nxe6 Qe7 26 Nxd4) 22 Nxe6 Qf6 23 Nxd4 Qxd4 24 Rcd1 Qf4 25 Rxd6 Qxd6 26 Nf7+. Even if I had the time or mental ability, there was a chance of overlooking a defensive resource such as 22 ... Bc8 23 Qd3 Bxe6 24 Qxd4+ Qg7 25 Qxd6 when I still emerge with an extra exchange.

20 ... Nxb7  
21 Be4?

I no longer have any advantage and this is another poor move. Fortunately, the refutation is not simple and my opponent was approaching the time control.

21 ... Bxb2

Can you see that my knight is trapped after 21 ... f5 22 Nh6+ Kh8 23 Bxc6 Nxc6 24 Rxc6 Bg7? I can fight on with 25 Rc7 Nd6 26 Qe3 Bxh6 27 Qe5+ Bg7 (27 ... Kg8 28 Qxe6+ Nf7) 28 Rxc7 Qxc7 29 Qxd6 Qxb2 but it will be an uphill struggle.

22 Rc2?

Another ? - the needle is stuck! I failed to spot the fork as a sting in the tail of the obvious continuation 22 Bxc6 Bxc1 23 Bxb7 Ra7 24 Nf6+ Kg7 25 Qxh7+ Kxf6 26 Qh4+ Kg7/g5/Bg5 27 Qd4+ and if 26 ... Kf5 27 Qe4+ Kg5 28 Rxc1. Black has to opt for 22 ... Nxc6 23 Rxc6 with rough equality.

22 ... Bc3  
23 Rd1?

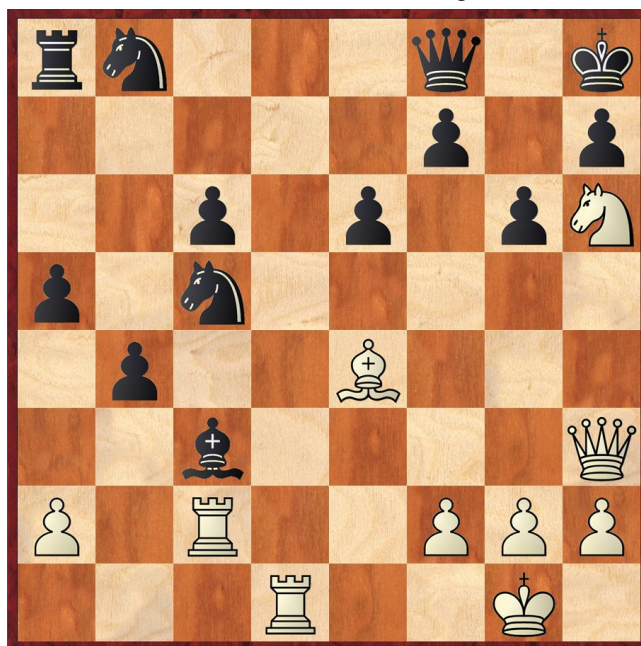
I must be going for the record! Another mistake because White can rekindle the assault with 23 Rxc3 bxc3 24 Rb1 when there are plenty of dangers ahead for Black such as 24 ... Nd6 (24 ... Qe7 25 Qxc3) 25 Nf6+ Kg7 26 Qxc3 Nxe4 27 Nxe4+ Kg8 28 Nf6+ Kh8 29 Nd7+ winning a piece on b8.

23 ... Nc5  
24 Nh6+?

I doubt if anyone has read this far – you should have given up in disgust. I could almost transpose into the last note by 24 Rxc3 bxc3 25 Nf6+ Kg7 26 Qxc3. Becoming desperate, I am playing for a cheap trap.

24 ... Kh8

50-50 but it should have been 24 ... Kg7.



25 Rd8

There is no justice in chess.

25 ... Qxd8  
26 Nxf7+ Kg7  
27 Nxd8 Nxe4  
28 Qxe6 Nf6  
29 Qf7+ Kh6  
30 Qb7 1-0

I have worn out the question mark key. Checkmate follows 30 Rxc3 bxc3 (30 ... Nh5 31 Rh3) 31 Qxf6 Kh5 32 Ne6 h6 33 Qf3+ Kh4 34 Qh3#.

After such a pathetic performance, I have to reflect on what I could do better.

- I played a sharp variation (5 e4) without prior knowledge. I must study the theory more deeply in one of my front-line openings.
- My play from moves 5 to 18 was competent enough. However, due to the first point, I did not feel confident I had compensation for the sacrificed pawn and wasted time (probably unnecessarily) looking for ways to recapture.
- The tactical variations from move 19 arise from post-mortem analysis but show how woefully shallow my vision is at the board. Often, I sensed the correct continuation but could not delve to the depth needed for a committal evaluation. Either, I must trust my intuition or train myself to see further. Masterclasses required!
- Try not to rely on luck in future!

*Paul Hanks*