

# New Englander

## Chess Club Update – September 2019

### Chairman's Chatter

Not every newsletter comes with a government health warning. At the 42<sup>nd</sup> Peterborough Beer Festival, Nene Valley Brewery combined with home-brew champion Andy Donovan to produce a special pint called "A New England". In the interests of research on your behalf, you understand, I felt compelled to sample a drop but sad to say, some other like-minded club members had obviously been before me and drunk the barrel dry. So, Drink Responsibly!

The new season is upon us with two rounds of the club championship preceding the start of league matches. Maybe a good time to remind you all to renew subscriptions to the club and the English Chess Federation? Enjoy the chess!

*Paul Hanks*

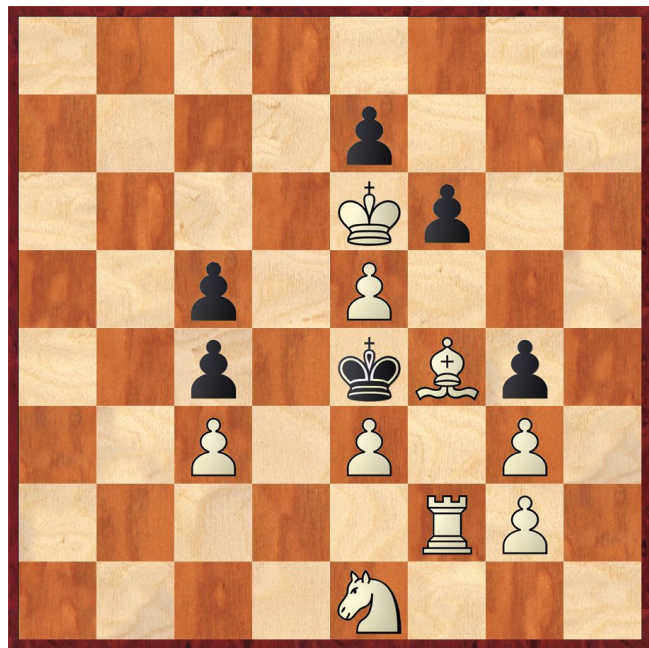
### Diary Dates

29<sup>th</sup> September Cambridgeshire Rapidplay from 10am to 6pm at Whittlesford Memorial Hall, CB22 4NE. Please see <http://www.cambschess.co.uk/> for the entry form.

The club fixture list for 2019-20 is attached.

### Puzzle Problem

White to play and mate in 3



Last Month's solution (Kardos 1978)

Position : 3K4/3bP3/2Pk4/8/2Q2P2/8/8/8

1 c7 Be8/a4 2 c8N# [1 ... Bc8/h3 2 e8N#]

### Website to Watch

The big event in September is the FIDE World Cup knock-out tournament being held in its traditional home of Khanty-Mansiysk, Russia. It runs from 10<sup>th</sup> September to 4<sup>th</sup> October (if tie-breaks are needed in the final) and details can be found on the website <https://khantymansiysk2019.fide.com/en/live/>.

### Result Round-up

CCCA Jamboree : Godmanchester 29<sup>th</sup> August 2019

Round	White on odd boards		Black on odd boards	
	1	St Neots	2	2
	Godmanchester	1	3	New England B
2	Linton	3½	½	New England A
	New England B	3½	½	St Neots
3	New England A	1½	2½	New England B

Pos'n	Team	Cumulative Score		
		Rd 1	Rd 2	Rd 3
1=	Linton	3	6½	10½
	Royston	4	7	10½
3=	New England B	3	6½	9
	Peterborough A	1	5	9
5	New England A	2	2½	4
6	St Neots	2	2½	3
7	Godmanchester	1	2	2
8	Peterborough B	0	0	0

### Chairman's Challenge

White		Black	
A Bhattacharyya	P	P	E Smith
S Wozniak			A Bhattacharyya

Player	AB	ES	SW	MT	NW	NF	JS	Tot
A Bhattacharyya	X	P						
E Smith	P	X						
S Wozniak			X					
M Tarabad				X				
N Wedley					X			
N Foreman						X		
J Sutherland							X	

## Club Championship

Round 1			
S Wozniak	1	0	P Weinberger
P Turp	1	0	D Lane
R Jones	1	0	N Wedley
S Walker	½	½	C Russell
T Ingram	0	1	P Spencer
N Foreman	<b>P</b>	<b>P</b>	P Hanks
J Sutherland	<b>P</b>	<b>P</b>	R Ilett
E Knox	<b>P</b>	<b>P</b>	M Tarabad

Round 2			
N Wedley (0)	<b>P</b>	<b>P</b>	P Weinberger (0)
M Tarabad ( <b>P</b> )	<b>P</b>	<b>P</b>	P Hanks ( <b>P</b> )
E Smith ( <b>P</b> )			S Walker (½)
D Lane (0)			N Foreman ( <b>P</b> )
R Ilett ( <b>P</b> )			R Jones (1)
C Russell (½)			P Turp (1)
J Sutherland ( <b>P</b> )			T Ingram (0)
P Spencer (1)			E Knox ( <b>P</b> )
Match night : 4 <sup>th</sup> September		Deadline : 25 <sup>th</sup> September	
Next draw : 1 <sup>st</sup> October			

## New England Grand Prix

Player	Champ	Ladder	League	Cup	550 Team	Total	TPR*
P Spencer	1	1				2	154
S Wozniak	1					1	155
R Jones	1					1	154
P Turp	1					1	149
J Sadler		½				½	108
M Tarabad		½				½	128
S Walker	½					½	123
C Russell	½					½	100
N Wedley	0					0	67
D Lane	0					0	80
T Ingram	0					0	69
P Weinberger	0	0				0	76

\* Tournament Performance Rating is approximate

## New England Club Ladder

Position	Change		Player	Record @ 28/08/19
	Month	Overall		
1			P Spencer	1
2			P Weinberger	0
3			M Tarabad	½
4			J Sadler	½

## Match of the Month

I have a book by former World Champion Karpov called *Learn from your Defeats*. In actual fact, it is one of the few things I have ever won in a raffle but that is another story... I had high hopes that the grandmaster would use his forensic skills to dissect his failures, discover the flaw in his chess understanding and give an example of how his self-improvement led to a subsequent success. Not a bit of it! Certainly, it gives his defeats but follows each with an unrelated victory against the same opponent. It is more an exercise in retribution rather than enlightenment.

As it happens, during the past season, I had the opportunity to demonstrate my ideal scenario. Read on, Anatoly! First, let's look at the defeat.

### P Hanks v P Kemp

New England A v Royston, 07.11.2018

1	<b>d4</b>	<b>d5</b>
2	<b>c4</b>	<b>c6</b>
3	<b>Nc3</b>	<b>Nf6</b>
4	<b>Nf3</b>	<b>e6</b>
5	<b>Bg5</b>	<b>h6</b>
6	<b>Bh4</b>	

I had no intention of following the safe but insipid option 6 Bxf6 Qxf6 7 e3.

6	...	<b>dxc4</b>
7	<b>e4</b>	<b>g5</b>

Here is the last chance at transposition into the Botvinnik System (normally starting 5 ... dxc4) by 7 ... b5 8 e5 but that is even more chaotic! The same opponents went for this variation in the County Championship final in 1986 and a subsequent grandmaster game (Iljin (2538) v Pavasovic (2567), Dresden 2007) unwittingly followed us for 14 moves before, according to Fritz, being unable to match the quality of our play! Later timid play robbed me of a deserved advantage and I did not propose to make the same mistake again.

8	<b>Bg3</b>	<b>b5</b>
---	------------	-----------

Paul and I have played many times and have reached this position before! In 1999, Paul was playing for St Neots and the game continued 9 Ne5 Bb7 10 Qf3 Nbd7 11 h4 g4 12 Nxg4 Nxg4 13 Qxg4 resulting in my only success against him – despite the dubious opening! Most grandmaster practice dates from 2008 and shows that I lost a whole tempo compared with 10 h4 g4 11 Nxg4 Nxg4 12 Qxg4.

**9 Be2 Bb7**

So far, there is little need for analysis – the moves are all standard theory of the Moscow System in the Semi-Slav Defence to the Queen's Gambit. It is an aggressive approach as required by the situation. White's aim is to provoke Black into pawn moves which will leave him with a development deficit and with no safe haven for his king. My opponent has wisely decided not to play along even further with 9 ... b4 10 Na4 Nxe4. The problem for both sides is ... spoiler alert! ... that active play engulfs the whole board and tests your tactical ability to, and perhaps beyond, the limit.

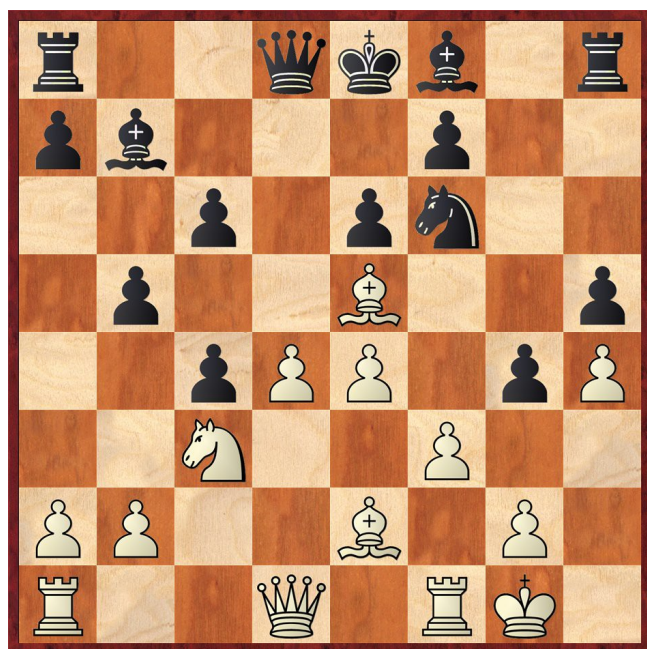
**10 h4**

This continuation is attributed to the game Khalifman v Dreev, Elista 1998 which spurred interest in the variation for the following decade until computers put a dampener on such sharp openings.

<b>10</b>	<b>...</b>	<b>g4</b>
<b>11</b>	<b>Ne5</b>	<b>h5</b>
<b>12</b>	<b>0-0</b>	<b>Nbd7</b>
<b>13</b>	<b>f3</b>	

The main line is 13 Qc2. Until now, play had been fairly rapid as it had proceeded along predictable lines with 11 .. Rg8 or 11 ... Nbd7 as the only fashionable alternatives for Black. Coming to the end of my knowledge, I wanted to open some attacking avenues and opted for this rarer move. I envisaged opening the f file with pressure against f7 or the knight on f6 which would be pinned on the e5-h8 diagonal in the event of exchanges on e5. Little did I know that I was following in the footsteps of Gary Kasparov in one of the last games of his illustrious career (Kasparov v Dreev, Moscow 2004). The only change was that the great man tried my idea on move 12 - with differences we shall shortly see.

<b>13</b>	<b>...</b>	<b>Nxe5</b>
<b>14</b>	<b>Bxe5</b>	



<b>14</b>	<b>...</b>	<b>Nd7</b>
-----------	------------	------------

Didn't you hear me? I said the knight was pinned!!

Theoretician Igor Stohl recommends 14 ... Rg8 15 fxg4 Nxg4 16 Bxg4 hxg4 (Khenkin v Godena, Arco 1998) when Black is perfectly happy. Did he not notice Paul's stunning move?

This would be strange because Stohl analysed the above Kasparov game which went 12 f3 Nbd7 13 fxg4 hxg4 14 0-0 Nxe5 15 Bxe5 Nd7 i.e. our position with an exchange of pawns on g4. In that case, Black's move is a genuine exchange sacrifice after 16 Bxh8 Qxh4 17 Bxg4 Qxh8.

**15 Bg3**

The question was "Can I get away with 15 Bxh8?" Kasparov was as surprised as I was but he was lucky (ahem!) because he could eliminate Black's advanced g pawn after grabbing the black rook. I do not get that opportunity due to 15 ... g3 and then, how do I escape checkmate starting 16 ... Qxh4?

Dismissing 16 Be5 and 17 Bxg3 due to 16 ... Nxe5, I realised it is going to take extreme measures to free the f1 and e2 squares e.g. 16 Bxc4 Qxh4 and with post-mortem computer help,

- 17 Re1 Qh2+ 18 Kf1 Qh1+ 19 Ke2 Qxg2+ 20 Ke3 Qf2+ 21 Kd3 bxc4+ 22 Kxc4 Ba6+ 23 Kb3 (23 Nb5 Qxb2 24 a4 cxb5+ 25 Kd3 (25 axb5 Bxb5#) 25 ... bxa4+ 26 Ke3 Qf2+ 27 Kf4 Bh6#) 23 ... Rb8+ 24 Ka4 Qxb2
- 17 Rf2 gxf2+ 18 Kf1 bxc4

and neither can the bishop sit still viz 15 fxg4 Nxe5 16 dxe5 Bc5+ 17 Rf2 (17 Kh1 Qxh4#) 17 ... Qxh4 18 Qe1 hxg4. In every version, I am being taught a lesson in the danger of an attacking queen with an advanced pawn

<b>15</b>	<b>...</b>	<b>Be7</b>
<b>16</b>	<b>Qe1</b>	<b>Nf8</b>

Black has found a slow but seemingly unstoppable plan of winning the pawn on h4 when 16 ... b4, 16 ... Qb6 or 16 ... gxf3 were also viable. Worse still, it starts to make White's development make sense.

**17 Rd1**

The menace on the f file could materialise quicker with 17 Qf2 Rh7 18 fxg4 hxg4 19 h5.

<b>17</b>	<b>...</b>	<b>Ng6</b>
<b>18</b>	<b>fxg4</b>	<b>hxg4</b>

The speed with which the tide has turned is highlighted by 18 ... Bxh4 19 gxh5 Bxg3 20 Qxg3 Nf8 21 Rxf7 Kxf7 22 Rf1+ Ke8 (22 ... Qf6 23 Qc7+; 22 ... Ke7 23 Qg7+ Kd6 24 e5#) 23 Qg7; or 18 ... Nxh4 19 gxh5 and Black must guard against 20 Rf4 amongst other threats.

<b>19</b>	<b>Qf2</b>	<b>Rh7</b>
<b>20</b>	<b>h5</b>	<b>Nf8</b>
<b>21</b>	<b>Bxg4</b>	<b>Qb6</b>
<b>22</b>	<b>Qf4</b>	

My move was designed to deter castling but 22 Bh4 Bxh4 23 Qxh4 would have been more effective.

<b>22</b>	<b>...</b>	<b>0-0-0</b>
<b>23</b>	<b>Qb8+</b>	

This is where I lose interest in the game. At worst, I could see a respectable perpetual check ahead. I worried unnecessarily about 23 ... Bd6 because I did not want to play e4-e5. My fear was that my attack needed to open the centre with d4-d5 at some point and that would need support from a pawn on e4.

The point is I should have discerned the black queen is overloaded. She needs to prevent mate on c7 and protect the bishop on b7 after Qf4-b8+. I can exploit this by taking a view of the whole board and playing 23 a4! The tactics are so simple :-

- Both 23 ... b4 24 a5 and 23 ... bxa4 24 Nxa4 allow 24 ... Qa5 (24 ... Qa6 25 Qc7#) 25 Qb8+ Kd7 26 Qxb7 etc
- 23 ... Nd7 (to cover b8) 24 axb5 cxb5 25 Nxb5 and, to add insult to injury, threatening 26 Nxa7+.

I needed to confront my paranoia because 23 ... Bd6 24 e5 Bc7 25 Bh4 Rd7 26 Bf2 gives me plenty of momentum including the possibility of d4-d5.

<b>23</b>	...	<b>Kd7</b>
<b>24</b>	<b>Qe5</b>	<b>Ke8</b>

Here, I anticipated 24 ... Kc8 25 Qb8+ with a draw not noticing I have 25 Rxf7 Rxf7 26 Bxe6+ Nxe6 (26 ... Nd7 27.Qb8#) 27 Qxe6+ Rd7 28 Qxf7.

<b>25</b>	<b>Qc7</b>
-----------	------------

Rubbish! With the initiative, I should not be trading queens. Obviously, I have lost the thread of the game.

I must have overvalued my open file and failed to consider 25 Bf2 when 25 ... Bd6 is still a mirage due to 26 Qg5 Be7 27 Qg8. Black remains in danger – his king is in the centre, the rook on h7 might become trapped, White has a passed pawn, a strong centre and better co-ordination. I quickly tried a continuation to demonstrate 25 ... b4 26 Na4 Qb5 27 Nc5

- 27 ... Bd6 28 Qg5 Be7 29 Qf4 Bd6 30 e5 Be7 31 Bf3 Nd7 32 Be4 Rg7 33 h6
- 27 ... Bxc5 28 dxc5 Rxd1 (28 ... Nd7 29 Bh4 Rc8 30 Rxd7) 29 Rxd1 Nd7 30 Bh4 f6 (30 ... Qxc5+ 31 Qxc5 Nxc5 32 Rd8#) 31 Qxe6+ Kf8 32 Rxd7

Black is best advised not to be too active e.g. 25 ... Qa5 26 a3. Any open lines will favour White who must have the patience to go on probing.

<b>25</b>	...	<b>Nd7</b>
<b>26</b>	<b>Qxb6</b>	<b>axb6</b>
<b>27</b>	<b>e5</b>	<b>b4</b>
<b>28</b>	<b>Ne4</b>	<b>Ra8</b>
<b>29</b>	<b>Ra1</b>	

White has lost the will to fight. There is life in the game yet after 29 Bf3 if Black accepts the offer with 29 ... Rxa2 30 Ra1

- 30 ... Rxb2 31 Ra7
  - 31 ... Bc8 32 Ra8 Kd8 33 Bh4 Bxh4 34 Nd6
  - 31 ... c3 32 Rxb7 c2 33 Rc7 c5 (33 ... Nb8 34 Rc8+ Kd7 35 Rxb8 Rb1 36 Bf4 b3 37 Rxb6 b2) 34 Rc8+ Bd8 35 Bh4

- 30 ... b3 31 Nd2 b5 32 Rxa2 bxa2 33 Ra1
- 30 ... Rxa1 31 Rxa1

when White may still get something out of the game. Sometimes, you just need strong nerves.

<b>29</b>	...	<b>c5</b>	
<b>30</b>	<b>Nd2</b>	<b>b5</b>	
<b>31</b>	<b>Bf2</b>	<b>cxd4</b>	
<b>32</b>	<b>Bxd4</b>	<b>Bc5</b>	
<b>33</b>	<b>Nf3</b>	<b>Bxf3</b>	<b>0-1</b>





## New England Chess Club Fixtures 2019-20

Updated 19 Aug 2019

Club Championship		League Match			Internal Event	
H = home A = away		Fenland Trophy			County Event	
Day	Date	All Club	A	B	Patriots	Cavaliers
W	28/Aug	<b>Round 1</b>	←	←	←	←
W	04/Sep	<b>Round 2</b>	←	←	←	←
W	11/Sep	Club Ladder	↔	↔	H v Cavaliers	A v Patriots
W	18/Sep	Club Ladder	←	←	←	←
Th	19/Sep			A v Pboro B		
M	23/Sep		A v St Neots A			
W	25/Sep	<b>Rapidplay</b>	←	←	←	←
Su	29/Sep	County Rapidplay, Whittlesford				
W	02/Oct	Club Ladder	↔	↔	↔	H v Warboys WC
W	09/Oct	Club Ladder	↔	H v Spalding	←	←
W	16/Oct	<b>Round 3</b>	←	←	←	←
Th	17/Oct		A v Pboro A			
W	23/Oct	Club Ladder	↔	↔	A v Warboys WC	H v Spalding
W	30/Oct	Club Ladder	↔	A v Warboys B	←	←
M	04/Nov		A v Royston			
W	06/Nov	Club Ladder	←	←	←	←
Tu	12/Nov					A v Spalding
W	13/Nov	<b>Round 4</b>	←	←	←	←
W	20/Nov	Club Ladder	↔	A v Warboys C	←	←
W	27/Nov	Club Ladder	H v Warboys A	←	Chairman's Challenge Rd 1	
W	04/Dec	Club Ladder	↔	↔	H v Spalding	←
M	09/Dec			A v St Neots B		
W	11/Dec	<b>Round 5</b>	←	←	←	←
W	18/Dec	<b>Xmas Special</b>	Fenland Trophy Round 1 deadline			
W	25/Dec	No meeting				
W	01/Jan	No meeting				
W	08/Jan	Club Ladder	H v Cambridge	←	Chairman's Challenge Rd 2	
W	15/Jan	Club Ladder	↔	↔	A v Cavaliers	H v Patriots
W	22/Jan	Club Ladder	↔	H v Pboro B	←	←
W	29/Jan	Club Ladder	H v St Neots A	←	←	←
W	05/Feb	Club Ladder	↔	↔	H v Pboro	A v Warboys WC
Tu	11/Feb			A v Spalding		
W	12/Feb	<b>Round 6</b>	↔	↔	←	←
W	19/Feb	Club Ladder	H v Pboro A	←	←	←
W	26/Feb	Club Ladder	↔	↔	H v Warboys WC	←
Th	27/Feb					A v Pboro
W	04/Mar	Club Ladder	↔	H v Warboys B	←	←
W	11/Mar	Club Ladder	H v Royston	←	Chairman's Challenge Rd 3	
W	18/Mar	<b>Round 7</b>	←	←	←	←
Th	19/Mar				A v Pboro	
W	25/Mar	<b>Lancaster Club AGM?</b>		H v Warboys C	←	←
W	01/Apr	Club Ladder	A v Warboys A	←	←	←
Tu	07/Apr				A v Spalding	
W	08/Apr	Club Ladder	↔	↔	←	H v Pboro
W	15/Apr	Club Ladder	↔	H v St Neots B	↔	←
W	22/Apr	Club Ladder	A v Cambridge	←	←	←
W	29/Apr	<b>Round 8</b>	Fenland Trophy semi-final deadline			
W	06/May	<b>Problem Night</b>	Fenland Trophy finals			
W	13/May	<b>Round 9</b>	←	←	←	←
W	20/May	<b>Handicap</b>	←	←	←	←
W	27/May	<b>Club AGM</b>	←	←	←	←