

New Englander

Chess Club Update – October 2019

Chairman's Chatter

The season is up and running with results pouring in. Please do not let postponements start to mount; it is only going to get busier!

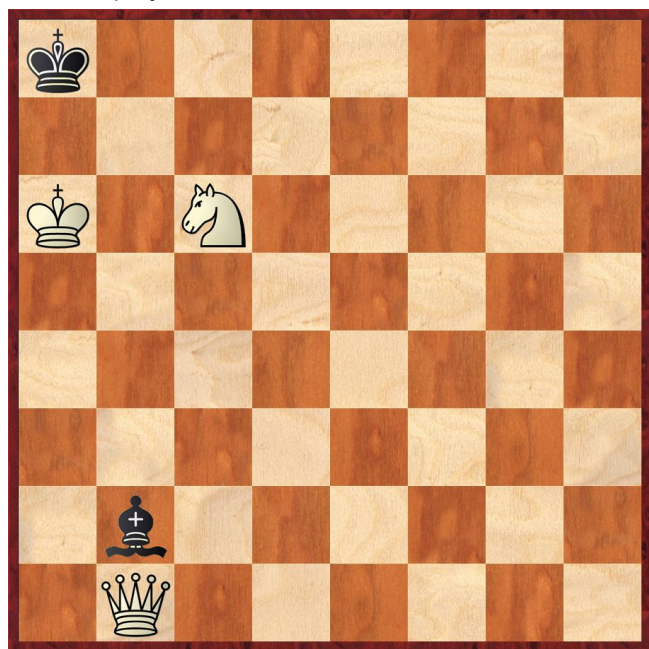
Paul Hanks

Diary Dates

23-24 Nov Cambridgeshire Championships at Pboro Bridge Club, Lincoln Rd. For the entry form, please see http://www.cambschess.co.uk/county_champ2019.pdf

Puzzle Problem

White to play and mate in 2



Last Month's solution (Myllyniemi 1952)

Position : 8/4p3/4Kp2/2p1P3/2p1KBp1/2P1P1P1/5RP1/4N3

1 Bh6 fxe5 2 Rf3 gxf3 3 gxf3# [1 ... f5 2 Re2 f4 3 exf4#]

Website to Watch

Two strong tournaments run concurrently in October so I hope there are sufficient grandmasters to go round. From 10th-16th, the European Club Cup is in Montenegro (see <http://sahcg.me/euclubcup/>) whilst nearer to home, the FIDE Chess.com Grand Swiss takes place on the Isle of Man from 10th-21st. The latter is the place to go if you want to mingle with your chess heroes. There may be no live games on the official website <https://iominternationalchess.com> but they should be available on the sponsor's website.

Result Round-up

Cambridgeshire County Chess Leagues

St Neots A	2	New England A	3
P Brown	0	J Dille	1
A Chapman	½	R Ilett	½
R Gompelman	1	P Spencer	0
P Barkas	½	C Russell	½
Default	0	M Tarabad	1

Peterborough B	½	New England B	3½
D Browning	0	R Ilett	1
A Richards	½	P Spencer	½
L Howland	0	R Jones	1
G Waterman	0	P Weinberger	1

Team 550 Competition

NE Patriots	1	NE Cavaliers	3
P Spencer	1	E Knox	0
C Russell	0	J Sadler	1
P Weinberger	0	R Jones	1
M Ingram	0	M Tarabad	1

New England Club Ladder

White		Black	
M Tarabad	0	1	J Sadler

Position	Change		Player	Record @ 25/09/19
	Month	Overall		
1	-	-	P Spencer	1
2	-	-	P Weinberger	0
3	+1	+1	J Sadler	½,1
4	-1	-1	M Tarabad	½,0

Chairman's Challenge

White		Black	
A Bhattacharyya	P	P	E Smith
A Bhattacharyya	0	1	S Wozniak
J Sutherland	16th	Oct	A Bhattacharyya

Player	AB	ES	SW	MT	NW	ANO	JS	Tot
A Bhattacharyya	X	P	0	6/11	11/12	12/2	16/10	0
E Smith	P	X	27/11	11/3	8/1	8/1	11/3	
S Wozniak	1	27/11	X	11/3	8/1	8/1	11/3	1
M Tarabad	6/11	11/3	11/3	X	27/11	27/11	8/1	
N Wedley	11/12	8/1	8/1	27/11	X	11/3	27/11	
Replacement?	12/2	8/1	8/1	27/11	11/3	X	27/11	
J Sutherland	16/10	11/3	11/3	8/1	27/11	27/11	X	

Club Championship

Round 1			
E Knox	P	P	M Tarabad
J Sutherland	P	P	R Ilett

Round 2			
P Spencer (1)	0	1	E Knox (P)
E Smith (P)	0	1	S Walker (½)
M Tarabad (P)	0	1	P Hanks (P)
J Sutherland (P)	½	½	T Ingram (0)
N Wedley (0)	½	½	P Weinberger (0)
D Lane (0)	P	P	P Hanks (1)
R Ilett (P)	P	P	R Jones (1)
C Russell (½)	P	P	P Turp (1)

Round 3			
E Knox (1+P)			R Ilett (2P)
S Wozniak (1+P)			P Turp (1+P)
P Hanks (1+P)			S Walker (1½)
R Jones (1+P)			P Spencer (1)
T Ingram (½)			N Wedley (½)
P Weinberger (½)			C Russell (½+P)
J Sutherland (½+P)	P	P	M Tarabad (0+P)
E Smith (0+P)			D Lane (0+P)
Match night : 16 th October		Deadline : 30 th October	
Next draw : 1 st November			

Club Rapidplay : 25th September 2019

Player	Round				Total
	1	2	3	4	
1 P Hanks	1	1	1	1	4
2 P Spencer	1	0	1	1	3
3= E Knox	1	1	0	0	2
	C Russell	0	1	0	1
5 M Tarabad	0	0	1	0	1
6 E Smith	0	0	0	0	0

New England Grand Prix

Player	Champ	Ladder	League	Cup	550 Team	Total	TPR*
P Spencer	1	1	½		1	3½	132
R Jones	1		1		1	3	150
J Sadler		1½			1	2½	146
R Ilett		1½				1½	181
P Weinberger	½	0	1		0	1½	87
M Tarabad	0	½			1	1½	114
S Walker	1½					1½	117
S Wozniak	1					1	155
P Turp	1					1	149
P Hanks	1					1	166
E Knox	1				0	1	142
C Russell	½	½			0	1	108
J Dilley			1			1	217
T Ingram	½					½	78
J Sutherland	½					½	79
N Wedley	½					½	86
E Smith	0					0	46
M Ingram					0	0	58
D Lane	0					0	80
A Bhattacharyya	0					0	30

* Tournament Performance Rating is approximate

Match of the Month

Last month, the Match of the Month was inspired by Karpov's book *Learn from your Defeats*. I was determined to rebound from a sad loss against Paul Kemp and as the title says, make positive use of the experience. Here is the rejoinder.

The game is taken from an important match in which the teams were nominally equal in terms of overall grade and therefore, any board on which you have a slight advantage (as here) is a must-win situation. No pressure, then!

P Hanks v S Pride

NE Patriots v Cambridge
Fenland 550 semi-final; 27.02.2019

1	d4	e6
2	c4	Bb4+
3	Bd2	a5
4	Nf3	Nf6
5	a3	

The move order may seem strange but it is a legitimate way of reaching a Bogoljubov Indian Defence, a favourite of our erstwhile top board Chris Ross. It is my choice here that is awry because grandmasters tend to prefer 5 g3 or 5 Nc3.

5	...	Bxd2+
6	Nbxd2	0-0
7	e4	

Very ambitious but slow continuations e.g. 7 e3 were not an option in this match. After initial successes against this opponent (see New Englander, November 2007), I had only managed a run of draws in recent times. Something had to change!

7	...	d6
8	Bd3	Re8
9	0-0	e5

I knew from friendly games against Chris Ross that without the possibility of a bad bishop, Black's best plan was just this solid pawn structure on the dark squares. I had found it a very difficult nut to crack.

10	Re1	Bg4
11	Qc2	Nbd7
12	dx e5	Nxe5
13	Nxe5	dx e5

My opening play has been unspectacular to say the least. Black has freer play with his pieces (look at my cramped bishop!) and I felt the need to make something of the open d file. Let me first shift that bishop covering d1...

14	f3	
----	-----------	--

Suddenly, I had to sweat. My captain will kill me! Black has 14 ... Qd4+ and is practically winning after

- 15 Kf1 Red8 16 Be2 Qxd2 17 Qxd2 Rxd2 18 fxd4 Rxb2
- 15 Kh1 Rad8 16 fxd4 Nxd4 17 Nf3 Qxd3 (17 ... Nf2+ 18 Kg1 Nh3+ 19 Kf1 (19 Kh1 Qxd3 20 Qxd3 Rxd3) 19 ... Qxd3+ 20 Qxd3 Rxd3))

It is Black exploiting the d file! In retrospect, a better plan would have been to start with 14 Nf1 and 15 Ne3.

14	...	Bd7
----	-----	------------

Phew! Now for that d file...

15	Rac1	
----	-------------	--

In my defence, the rook on e1 seems not to have any prospects on the e file. I was aiming to move it to d1.

15	...	c5
----	-----	-----------

The game is taking on a closed character in which outposts are likely to be more effective than open files. This was an immediate worry – he could exchange his bishop for my knight on d5 at leisure but thereafter, if his steed reached d4, it would be invulnerable. Thankfully, my route is rather easier.

16	Nf1	Kh8
17	Ne3	Ng8
18	Qf2	Ne7
19	Nd5	b6

I am being fortunate. Black's knight manoeuvre has denuded his isolated king and 19 ... Nxd5 20 exd5 would have gifted a passed pawn and freed my e4 square as a jumping-off point for an attack, ironically up to e file.

20	Bc2	Rb8
21	f4	Nc6

I was beginning to feel I was posing some problems. There is a whiff of an attack and maybe some tactics based on the masked pin Rc1-d1 and Bc2-a4. It is still all too easy to go wrong. Black could try 21 ... exf4 22 Qxf4 Ng6 and reasonably expect me to fall for 23 Qxf7?? Rf8 rather than 23 Qg3 Ne5 with equality even though the black knight only occupies its square of second choice.

22	f5	f6
----	-----------	-----------

This is perhaps the critical position. Can Black venture 22 ... Nd4 and allow 23 f6? The computer tells me that Black has nothing to fear but that is no comfort for the player at the board.

- Declining the offer with 23 ... Bc6 looks scary but it is unclear which side has the attack after 24 fxd4 Kxd4 (24 ... Kg8 25 Nf6+) 25 Re3 Kh8 26 Rh3 Bd7 27 Rh5 (27 Rh4 Nf3+ 28 gxf3 Qg5+ and 29 ... Qxc1) 27 ... Bg4 28 Rh4 Bf3 29 Kh1 (29 gxf3 Qg5+ etc) 29 ... Qg5.
- 23 ... gxf6 24 Re3 (24 Nxf6 Re6 25 Nd5 achieves nothing) 24 ... Rg8 (amongst others e.g. 24 ... f5 25 exf5 f6 26 Rh3 or 24 ... Re6 25 Rh3 Rd6 26 Rh6) 25 Nxf6 Rg6 26 Nd5 Qg5 and again Black is very active.

23	Re3	Ne7
24	Rh3	Nxd5
25	cx d5	Rf8
26	Bb3	Be8

If 26 ... a4, before retreating the bishop, White can explore some other avenues of attack instead of the crude Qf2-h4. 27 Qg3 axb3 (27 ... Qe8 28 Ba2 is the correct way for Black) 28 Qg6 h6 (28 ... Kg8 29 Rxh7 Qe7 30 Qh5) 29 Rxh6+ gxf6 30 Qxf6+ Kg8 31 Qg6+ Kh8 32 Rc3 mating.

27	Qh4	h6
28	Rcc3	Qd6
29	Rcg3	h5

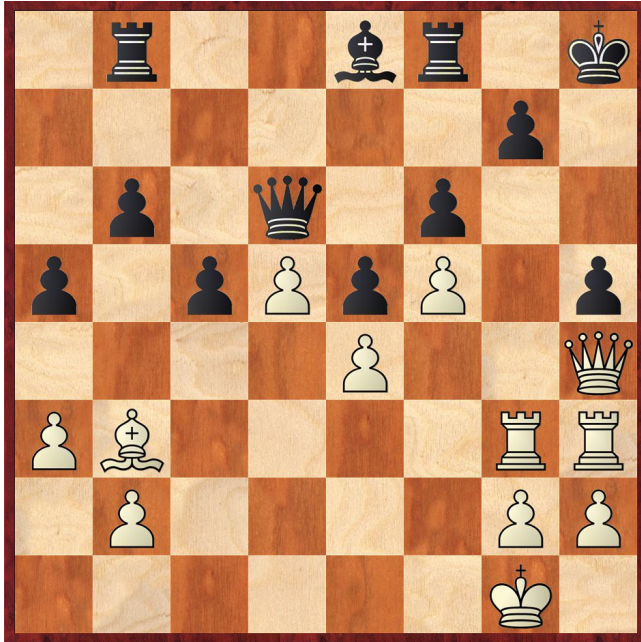
Aha! I had not thought of this simple defence to 30 Qxf6+! I had been thinking more along the lines of Black defending his second rank with

- 29 ... Rf7 30 Rxd7 Rxd7 31 Qxf6+ Kg8 when White has to bring up his reserves with 32 Bd1. Now, Fritz adds the details 32 ... Kf7 33 Bh5+ Kg8 34 Bg6 Bxg6 (34 ... Kf8 35 Bxe8) 35 Qh8+ Kf7 36 fxd4 Ke7 (36 ... Rxd7 37 Rh7+ Rg7 38 Rxd7#; 36 ... Kxd7 37 Qh5#) 37 Qxd7+ Ke8 38 Rh8+
- 29 ... Rb7 30 Rxd7 Rxd7 31 Qxf6+ Kg8 32 Bd1 is similar
- 29 ... Qd7 and I could not see how to proceed. In fact, there is time for a regrouping 30 Rg4 Rb7 31 Qe1 Qd6 32 Qe3 but it is still not decisive. Furthermore, there might be complications 31 ... c4 32 Bxc4 Rc7 33 Qe3
 - 33 ... Rg8 34 Rgh4
 - 33 ... Rf7 34 d6
 - 33 ... Rxc4 34 Rxh6+ gxf6 (34 ... Kg8 35 Qh3 Rc1+ 36 Kf2 Rc2+ 37 Kf3) 35 Qxf6+

- 33 ... Qd6 and the struggle continues.

Stephen's text move highlights White's trouble concentrating his forces on the kingside. The awkward position of the white queen makes it difficult even to sacrifice an exchange. My strategy was in tatters.

Then, I had the proverbial light bulb moment. A switch in my head brought back the memory of the game against Paul Kemp featured last month. Did he not threaten to mate me with a pawn on the sixth rank?



30 Rg6 Bb5

30 ... Bxg6 31 fxg6 Kg8 32 Qxh5 with checkmate on h8. I could smile again.

31 Qxh5+ Kg8
32 Rxg7+ 1-0

The irony is that when I played Stephen again later in the season, I lost...

Paul Hanks

Eye Opener

The gradual and solid build-up of pawns on the dark squares in the Bogoljubov Indian may suit players with a penchant for positional play. That, however, does not mean the opening is devoid of tactics. When you see a game with Bill Wall on the winning side, it usually indicates there are some simple resources that can be overwhelming with a little assistance from his opponent. Here is an example when White is rather too helpful.

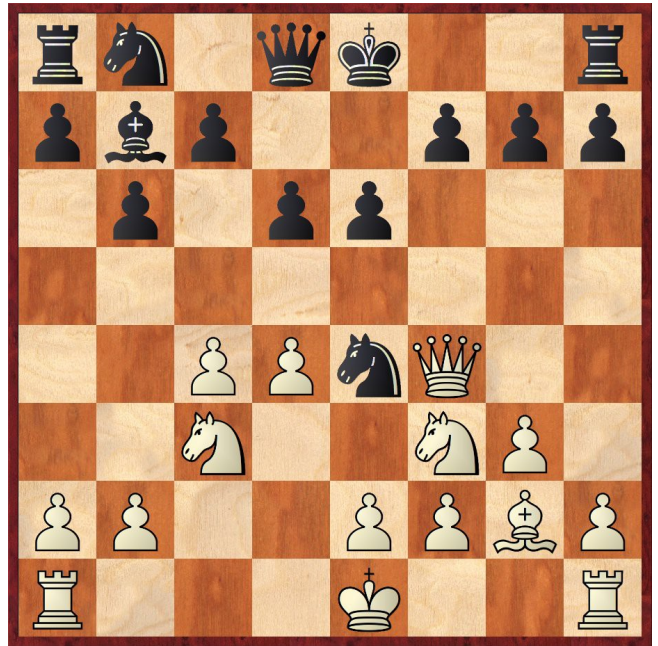
1 d4 Nf6 2 c4 e6 3 Nf3 Bb4+ 4 Nfd2 [Why? The natural 4 Bd2 and 4 Nc3 are playable.] **4 ... Ne4 5 a3** [5 e3] **5 ... Qf6 6 f3** [6 Qc2 limits the problem to the loss of a pawn.] **6 ... Qh4+** [6 ... Bxd2+ was played in Petit v Wall but allows 7 Bxd2 Qh4+ 8 g3 Nxg3 9 Bg5 Qxg5 10 Rg1] **7 g3 Nxg3 0-1**. The knight is taboo due to the threat of Fool's Mate and 8 Qb3 Nxh1+ is a hopeless material situation.

Below is a more serious case. I was taken by the development of the white queen on f4 which combines

threats to f7 and problems along the long light-squared diagonal – a theme I have not seen before.

A Becker v I Fuss
Vienna 1933

1 d4 e6 2 Nf3 Nf6 3 c4 Bb4+ 4 Bd2 Bxd2+ 5 Qxd2 b6 6 g3 Bb7 7 Bg2 d6 8 Nc3 Ne4 9 Qf4



9 ... Nxc3

This is the move White wanted to see. It is time to admit the mistake and concede tempi with 9 ... Nf6 because either

- 9 ... d5 10 Nxe4 dxe4 11 Ng5 or
- 9 ... Qf6 10 Nd2 Qxf4 11 gxf4 f5 12 Ndxe4 fxe4 13 Nxe4

lose a pawn on e4.

10 Ng5 f6
11 Bxb7

11 Nxe6 is an alternative sideline e.g. 11 ... Qc8 12 Bh3 Nd7 13 f3 when

- Black needs to return the piece with 13 ... Nxe2 with a dreadful position after 14 Kxe2 Kf7 15 Ng5+ Kf8 16 Rhe1
- rather than 13 ... Na4 when White can capture at leisure with 14 b3 Nc3 15 Kd2 or continue the attack 14 Nxg7+ Kf7 15 Nh5 etc.

11 ... fxe5
12 Qe3

12 Qf3 may be simpler and safer 12 ... Rf8 13 Qg2 Na4 14 b3.

12 ... Nd7
13 Qxe6+

13 bxc3 Rb8 is not as strong.

13 ... Kf8
14 Bxa8 Qxa8
15 f3 1-0

With both knights en prise, Black will be at least an exchange down.