

# New Englander

## Chess Club Update – March 2022

### Chairman's Chatter

Very weird... It was like boarding the *Mary Celeste* and finding the crew had fled the ship. A round of the club championship was scheduled for 16<sup>th</sup> February and that normally signals a full house in the club room. I arrived slightly early but there was no-one around. I laid out the sets. No-one. I paced up and down until the start time. No-one. I checked it really was Wednesday. No-one. What was going on?

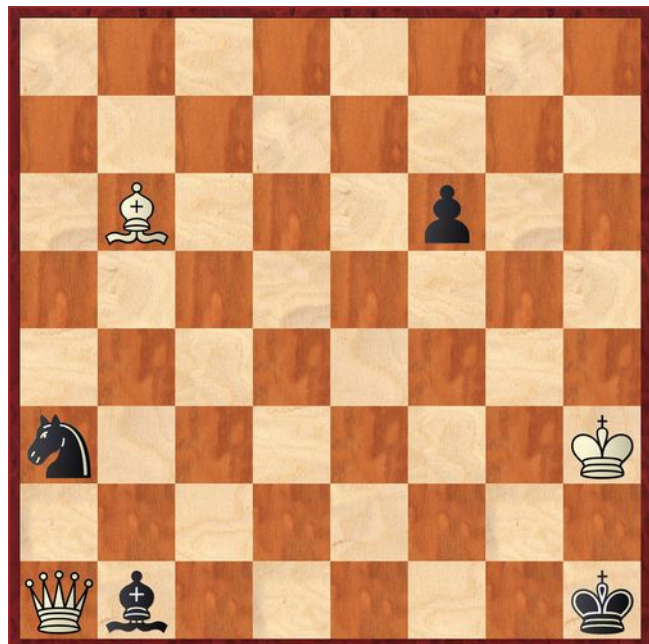
The first arrival was around 7-45 and two more drifted in well after 8 o'clock. Apparently, local roads were gridlocked and parking had become impossible. Posh, having reached the 5<sup>th</sup> round of the FA Cup and a home tie against Premier League leaders Manchester City, were giving priority for tickets to those attending the preceding league matches. We were collateral damage in the sell-out frenzy for the postponed game against Reading.

We shall have to try to arrange discretionary fixtures on such evenings in case we face embarrassment in future. Mind you, the last time Posh managed a similar cup run was 1986!

*Paul Hanks*

### Puzzle Problem

White to play and mate in 2.



Last Month's solution (Lipton 1952)

Position : 8/8/2Q5/8/8/4N2K/5pB1/5qk1

**1 Qg6 Qe2/d1 2 Bf3#** [1 ... Qc4/d3/b1 2 Be4#; 1 ... Qb5 2 Bd5#; 1 ... Qa6 2 Bc6#; 1 ... Qa1/c1/e1 2 Bf3-a8#; 1 ... Qxg2+ 2 Qxg2#]

### Website to Watch

March sees two more FIDE Grand Prix. Belgrade hosts from 1<sup>st</sup> to 14<sup>th</sup> March and from 22<sup>nd</sup> March to 4<sup>th</sup> April, the tournament reverts to Berlin. Sadly, the Chessbomb viewer is no more so the main website is <https://chessarena.com/broadcasts/> extended by the suffix 13605 for Belgrade and 13606 for Berlin.

### Diary Dates

2<sup>nd</sup> March Club Championship Round 8  
 9<sup>th</sup>/30<sup>th</sup> March Final round : A team match  
 13<sup>th</sup> April Aborted Round 7 re-arrangement  
 20<sup>th</sup> April Final round : A team match

### Result Round-up

#### Club Championship

Postponements			
C Russell (1)	Rd	3	R Jones (2)
R Jones (2+P)	Rd	4	R Ilett (3)
E Smith (1)	Rd	5	R Jones (2+2P)
P Walker (5)	1	0	R Ilett (3½+P)
P Hanks (4)	½	½	C Russell (2+P)

Round 7			
P Hanks (4½)	P	P	P Walker (6)
J Jennings (2)	P	P	R Ilett (3½+P)
C Russell (2½+P)	P	P	P Spencer (4½)
R Jones (2+3P)	P	P	P Cooper (0)
E Smith (1+P)	P	P	E Knox (3)

Round 8			
R Ilett (3½+P)			E Smith (1+P)
P Spencer (4½)			P Hanks (4½)
N Wedley (1)			C Russell (2½+P)
P Walker (6)			J Jennings (2)
E Knox (3)			R Jones (2+3P)
P Cooper (0)			P Spencer (4½) – Rd 9

Round 9			
R Jones (2+3P)			P Walker (6)
E Smith (1+P)			P Hanks (4½)
J Jennings (2)			N Wedley (1)
C Russell (2½+P)			E Knox (3)
P Cooper (0)			R Ilett (3½+P)

## Cambridgeshire League

<b>Peterborough A</b>	<b>2</b>	<b>New England A</b>	<b>3</b>
I Bin-Suhayl	1	P Walker	0
F Bowers	½	R Ilett	½
D Browning	0	P Hanks	1
C Masseron	½	P Spencer	½
M Zajackowski	0	E Knox	1

<b>New England B</b>	<b>3</b>	<b>Peterborough B</b>	<b>1</b>
P Spencer	1	C Bengtson	0
R Jones	½	M Zajackowski	½
N Wedley	½	B Rhodes	½
J Jennings	1	J Blair	0

### Team 7000

<b>Warboys WC</b>	<b>2½</b>	<b>NE Patriots</b>	<b>1½</b>
S Caraway	1	R Ilett	0
B Duff	½	P Spencer	½
P Baddeley	1	E Knox	0
J Beck	0	J Jennings	1

### Fenland Plate

<b>Warboys DM</b>	<b>1</b>	<b>NE Patriots</b>	<b>3</b>
J Beck	0	P Walker	1
N Greenwood	½	P Spencer	½
R Mann	0	E Knox	1
P Wells	½	C Russell	½

### New England Club Ladder

<b>White</b>		<b>Black</b>	
E Smith	0	1	P Hanks
P Walker	1	0	N Wedley

<b>Position</b>	<b>Change</b>		<b>Player</b>	<b>Record @ 23/02/22</b>
	<b>Month</b>	<b>Overall</b>		
1	+8	+8	P Walker	1
2	+6	+6	P Hanks	½,1
3	-2	+3	N Wedley	½,1,1,0
4	-2	-3	E Smith	1,0,0,0
5	-1	-1	J Sadler	1
6	-3	-3	J Jennings	1,0,0,½,1
7	-2	-5	P Cooper	0,0,0
8	-2	-1	R Ilett	½
9	-2	-4	C Russell	1

Please note that 5 games are required in the Ladder competition by the closing date of 1<sup>st</sup> May 2022.

Website : [www.newenglandchess.org.uk](http://www.newenglandchess.org.uk)

## New England Grand Prix

<b>Player</b>	<b>Champ</b>	<b>Ladder</b>	<b>League</b>	<b>Cup</b>	<b>7000 Team</b>	<b>Total</b>	<b>TPR*</b>
P Walker	6	1	5	2½	3	17½	2141
P Spencer	4½		6½	2½	1½	15	1796
P Hanks	4½	1½	4	2		12	1882
C Russell	2½	1	3½	½	2	9½	1640
E Knox	3		2	2½	1½	9	1614
J Jennings	2	2½	1	1	1	7½	1386
R Ilett	3½	½	3½		0	7½	1818
N Wedley	2	2½	1½	½	½	7	1458
R Jones	2		2		½	4½	1700
E Smith	1	1				2	1049
J Sadler		1				1	1750
P Cooper	0	0				0	725

\* Tournament Performance Rating is approximate

### Match of the Month

#### C Bengtson v P Spencer

Peterborough B v New England B, Bd 1; 09.02.2022

1 d4 d5  
2 Bf4

One attraction of this London System is that it can be played against almost any reply by Black. As a result, many similar move orders are possible but one example is S Tartakower v R Spielmann, Vienna 1921 when White labelled the system as "an archaic opening". Despite this, the name comes from its fashionability at the London tournament of 1922!

2 ... c5  
3 c3

There are books written on the opening but I wonder whether the text option features. Most published games first bolster d4 with 3 e3 (e.g. M Carlsen v S Mamedyarov, Online 2020) and although c2-c3 frequently follows, White has temporarily retained the flexibility to make a later transposition with c2-c4 and/or Nb1-c3.

3 ... e6  
4 Nf3 Nf6  
5 Nbd2 Nc6  
6 e3 Bd6

I have achieved easy equality with natural developing moves. In an analogous position in the game quoted above, Tartakower tried 7 Bg3 to open the h file if the bishops are swapped.

7 Bg5

A move I am not familiar with. I had a long think here and was worried about 8 e4 so I decided to take away one of the d4 pawn's defenders. This is necessary but can also be played after castling. The point is that the

pawn trade stops White from playing e4 because it creates too many weaknesses.

7 ... cxd4  
8 cxd4 0-0  
9 e4

Having made d4 a strong point, White weakens it with this move when there were routine alternatives such as 9 Be2 and 9 Rc1.

9 ... dxe4

My move contains some hidden venom but Fritz indicates that complications with 9 ... e5 are also possible. There are many continuations but the critical line is probably 10 exd5 when 10 ... Nxd4 maintains the material balance but 10 ... Re8 tries to exploit the exposed position of the white king e.g. 11 dxc6 exd4+ 12 Be2 d3. After the defence 13 Be3 dxe2 14 Qxe2, it is hard to see the advantage that the computer awards me.

10 Nxe4 Bb4+  
11 Nfd2

The retreat 11 Nc3 was necessary when I can increase pressure with 11 ... Qa5. The pawn on a2 is eventually en prise after 12 Rc1 whereas 12 Qc2 allows 12 ... Nxd4 13 Nxd4 Qxg5. Now I can pull the trigger on my planned tactic.



11 ... Nxe4

My opponent thought for a long time at this point.

12 Bxd8

I have just captured a piece and White needs to calculate whether to acquiesce instead with passive moves such as 12 Be3 or 12 a3 which actually are far worse than seeing the combination to its bitter end.

12 ... Bxd2+  
13 Qxd2

The white queen is doomed even after 13 Ke2 Nxd4+ 14 Kd3 Nxf2+. It is only a matter of keeping count of the minor pieces e.g. 15 Kxd2 Nxd1 16 Be7 Nf2 but I could also refuse her majesty with 15 ... Rxd8.

13 ... Nxd2  
14 Kxd2 Rxd8

I have an extra piece and surprisingly, a time advantage. Converting the win is relatively straightforward...

15 Bd3 e5  
16 Rhe1 Be6  
17 a3 Rxd4  
18 Ke3 Rad8  
19 Bc2 Rd2  
20 Rac1 f5  
21 g3 f4+

I have followed the computer recommendation fairly closely but here, the suggestion is 21 ... Na5 with the threat 22 ... Nc4+ 23 Kf3 Bd5+. The white king can try to run away with 22 g4 Nc4+ 23 Kf3 Bd5+ 24 Kg3 but is hardly likely to survive long after 24 ... f4+ 25 Kh4 Rxf2. I had looked at the Na5 alternative but thought 21 ... f4 was a winning move. I had miscalculated and in my head, I had made an extra move for Black somewhere.

22 gxf4 exf4+  
23 Kxf4 Rxf2+  
24 Kg3 Rf6

I had completely missed the threat 25 Rxe6 Rxe6 26 Bb3 but thankfully, Black is in no trouble and can defend rook on e6 as well as the better move which I missed initially 25 ... Rd3+ winning the bishop.

The computer points out a counter-attack with 24 ... Rdd2 when 25 Rxe6 would run into an eventual knight fork e.g. 25 ... Rg2+ 26 Kf4 g5+ 27 Ke3 Rge2+ 28 Kf3 Nd4+. There are several variations that come to the same conclusion but the line is too complex to risk in practical play when I have already secured a winning advantage.

25 Be4 Bd5  
26 Rcd1 Bxe4  
27 Rxd8+ Nxd8  
28 Rxe4 Nc6  
29 h4 Kf7  
30 a4 h5  
31 b4 Rg6+  
32 Kh3 Rg4  
33 Rxc4 hxg4+  
34 Kxc4 Nxb4  
35 Kf4 b6  
36 Ke4 Kg6  
37 Kd4 a6  
38 Kc4 Nc6  
39 Kd5 b5 0-1

*Paul Spencer*