

# NEW ENGLANDER

## Chess Club Update – May 2012

### Chairman's Chatter

April showers may dampen the spirits and dissuade you from venturing forth but we have competitions to finish! With the recent fixture reshuffle, the schedule for the coming month is re-iterated below as a reminder of how few formal club nights we have left.

*Paul Hanks*

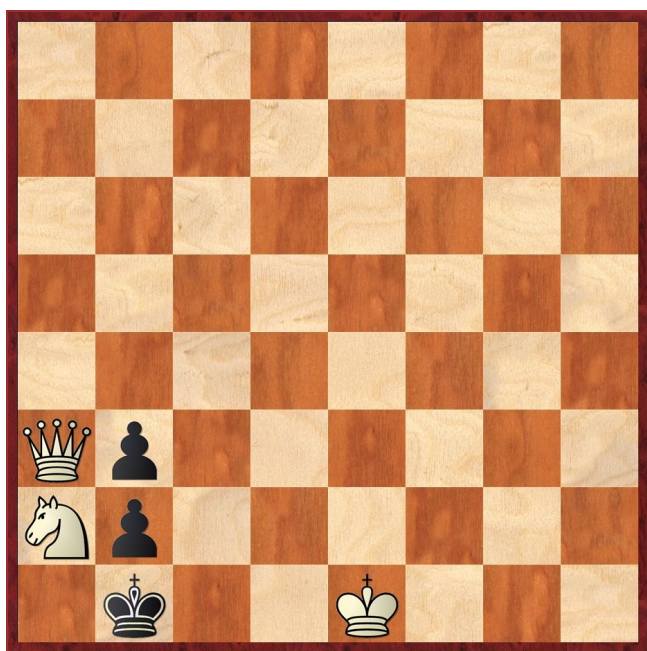
### Diary Dates

The closing date for both the Club Championship and Ladder competitions is 31st May. To fit in the remaining games and allow for some postponements :

25th Apr	Club Championship reserve night
2nd May	Club Championship Round 5
9th May	Problem Night
16th May	Club Championship Round 6
23rd May	Club Handicap competition
30th May	Club Championship reserve night

The County Jamboree draws the league season to a close on Thursday 17th May at Godmanchester.

### Puzzle Problem



Last Month's solution

Position : 3bk3/2P3Q1/8/3N2p1/6K1/8/8/8

1 c8B Bf6 2 Qg8# [1 ... Be7 2 Qxe7#]

### Website to Watch

There is only one show in town this month. From 11th May to a possible tie-break on 30th May, Vishy Anand will defend his world title against Boris Gelfand over 12 games in Moscow. <http://moscow2012.fide.com> is the official website.

### Window on the Web

The website of the American IM, author and trainer Jeremy Silman, is [www.jeremysilman.com](http://www.jeremysilman.com) and has 4 sections, only the first, *Chess*, being solely about the game.

The first part of that section, *Instruction*, contains pages on how to attack, which uses annotated games to illustrate attacking methods. *Orlov's Middlegame Lessons* come next, with subjects such as bishop v knight, two bishops, pawn structure and planning. *Study of Master Games* is next, in which IM Silman annotates some of his favourite games. *Stylistic Progression* is the next part, with IM Silman embarking on a long discussion about the link between style changes over time and improving playing strength. He annotates many of his games played between the early 1970s and late 1990s and provides at the end his tips for improvement. After this comes *Tournament Instruction* with discussions about understanding your openings, statistics & dynamics, calculation and typical mistakes. *True Combat* follows, with games annotated by IM Timothy Taylor. The final item in this part is *GM Zaitdinov's Training Tips* in which he suggests that chess success is dependent on the assimilation of chess patterns.

The next part is *Interviews and Discussion*, followed by a part on *Openings* starting with many articles written by the ubiquitous IM Andrew Martin (presenter of many chess DVDs). His contribution is followed by items on Opening Analysis, Shortcuts and Theory Archive, containing even more annotated games.

The part after that is *Book Reviews* containing reviews of hundreds of chess books.

Next is *History*, in which IM Silman annotates games of some great players of the past.

Three further sections are grouped together under *Fun Stuff*. I leave you to explore these if you wish.

The content of this site is huge. If you wish to read it all be prepared to be occupied for weeks!

*Ron Jones*

### Result Round-up

#### Cambridgeshire County Chess Leagues

Warboys B	2	New England B	2
J Beck	½	M Dunkley	½
P Clough	0	D Lane	1
M Onyons	1	M Tarabad	0
D Wardle	½	J Parker	½

Rapidplay : 18th April 2012

Player	Rd 1		Rd 2		Rd 3		Rd 4		Pts
	Opp	Res	Opp	Res	Opp	Res	Opp	Res	
1 C Ross	6	1	5	1	2	½	3	1	3½
2 F Bowers	4	1	3	1	1	½	6	0	3½
3 S Caraway	5	1	2	0	4	1	1	0	2
4 J Parker	2	0	6	1	3	0	5	0	1
5 N Wedley	3	0	1	0	6	0	4	1	1
6 H Currie	1	0	4	0	5	1	2	0	1

**New England Grand Prix**

Player	Champ	Ladder	League	Cup	Team 550	Total
F Bowers	3½	10	3½	2		19
P Spencer	2	6½	4	0	5	17½
D Lane	1½	4½	3½	0	4½	14
P Hanks	2½	4	3	1	1	11½
N Wedley	2	8				10
S Sitaram	1½	2	3½	0	2	9
C Ross	2	5	2			9
J Parker	2	½	½	0	6	9
S Caraway		2	2½	2	2	8½
P Turp	1½	0	4		2½	8
R Jones	1½		3½	½	2	7½
M Dunkley	3		4	½		7½
M Tarabad	1	0	0		4	5
S Walker	1½	2	1		0	4½
I Garrett	1	1		1	0	3
C Russell	½				1½	2
S Wozniak		1			1	2
S Farrington	1	0				1
H Currie	0	0			0	0

**Club Championship**

Round 3			
D Lane (1½)	P	P	R Jones (1½)
S Farrington (0)	1	0	H Currie (0)
Round 4			
C Ross (2½)	P	P	M Dunkley (3)
J Parker (2)	0	1	F Bowers (2½)
P Spencer (2)	P	P	D Lane (1½+P)
R Jones (1½+P)	P	P	P Turp (1½)
P Hanks (1½)	1	0	I Garrett (1)
H Currie (0)	0	1	N Wedley (1)
C Russell (½)	P	P	M Tarabad (1)
S Farrington (1)	0	1	S Walker (½)
Round 5			
F Bowers (3½)			M Dunkley (3+P)
P Spencer (2+P)			C Ross (2½+P)
P Hanks (2½)			P Turp (1½+P)

S Walker (1½)		J Parker (2)
N Wedley (2)		R Jones (1½+2P)
M Tarabad (1+P)		S Farrington (1)
D Lane (1½+2P)		C Russell (½+P)
I Garrett (1)		H Currie (0)
Match night : 2nd May    Deadline : 15th May. Next draw and round : 16th May		

**New England Club Ladder**

White		Black	
N Wedley	0	D Lane	1
F Bowers	1	P Hanks	0

Pos	Player	Record <small>18/04/12</small>
1	C Ross	1,1,1,1,1
2	F Bowers	½,1,1,1,1,1,1,1,½,1,1
3	S Caraway	½,0,1,½
4	P Hanks	1,1,1,1,0,0
5	P Spencer	½,½,1,½,1,0,1,0,0,1,1
6	S Wozniak	0,0,0,1
7	D Lane	½,1,1,0,0,1,1
8	M Tarabad	0,0,0,1,0,0
9	N Wedley	½,½,0,1,1,1,1,0,1,1,0,0,1,0
10	J Parker	0,½,0,0,0,0
11	H Currie	0,0,0
12	R Jones	
13	S Walker	0,0,1,1
14	P Turp	0
15	I Garrett	1,0,0,0,0,0,0
16	S Sitaram	1,0,1
17	S Farrington	0,0,0
18	M Dunkley	

**Match of the Month**

**N Wedley v D Lane**

New England Club Ladder, 28.03.12

1      **d4**                      **c5**

This new departure for me comes after a recommendation from Francis. In the book of his best games, Alekhine branded the move 1 ... c5 as "one of my chess sins" but there has been a lot of new theory since 1939! Even at our level, I was happy to let my opponent try to hold the pawn when I can take advantage of White's contorted development.

2      **d5**                      **Nf6**  
3      **c4**                        **d6**

We have reverted to a normal Benoni set-up. The classical continuation is 3 ... e6 to exchange central pawns and open the e file but the pawn sacrifice 3 ... b5 is fashionable and even the offbeat 3 ... Ne4 has been tried. I had in mind a more unorthodox and provocative development at move 4.

4      **Nc3**                      **Bf5**  
5      **f3**                         **g6**  
6      **e4**                        **Bd7**  
7      **Bd3**                      **Bg7**

Black's bishop pair are nicely stationed on clear diagonals with the pawn mass blocking most other lines. The strategic question is "Where will White castle?" His pawn advances leave his king exposed in the centre; on the kingside, it will add risk to his natural pawn storm attack on that flank and he will run into my counterplay on the queenside.

**8 Qc2 Na6**

I did not understand White's move. Perhaps g6 will eventually become a target but as this is the strong point of the fianchetto, I should be able to cause a lot of mischief elsewhere before I need to worry. As it is, Black's knight comes into the fray with the possibility of Nb4 causing White to lose a tempo.

**9 a3 0-0**  
**10 b3 Nc7**  
**11 Bb2 e5**

White often bases his play on the thrust e4-e5 but this trademark move of the Czech Benoni removes the opportunity. Unless White exchanges with 12 d5xe6e.p. (unlocking the e6 square for a black piece), I am also gaining control of the dark squares in the centre d4 and f4.

**12 Nge2 Nh5**  
**13 Bc1 b6**  
**14 Be3 a6**

The time lost by White's dark squared bishop preventing Nh5-f4 leaves him behind in development and his knights lack mobility. This has given Black the chance to expand cautiously on the queenside without the spoiling a2-a4-a5 and now, I have the more convincing pawn breaks in f7-f5 and b6-b5.

**15 g4 Nf6**

I could see the storm brewing on the kingside but was confident that my defences would hold. White's pieces are not well placed to follow up the pawn advance and I could see 16 g5 just puts more obstacles in their path. The computer prefers to attempt a breakthrough with 16 h4 or Ng3 bringing Qh2 into consideration.

**16 g5 Nf8**  
**17 0-0-0 b5**  
**18 h4 bxc4**  
**19 Bxc4 f6**  
**20 h5 f5**  
**21 hxg6 hxg6**

I liked my position as I have possibilities in the centre and on the queenside. White has to cope with f5-f4 winning the pawn on g5 but it could be double-edged.

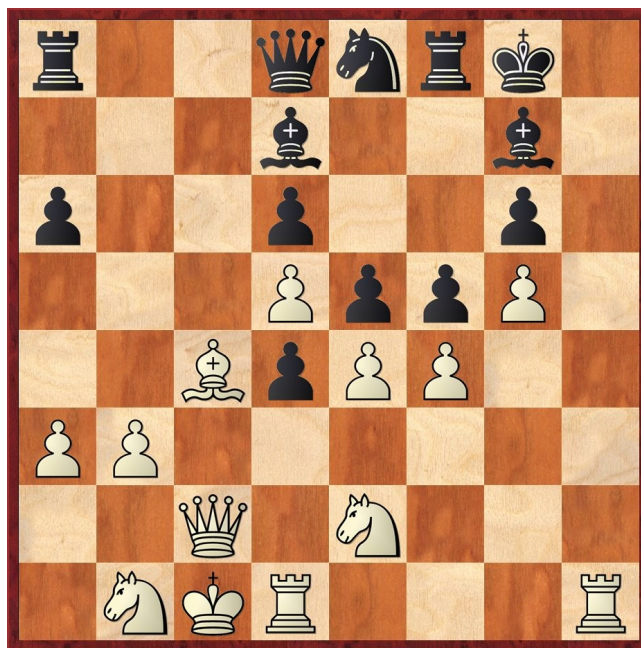
**22 f4**

The computer evaluation starts to go sour for White from this point but none of the alternatives seem promising e.g. 22 exf5 Bxf5 23 Ne4 Nb5 24 Qb2 when my better piece co-ordination should ensure an initiative.

**22 ... Nb5**  
**23 Nb1**

White had a slight time advantage at this point and Norman invested ten of his remaining minutes trying to find the best way to stem the tide on the queenside.

**23 ... Nd4**  
**24 Bxd4 cxd4**



**25 Rdg1**

As White wants open lines on the kingside, the position looks ripe for pawn captures in the centre. After 25 fxe5, Black may have to speculate with 25 ... dxe5 26 d6+ Rf7 27 Bxf7+ Kxf7 28 exf5 (28 Qc4+ Be6) 28 ... Bxf5 when Black has beautiful compensation. If instead 25 ... Qxg5+ (which looks safer), White starts to achieve his goals with 26 Nd2 Bxe5 27 Rdg1 Qe3 (27 ... Qf6 28 Rh6) 28 Rxc6+ Ng7 29 Rgh6.

**25 ... Rc8**

25 ... fxe4 26 Qxe4 Bf5 is going to come at some stage and if played now (or, at least, earlier than in the game), it would avoid any possibility of White going down the route mentioned in the previous note. As it is, the double pin down the c file is also strong and maybe should be met by 26 Nd2 trying to solidify.

**26 Qd3 Qb6**  
**27 Kb2 fxe4**

With the queen overloaded, White's ship has hit an iceberg.

**28 Qxe4 Rxc4**

Women and children first!

**29 Qxg6**

Will a perpetual check provide a lifeboat?

**29 ... Bf5 0-1**

White resigned when faced with loss of the queen or 30 Qh5 Rc2+ 31 Ka1 Qxb3 going down with all hands.

*Des Lane*