

NEW ENGLANDER

Chess Club Update – January 2013

Chairman's Chatter

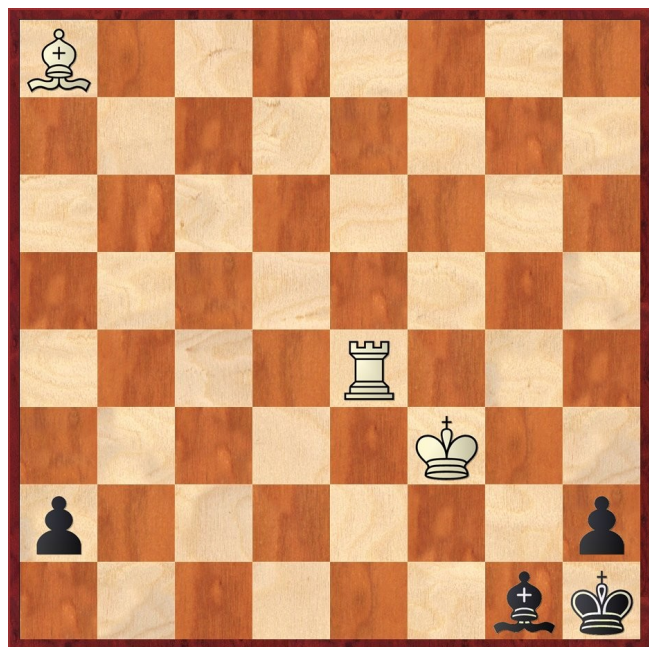
You should by now have unwrapped your chess books and DVDs and be ready to expend some mental energy burning off surplus calories from the indulgences over Christmas. We have plenty of ongoing tournaments such as the Club Ladder and the innovation in this issue is to highlight the number of postponed matches that are accumulating. As we shall need as many clear club evenings as possible towards the end of the season, please play your Championship games at the earliest opportunity to avoid later fixture conflicts. There is no excuse for inactivity in 2013!

Paul Hankes

Diary Dates

The first in what promises to be a series of events will take place on 9th February 2013. The six-round competition will run under the banner of Peterborough Rapidplay at The Iqra Academy off Bretton Way. The site www.peterboroughrapidplay.moonfruit.com has online entry though cheques by post are possible with an additional £2 administration fee.

Puzzle Problem



Last Month's solution

Position : 1b4b1/8/5Q2/1K1k4/8/8/4R3/4n3

1 Qc3 Nd3 2 Qxd3# [1 ... Bd6 2 Qc4#; 1 ... Kd6 2 Qc6#; 1 ... Be5 2 Qxe5#; 1 ... other 2 Qc5#]

Website to Watch

January's big event in is at Wijk aan Zee in Holland. Sponsored by Tata Steel, its top division attracts 9 players rated 2700+ especially from the young contingent Carlsen, Karjakin, Caruana and Giri. There are actually three divisions of 14 players each in a round-robin tournament from 12th-27th January and can be followed at www.tatasteelchess.com.

If you are dreaming of some winter sun, try the Tradewise Gibraltar Open from 22nd-30th January. If you plan on entering, the participant list is impressive with Ivanchuk, Kamsky, Shirov and Adams among others standing between you and the first prize of £20000 so you may be more interested in the grading prizes of £2000! The festival brochure is available from www.gibraltarchesscongress.com.

Window on the Web

For those who are not yet aware of this, the improved and updated Cambs CCA website is now to be found at www.cambschess.co.uk. It contains all the league and 550 results and tables and Fenland Cup results, with league rules, administrative details and more.

Another association to have a new website this year is the Suffolk CCA. This site was set up at <http://www.suffolkchess.org.uk> at the end of September this year and is already showing promise as a varied and interesting chess site. There are the usual links to rules, constitution, clubs, county match results and the like, but of most interest to non-Suffolk players is a blog archive. This has items on various subjects including a thought-provoking article on the pros and cons of the enforced use of digital clocks in preference to analogue and an article entitled *Ace of Tromps* being a treatise on the Trompowsky which includes a game by Karpov. Very instructive. There are also a few games to play through, one of which is lightly annotated. I assume the number of games will increase as time goes on.

Another of our neighbours, Norfolk CCA's website is at www.norfolkchess.org and is worth a look even if only for the *Games* area. There are over 195 annotated games here from the 2012 Norfolk Championship, Norfolk Challengers and Great Yarmouth Open tournaments as well as the Norfolk Championship and Great Yarmouth Open in 2011. These games can be played through using the site's own viewer. They were played mostly by club players (plus a couple of IMs) so mistakes were made, making the annotations instructive. I noticed the names of one or two Cambridgeshire league players in the lists of games.

Ron Jones

Result Round-up

Cambridgeshire County Chess Leagues

Postponed : **New England B v Buckden A**

Team 550 Competition

New England 2	4	Godmanchester	0
S Caraway	1	J Wright	0
R Jones	1	A Rankine	0
D Lane	1	J Bygraves	0
S Walker	1	M English	0
New England 1	½	Warboys N	3½
M Dunkley	0	R Mann	1
P Spencer	0	C Watkins	1
S Wozniak	½	M Onyons	½
J Parker	0	D Wardle	1

Postponed : **Warboys N v New England 2**

New England Club Ladder

White		Black	
P Spencer	1	0	J Sadler
P O'Gorman	0	1	F Bowers
S Caraway	1	0	J Sadler
J Parker	0	1	F Bowers
S Walker	0	1	N Wedley

Position	Change		Player	Record <small>19/12/12</small>
	Month	Overall		
1	-	+13	F Bowers	1,1,1,1,1,1
2	-	+2	P Spencer	1,1,1,1
3	-	+6	D Lane	0,1
4	-	+6	P Hanks	½,½,1,1
5	-	+2	N Wedley	0,0,0,0,1,1
6	-	-5	J Parker	0,1,0,0,0
7	-	+6	S Walker	1,0,0
8	-	-6	H Currie	0,0
9	-	+3	I Garrett	0,1,0,1,0
10	+2	-2	S Caraway	1,½,0,0,1
11	-1	-6	P Turp	1
12	-1	-9	R Jones	
13	+2	+2	J Sadler	0,0
14	-1	-8	M Tarabad	
15	-1	-4	S Wozniak	½
16	-	-	P O'Gorman	0

Club Championship

Round 1			
White		Black	
M Tarabad	P	P	S Caraway

Round 2			
J Parker (0)			D Lane (0)
I Garrett (0)	0	1	P Spencer (0)
S Caraway (P)			R Jones (½)
S Walker (½)			J Sadler (P)
M Dunkley (1)			C Russell (1)
P Hanks (1)			M Tarabad (P)
N Wedley (1)			F Bowers (1)
J Sadler (Rd 1)			P Turp (1)

Match night : 6th February. Deadline : 27th February.
Next draw : 1st March

New England Grand Prix

Player	Champ	Ladder	League	Cup	Team 550	Total
F Bowers	1	6	1½	½		9
P Turp	1	1	2½	1	2	7½
P Hanks	1	3	2	½	½	7
P Spencer	1	4	1½	0	½	7
S Caraway		2½	2	1	1½	7
D Lane	0	1	1	½	2½	5
S Walker	½	1	2		1	4½
N Wedley	1	2				3
M Dunkley	1	-	1½	½	0	3
J Parker	0	1	1		1	3
S Wozniak	-	½			2	2½
R Jones	½		1	0	1	2½
I Garrett	0	2			0	2
C Russell	1	-			½	1½
H Currie	0	0				0
J Sadler		0				0
M Tarabad						0
P O'Gorman		0				0

Pos	Player	Rd 1	Rd 2	Rd 3	Rd 4	Total
1=	C Ross	1	1	5	1	8
	F Bowers	1	1	5	1	8
3=	P O'Gorman	½	0	5	0	5½
	B Sadler	½	0	5	0	5½
5	S Wozniak	1	1	2	1	5
6=	C Russell	1	0	2	1	4
	P Spencer	1	1	1	1	4
8	S Caraway	1	1	1	½	3½
9	M Tarabad	0	1	2	0	3
10	P Turp	0	0	2	½	2½
11=	J Parker	0	0	1	1	2
	J Sadler	0	1	1	0	2
13=	S Walker	0	0	1	0	1
	H Currie	0	0	1	0	1

Match of the Month

D Lane (117) v C Emery (138)

Team "550", New England 2 v St Neots, 2012

1 c4 e5 2 a3

This moves aims to pre-empt any difficulties arising from Bf8-b4. The idea is similar to Petrosian's treatment of the Queen's Indian Defence 1 d4 Nf6 2 c4 e6 3 Nf3 b6 4 a3. Here, however, it may also assist an eventual queenside expansion. But will I suffer due to this lost tempo?

2 ... a5

Black also invests time keeping the flank under control.

3 Nc3 f5 4 g3 Nf6 5 d3 Bc5 6 e3

Normally, the text move is a minor concession. After a kingside fianchetto, moving the e pawn can leave the f3 square weak. The alternative "straightforward" development is anything but - it can lead into some very murky waters with such crude tactics as 6 Nf3 Ng4 7 Bg5 Bxf2+ 8 Kd2 Nf6 9 e3 when the bishop is trapped.

6 ... 0-0 7 Bg2 c6 8 Nge2 d5 9 cxd5 cxd5 10 d4

Black was building a threatening central pawn mass and challenging it was essential either now or on the next move.

10 ... exd4 11 exd4 Bb6 12 0-0 Nc6 13 Be3

13 Bg5 was a viable alternative.

13 ... Be6
14 ... Nf4

The text move is the first appearance of the white knights as a marauding force. 14 Qb3 also came into consideration because it starts a cascade of interference in the cooperation of the black pieces.

The black bishop on b6 cannot move; the black queen is restricted; the black rooks cannot operate freely on the central files...

14 ... Bf7
15 Rc1 Re8
16 Rc2 Ng4

White must have forgotten that the knight is on f4 and not on f3 where it blocks the bishop. Losing a central pawn is often disastrous and with d5 falling, Colin makes problems for himself. 16 ... Ne4 was superior and probably maintains equality.

17 Nfxd5 Ba7
18 Re1

As I said, losing a central pawn is a bad idea and here I am returning the favour...

18 ... Bxd4
19 Bxd4 Rxe1+
20 Qxe1 Nxd4
21 Rd2

but I am getting significant activity in return!

21 ... Nc6
22 Qd1 Nge5
23 Ne3

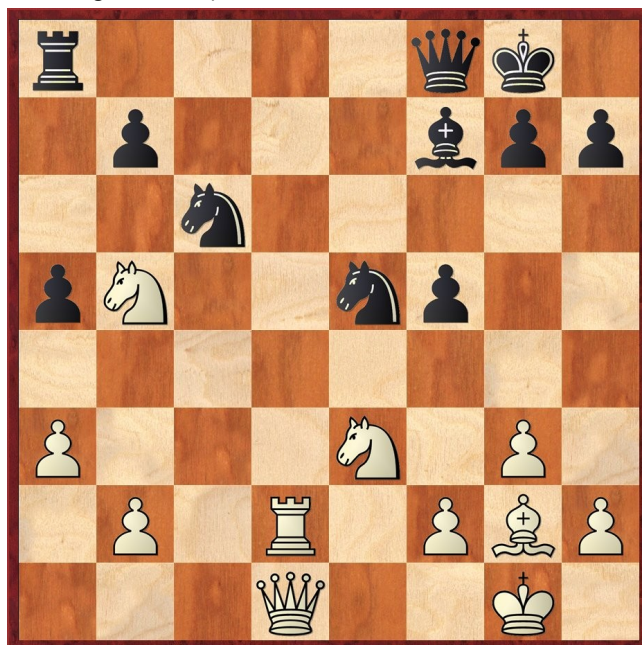
With control of the d file and a target on f5, White has a dominant position. It only remains to find a way to penetrate Black's fortress.

23 ... Qc8
24 Nb5

The d6 square will do nicely!

24 ... Qf8

24 ... g6 is an attempt to save the pawn on f5 but I can slowly improve my position by 25 Nd6 Qc7 26 Nxf7 Kxf7 27 Nd5 Qb8 (27 ... Qc8 28 Nb6) 28 Nb6 Ra6 29 Qb3+ Kg7 (29 ... Kf6 30 Bxc6 Nxc6 31 Nd7+) 30 Nd7 Qe8 (30 ... Nxd7 31 Rxd7+ leads to mate e.g. 31 ... Kh6 (31 ... Kh8 32 Qf7) 32 Qe3+ g5 33 Qe6+ Kh5 34 Qf7+ Kg4 35 h3#) 31 Qc3.



25 Nxf5

This capture could be delayed as the pawn will drop all in good time. 25 Nd6 immediately is the alternative when the pawn may try to give its life for some structural damage with 25 ... f4. Sadly, this runs into unpleasant tactics 26 gxf4 Ng6 27 Nxf7 when neither 27 ... Qxf7 28 Bd5 or 27 ... Kxf7 28 Qb3+ Ke8 29 Qxb7 will do.

25	...	Rd8
26	Nfd6	Rb8

26 ... Qe7 may allow Black to escape to an ending after 27 Nxf7 (27 Na7 is a move only computers can see based on 27 ... Nxa7 28 Nf5) 27 ... Nxf7 28 Rxd8+ Qxd8 29 Qxd8+ Ncx8 30 Bd5 Kf8.

27	Nxf7	Nxf7
28	Bd5	Kh8
29	Nc7	Qe7
30	Ne6	Re8
31	Kg2	

I avoid any exchanges on the back rank.

31	...	Ncd8
32	Nf4	

There are alternatives for both sides over the last six moves but essentially the computer evaluation of the position does not change. Only here is 32 Re2 supposed to be marginally better than the move played.

32	...	Qf6
33	Rc2	b6
34	Qd3	g6
35	Qb5	Nd6
36	Qxb6	g5
37	Nh5	Qg6

Attacking a rook? Trapping a piece?

38	Qd4+	1-0
----	------	-----

Sadly not!

Des Lane

Eye Opener

There is a mistaken impression that opening play is about finding a hitherto unknown variation that looks harmless but contains hidden tactics. Normally, though, early disasters arise from plain ruthlessness when basic development is neglected.

A J Miles v Kalesis Chania 1997

1	d4	Nf6
2	c4	e6
3	Nc3	Bb4
4	Nf3	b6
5	Qb3	c5
6	Bg5	h6

Most games in this variation continue naturally with 6 ... Bb7. Note here how Black fails to get his pieces into play.

7	Bh4	Nc6
8	d5	Na5

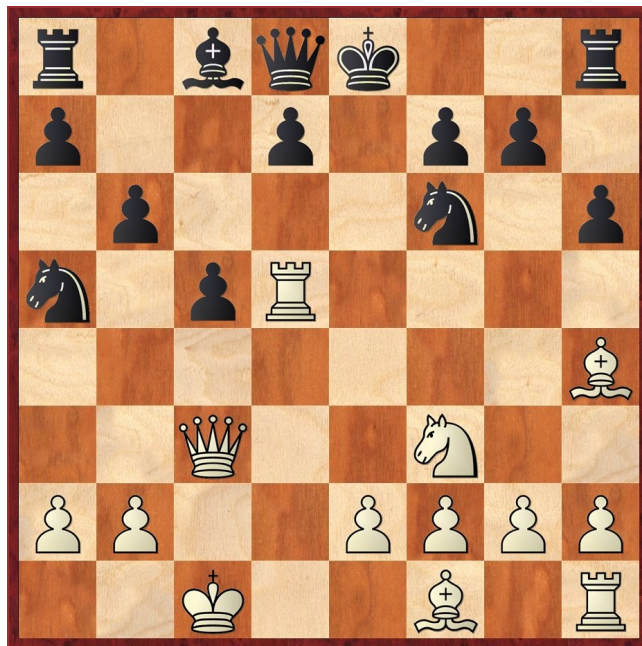
8 ... exd5 9 cxd5 is playable but Black's intention is to snatch the pawn on c4.

9	Qc2	Nxc4
10	0-0-0	

White's threats arising from superior development are starting to crystallise. Black now has to cope with 11 dxe6 when neither recapture looks palatable.

10	...	Bxc3
11	Qxc3	exd5
12	Rxd5	Na5

12 ... b5 could be considered but the queenside pawns quickly become weak after 13 e3 0-0 14 Bxc4 bxc4 15 Rxc5.



13	Rd6	Qc7
----	-----	-----

13 ... 0-0 runs into a similar though less obvious combination 14 Rxf6 gxf6 15 Bxf6 Qc7 16 Ne5 forcing checkmate e.g. 16 ... Kh7 17 Qd3+ Kg8 18 Qg3+.

14	Rxf6	
----	------	--

The rook hanging on h8 will seal Black's fate after 14 ... gxf6 15 Qxf6 even though Black has the defence 15 ... 0-0 16 Qxh6 f6 [16 ... Qc6 17 Bf6] 17 Qg6+ Kh8 18 Bxf6+.