

# NEW ENGLANDER

## Chess Club Update – October 2014

### Chairman's Chatter

There will be a small and hopefully insignificant change to the Ladder Competition this year. All participants on the first evening shall be placed in a random order. Thereafter, all new entrants will initially appear at the bottom of the table. This will avoid having to publish a long and mostly empty table in the early stages of the event.

As a reminder of the rules, please note :

- five games are required in the competition to qualify for the final listing
- competitors risk losing one place in the ranking if no game is played for three months.

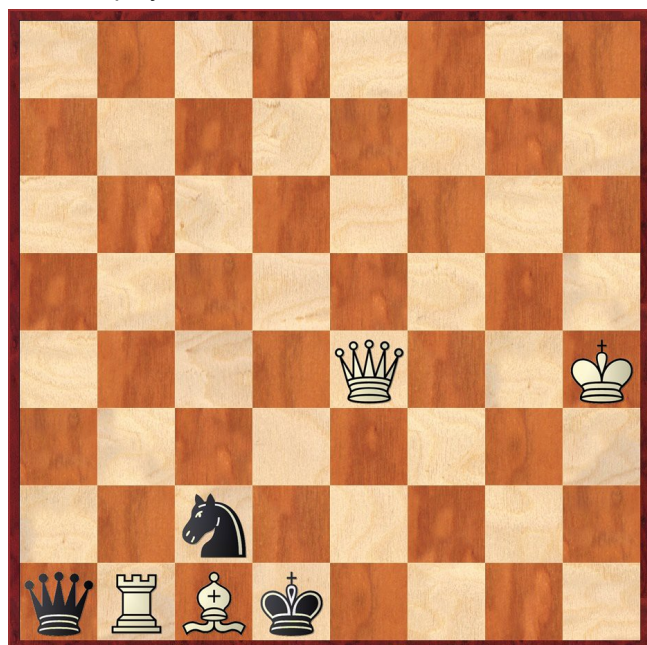
*Paul Hanks*

### Diary Dates

The details of the County Individual Championship are emerging. It will be held 1<sup>st</sup> and 2<sup>nd</sup> November in the new venue for Peterborough Chess Club i.e. The Peterborough Bridge Club, Unit 1, New England Complex PE1 2PE. The car park is in Lincoln Road but the entrance is in York Road. Entry forms are available on [www.cambschess.co.uk](http://www.cambschess.co.uk).

### Puzzle Problem

White to play and mate in 2



Last Month's solution (E B Cook, 1868)

Position : 7k/1R4N1/8/8/7K/6R1/8/7Q

1 Qa1 Kh7 2 Nf5# [1 ... Kg8 2 Ne6#]

### AGM Summary

The AGM was attended by 12 members with one observer and transacted the following business :

- the club made a small surplus in the past year and even though league entry fees are likely to rise, there was no need to increase club subscriptions
- club subscriptions remain at ECF membership + Lancaster club membership + £5 (i.e. currently £36 for bronze ECF membership)
- reports by team captains showed that 2013-14 had been difficult in sporting terms with both league teams narrowly avoiding the wooden spoon in their respective divisions. Only a late but emphatic loss prevented one team winning the northern division of the Team 550 competition.
- the success of the website continues with over 15,000 hits in the past year
- the committee was re-elected as previously
- league competitions entries and internal event formats were unchanged but the appetite for competitive summer chess would be reviewed after the formal season
- a "Game of the Season" competition was approved.

### Website to Watch

The 2014-15 FIDE Grand Prix series has a history of problems. The start was postponed and the series curtailed to four tournaments but like London buses, two eventually come along together! From 2<sup>nd</sup> to 14<sup>th</sup> October, Baku will host the first event (see <http://baku2014.fide.com>) and on 20<sup>th</sup> October, the circus moves to Tashkent until 3<sup>rd</sup> November (website not yet available).

### Window on the Web

Most chess players learn to play the game as children. Many of us, even if we have no young children of our own, will have grandchildren, nieces or nephews of school age, but can they play chess? Not every school has a chess club yet. The benefits of teaching chess to children are well known. They learn concentration, problem-solving, decision making, to accept defeat well and they become more confident.

The future of chess is in the hands of today's youth, so perhaps we should do as much as we can to introduce them to the game and nurture their interest in it. Hopefully they will go on to join a chess club (even if not ours) and enjoy a lifetime of chess.

<http://www.activityvillage.co.uk/chess-for-kids> contains templates so that a chess set can be printed out, cut out and assembled as a basic free starter set, together with an explanation of how each piece moves and some tips on basic opening play.

<http://www.chesskids.com.au> is an Australian site which has several resources aimed at children, including on-line lessons (for a small fee) although there are free sample video lessons such as “The Three Golden Rules of Chess”. There is a link to a free archive of 1001 checkmate puzzles at <http://chessmicrobase.com>, although the answers are next to the puzzles and only the first 30 actually work. That site does, however, give free access to shared public databases of games that can be played through.

*Ron Jones*

### Game of the Season – Guidelines

1 To qualify for the competition, a game must be played by a member of the New England Chess Club in a formal session with a minimum time limit of 1 hour per player and to have taken place between 1<sup>st</sup> June of the previous year and 31<sup>st</sup> May.

2 A player involved in the game must make a provisional nomination of the game by providing the scoresheet to the Tournament Secretary within one month of the game being played.

3 A player may nominate any number of games but at the closure date for entries (31st May) must refine the selection to a single submission.

4 The Tournament Secretary shall distil the submissions to a shortlist of typically 5 games which shall appear on the club website and in the July issue of the club newsletter.

5 All games shall be judged on the quality of the moves played and the sporting significance of the result. Any annotations, whilst helpful, shall not form the basis for judgement.

6 All club members may vote in the competition by informing the Tournament Secretary of their preferences by 1<sup>st</sup> September and assigning 3 votes to their favourite game, 2 to the runner-up in their vote and 1 vote to the bronze medallist.

7 The Tournament Secretary shall total the number of votes cast for each game and the one amassing the highest sum shall be declared “Game of the Season”. In the event of a tie, the game receiving any votes from the highest number of club members shall be declared the winner.

8 The winner shall be announced at the Club Annual General Meeting.

### Result Round-up

#### New England Club Ladder

White		Black	
M Tarabad	0	1	D Lane

Position	Change		Player	Record 24/09/14
	Month	Overall		
1	+1	+1	D Lane	1
2	-1	-1	M Tarabad	0

#### Summer Sprint – Final Table

Player	Grade	Game		Total	Game 3
		1	2		
P Hanks	149	189	158	347	-
S Caraway	158	189	149	338	-
P Turp	165	189	-	189	-
P Spencer	137	135	-	135	-
J Parker	85	122	0	122	-
N Wedley	104	122	-	122	-
D Lane	139	0	0	0	0
I Garratt	72	0	0	0	-

#### Club Championship

Round 1			
M Tarabad	0	1	R Jones
J Sadler	1	0	M Dunkley
P Spencer	1	0	I Garratt
S Walker	0	1	D Lane
J Parker	1	0	B Sadler
N Wedley	0	1	P Hanks
S Wozniak	0	1	S Caraway
C Russell	P	P	P Turp
Match night : 17th September. Deadline : 31st October.			

Round 1.5			
P O’Gorman			J Parker (1)
Round 2			
D Lane (1)			J Sadler (1)
R Jones (1)			P Spencer (1)
P Hanks (1)			M Tarabad (0)
I Garratt (0)			S Walker (0)
M Dunkley (0)			N Wedley (0)
P Turp (P)			S Wozniak (0)
S Caraway (1)			C Russell (P)
B Sadler (0)			P O’Gorman
Match night : 5th November. Deadline : 19th November. Next draw : 20th November			

Player		P	W	D	L	Pts
1	P Spencer	9	8	1	0	8½
2	S Caraway	9	8	0	1	8
3	J Sadler	9	6	1	2	6½
4	N Wedley	9	5	0	4	5
5	S Wozniak	9	5	0	4	5
6	D Lane	9	3	2	4	4
7	M Tarabad	9	4	0	5	4
8	I Garratt	9	2	0	7	2
9	P Stevens	9	2	0	7	2
10	J Parker	9	1	0	8	1

## New England Grand Prix

Player	Champ	Ladder	League	Cup	Team 550	Total
D Lane	1	1				2
S Caraway	1					1
R Jones	1					1
P Spencer	1					1
P Hanks	1					1
J Sadler	1					1
J Parker	1					1
S Wozniak	0					0
S Walker	0					0
N Wedley	0					0
M Tarabad	0	0				0
M Dunkley	0					0
I Garratt	0					0
B Sadler	0					0
P Turp						
P O'Gorman						
C Russell						

## Match of the Month

Des was unable to get to the club for the following game in the Summer Sprint. Instead, he invited me to Lane Palace and after we had solved all the world's woes over a cup of tea, we settled down to tackle some really difficult problems.

## P Hanks v G D Lane

Summer Sprint Round 2, 20.08.2014

1 d4 b6  
2 e4 e6

At this point, I could see what was going to happen and felt I was being conned into a French Defence. Indeed, the move order 1 e4 e6 2 d4 d5 3 e5 c5 4 c3 b6 would be a more conventional route to the game position but Black's last move does not appear in books on opening theory because the b6 square is reserved for the black queen in most variations.

3 Nf3 Bb7  
4 Bd3 c5  
5 c3 d5  
6 e5 c4

This move came as a slight surprise. I have played a game with a similar structure and without an obvious way to open a file, I found it very hard to find a way for Black to gain any counterplay.

7 Bc2 h6  
8 O-O Nc6  
9 Nbd2 b5  
10 Qe2 Be7

White's best attacking chance comes from f2-f4-f5 but it might be too committal in the event that Black castles on the queenside and plays f7-f6 blasting open the centre and the kingside files. My last and next few moves aim to deter both of these options and to allow me to ignore b5-b4.

11 Rb1 Qc7  
12 b3 Na5

I was expecting 12 ... b4 as it seems quite dangerous at this point especially with the trap 13 cxb4 c3 in the offing. The calm 13 Bb2 is playable but I might have had to chance 13 bxc4 bxc3 14 cxd5 cxd2 15 Bxd2 exd5 16 Ba4 with strong threats (e.g. 17 Rfc1 and 18 Rxb7 or 17 Qb5). I certainly could not work this to a conclusion over the board!

Another drain on my time was 12 ... Qa4 hitting both c3 and a2. After 13 bxc4 Qxa2, there is a safe continuation 14 Bb3 Qa5 15 cxd5 or another piece sacrifice 14 cxd5 with a vicious attack but the clock is ticking!. Then again, 13 ... Qxc3 14 cxd5 Qxc2 15 Qxb5 is complicated but should favour White.

13 bxc4 bxc4  
14 Ne1 Bc6

I thought this was the prelude to queenside castling. Without Bc2-a4, White will take even longer to muster his forces on the b file.

15 f4 Nb7

Another surprise. 15 ... g6 would make White nail his colours to the mast. The advance could continue with 16 g4 but the files in front of the white king look very draughtly particularly in the light of the last comment.

16 f5 Nd8

I did not look too deeply at 16 ... exf5 and the computer pointed out the variation 17 Bxf5 Bd7 (17 ...

g6 is probably best) 18 Bxd7+ Qxd7 19 Qf3 Bg5 20 Nxc4.

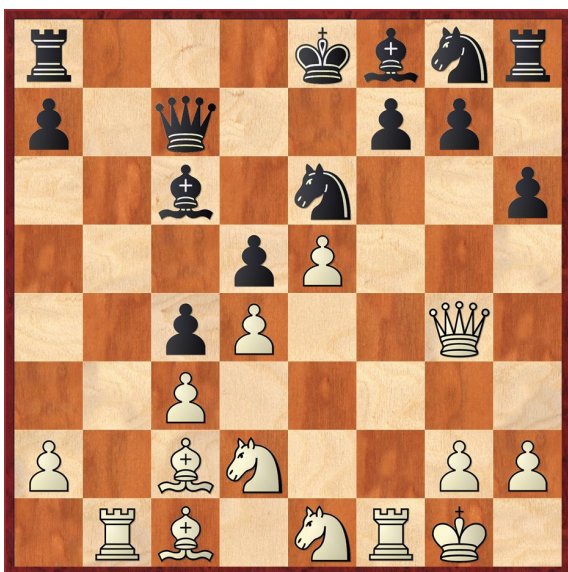
**17 Qg4 Bf8**

17 ... Bg5 leaves Black under pressure after 18 h4 Be3+ 19 Kh1 when both 20 Qxg7 and 20 Nxc4 are threatened.

The attack looks doomed because apart from the rooks, Black has all his army in the defensive positions. As it happens, the light squares are the weakest link and the kingside minor pieces are only covering dark squares.

**18 fxe6 Nxe6**

18 ... fxe6 is no good because 19 Bg6+ Ke7 20 Ba3+ Kd7 21 Rxf8.



I wanted to play 19 Rxf7 on the basis of 19 ... Qxf7 20 Bg6 but 19 ... Kxf7 leaves White only a few checks and some material compensation. Luckily, I had a second sacrifice in reserve!

**19 Bg6 Nd8**

After 19 ... fxe6, 20 Qxe6+ Ne7 21 Ba3 was the extent of my analysis when I had regained the material with continuing threats. The computer confirms my optimism with

- 21 ... Qd7 22 Qf7+ Kd8 23 Qxf8+ (but I should never have found this branch of the combination) Rxf8 24 Rxf8+ Kc7 (24 ... Qe8 25 Rxe8+) 25 Bd6+ Qxd6 26 exd6+ Kxd6 27 Rxa8
- 21 ... Bd7 22 Rxf8+ Kxf8 23 Bxe7+ Ke8 24 Qxg6+ Kxe7 25 Qxg7+ Kd8 (25 ... Ke6 26 Qf6#) 26 Qxh8+.

19 ... Ng5 is a possibility I overlooked when 20 ... fxe6 becomes a real possibility but 20 Bxf7+ Nxf7 21 Qe6+ Ne7 22 Qxf7+ is good for White.

**20 e6 Nf6**

Des chooses the best defence. Again, 20 ... fxe6 promises nothing with 21 Qxg6+ Ke7 22 Ba3+ but there is almost a fantastic defence by 21 ... Nf7 22 Rxf7 Ne7 which fails to 23 Rxf8+.

**21 exf7+ Nxf7**

**22 Qe6+ Kd8**

Another good choice. Obviously not 22 ... Qe7 23 Qxc6+ but 22 ... Be7 is not without some venom and long variations. After 23 Ba3,

- 23 ... 0-0 24 Bxe7 Rae8 25 Rxf6 Rxe7 (25 ... gxf6 26 Bh7+ Kxh7 27 Qf5+ Kg7 28 Bxf6+ Kg8 29 Qg6#) 26 Rxf7 Rxf7 27 Bxf7+ Rxf7 28 Nef3
- 23 ... Kd8 24 Bxe7+ Qxe7 25 Qxc6 Rc8 26 Qa6 Qe3+ 27 Kh1 Qxd2 28 Rxf6 gxf6 29 Qxf6+ Kd7 (29 ... Kc7 30 Qe7+ Kc6 31 Qc5+ Kd7 32 Rb7+) 30 Rb7+ Rc7 31 Qxf7+.

**23 Qxf7**

23 Bxf7 looks risky but it is playable. Black has 23 ... Bd7 24 Qa6 Bc8 25 Qa4 Qxf7 but I missed 26 Qc6.

**23 ... Qd6**

**24 Nef3 Be8**

Where is the safest square for the queen?

**25 Qb7 Bc6**

**26 Qb2 Nd7**

**27 Bc2 Rb8**

**28 Qa1**

Did you spot it?

**28 ... Be7**

**29 Rxb8+ Qxb8**

**30 Re1 Bf6**

**31 Nf1 Qc7**

**32 Ng3 Re8**

**33 Rxe8+ Kxe8**

**34 Nh5 Kf7**

**35 Bf4**

By now, I was very comfortable. I would reach the time control with a material plus and had unravelled my pieces so that they could hunt down the enemy king.

**35 ... Qd8**

**36 Qe1 Qa5**

**37 Nxf6 Kxf6**

**38 Qh4+ Kf7**

**39 Qh5+ Ke7**

**40 Qg6 Nf6**

**41 Qxg7+ Ke6**

**42 Bxh6 Qxc3**

**43 Ng5+ Kd6**

**44 Qxf6+ Kc7**

**45 Ne6+ Kb6**

**46 Qd8+ Kb5**

**47 a4+ Kb4**

**48 Bf8#**