

NEW ENGLANDER

Chess Club Update – September 2015

Chairman's Chatter

By now, you should have received the club fixture list for next season. It is pretty busy until Christmas but eases off thereafter and we almost finish league matches by March. Expect a call from the team captains shortly – they will need your support!

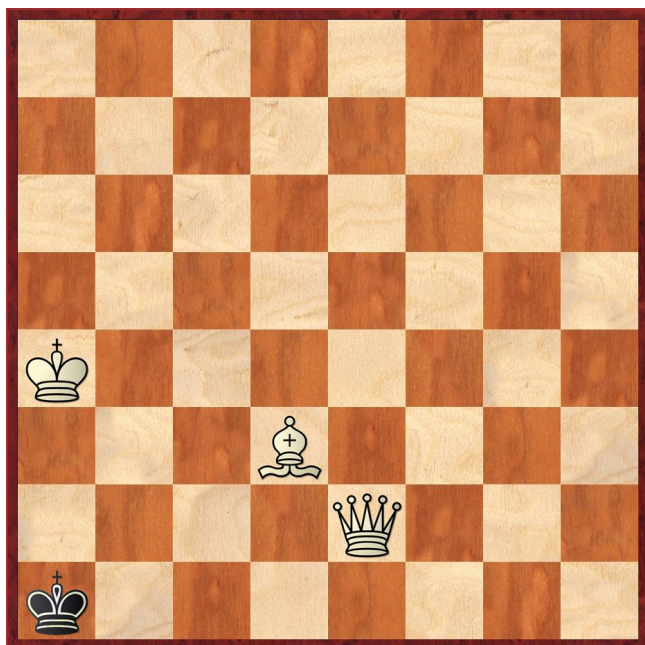
Paul Hanks

Diary Dates

2nd September Final call for the club AGM at 7-30pm
 9th September Club championship Round 1
 11th October Cambridgeshire Rapidplay at Whittlesford Memorial Hall
 28-29th November County Championship at Peterborough Bridge Club, Lincoln Road.

Puzzle Problem

White to play and mate in 2



Last Month's solution (S Loyd 1902)

Position : 4R2b/5k2/3K4/4p3/4P2Q/8/8/8

1 Qg4 Kxe8 2 Qg8# [1 ... Kf6 2 Rf8#; 1 ... Bg7 2 Qe6#; 1 ... Bf6 2 Qg8#]

Website to Watch

The World Cup is a knock-out tournament which also gives qualifying places to the next World Championship cycle. The next event starts on 10th September in Baku, Azerbaijan, lasts until 4th October and gathers together 128 top players. Games can be followed on www.bakuworldcup2015.com/en#.

Window on the Web

Confusingly (especially for some quiz contestants), Southport is neither on the south coast nor is it a port. It is a popular holiday resort about 12 miles north of Liverpool. Its chess club has a website at www.southport-chessclub.co.uk.

Apart from items specific to the club's members, the webmaster has included a couple of sections that will interest any visitor. The link to *Food for Thought* will take you to sets of puzzles, contributed by members, including several smothered mate examples.

Featured Games contains 14 games (mostly annotated) played by members. Several of the games feature the Reversed Stonewall (or Stonewall Attack) where White plays a Dutch Stonewall with an extra tempo. There are also some highly tactical Benko Gambit games.

By contrast, on the south coast lies the Dorset resort of Poole. The resort has a thriving chess club with a website at <http://www.poolechessclub.org.uk/>. The site has a *Games* section with a mix of league and friendly annotated games to play through. Registering with the site will make more games available.

Both clubs are open one evening a week throughout the year and casual visitors are welcome. The Poole club even has a presence in a Bournemouth café one afternoon a week and again any visitors can call in for a casual game. It might be worth a visit if on holiday in either resort and missing chess.

Ron Jones

Result Round-up

Summer Sprint

	White		Black	
F Bowers	1	0	N Foreman	
F Bowers	1	0	P Hanks	
M Tarabad	0	1	D Lane	
I Garratt	0	1	N Foreman	

Player	Grade	Game		Total	Game 3	TPR
		1	2			
F Bowers	169	213	161	374	109	183
S Caraway	161	169	96	265	-	170
N Foreman	46	159	0	159	0	60
D Lane	109	144	-	144	-	144
I Garratt	59	0	0	0	-	23
M Tarabad	94	0	-	0	-	59
P Hanks	163	0	-	0	-	119

Club Championship

Round 1		
R Taylor		S Caraway
C Russell		N Wedley
R Jones		N Foreman
J Parker		I Garratt
F Bowers		S Wozniak
M Dunkley		P Turp
P O'Gorman		S Walker
M Tarabad		D Lane
Match night : 9 th September. Deadline : 30 th November. Next draw : 1 st December		

Round 1.5		
N Wedley		P Hanks
Round 2		
P Hanks		C Russell

Match of the Month

Ron Jones v Alastair Summers

New England B v Peterborough C, 07.02.2013

When playing through this game recently I found myself thinking about the classification of openings. Some depend on what White plays (such as Bird's, Catalan and Reti) and others on Black's choice of moves (Dutch, French, King's Indian). Many games follow a particular opening's main line into the middlegame, others transpose from one opening to another. Then, there are the "unorthodox" systems. I am still not sure where this game's opening would fit.

1 d4 Nf6

There were many options for both sides now.

2 Nf3 g6

It seemed that Alastair wanted a King's Indian. Usually, White plays an early c4 and Nc3. I decided to develop slowly to take Alastair out of his comfort zone.

3 e3

By coincidence, as I was annotating this game in August, the newsletter carried an article about the King's Indian Defence (KID). Unknown to me, none other than Chris Ross responded by passing on his thoughts to Paul about tackling this opening :-

"The KID can easily be avoided as I have for many years now. I do not like playing against it and I have taken it up as Black.

1 d4 Nf6 2 Nf3 g6 3 Bg5 is an easy way to avoid it. 3 Nc3 goes into such things as the Barry Attack whilst 3 Bg5 goes into Torre Attack lines. Indeed, 3 ... Bg7 4 Nbd2! is a good response when 4 ... d5 is not so great for him, as you have Bd3, c3 and an eventual e3-e4 break, when the white knight stands better on d2 instead of c3. 4 ... 0-0 allows 5 e4 with an easy plus for White.

Have a good ponder on this. It just shows that 2 c4 is not always the best move! In fact, 2 Nf3 avoids the stupid lines of the Budapest and other such gambit lines.

If you want a safe line for White, try 2 Nf3 g6 3 g3 when White will have little difficulty developing. You will have to learn some theory to that though.

Just a slight change on move 2 can make such a big difference!"

3	...	Bg7
4	Bd3	0-0
5	0-0	d6
6	Nbd2	Nbd7
7	c3	e5
8	e4	

Since Alastair's third move, all our moves were the most popular ones according to 365chess.com's opening explorer, which classifies the opening as a King's Indian, East Indian Defence. I suspect we had both been "out of the book" for a while.

8	c6
9	Qc2	Qc7
10	dxe5	dxe5
11	b3	Re8
12	a4	b6
13	Bc4	a5
14	Ba3	

Setting up a *Horwitz Bishops* formation (see **NEW ENGLANDER**, July 2014), but not for long.

14	Ba6
15	Qd3	

Fritz prefers 15 Bxa6 to misplace the black rook. Computers are obviously immune to boredom because it also advocates 15 Qd3 Bf8 to swap the other bishop as well!

15	...	Bxc4
16	Nxc4	Nc5
17	Bxc5	

Although this gave up a bishop for a knight, it ruined Black's pawn structure, made the outpost for my knight on c4 even stronger and helped to restrict the scope of his remaining bishop.

17	bx5
18	Rfd1	h6
19	h3	Rab8
20	Rab1	Red8
21	Qc2	Ne8

Heading for d6 to challenge my best piece, the c4 knight?

22	Rxd8	Rxd8
23	Rd1	Rxd1+
24	Qxd1	

Now my queen controlled the only open file. Due to the pressure exerted on the d5 pawn by my knights, Black's queen and bishop are tied down to its defence. His knight can hardly move. Black has 24 ... Nf6 based on 25 Nfxe5 Nxe4 but after 25 Qd3 instead, the black knight has to retreat e.g. 25 ... Nd7.

Nevertheless, this gives Black more freedom and is preferable to the text move.

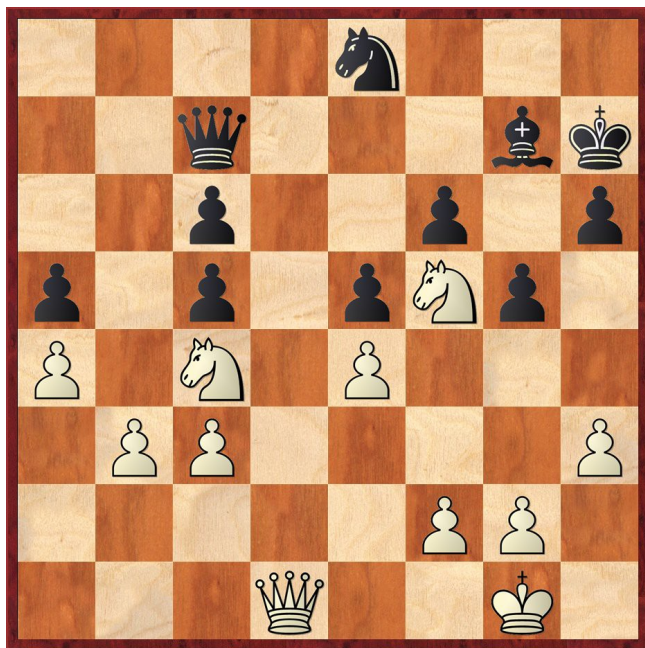
24 ... **f6**

This allowed his knight to move, but only after ...Bf8 or a queen move. It put another pawn on a dark square, making his bad bishop even worse and weakened e6 and g6.

25 **Nh4** **g5**

Weakening more light squares but due to his queen being tied to defence of the a5 pawn, g6 could only be defended by Black's king and 25 ... Kf7/Kh7 26 Qg4 only adds further threats.

26 **Nf5** **Kh7**



As it happens, Black is almost in zugzwang after 27 Qh5. The black knight has to be defended by its queen. 27 ... Qd7 relinquishes the pawn on a5 and 27 ... Qd8 28 Qf7 unleashes a terrible attack - the threat is 29 Ne7 – to which Black has virtually no defensive moves.

Here I decided to try to exchange off Alastair's knight and queen to enter an ending where my knight would be superior to his bishop due to the pawn structure.

27 **Qd2**

The queen moved to a protected square so that after my next move, 28 ... Qd7 would not pin my d6 knight, allowing Black to liberate his knight with 29 ...Nc7.

27 ... **Kg6**

Maybe Black should have prevented the incursion to d6 by 27 ... Bf8.

28 **Nfd6** **Nxd6**

Forced, or he lost the a5 pawn after I exchanged his immobile knight.

29 **Qxd6** **Qxd6**
30 **Nxd6** **Bf8**

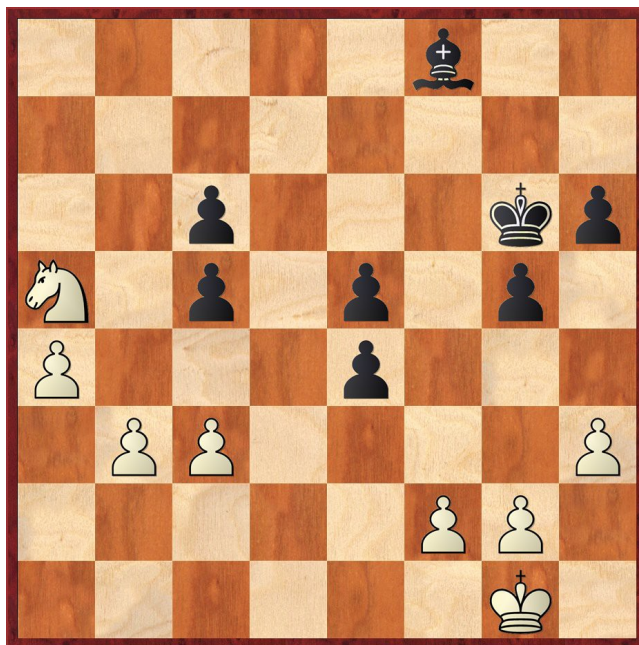
Too late! Even though material is level, software assesses the position as though I were a whole piece

ahead. The knight is good but the bishop is so bad, it is effectively not there at all!

31 **Nb7** **f5**
32 **Nxa5**

Not wasting time with exf5 which would bring his king closer to the centre. My passed a pawn would soon be running and Black would have to give up his bishop for it.

32 ... **fxe4**



33 **Nxc6**

33 Nc4 is possibly even stronger. How can Black stop the a pawn?

33 ... **c4**
34 **bxc4**

34 b4 and 34 Nxe5+ were alternatives, but all roads led to Rome.

34 ... **Bc5**
35 **a5** **e3**
36 **Kf1**

After 36 a6 e2 37 Nxd5+ and Nd3 stopped promotion of Black's pawn, but my knight was needed to shepherd the a pawn. My passed c pawns ensured victory.

36 ... **exf2**
37 **a6** **Kf5**
38 **a7** **Bxa7**
39 **Nxa7** **Ke4**
40 **Kxf2** **1-0**

Ron Jones

New England Chess Club Fixtures 2015-16

Updated 19 August 2015

Club Championship		League Match		Internal Event		
H = home A = away		Fenland Trophy		County Event		
Day	Date	All Club	A Team	B Team	Patriots	Cavaliers
Wed	2 Sep	Club AGM	←	←	←	←
Wed	9 Sep	Round 1	←	←	←	←
Tues	15 Sep					A v Spalding
Wed	16 Sep	Club Ladder	A v Warboys A	←	←	←
Wed	23 Sep	Club Ladder	↔	H v Buckden	←	←
Wed	30 Sep	Club Ladder	↔	↔	A v Warboys	←
Wed	7 Oct	Club Ladder	H v Royston	←	←	←
Sun	11 Oct	County Rapidplay	←	←	←	←
Wed	14 Oct	Club Ladder	↔	H v Spalding	←	←
Mon	19 Oct					A v Godmanch'r
Wed	21 Oct	Club Ladder	H v Pboro A	←	←	←
Wed	28 Oct	→	→	→	H v Cavaliers	A v Patriots
Mon	2 Nov		A v St Neots			
Wed	4 Nov	Club Ladder	↔	A v Warboys C	←	←
Wed	11 Nov	Club Ladder	↔	A v Warboys B	←	←
Wed	18 Nov	Club Ladder	H v St Neots	←	←	←
Wed	25 Nov	Club Ladder	H v Cambs	←	←	←
Sat	28 Nov	County Champ	←	←	←	←
Sun	29 Nov	Pboro	←	←	←	←
Wed	2 Dec	Round 2	←	←		
Thurs	3 Dec		A v Pboro B			
Wed	9 Dec	→	→	→	H v Spalding	H v Godmanch'r
Wed	16 Dec	Club Ladder	↔	H v Pboro C	←	←
Wed	23 Dec	Xmas Special	←	←	←	←
Wed	31 Dec	No meeting				
Wed	6 Jan	→	→	→	A v Cavaliers	H v Patriots
Wed	13 Jan	Club Ladder	↔	↔	↔	A v Warboys
Thurs	14 Jan		A v Pboro A			
Mon	18 Jan				A v Godmanch'r	
Wed	20 Jan	Club Ladder	H v Warboys A	←	←	←
Mon	25 Jan			A v Buckden		
Wed	27 Jan	→	→	→	H v Warboys	H v Spalding
Mon	1 Feb		A v Royston			
Wed	3 Feb	Round 3	←	←	←	←
Tues	9 Feb			A v Spalding		
Wed	10 Feb	Handicap	←	←	←	←
Mon	15 Feb		A v St Neots			
Wed	17 Feb	Rapidplay	←	←	←	←
Thurs	18 Feb			A v Pboro C		
Tues	23 Feb				A v Spalding	
Wed	24 Feb	Club Ladder	H v Pboro B	←	←	←
Wed	2 Mar	→	→	→	H v Godmanch'r	H v Warboys
Wed	9 Mar	Club Ladder	↔	H v Warboys C	←	←
Wed	16 Mar	Round 4	←	←	←	←
Wed	23 Mar	Club Ladder	Fenland Rd 2	←	←	←
Wed	30 Mar	Club Ladder	←	←	←	←
Wed	6 Apr	Club Ladder	↔	H v Warboys B	←	←
Wed	13 Apr	Round 5	←	←	←	←
Wed	20 Apr	Club Ladder	A v Cambs	←	←	←
Wed	27 Apr	Club Ladder	←	←	←	←
Wed	4 May	Problem Night	←	←	←	←
Wed	11 May	Round 6	←	←	←	←
Wed	18 May	Mini-Lightning	←	←	←	←
Wed	25 May	Masterclasses and Summer Sprint until 26 Aug			←	←