

New Englander

Chess Club Update – April 2019

Chairman's Chatter

Although the A team has only now notched up its first victory, we have been successful elsewhere. Cavaliers have a title decider in the coming month against Warboys for the Team 550 (North) division and Patriots will play in the final of the Fenland Plate during May. With other cup fixtures, there have been some necessary alterations to the end of season schedule so please note the revised *Diary Dates*.

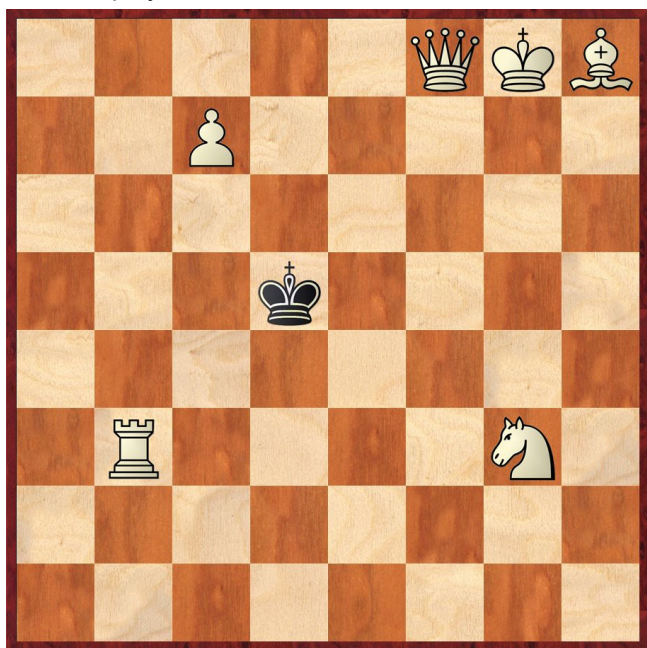
Paul Hanks

Diary Dates

15th April St Neots v New England A in the Semi-final of the Fenland Knock-Out
 24th April Club Handicap tournament
 30th April Spalding v Patriots re-arrangement
 13th/20th May Proposed dates for St Neots v Patriots in the Fenland Plate final

Puzzle Problem

White to play and mate in 2



Last Month's solution (Serafimovic 2018)

Position :1N1b1r1/3R1PB1/4k1P1/4N2R/8/1n2n3/6b1/5QK
1 Nf3 Bg5 2 Nxg5# [1 ... Bf6 2 Qa6#; 1 ... Ng4/c4/g5
 2 Qc4#; 1 ... other 2 Re5#]

Website to Watch

Shamkir in Azerbaijan hosts ten top grandmasters including Carlsen in the sixth Gashimov Memorial tournament. It takes place from 30th March to 9th April and can be followed on <http://shamkirchess.com/>.

Website : www.newenglandchess.org.uk

Closer to home, Karlsruhe and Baden-Baden in Germany share the Grenke Chess Classic. It is an opportunity to see how Keymer (born 2004) fares against Carlsen, Caruana, Anand and others. Watch the action between 20th and 29th April at the website <http://www.grenkechessclassic.de/en/>.

Result Round-up

Cambridgeshire County Chess Leagues

New England A	3	Warboys A	2
J Dillely	½	M Misson	½
P Hanks	½	B Duff	½
R Ilett	½	J Beck	½
P Spencer	½	N Greenwood	½
C Russell	1	D Polehonski	0

Spalding	1	New England B	3
P Szutkowski	0	P Turp	1
J van Gemeren	0	J Sadler	1
J Smith	½	R Jones	½
R Coats	½	D Lane	½

New England B	P	St Neots B	P
Re-arranged for 17 th April 2019			

Team 550 Competition

Spalding	2	NE Cavaliers	2
J van Gemeren	½	P Turp	½
P Szutkowski	1	J Sadler	0
J Smith	½	R Jones	½
T Bennett	0	M Tarabad	1

NE Patriots	1½	Warboys	2½
R Ilett	1	B Duff	0
P Spencer	½	J Beck	½
C Russell	0	M Onyons	1
P Weinberger	0	D Polehonski	1

Godmanchester	1½	NE Cavaliers	2½
J Wright	0	J Sadler	1
M English	1	R Jones	0
B Rhodes	½	P Weinberger	½
B Smith	0	M Tarabad	1

Warboys	2½	NE Patriots	1½
B Duff	0	R Ilett	1
J Beck	1	C Russell	0
P Baddeley	½	S Wozniak	½
K Harbour	1	J Parker	0

Club Championship

Round 4			
N Wedley (1)	P	P	R Jones (1½)

Round 5			
J Sutherland (1½)	0	1	J Sadler (3)
R Jones (1½+P)	½	½	P Hanks (3½)
J Sadler (4)	1	0	C Russell (2½)
P Spencer (3½)	P	P	P Turp (2½)

Round 6			
J Sadler (5)	P	P	P Walker (4)
E Knox (3)	P	P	P Spencer (3½+P)

Round 7			
P Weinberger (3)	P	P	T Ingram (1½+P)
P Walker (4+P)	P	P	P Spencer (3½+2P)

Redraw			
T Ingram (Rd 5)	0	1	R Jones (Rd 3)
D Lane (Rd 4)			J Sutherland (Rd 6)

Round 8			
J Sadler (5+P)			P Hanks (6)
R Jones (4+P)			R Ilett (4½)
E Knox (4+P)			P Walker (4+2P)
P Spencer (3½+3P)			C Russell (3½)
S Wozniak (3½)			M Tarabad (3½)
P Weinberg'r (3+P)			P Turp (3½+P)
J Suth'land (1½+P)			E Smith (2)
D Lane (1+P)			S Walker (2½)
J Parker (1)			T Ingram (1½+P)
N Wedley (2½+P)	Played in Round 7		
Match night : 1 st May		Deadline : 28 th May	

New England Club Ladder

White		Black	
M Tarabad	0	1	J Sadler
M Tarabad	½	½	J Sadler

Position	Change		Player	Record @ 27/03/19
	Month	Overall		
1	-	+2	P Walker	½,1,½,1,0,1,1
2	-	-	J Parker	0,0,1
3	-	+10	J Sadler	0,1,1,1,½
4	-	+6	N Wedley	0,1,0,0
5	+2	+1	M Tarabad	1,0,1,1,1,1,0,0,½
6	-1	-5	P Spencer	1,½,½,1
7	-1	+1	R Ilett	1,1,1
8	+1	+3	E Smith	0,0,0,0
9	-1	-5	T Ingram	0,1
10	-	-1	D Lane	0,1,0,0
11	-	+1	P Weinberger	0
12	-	-7	P Hanks	0
13	-	-6	P O'Gorman	0

New England Grand Prix

Player	Champ	Ladder	League	Cup	550 Team	Total	TPR*
R Ilett	4½	3	2	2	4	15½	165
M Tarabad	3½	5½		0	5½	14½	112
P Spencer	3½	3	4		3½	14	146
J Sadler	5	3½	1½		3	13½	130
P Hanks	6	0	2	2	1	11	162
C Russell	3½		5½	0	1½	10½	118
P Walker	4	5	1			10	169
P Turp	3½		1½	0	2½	7½	131
P Weinberger	3	0	1		3	7	97
E Knox	4				2½	6½	113
S Walker	2½		1		2	5½	88
R Jones	4		1		1	6	109
S Wozniak	3½				1½	5	118
J Dille			4½			4½	205
N Wedley	1½	1		½	1	4	94
D Lane	1	1	½		1	3½	90
J Parker	1	1			1	3	69
J Sutherland	1½				1	2½	95
T Ingram	1½	1				2½	86
M Ingram				½	1½	2	82
E Smith	2	0			0	2	61
P O'Gorman	1	0				1	74

* Tournament Performance Rating is approximate

Match of the Month

I am happy to present a recent game against one of our club's promising younger players that includes an often recurring theme - "the classic bishop's sacrifice." This has featured in a number of recent newsletters in the *Eye Opener* section and it is interesting to see how many of the attacking themes carry over from totally different starting positions.

Ray Ilett v Jonathan Sadler

New England Club Championship; 20.02.19

1 **d4** **d5**
2 **c4** **Nf6**

The main purpose of the Queen's Gambit is to deflect Black's d pawn so that White can dominate the centre with e2-e4. As Nigel Short demonstrated in defeating Anatoly Karpov in 1992, accepting the offered pawn with 2 ... dxc4 is feasible provided Black follows up actively e.g. 2 ... cxd4 3 e4 Nf6 4 e5 Nd5 5 Bxc4 Nb6 6 Bd3 Nc6 7 Be3 Nb4 8 Be4 f5 9 exf6 exf6.

Here, by declining to play 2 ... e6 or 2 ... c6, Black will have to recapture on d5 with a piece inviting White to continue his strategy.

3 **cxd5** **Qxd5**

Playable but White will develop the queen's knight with tempo securing some advantage. The game is almost like a Scandinavian Defence (1 e4 d5 2 exd5 Qxd5 3 Nc3 Qa5) but in that case, White's centre has already been depleted.

4 **Nc3** **Qa5**
5 **Bd2**

More developing with tempo, as the black queen will have to move again soon.

5 ... **e6**

Here 5 ... Qb6 or 5 ... c5 are stronger.

6 **e4** **Bb4**
7 **Nf3** **Qb6**

Here 7 ... 0-0 is more precise.

8 **Bd3**

White only has to just keep developing naturally and has a clear advantage.

8 ... **Nc6**

This does put some pressure on White's d pawn but is quickly rebuffed.

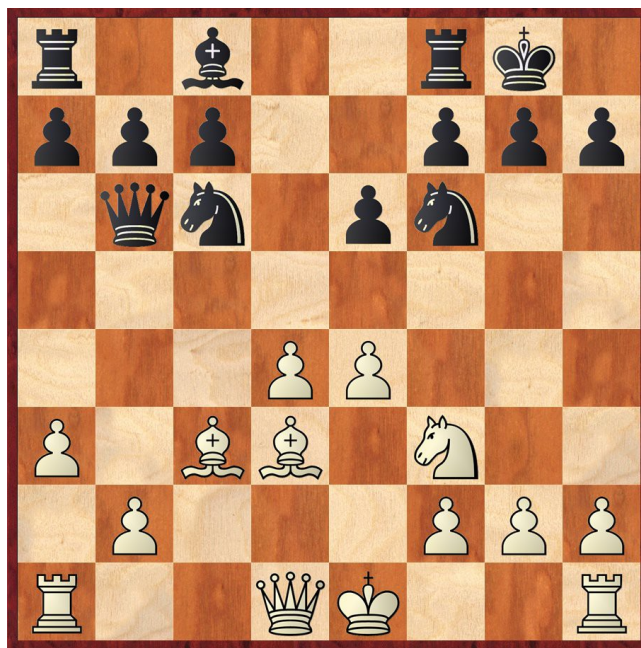
9 **a3** **Bxc3**

A sad necessity. 9 ... Ba4? 10 b4 wins the bishop whereas after 9 ... Be7? 10 Na4, the black queen has no squares.

10 **Bxc3**

White has a lot of positives in this position - more space, superior development, the bishop pair pointing at Black's king. Note that the defending black knight on f6 can be pushed away by e5.

10 ... **0-0**



11 **e5!**

This move is quite committal because it opens the d5 square to Black's knights and if he can survive the onslaught, his prospects will be fine. There were more long-term positional options in 11 0-0 or 11 b4 but I felt my advantage justified going for a sacrificial attack. Besides, a shorter game will tend to give me fewer opportunities to make mistakes!

11 ... **Nd5**
12 **Bxh7+!**

With so little activity for Black and important defenders over on the queenside, White can afford to give up material for an attack. Thankfully, after a few seconds of doubt, Fritz agrees and even changes its mind considering 11 ... Nh5 as how Black should have avoided this line.

12 ... **Kxh7**

Declining the sacrifice 12 ... Kh8 13 Bc2 g6 14 Qd2 Kg7 15 h4 just gives me an extra pawn and an attack.

13 **Ng5+** **Kh6**

13 ... Kg8 can be discounted quickly because it leads to a standard checkmate procedure - 14 Qh5 Rd8 15 Qxf7+ Kh8 16 Qh5+ Kg8 17 Qh7+ Kf8 18 Qh8+ Ke7 19 Qxg7+ Ke8 20 Qf7#.

13 ... Kg6 14 Qg4 wins for White when Black has to escape the checkmate starting 15 Ne6+. The obvious try is unsuccessful after 14 ... f5 15 Qh4

- 15 ... Nxc3 16 Rf1 (with the threat 17 Qh7+ Kxg5 18 f4+ Kg4 19 Qh3#) 16 ... f4 17 Qh7+ Kxg5 18 h4+ Kg4 19 Qg6+ Kxh4 20 Rh1#
- 15 ... Rh8 16 Qxh8 Kxg5 17 Qxg7+ Kf4 (17 ... Kh4 18 Qh6+ Kg4 19 f3#; 17 ... Kh5 18 h4) 18 Qg3+ Ke4 19 Qf3#
- other moves just give up material e.g. 15 ... Nf6.

The most creative defence is 14 ... Nxe5 15 dxe5 Ne3 but it leads nowhere due to 15 Qe4+ (15 fxe3??)

Qxe3+ and 16 ... Qxg5) 15 ... Nf5 (15 ... Kxg5 16 h4+ Kh6 17 Bd2) 16 g4.

14 **Bd2?**

Logical but a mistake. 14 Qg4 is correct with the threat of 15 Qh4+ Kg6 16 Bd2 followed by 17 Qh7#. Black can intervene in a number of ways but the patterns look horribly familiar e.g. 14 ... Nxc3 15 bxc3 and how does my opponent cope with 16 Qh4+ Kg6 17 Qh7+ Kxg5 18 Qxg7+ Kf4 (18 ... Kh5 19 h4; 18 Kh4 19 Qh6+ Kg4 20 f3+ Kf5 21 Qf6#) 19 Qf6+ Kg4 (19 ... Ke4 20 Qf3#) 20 h3+ Kh5 21 g4#?

14 ... **Kg6**

Black should capture with 14 ... Qxb2 obtaining counterplay.

15 **h4!**

Threatens to win with 16 h5+ Kf4 (16 ... Kh6 17 Qc2 with 18 Qh7+ or 18 Nxf7+ Rxf7 19 Qxg6# to follow – even after 17 ... Nf4) 17 g4#.

15 ... **Rh8**

16 **Qg4**

Good enough to win. 16 h5+ was also good - Black cannot capture 16 ... Rxh5 17 Qxh5+ Kf5 18 g4# and 16 ... Kh6 transposes into the previous note.

16 ... **Nf6!?**

Not a bad try, returning some material.

17 **exf6** **Kxf6**

Not 17 ... gxf6 18 Nxe6+ Kh7 19 Qg7#.

18 **Qf4+** **Ke7**

19 **Qxf7+** **Kd6**

White now has a clearly won position, the remaining moves were :-

20	Qxg7	Re8
21	Ne4+	Kd5
22	Nf6+	Kc4
23	Nxe8	Qxd4
24	Rc1+	Kb3
25	Qxd4	Nxd4
26	Bc3	Nc2
27	Kd2	e5
28	Nxc7	Bf5
29	Nxa8	1-0

Ray Ilett

Eye Opener

Here is a short example of the Queen's Gambit Accepted. Note that Black confronts White's centre pawn as early as move 5 so that White can never hope to build a preponderance.

H Degro v M-V Foisor
Hastings 2013-14

1	Nf3	d5
2	d4	Nf6
3	c4	dx4

The standard gambit is 1 d4 d5 2 c4 dxc4 but here, with the extra move, White cannot respond the gambit acceptance with 4 e4.

4	e3	e6
---	-----------	-----------

5	Bxc4	c5
6	0-0	a6
7	a4	

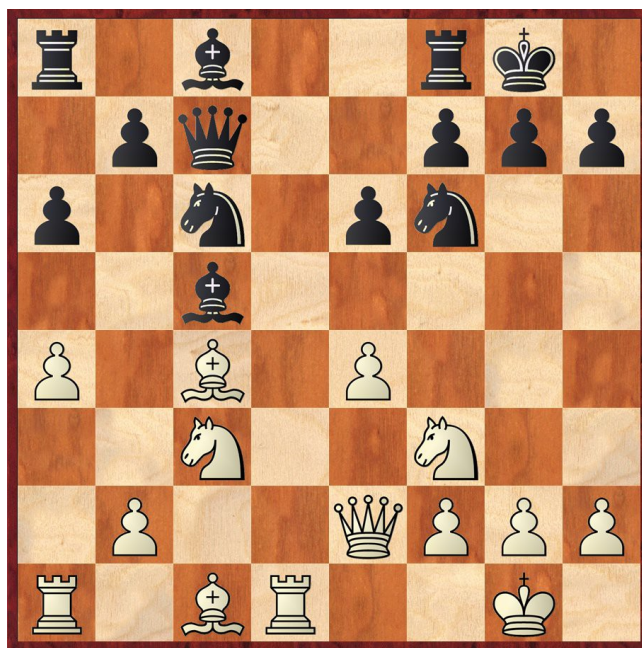
Maybe this was unnecessary as 7 ... b5 was not yet feasible.

7	...	Nc6
8	Qe2	Be7
9	Rd1	Qc7
10	Nc3	0-0

So far, both sides have developed normally. What could White possibly have to fear?

11	dx5	Bxc5
12	e4	

If White had sensed any danger, he might have tried 12 h3.



12	...	Ng4
13	Rf1	

The penny has still failed to drop. 13 Be3 was required even though it looks bad positionally after 13 Nxe3 14 fxe3.

13	...	Nd4	0-1
----	------------	------------	------------

Suddenly, White's position collapses. Black's impudent knight cannot be taken i.e. 14 Nxd4 Qxh2# and mate also follows any queen move e.g. 14 Qd3 Nxf3+ 15 Qxf3 Qxh2#. That only leaves defensive moves such as 14 g3 but after 14 ... Nxe2+, it is not worth playing on.