

New Englander

Chess Club Update – November 2019

Chairman's Chatter

Both league matches and the club championship are suffering a rash of postponements. These are not always our fault but I do urge you to make efforts to make timely re-arrangements. Otherwise, the fixture congestion will make our calendar of events suffer.

Paul Hanks

Diary Dates

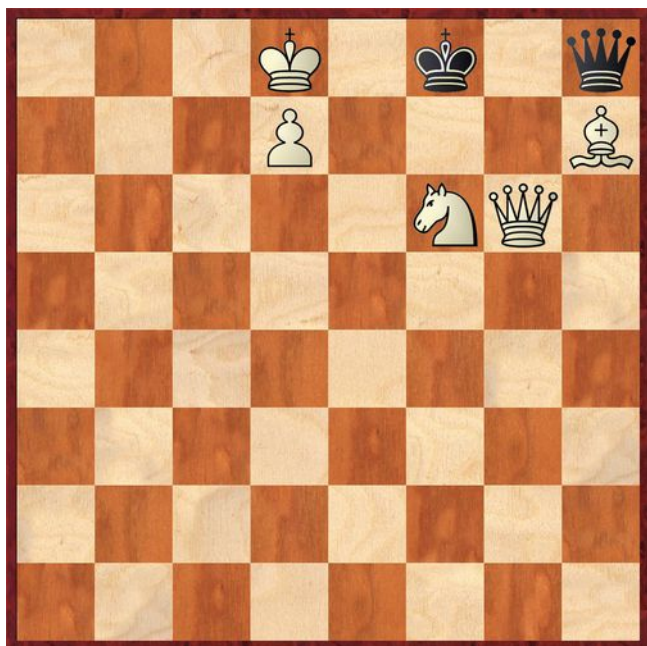
20th November Patriots v St Neots (Fenland 550)

11th December Cavaliers v P'borough (Fenland 550)

18th December Club Christmas Special – fun chess with refreshments

Puzzle Problem

White to play and mate in 2



Last Month's solution (Locker 1967)

Position : k7/8/K1N5/8/8/8/1b6/1Q6

1 Qg1 Bd4 2 Qg8# [1 ... Bg7 2 Qa7#]

Website to Watch

If you need an excuse for visiting Hamburg, the 3rd FIDE Grand Prix takes place there from 5th November. It is a knock-out event with 16 top grandmaster culminating in a final on 15th-17th. The event can be followed on www.worldchess.com.

There may have been a mistake in the last newsletter as the announcement of the European Club Cup from 10th-16th in Montenegro was a month too early! Its website is <http://sahcg.me/euclubcup/>.

Result Round-up

Cambridgeshire County Chess Leagues

| Peterborough A | 4 | New England A | 1 |
|----------------|---|---------------|---|
| C Tandy | 1 | J Dille | 0 |
| S Caraway | ½ | R Ilett | ½ |
| M Dunkley | ½ | P Hanks | ½ |
| D Browning | 1 | E Knox | 0 |
| A Richards | 1 | C Russell | 0 |

| New England B | 1 | Spalding | 3 |
|---------------|---|--------------|---|
| P Spencer | 0 | P Cusick | 1 |
| P Turp | ½ | P Szutkowski | ½ |
| E Knox | 0 | T Nottingham | 1 |
| R Jones | ½ | R Coates | ½ |

| Warboys B | P | New England B | P |
|-----------|---|---------------|---|
|-----------|---|---------------|---|

Team 550 Competition

| NE Cavaliers | 1½ | Warboys WC | 2½ |
|--------------|----|--------------|----|
| R Ilett | ½ | C Watkins | ½ |
| E Knox | 0 | B Duff | 1 |
| M Tarabad | 0 | D Polehonski | 1 |
| J Sutherland | 1 | James Beck | 0 |

| Warboys WC | 2½ | NE Patriots | 1½ |
|--------------|----|-------------|----|
| C Watkins | ½ | P Hanks | ½ |
| B Duff | 1 | P Turp | 0 |
| D Polehonski | 1 | C Russell | 0 |
| K Harbour | 0 | S Wozniak | 1 |

| NE Cavaliers | P | Spalding | P |
|---|---|----------|---|
| Provisional date : 26 th February 2020 | | | |

New England Club Ladder

| Position | Change | | Player | Record @ 30/10/19 |
|----------|--------|---------|--------------|-------------------|
| | Month | Overall | | |
| 1 | +2 | +3 | J Sadler | ½,1 |
| 2 | -1 | -1 | P Spencer | 1 |
| 3 | -1 | -1 | P Weinberger | 0 |
| 4 | - | -1 | M Tarabad | ½,0 |

Club Championship

| Round 1 | | | |
|--------------------|---|---|-----------------|
| E Knox | P | P | M Tarabad |
| J Sutherland | P | P | R Ilett |
| E Smith | 0 | 1 | S Wozniak |
| Round 2 | | | |
| D Lane (0) | P | P | P Hanks (1) |
| R Ilett (P) | P | P | R Jones (1) |
| C Russell (½) | P | P | P Turp (1) |
| Round 3 | | | |
| E Knox (1+P) | P | P | R Ilett (2P) |
| S Wozniak (2) | P | P | P Turp (1+P) |
| P Hanks (1+P) | P | P | S Walker (1½) |
| R Jones (1+P) | P | P | P Spencer (1) |
| T Ingram (½) | 0 | 1 | N Wedley (½) |
| P Weinberger (½) | 0 | 1 | C Russell (½+P) |
| J Sutherland (½+P) | P | P | M Tarabad (0+P) |
| E Smith (0) | P | P | D Lane (0+P) |

New England Grand Prix

| Player | Champ | Ladder | League | Cup | 550 Team | Total | TPR* |
|-----------------|-------|--------|--------|-----|----------|-------|------|
| P Spencer | 1 | 1 | ½ | | 1 | 3½ | 142 |
| R Jones | 1 | | 1½ | | 1 | 3½ | 141 |
| S Wozniak | 2 | | | | 1 | 3 | 135 |
| R Ilett | | | 2 | | ½ | 2½ | 172 |
| J Sadler | | 1½ | | | 1 | 2½ | 146 |
| C Russell | 1½ | | ½ | | 0 | 2 | 104 |
| P Hanks | 1 | | ½ | | ½ | 2 | 162 |
| N Wedley | 1½ | | | | | 1½ | 100 |
| J Sutherland | ½ | | | | 1 | 1½ | 105 |
| P Turp | 1 | | ½ | | | 1½ | 136 |
| S Walker | 1½ | | | | | 1½ | 117 |
| M Tarabad | 0 | ½ | | | 1 | 1½ | 103 |
| P Weinberger | ½ | 0 | 1 | | 0 | 1½ | 85 |
| E Knox | 1 | | 0 | | 0 | 1 | 115 |
| J Dilley | | | 1 | | | 1 | 177 |
| T Ingram | ½ | | | | | ½ | 70 |
| E Smith | 0 | | | | | 0 | 46 |
| M Ingram | | | | | 0 | 0 | 58 |
| D Lane | 0 | | | | | 0 | 80 |
| A Bhattacharyya | 0 | | | | | 0 | 30 |

* Tournament Performance Rating is approximate

Chairman's Challenge

| White | | Black | |
|-----------------|---|-------|-----------------|
| A Bhattacharyya | P | P | E Smith |
| J Sutherland | P | P | A Bhattacharyya |

| Player | AB | ES | SW | MT | NW | ANO | JS | Tot |
|-----------------|-------|-------|-------|-------|-------|-------|-------|-----|
| A Bhattacharyya | X | P | 0 | 6/11 | 11/12 | 12/2 | P | 0 |
| E Smith | P | X | 27/11 | 11/3 | 8/1 | 8/1 | 11/3 | |
| S Wozniak | 1 | 27/11 | X | 11/3 | 8/1 | 8/1 | 11/3 | 1 |
| M Tarabad | 6/11 | 11/3 | 11/3 | X | 27/11 | 27/11 | 8/1 | |
| N Wedley | 11/12 | 8/1 | 8/1 | 27/11 | X | 11/3 | 27/11 | |
| Replacement? | 12/2 | 8/1 | 8/1 | 27/11 | 11/3 | X | 27/11 | |
| J Sutherland | P | 11/3 | 11/3 | 8/1 | 27/11 | 27/11 | X | |

Match of the Month

Des Lane v S Walker

New England Club Championship Rd 8; 01:05:2019

1 c4 Nf6
2 d4 c5

Des is my old nemesis and I have seldom beaten him especially with Black! In queen's pawn openings, I have tried the King's Indian Defence against Des with limited success and thought I needed to try something different.

3 d5

I had prepared for 3 dxc5 and was also expecting a move like 3 Nf3. This move, though fairly standard, surprised me as I had done no research on it and it closed up the game.

3 ... b6

This is a rare move. In the Benoni Defence, Black usually tries to combine active play on the long a1-h8 diagonal with threats down the open e file. To achieve the latter, he proceeds d7-d6 and e7-e6 to initiate a pawn swap and it is helpful for the light-squared bishop to support the e6 square. As a result, I had thought my opening would not appear on a games database but there are three entries featuring the move order 1 Nf3 d5 2 b3 c5 3 c4 d4 i.e. essentially our position with colours reversed!

4 Nc3 g6
5 h3

This looks like the loss of an important tempo. In most games with these structures, Black's occupation of the dark squares (and conversely after e2-e4, White's superiority on the light squares) means that my queen's bishop has little scope and the text move would deprive me of g4 - its last hope on the c8-h3 diagonal. Here specifically, with my third move, I have already shown that the bishop has options elsewhere.

5 ... Bg7
6 Qc2 0-0
7 Bf4 d6
8 Nf3 Nbd7

9 e4 Nh5!?

Until now, both sides have developed logically without going for critical variations e.g. White pushing for e2-e4-e5 at an earlier stage. Despite the uncastled white king, I have refrained from e7-e6 and have recently made that advance difficult for myself. My plan is to open the centre by other means.

10 Bh2 f5
11 Be2 fxe4



12 Nxe4

Due to my evil intentions on the f4 square, Fritz prefers White to keep control with 12 Qxe4. The point is that the tempting 12 ... Ndf6 runs into the calm 13 Qe3 when I have to cope with the threat of 14 g4 by retreating. However, I also have a tactical resource after 12 ... Nhf6 13 Qe6+ Kh8 14 Ng5 with 14 ... Ne5 defending f7 and trapping the white queen.

12 ... Nf4
13 Bxf4 Rxf4
14 g3

There is no need to hurry this move and if White had ambitions of a kingside attack, 14 0-0-0 would have brought his last piece into play. If I had continued 14 ... Ne5, 15 Nxe5 Bxe5 16 g3 Rf8 17 f4 would have been the start of pawn storm on that flank.

14 ... Rf8
15 Nfg5 Ne5
16 f4 Nf7
17 Bg4

Des has accumulated a handy space advantage and has to make a strategic decision about how to exploit it. If he still intends a kingside attack, perhaps he should have considered 17 h4 to deter 17 ... Nxc5 18 hxg5 when the open h file looks dangerous. It also opens the possibility of h4-h5 subsequently.

Instead, Des opts for the occupation of the e6 square. It also seems reasonable but there is a problem here. To end up with the desired fork of queen and rook, he

needs to play Ng5-e6 and after Bc8xe6, recapture on that square with a knight. Sadly, there is no route currently for both horses to reach the winning post.

17 ... Nxc5



Almost forced. In my cramped position, I have few constructive options. One would have been to swallow my pride and admit the loss of tempo at move 3 with 17 ... b5 when 18 cxb5 allows me to recover the pawn with 18 ... Qa4+ and get my queen away from the killing zone. However, I should expect Des to maintain the pressure with 18 Be6. It is interesting to speculate whether my nerves would have sufficient confidence in my defence to continue 18 ... Qa5+ 19 Kf1 Rb8 20 Bxf7+ Rxf7 21 Nxf7 bxc4. I am the exchange down (the knight on f7 is doomed) but have a nasty counterattack on b2 and Bc8-a6 (hurrah for move 3!) looks unpleasant.

18 Bxc8?

An unfortunate blunder which negates all the previous hard work. After 18 Nxc5, White is close to successful occupation of e6 and I would have to be careful with 18 ... b5 (18 ... Bxc4 fatally weakens the h file e.g. 19 hxg4 h6 20 Rxh6) 19 Be6+

- 19 ... Kh8 is a flimsy lifeline though White may be tempted by 20 Nf7+ Rxf7 21 Bxf7 Bf5 when Black has ample compensation. White would need the restraint to play 20 h4 Qa5+ 21 Ke2 (not obvious but rated best by Fritz to activate the queen's rook) 21 ... Qb4 22 h5. White is much better but the queen exchange should mean I survive the assault.
- 19 ... Bxe6 20 Nxe6 Qa5+ when White could test my endgame technique with 21 Qd2 Qxd2 22 Kxd2 Rf7 23 cxb5 or strive for further complications with a king move. Fritz suggests there is more joy (for White!) in the former approach.

In many of these lines, I am lucky to have a saving check which routine castling by White would have

denied me. Now, I have some simple knight jumps to win a piece and see if I can avoid reciprocating Des's largesse.

| | | |
|----|-----|------|
| 18 | ... | Nf3+ |
| 19 | Kf2 | Nd4 |
| 20 | Qd2 | Qxc8 |
| 21 | Ng5 | Qf5 |

This sets a simple trap which Des overlooks.

| | | |
|----|-------|------|
| 22 | Rae1? | Qxg5 |
|----|-------|------|

Another gift shows how hard it is psychologically to switch from attack to desperate defence. 22 h4 might have rekindled some of the previous options but with 22 ... h6, I now have sufficient force to beat off any last-gasp attempts. Game over...

| | | |
|----|-----|-----|
| 23 | Kg2 | Qf6 |
|----|-----|-----|

With my material advantage, the game can continue smoothly and no commentary is really necessary over the routine last 15 moves as I deliver checkmate.

| | | |
|----|------|-------|
| 24 | Rhf1 | Rae8 |
| 25 | Rf2 | Nf5 |
| 26 | Re4 | Nd4 |
| 27 | Qe3 | Nf5 |
| 28 | Qd2 | e6 |
| 29 | dxe6 | Rxe6 |
| 30 | Qd5 | Rfe8 |
| 31 | Rfe2 | Nd4 |
| 32 | R2e3 | Kh8 |
| 33 | b3 | Rxe4 |
| 34 | Rxe4 | Rxe4 |
| 35 | Qxe4 | Nf5 |
| 36 | Kf3 | Qc3+ |
| 37 | Kg4 | Qxg3# |

Steve Walker/Paul Hanks

Eye Opener

The Modern Benoni Defence is known for being a feisty opening. Its heyday at grandmaster level was probably in the 'eighties before computers could weave a way through the tactical complications (for instance, see Sokolov v Topalov, Wijk aan Zee 1996). At club level, where preparation and memory count less, it is still a practical proposition especially when there are devilish pranks to be played...

L Spassov v A Adorjan Sochi 1977

| | | |
|---|------|------|
| 1 | d4 | Nf6 |
| 2 | c4 | c5 |
| 3 | d5 | d6 |
| 4 | Nf3 | g6 |
| 5 | g3 | Bg7 |
| 6 | Bg2 | b5 |
| 7 | cxb5 | a6 |
| 8 | bxa6 | Qa5+ |

White thinks he has the a5-e1 diagonal covered by a clever resource.

| | | |
|----|-----|---------|
| 9 | Nc3 | Ne4 |
| 10 | Qc2 | Nxc3 |
| 11 | Bd2 | Qa4 0-1 |

Black does not necessarily escape an early demise.

J Scott v C Benham

Correspondence 1985

| | | |
|----|------|------|
| 1 | d4 | Nf6 |
| 2 | c4 | c5 |
| 3 | d5 | b5 |
| 4 | Nf3 | Bb7 |
| 5 | a4 | a6 |
| 6 | axb5 | axb5 |
| 7 | Rxa8 | Bxa8 |
| 8 | Nc3 | b4 |
| 9 | Nb5 | d6 |
| 10 | Qa4 | Nbd7 |
| 11 | Qa7 | |

Of course, White also has the equivalent 11 Qxa8 Qxa8 12 Nc7+ but can wait to see if Black makes another error.

| | | |
|----|-------|-----|
| 11 | ... | Qb8 |
| 12 | Qxb8+ | 0-1 |



At first, this might seem puzzling. After 12 ... Nxb8 13 Nc7+ Kd8 14 Nxa8 Nbd7, is not the white knight trapped? Black's problem is that recapture takes so many tempi that White can easily gain other advantages e.g. 15 Ng5 Rg8 16 Nxf7+ Kc8 17 g4 h6 (17 ... Nxg4 18 Bh3) 18 h4 and eventually g4-g5 and Bf1-h3 will free the knight.