

New Englander

Chess Club Update – June 2022

Chairman's Chatter

Here is the end-of-season bumper edition!

First of all, congratulations go to the winners of our club competitions. Peter Walker is the clear and worthy champion and also heads the Grand Prix but in the latter case, only by a half point ahead of Paul Spencer. Newcomer Jim Jennings wins the club Ladder to reward his commitment to regular play.

Honours Board 2021-22

Club Champion	P Walker	PS/RI
Ladder	J Jennings	P Walker
Grand Prix	P Walker	P Spencer
Rapidplay	P Spencer	RI/PW/JS
Lightning	P Walker	P Hanks
Problem Night	E Knox & R Ilett	P Turp & M Tarabad

Our teams in the County events were also very successful. The A team clinched victory in Cambridgeshire Division One with two matches to spare, the B team and Team 7000 only missed out on tiebreak and we lost the final of the Fenland Plate.

Thanks to everyone who participated. I hope next season will go just as well - if not better!

Paul Hanks

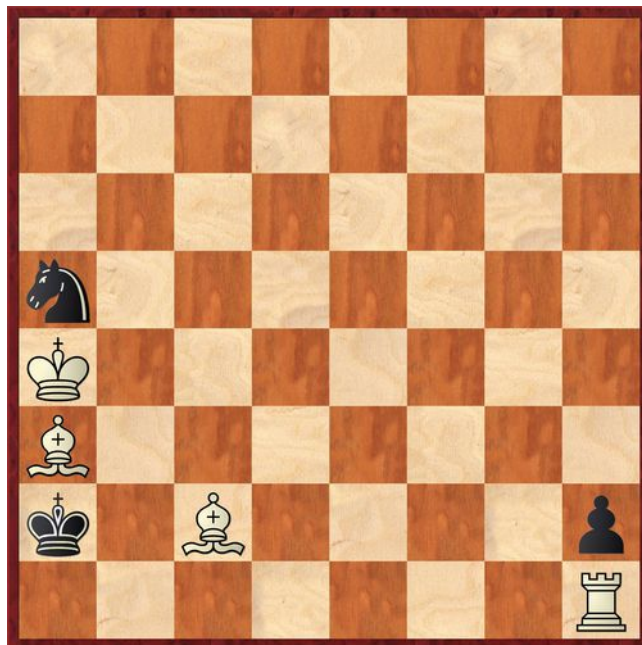
AGM Summary

The club Annual General Meeting took place on 25th May with seven members in attendance. The principal discussion points were :-

- due to the cost of room hire and the reduced membership, the club lost £160 during the year. Subscriptions were raised to £60p.a. for the coming season starting in September
- captains reported the success of the teams including winning the CCCA Division 1 and near misses on tie-break in Division 2 and the Fenland 7000 trophies as catalogued elsewhere in this newsletter
- the committee was re-elected en bloc
- team entries to the Cambridgeshire competitions and internal events will mirror the activity of the past season
- the coronavirus protocol was rescinded
- recruitment was highlighted as a priority. Initiatives would include appeals to past members, approaching the new University, advertising in the venue, on local social media and free community magazines.

Puzzle Problem

White to play and mate in 2



Last Month's solution (Kiselev 1965)

Position : 5K1k/3P3p/7n/8/8/8/8/8

1 d8N N any 2 Nf7#

Website to Watch

There are two major tournaments in June. The strong Norway Chess event starts on 30th May with a blitz competition and classical play starts the next day. Ten top grandmasters including Carlsen, Anand, So and Mamedyarov contest the nine rounds until 10th June. Details on <https://norwaychess.no/en/players-2022/> will contain a link to live chess on chess24.com.

The FIDE Candidates tournament to decide the next challenger to Magnus Carlsen will be held in Madrid with play starting on 17th June. I hope there will be some fighting chess in its 14 rounds until 4th July. As an event sponsor, chess.com will probably be best for viewing and joining instructions for various channels (Twitch/YouTube etc) appear on the webpage <https://www.chess.com/article/view/fide-candidates-chess-tournament-2022#watch>.

Diary Dates

- | | |
|---------------------------|---|
| 29 th June | CCCA AGM at Warboys |
| 1 st September | ECF membership renewal due |
| 7 th September | Start of new season, probably with the club Rapidplay |

Result Round-up

Cambridgeshire League

New England B	2	St Neots B	2
P Spencer	1	C Emery	0
R Jones	½	D Rice	½
C Russell	½	R McMorran	½
J Jennings	0	T Holmes	1

St Neots B	4	New England B	0
C Emery	1	P Spencer	0
D Rice	1	C Russell	0
J Greiller	1	N Wedley	0
R McMorran	1	J Jennings	0

Fenland Plate

NE Patriots	1½	St Neots	2½
P Walker	½	A Chapman	½
P Spencer	1	D Rice	0
E Knox	0	R McMorran	1
C Russell	0	A Gough	1

Division One	P	W	D	L	Games	Pts
New England A	9	5	3	1	26½	13
St Neots A	9	5	1	3	24½	11
Warboys A	9	1	5	3	20½	7
Peterborough A	9	1	3	5	18½	5

Division Two	P	W	D	L	Games	Pts
St Neots B	8	3	4	1	19½	10
New England B	8	4	2	2	16½	10
Spalding	8	4	1	3	19	9
Warboys B	8	3	2	3	15	8
Peterborough B	8	1	1	6	10	3

Team 7000 (N)	P	W	D	L	Games	Pts
Spalding	6	3	2	1	14	8
NE Patriots	6	2	3	1	14	7
Peterborough B	6	1	4	1	11	5
Warboys WC	6	1	1	4	9	3

Problem Night

Pairing	Rd 1	Rd 2	Total
Ed & Ray	14	22	36
Phil & Mahmoud	11	20	31
Chris & Jim	11	12	23

Club Championship

Postponements			
C Russell (1)	Rd	3	R Jones (2)
R Jones (2+P)	Rd	4	R Ilett (3)
E Smith (1)	Rd	5	R Jones (2+2P)
J Jennings (2)	Rd	7	R Ilett (3½+P)
R Jones (2+3P)	Rd	7	P Cooper (0)
E Smith (1+P)	0	1	E Knox (3)

Player	Round									Pts
	1	2	3	4	5	6	7	8	9	
P Walker	1	1	1	1	1	1	½	1	1	8½
P Spencer	1	0	1	1	½	1	½	1	1	7
P Hanks	0	1	1	1	1	½	½	0	1	6
E Knox	0	1	0	0	1	1	1	1	1	6
R Ilett	1	1	1	P	½	0	P	1	1	5½+2
N Wedley	0	0	0	1	0	1	0	1	½	3½
C Russell	1	0	P	1	0	½	½	0	0	3+1
J Jennings	0	0	0	0	0	1	P	0	½	2½+1
R Jones	1	1	P	P	P	0	P	0	0	2+4
E Smith	1	1	0	0	P	0	0	0	0	1+1
P Cooper	0	0	0	0	0	0	P	0	0	0+1

New England Grand Prix

Player	Champ	Ladder	League	Cup	7000 Team	Total	TPR*
P Walker	8½	3	5½	2½	4	23½	2087
P Spencer	7		10	2½	3½	23	1811
P Hanks	6	2	4½	2		14½	1837
E Knox	6		3½	2½	1½	13½	1655
C Russell	3	1	4½	½	2½	11½	1527
R Ilett	5½	1	5½		½	11½	1887
J Jennings	2½	3½	1½	1	1	9½	1387
N Wedley	3½	2½	1½	½	½	8½	1410
R Jones	2		4		2	8	1676
E Smith	1	1	1			3	1076
J Sadler		1				1	1750
P Cooper	0	0				0	725

* Tournament Performance Rating is approximate

New England Club Ladder

White	Black	
P Hanks	½	½ P Walker
R Ilett	½	½ P Walker

Position	Change		Player	Final Record 2021-22
	Month	Overall		
1	+2	+2	J Jennings	1,0,0,½,1,1
2	-1	+7	P Walker	1,1
3	-1	+5	P Hanks	½,1
4	+1	+2	N Wedley	½,1,1,0,0
5	-1	-4	E Smith	1,0,0,0
6	-	-4	P Cooper	0,0,0,0
7	-	-3	J Sadler	1
8	-	-1	R Ilett	½
9	-	-4	C Russell	1

Match of the Month

Chess can be a cruel game. After the following game, I let the chess.com website perform an analysis and it returned an impressive 93.8% accuracy rating for my moves and 94% for my opponent. Sadly, it is an example of how the missing 6-7% dictates the result.

Jim Jennings v Norman Wedley
New England Club Ladder; 27.04.2022

1 e4 c5
2 Bc4

This response to the Sicilian Defence is known as the Bowdler Attack. There are several online discussions of the variation (e.g. <https://chessklub.com/bowdler-attack/>) but it is not favoured by grandmasters.

2 ... Nc6
3 d3 d6
4 Nf3 e6
5 Nc3 Be7
6 Be3 Nf6
7 d4 cxd4
8 Nxd4

This position has been reached in some top level games. One such was B Smith (2481) v V Shishkin (2474), Baia Sprie 2011 which featured a more conventional move order 1 e4 c5 2 Nf3 Nc6 3 d4 cd4 4 Nd4 Nf6 5 Nc3 d6 6 Bc4 e6 7 Be3 Be7. The difference? In that game, it was White to move whereas here, it is Black. Whoops!

8 ... 0-0
9 Nxc6 bxc6

Black is usually happy to see this exchange. In the Sicilian Defence, White often builds a kingside attack but Black tries to play the disruptive advance d6-d5 to bring the focus of the action back to the centre. Despite having a pawn and 3 pieces covering the d5 square, White cannot prevent the thrust due to the supporting pawns on e6 and now c6.

10 0-0 Qc7
11 Bf4 e5
12 Bg5 a5
13 a4 Ba6

14 Bxa6 Rxa6
15 b3 Rd8

Around this point, it is difficult to see how White can attack. I have no kingside knight to place on g5 to hit f7 or h7 in co-operation with my queen and I cannot expose the black king on the g file by Nc3-d5 and subsequent exchanges on f6. That leaves just one option...

16 Qd3 Raa8
17 Qg3 Rd7
18 Rad1 Ne8
19 Bh6 Bf6
20 Ne2 Kh8

The pressure against g7 is not too serious at the moment and as noted earlier, Black could play 20 ... d5 with the threat of a powerful, mobile pawn centre after 21 exd5. Instead, the reply 21 f4 looks aggressive because 21 ... dxe4 can be answered by 22 Rxd7 Qxd7 23 fxe5. However, Black interposes 21 ... Nd6 when 22 exd5 is met by 22 ... Nf5 and 22 fxe5 by 22 ... Nxe4.

Black continues to have this option for several moves but unfortunately, patient defence is also satisfactory for him.

21 Be3 Rad8
22 f4 exf4
23 Bxf4 Be5
24 Rd3 Nf6
25 Qh3

So far, the computer has not objected to the standard of play by either player. However, it suggests the improvement 25 Qe3 Bxf4 26 Rxf4 d5 27 Rxf6 gxf6 with equality. A few words of explanation from the software would be most welcome. Why should White voluntarily give up the exchange?

The problem is solved by passing the move to Black (i.e. inserting a null move). Because White is defending the pawn on e4 with major pieces, Black was threatening 27 ... dxe4 when recapturing costs the exchange. Trying to avoid this fate leads to the same outcome after 27 exd5 Nxd5 and there is a hidden pin with 27 Ng3 dxe4 28 Rxd7 (28 Nxe4 Rxd3 29 cxd3 Nd5) 28 ... Rxd7 29 Nxe4 Rd1+ 30 Rf1 Rxf1+ 31 Kxf1 Qe5. I still lose the pawn after 27 e5 Re7 28 Rf5 Ng4 and leave Black with an undamaged pawn structure.

25 ... Bxf4
26 Rxf4 Qa7+

Black could gain a solid pawn simply by 25 ... Nxe4.

The computer again prefers 26 ... d5 and although some of the previous tactics no longer work, its continuation is still 27 Rxf6 gxf6. Black can defend but it is much more dangerous e.g. 28 Qh4 dxe4 29 Qxf6+ Kg8 when 30 Rg3+ or even 30 Nd4 exd3 31 Nf5 create difficulties for Black.

27 Kf1 Qc5
28 Rc3

With 28 Qf3, the position starts to become critical. It would be almost foolhardy for Black to allow 29 Rxf6

e.g. 28 ... Qxc2 29 Rxf6 gxf6 30 Qxf6+ Kg8 31 Rg3+ Kf8 32 Rg7 when 33 Qg5 and 34 Rg8# look terrifying. A natural reaction might be 28 ... Qe5 29 Nd4 Rc8 30 Rf5 Qe7 (30 ... Qxe4 31 Rxf6; 30 ... Qxh2 31 Rxf6 gxf6 32 Qxf6+ Kg8 33 Nf5) 31 Nxc6 Rxc6 when the computer stops short of showing 32 e5 attacking both c6 and f6.

28 ... Qh5

The black queen is wandering into the firing line and should be losing a pawn to 29 Qxh5 Nxh5 30 Rf5 Nf6 31 Rxa5. 28 ... Qe5 keeps her safer and poses many questions. 29 Rxc6 g5 leaves my rook on f4 with difficult choices e.g. 30 Rf2 Qa1+, 30 Rf3 g4 or 30 Rf5 Qa1+ 31 Kf2 Nxe4+ when my king is in danger. I would need to find 29 Qf5 c5 30 Qxe5 dxe5 and due to 31 Rh4 Rd1+ 32 Kf2 g5 and the fork on e4, I again must play 31 Rxf6 gxf6 32 Rxc5.

29 Rh4



My move allows the queen another chance to occupy e5. Norman instead finds an alternative which comes with an aftershock.

29 ... Qg6
30 Rg3 1-0

Suddenly, the black queen is trapped and the fight is over.

Jim Jennings

Eye Opener

Grima v Carvalho
Correspondence Olympiad, 1989

1	e4	c5
2	Nf3	d6
3	d4	cxd4
4	Nxd4	Nf6
5	Nc3	e6
6	Be2	a6
7	Be3	Be7
8	0-0	

Almost everyone who has ever played the Najdorf Sicilian as either Black or White will have reached an analogous position. White has avoided aggressive variations with Bc1-g5 or Bf1-c4 but so far, the first seven moves have been totally thematic.

If you are disciple of Nakamura or Ivanchuk, you might have tried 8 g4 whereas Caruana chose 8 f4 Nc6 ... and then went for 9 g4. In his book *Blind Faith*, Chris Ross warns against these crude "hacks" and indeed, the aforementioned grandmasters did not fare particularly well.

8 ... b5

This still looks normal but in fact, it steps outside Fritz's opening book. Would you believe that from such an unpretentious position the game is only going to last two more moves?



9 Bf3

Suddenly, Black is faced with the threat 10 e5 hitting the black knight and revealing the predicament of the rook on a8.

9 ... Nfd7

The obvious rejoinder is 9 ... e5 but after 10 Nf5, White has a fearsome advantage in development as just a few lines will show :

- 10 ... Bxf5 11 exf5 d5 12 Nxd5
- 10 ... g6 11 Nd5
 - 11 ... gxf5 (11 ... Nxd5 12 Qxd5) 12 Nxf6+ Bxf6 13 exf5
 - 11 ... Nc6 12 Bb6 Qd7 13 Nfxe7
- 10 ... 0-0 11 Nd5 Nc6 12 Nfxe7+ Nxe7 13 Nxf6+ gxf6 with an exposed black king.

10 Nf5 1-0

Black cannot block the long diagonal after 10 ... exf5 11 exf5 or 10 ... 0-0 11 Nxe7+ Qxe7 12 e5 d5 13 Nxd5. Such an early resignation probably reflects that this miniature was played in correspondence chess.

Cambridgeshire County Chess Leagues

A Team	Fenland		Cambridgeshire League									Score	Appearances	Grading	
	Godmanchester 13 th Oct	Cambridge 1 st Dec	Peterborough A 29 th Sept	Warboys A 27 th Oct	St Neots 24 th Nov	St Neots 13 th Dec	Warboys A 26 th Jan	Peterborough A 17 th Feb	Peterborough A 9 th Mar	Warboys A 30 th Mar	St Neots 20 th Apr			Opponent Average	Performance
Peter Walker	1	½	½	1	½	1	1	0	½			6	9	1956	2090
Ray Ilett		0	0	½	1	1	0	½	1	1	½	5½	10	1878	1915
Paul Hanks	1	1	1	0	½	1	½	1	0	½		6½	10	1722	1860
Paul Spencer	1	0	0	1	1	1	1	½	1	½	½	7½	11	1672	1817
Ed Knox	1		1	0		0		1	½		1	4½	7	1535	1670
Ron Jones											0	0	1	1825	1450
Chris Russell					1		½				0	1½	3	1513	1533
Jim Jennings										½	0	½	2	1659	1395
Total	4	1½	2½	2½	4	4	3	3	3	2½	2	32		1744	1832
Sum of opponents' grades	5500	7214	8614	8672	8459	9228	8827	8293	8293	8827	9408	based on grades at start of the season – excludes defaulted games			
Sum New England grades	7124	7478	9080	9080	9056	9106	9082	9106	9106	8412	8203				

B Team	Cambridgeshire League								Score	Appearances	Grading		
	Peterborough B 23 rd Sept	Spalding 20 th Oct	Warboys B 17 th Nov	St Neots B 16 th May	Peterborough B 9 th Feb	Spalding 1 st Mar	Warboys B 23 rd Mar	St Neots B 4 th May			Opponent Average	Performance	
Peter Walker			1						1	1	1833	2208	
Ray Ilett		½							½	1	1800	1800	
Paul Spencer		½	0	½	0	1	0	½	1	3½	8	1733	1686
Ron Jones		1	½	0		½	1	½	½	4	7	1674	1728
Chris Russell		1	1d	1	0		½		½	3+1d	6	1562	1693
Norman Wedley			1		0	½	0	0		1½	5	1556	1406
Jim Jennings					0	1			0	1	3	1542	1399
Ed Smith								1		1	1	1098	1473
Total	3	2½	2½	0	3	1½	2	2	16½		1630	1637	
Sum of opponents' grades	5948	5213	6554	6851	6142	6952	6119	6751	based on grades at start of the season – excludes defaulted games				
Sum of New England grades	6848	4790	6885	6061	6121	6368	5888	6241					

Cambridgeshire Team 7000 Competition

NE Patriots	Plate			Team 7000							Score	Appearances	Grading		
	Godmanchester 8 th Nov	Warboys DM 2 nd Feb	St Neots 11 th May	Warboys WC 6 th Oct	Peterborough 4 th Nov	Spalding 1 th Jan	Warboys WC 23 rd Feb	Peterborough 16 th Mar	Spalding 6 th Apr					Opponent Average	Performance
Peter Walker		1	½	1	1	1		½				5	6	1889	2139
Ray Ilett							0		½			½	2	1844	1657
Paul Spencer	1	½	1	1			½	0	1			5	7	1757	1918
Ed Knox	½	1	0	½	0	1	0					3	7	1621	1567
Ron Jones					½			1	½			2	3	1568	1693
Chris Russell		½	0	1	½	½		½	0			3	7	1394	1378
Norman Wedley	½					½						1	2	1428	1428
Jim Jennings	1						1					2	2	1147	1522
Total	3	3	1½	3½	2	3	1½	2	2			21½		1630	1715
Sum of opponents' grades	5500	6794	6709	6319	6878	6738	6319	6485	6533	based on grades at start of the season without 1450 as fixed minimum					
Sum of Patriots grades	6085	6875	6875	6849	6793	6639	6565	6911	6848						