

# New Englander

## Chess Club Update – October 2023

### Chairman's Chatter

September is always hectic as the mass of results indicates and the season is just starting!

*Paul Hanks*

### Website to Watch

October is a bumper month for grandmaster chess. Start from 1<sup>st</sup> to 7<sup>th</sup> with the [European Club Cup](#) in Albania. Offerspill Sjakklubb have Magnus Carlsen on top board. The best Americans will be missing as the US Championship overlaps from 5<sup>th</sup> to 18<sup>th</sup> (see stlchessclub on [twitch.tv](#) or [youtube.com](#)). From St Louis to the Gulf, the [Qatar Masters](#) runs from 11<sup>th</sup> to 20<sup>th</sup> and there must be a direct flight to the Isle of Man for the [Fide Grand Swiss](#) from 25<sup>th</sup>. Phew!

### Diary Dates

25-26<sup>th</sup> November At Christie Hall Wansford, CCCA Individual Championship. Click [here](#) for the entry form

19-24<sup>th</sup> February [Cambridge International Open Chess Tournament](#) for players rated 1600+.

### Puzzle Problem

White to play and mate in 2.



Last Month's solution (Laaksonen 1945)

Position : k6r/1p6/1K1R4/7b/8/8/1Q6

**1 Qh1 Rh7 2 Rd8#** [1 ... Bf3 2 Qxh8#; 1 ... Rb8 2 Qa1#; 1 ... other 2 Qxb7#]

### Result Round-up

Club Rapidplay : 6<sup>th</sup> September 2023

Player	Round				Total
	1	2	3	4	
P Walker	½	1	1	1	3½
R Taylor	1	1	1	0	3
N Chedd	1	1	0	1	3
R Ilett	1	0	1	1	3
B Stephens	1	½	0	1	2½
J Sutherland	½	½	½	1	2½
I Goodwin	0	1	½	1	2½
E Knox	1	0	1	0	2
A Neville	0	1	1	0	2
C Russell	1	0	0	0	1
D Dhokia	0	1	0	0	1
S Reid	0	0	1	0	1
J Jennings	0	0	0	1	1
C Vidot	0	0	0	0	0

### Cambridgeshire League

St Neots A	2	New England A	3
R Gompelman	0	P Walker	1
C Emery	1	R Ilett	0
J Greiller	0	B Stephens	1
M Cooper	1	P Spencer	0
T Holmes	0	N Chedd	1

Godmanchester	1½	New England B	2½
D Hurricks	½	P Spencer	½
J Barwise	½	N Chedd	½
J Wright	0	C Russell	1
A Rankine	½	I Goodwin	½

New England B	1	Ely	3
P Spencer	0	B Tarlow	1
N Chedd	1	D Short	0
C Russell	0	D Finch	1
J Jennings	0	D Kowalczyk	1

### Team 4000 competition

Rookwood	1½	NE Cavaliers	1½
L Levett	½	N Wedley	½
T O'Keefe	1	I Goodwin	0
Default	0	D Dhokia	1

### Club Championship

White	Round 1		Black
P Walker	<b>P</b>	<b>8 Nov</b>	S Reid
B Stephens	1	0	D Dhokia
P Spencer	½	½	I Goodwin
N Chedd	1	0	C Russell
E Knox	1	0	A Neville
N Wedley	1	0	R Ilett
P Turp	<b>P</b>	<b>P</b>	J Jennings
White	Round 2		Black
D Dhokia	0	1	P Walker
I Goodwin	1	0	S Reid
C Russell	0	1	B Stephens
N Chedd	1	0	P Spencer
J Jennings	<b>P</b>	<b>P</b>	R Ilett
A Neville	1	0	N Wedley
P Hanks	1	0	E Knox
P Walker	0	1	B Stephens

Player	P W	B S	P S	N C	S R	D D	I G	C R	Pts
P Walker	X	0			<b>P</b>	1			1+ <b>P</b>
B Stephens	1	X				1		1	3
P Spencer			X	0			½		½
N Chedd			1	X				1	2
S Reid	<b>P</b>				X		0		0+ <b>P</b>
D Dhokia	0	0				X			0
I Goodwin			½		1		X		1½
C Russell			0	0				X	0

Player	R I	J J	A N	N W	P T	E K	P H	Pts
R Ilett	X	<b>P</b>		0				0+ <b>P</b>
J Jennings	<b>P</b>	X			<b>P</b>			<b>2P</b>
A Neville			X	1		0		1
N Wedley	1		0	X				1
P Turp		<b>P</b>			X			<b>P</b>
E Knox			1			X	0	1
P Hanks						1	X	1

### New England Grand Prix

Player	Champ	Ladder	League		Cup	Team 7000	Team 4000	Total	TPR*
			A	B					
N Chedd	2		1	1½				4½	1917
B Stephens	3		1					4	1972
I Goodwin	1½			½			0	2	1465
P Walker	1		1					2	1914
N Wedley	1						½	1½	1655
A Neville	1							1	1584
P Spencer	½		0	½				1	1442
P Hanks	1							1	2094
E Knox	1							1	1696
C Russell	0			1				1	1452
S Reid	0							0	1025
J Jennings				0				0	1038
R Ilett	0		0					0	1212
D Dhokia	0							0	1272
P Turp									-

\* Tournament Performance Rating is approximate

### Match of the Month

It is great to welcome a new young player to the club. The flip side, however, is that the established players have to put their reputations on the line and I drew the short straw in the first round of the club championship. It turned out to be a real rollercoaster ride.

Clamber aboard, strap yourself in and ...

#### P Spencer v I Goodwin

New England Club Championship Rd 1; 13.09.2023

**1 d4 d5**

... relax as the carriages glide smoothly out of the boarding station.

**2 c4 Nc6**

A jolt! This unpopular move comes as a small bump in the rails. In the Queen's Gambit, Black often contests the central pawn structure with the freeing move c7-c5 but that option has been deliberately blocked in this Chigorin Variation. At first glance, it looks like a dubious concession but former Russian champion Morozevich has adopted the line with some success.

**3 Nc3 dxc4**  
**4 Nf3**

If you can reach top speed straight away, an important departure is 4 d5 Ne5 5 f4 which forces some immediate strategic decisions. In a mirror of Alekhine's Defence, White builds a strong pawn centre and Black attacks it. This sharp continuation seems to be critical as White is scoring well at master level.

4 ... Nf6  
5 e3

Now 5 d5 screams out and asks a very probing question. 5 ... Nb8 looks very passive and 5 ... Na5 6 Qa4+ c6 7 b4 needs deeper analysis after 7 ... b5 8 Qxa5 Qxa5 9 bxa5 b4 and 10 ... cxd5. Are you happy the mobile pawns are adequate compensation for the piece? This sort of quandary seems to bedevil this opening.

5 ... Be6

With no regard for the bishop on f8, this move has a modern feel. Other similar innovations occur for instance in the recent Snake variation of the Benoni Defence (1 d4 Nf6 2 c4 c5 3 d5 e6 4 Nc3 exd5 5 cxd5 Bd6) and 1 d4 d5 2 c4 dxc4 3 Nc3 Be6 is a respectable, if controversial, opening try.

6 Ng5 Bd5  
7 e4 e6

Black is again giving up a piece for assorted pawns. The computer prefers doing this by 7 ... Nxe4 8 Ngxe4 Bxe4 9 Nxe4 Qxd4 when the c pawn can be retained after 10 Qxd4 Nxd4 due to the tempo dealing with the threat 11 ... Nc2+. Instead, 10 Qc2 b5 11 Be3 will give White rapid development – if you can confidently negotiate the twists and turns after 11 ... Nb4!

8 exd5 exd5  
9 Be2 g6  
10 0-0 Bg7  
11 Bf4 a6  
12 Re1 0-0  
13 Nf3 b5

The g-forces are imposing a slight cramp on the restricted bishop on e2 but as White has almost completely deployed his forces, there is nothing to fear. Fritz is happy to assess White's position as over 2 pawns better.

14 a3

Either endgames after piece exchanges or opening the position for an attack should favour White. So 14 Ne5 might look awkward for Black because 14 ... Nxe5 15 dxe5 Nd7 16 Qxd5 but 16 ... Nxe5 recovers the pawn whereas 14 ... Ne7 15 Bf3 gives the bishop pair a good view across the theme park.

14 ... Re8  
15 Ne5 Ne7  
16 Qd2 Nf5  
17 Ng4

This is a bit of a water splash giving Black a surge of activity against the d4 weakness. I could keep him pressed back in his seat with 17 g4 Nd6 18 Bf3 Nde4 but exchanging then leads to a cold shower after 19 Nxe4 Nxe4 20 Bxe4 dxe4 21 Rxe4 f6 22 Nc6 Qd7 23 Rxe8+ Rxe8 24 d5 Qxg4+ with attacking prospects. Instead, 19 Qc2 should keep the upper hand.

17 ... Ne4  
18 Nxe4 Rxe4  
19 Be3 Nxe3

After 19 ... Nxd4, we emerge onto a level piece of track. Black wants all the fun of the fair!

20 fxe3 Qg5  
21 Nf2 Rxd4

21 ... Qxe3 22 Qxe3 Rxe3 23 Rad1 Rae8 also keeps up Black's pressure. I overlooked Black's move and burned a lot of time trying to figure out how I was going to defend such a bad position.

22 Qc1 Rh4  
23 Kh1 Be5

White must be feeling queasy because of the range of options. 23 ... Re8 brings up reinforcements, hits e3 and the obvious defence 24 Nd1 leads to checkmate e.g. 24 ... Be5 25 h3 Rxh3 26 gxh3 Qg3. 23 ... Qe5 threatens mate and another pawn on b2.

24 Nh3 Qh6  
25 Qd2 d4  
26 Bf3 Rd8  
27 Qf2 dxe3  
28 Qxe3

28 Rxe3 maintains protection of b2. From the high point ten moves ago, I have rushed headlong down a dip of -3 pawns.

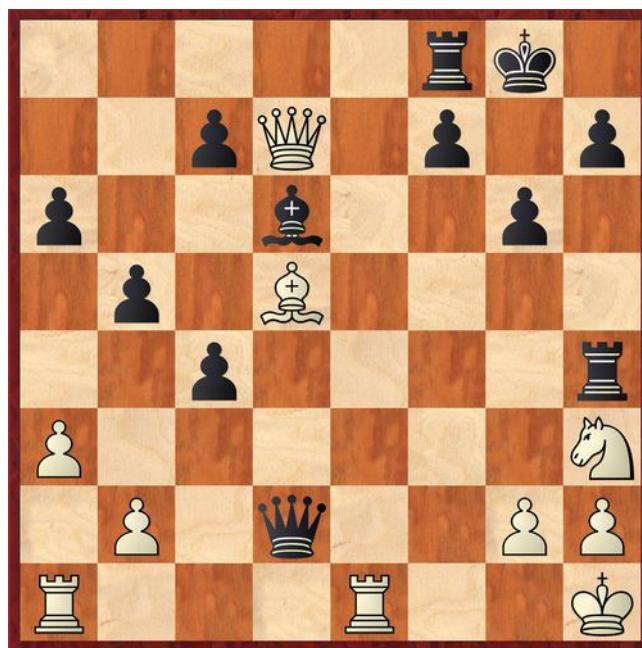
28 ... Bf4

The emergency brake! Black's kingside progress judders to a halt. He should be satisfied with the material gain 28 ... Qxe3 29 Rxe3 Bxb2. My initiative puts me on an upward ramp...

29 Qe7 Rf8  
30 Bd5 Bd8  
31 Qd7

... and down again. Black has 31 ... Rd4 when, for instance, 32 Bf3 Rd2 33 Qc6 (otherwise 33 ... Bg3) Rxb2 and White is defending once more.

31 ... Qd2



... and up (due to 32 Bxf7+ Rxf7 33 Qd8+ Rf8 34 Qxh4 and if 32 ... Kh8 33 Re8 Rxe8 34 Qxe8+ Kg7 35 Qg8+ Kh6 36 Bxg6!).

**32 Rad1 Qxb2**

... and along the flat because the black queen covers h8 invalidating the previous comment.

**33 Rf1 Qg7**

... and up. I have my chance to force 34 Rxf7+ Rxf7 35 Qd8+.

**34 Rf3 c3**

Higher still. Black could defend with 34 ... Kh8 evading the pin on f7 so that 35 Rxf7 Rxf7 36 Qb8+ Qf8 threatens f1 e.g. 37 Qxh4 Rf1+ 38 Rxf1 Qxf1+ 39 Ng1 but 39 ... Bc5 loses to 40 Qd8+ Kg7 41 Qxc7+. After avoiding back rank checks with 39 ... Kg7 40 Qd4+, a perpetual check is likely but Black could try for more with 40 Qf6.

**35 Rdf1**

35 Rxf7+ is making me seasick.

**35 ... Rh5**

I have lost track of which way is up or down. Just look at 35 ... Qe5.

**36 Rxf7 Kh8**

Up and away. Alternatives lead to checkmate and even this "only move" - a great saving resource which I had not foreseen - gives me an 8-point advantage. Downhill all the way from here!

**37 Rxf8+**

A really scary switchback. My advantage is now barely a pawn. Where did that go? I managed to prevent going off the rails with 37 Rxg7 Rxf1+ 38 Ng1 Rxh2# and the dizzy white king needs fresh air with 37 g4. Black has cleverly left me another headspinning option 37 Qxd6 Rxf7 (37 ... cxd6 38 Rxf8+ Qxf8 39 Rxf8+) 38 Qd8+ Qf8 39 Qxf8 etc.

**37 ... Bxf8**

**38 Qd8 Rf5**

**39 Rxf5 gxf5**

**40 Ng5**

Upside down, over the top and vertically downwards! I could stay in the game with 40 Bb3 to hold up the advance but it is difficult to play after 40 ... c5 41 Qc8.

**40 ... c2**

Black's position is mind-blowing according to Fritz with checkmate on the horizon - if you can see the horizon, that is. But surely, even after jumping off a cliff, my 3 attacking pieces will provide a parachute.

**41 Nf7+ Kg8**

Time has whizzed past and we are both rushing. One continuation draws, the other wins. 41 ... Qxf7 forces promotion 42 Qg5 (42 Bxf7 c1=Q+ mating) 42 ... Qxd5 and 43 Qd1+.

**42 Nh6+ Kh8**

**43 Nf7+ Kg8**

**44 Nh6+ Kh8**

**45 Nf7+ ½-½**

We arrive back at the station - safe but very dishevelled.

*Paul Spencer*

## Eye Opener

**P M Giulian v M J Yeo**

British Championship, Brighton; 09.08.1984

<b>1</b>	<b>d4</b>	<b>d5</b>
<b>2</b>	<b>c4</b>	<b>Nc6</b>
<b>3</b>	<b>Nc3</b>	<b>dxc4</b>
<b>4</b>	<b>d5</b>	<b>Na5</b>
<b>5</b>	<b>e4</b>	

5 Qa4+ would effectively transpose into one of the game notes.

<b>5</b>	<b>...</b>	<b>e6</b>
<b>6</b>	<b>Bf4</b>	<b>a6</b>
<b>7</b>	<b>Qa4+</b>	<b>c6</b>

Black has the option 7 ... Bd7 because 8 Qxa5 b6 appears to trap the white queen but it can escape with 9 Bxc7 Qxc7 10 d6 Bxd6 11 Qg5 Nf6 12 Qxg7 Ke7. Fritz then prefers Black and instead recommends 8 Qc2.

<b>8</b>	<b>dxc6</b>	<b>b5</b>
----------	-------------	-----------

8 ... Nxc6 9 Bxc4 Bd7 would revert to equality.

<b>9</b>	<b>Nxb5</b>	
----------	-------------	--

White would hold a pleasant advantage after 9 c7 bxa4 10 cxd8Q+ Kxd8 11 0-0-0+ Ke8 12 Nxa4 but in a later game, the same player as Black went for 9 ... Qf6 10 Nxb5 (10 Qxa5 Qxf4) 10 ... Bd7 11 Qxa5 Qxb2 when 12 ... Bb4+ and 12 ... Qxa1+ are threatened.

<b>9</b>	<b>...</b>	<b>axb5</b>
<b>10</b>	<b>Qxb5</b>	<b>Ba6</b>

Black cannot avoid the discovered check since 10 ... Ke7 11 Rd1 is crushing.

<b>11</b>	<b>Qa4</b>	
-----------	------------	--

11 c7+ Bxb5 12 cxd8Q+ Rxd8.

<b>11</b>	<b>...</b>	<b>Qb6</b>
<b>12</b>	<b>0-0-0</b>	

White has a wide range of options but the combination of the exposed position of his king and Black's lead in development is telling whilst the pawn on c6/7 will surely disappear.

<b>12</b>	<b>...</b>	<b>Bb5</b>
<b>13</b>	<b>Qc2</b>	

White has the creative 13 Bc7 but it can be ignored with 13 ... Qxc6. Black finishes in style.

<b>13</b>	<b>...</b>	<b>Nb3+</b>
<b>14</b>	<b>Kb1</b>	

If 14 axb3, 14 ... Ra1+ 15 Kd2 Bb4+ 16 Ke2 cxb3+

<b>14</b>	<b>...</b>	<b>Rxa2 0-1</b>
-----------	------------	-----------------

The rook is taboo because 15 Kxa2 Qa5+ 16 Kb1 Qa1#. If 15 Qc3, Black can calmly play 15 ... Bxc6 forcing 16 f3 before moving in for the kill with 16 ... Ra1+.